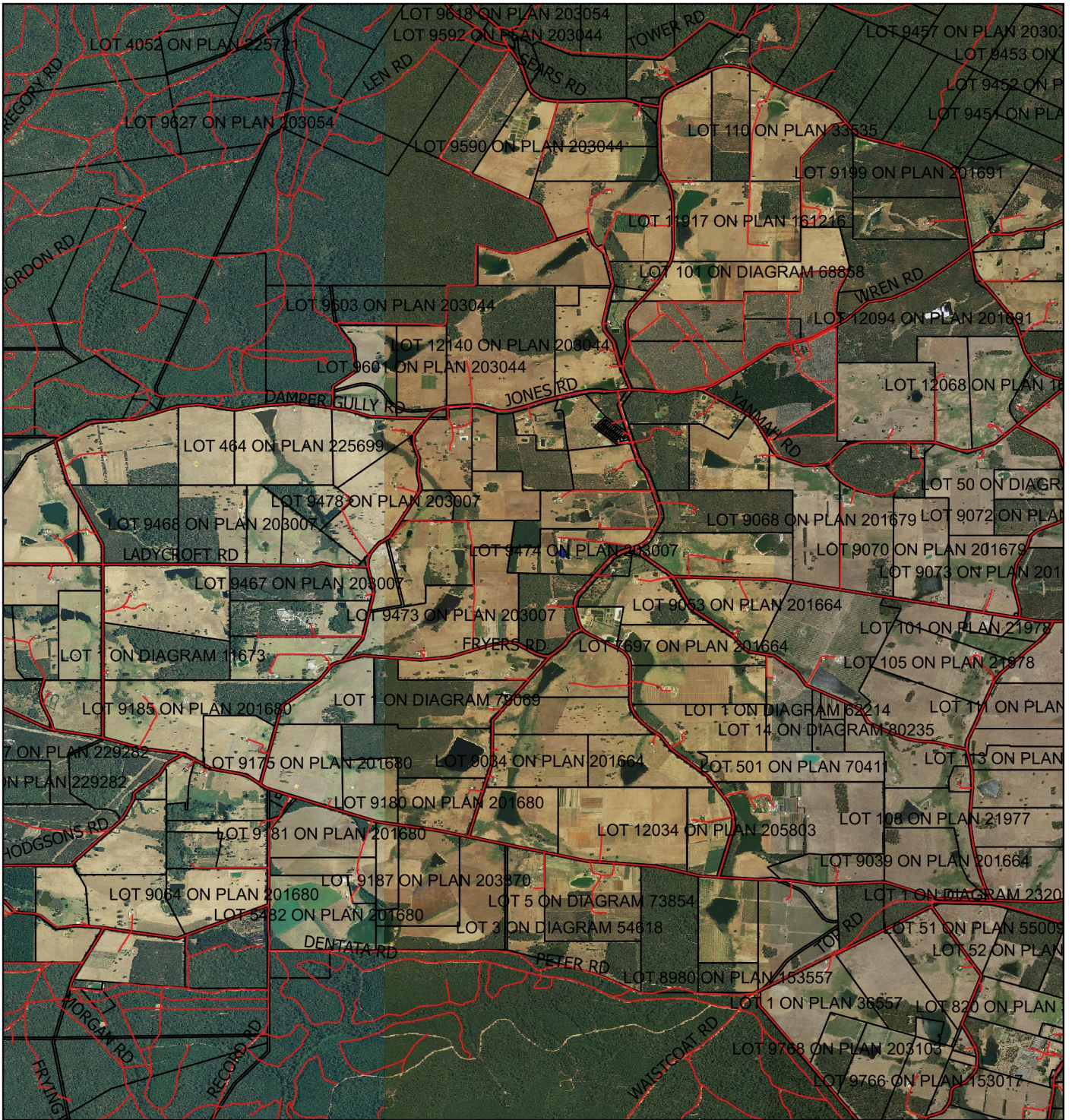






CPS 6540/1 - Context Map



Legend

-  Clearing Instruments Proposal
-  Roads
-  Cadastre
-  Virtual Mosaic



1:35,983

MGA 94
Geocentric Datum of Australia 1994

.....Date.....
Simon Weighell

Officer with delegated authority under Section 20
of the Environmental Protection Act 1986



GOVERNMENT OF
WESTERN AUSTRALIA