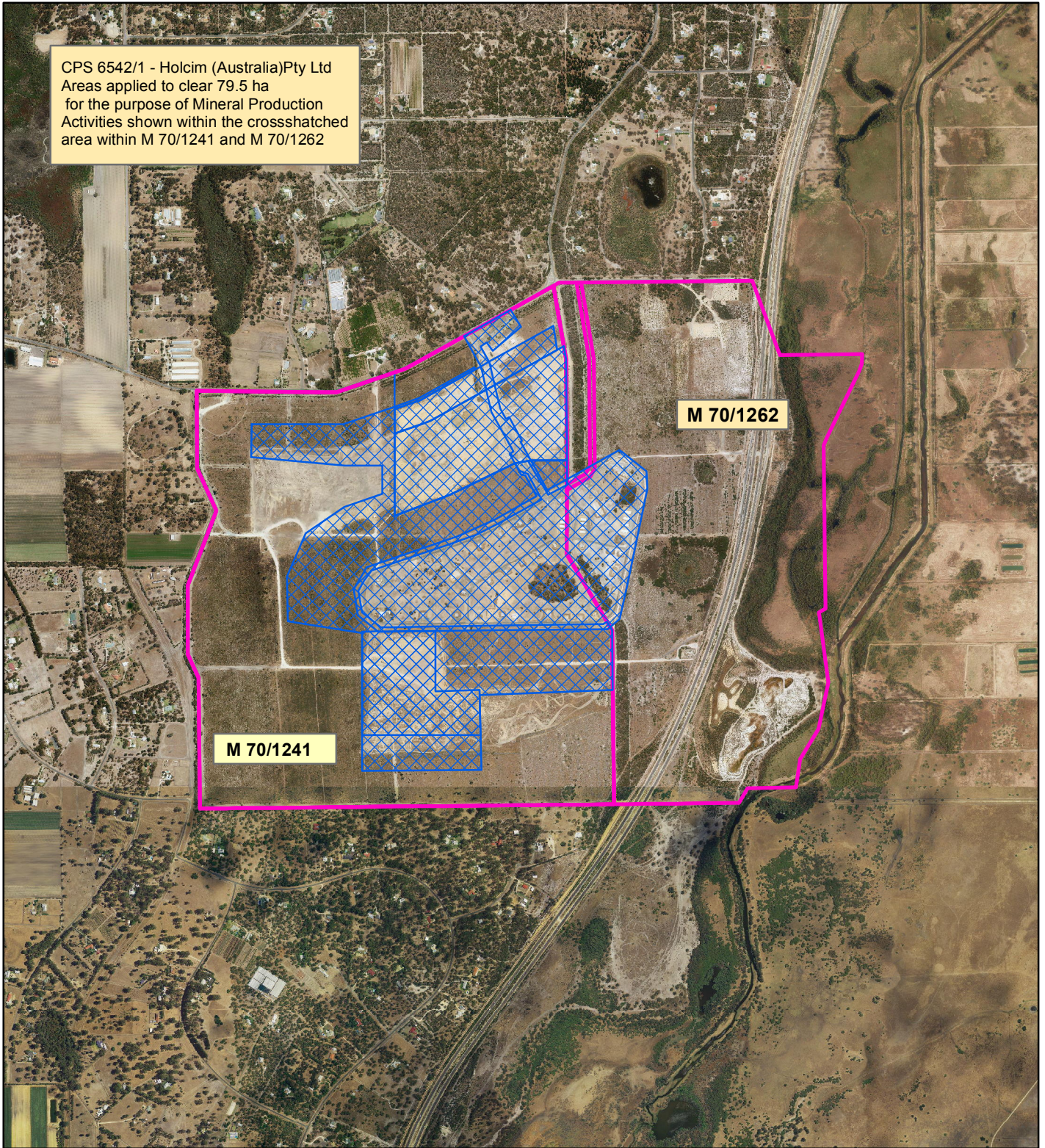






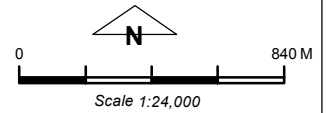
CPS 6542/1 - Holcim (Australia) Pty Ltd

CPS 6542/1 - Holcim (Australia) Pty Ltd
Areas applied to clear 79.5 ha
for the purpose of Mineral Production
Activities shown within the crosshatched
area within M 70/1241 and M 70/1262



LEGEND

-  Mining Tenements
-  Clearing Instruments
-  Areas Applied to Clear
-  Imagery



Geocentric Datum Australia 1994

Note: the data in this map have not been projected. This may result in geometric distortion or measurement inaccuracies.

..... Date

Officer with delegated authority under Section 20 of the Environmental Protection Act 1986

Information derived from this map should be confirmed with the data custodian acknowledged by the agency acronym in the legend.

