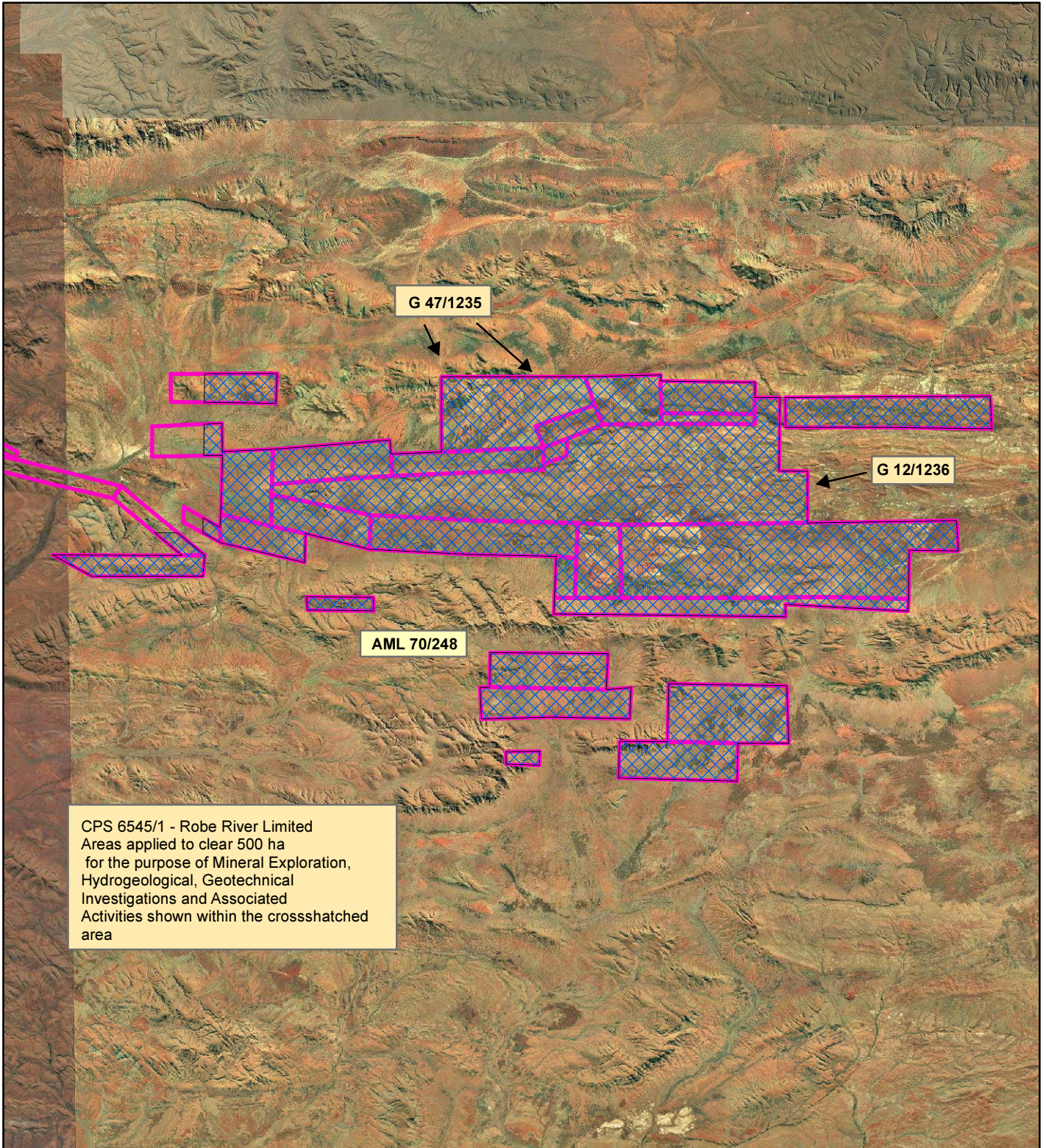


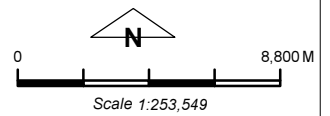
CPS 6545/1 - Robe River Limited



CPS 6545/1 - Robe River Limited
Areas applied to clear 500 ha
for the purpose of Mineral Exploration,
Hydrogeological, Geotechnical
Investigations and Associated
Activities shown within the crosshatched
area

LEGEND

- Mining Tenements
- ▣ Clearing Instruments
- ▣ Areas Applied to Clear
- Imagery



Geocentric Datum Australia 1994

Note: the data in this map have not been projected. This may result in geometric distortion or measurement inaccuracies.

..... Date

Officer with delegated authority under Section 20 of the Environmental Protection Act 1986

Information derived from this map should be confirmed with the data custodian acknowledged by the agency acronym in the legend.

