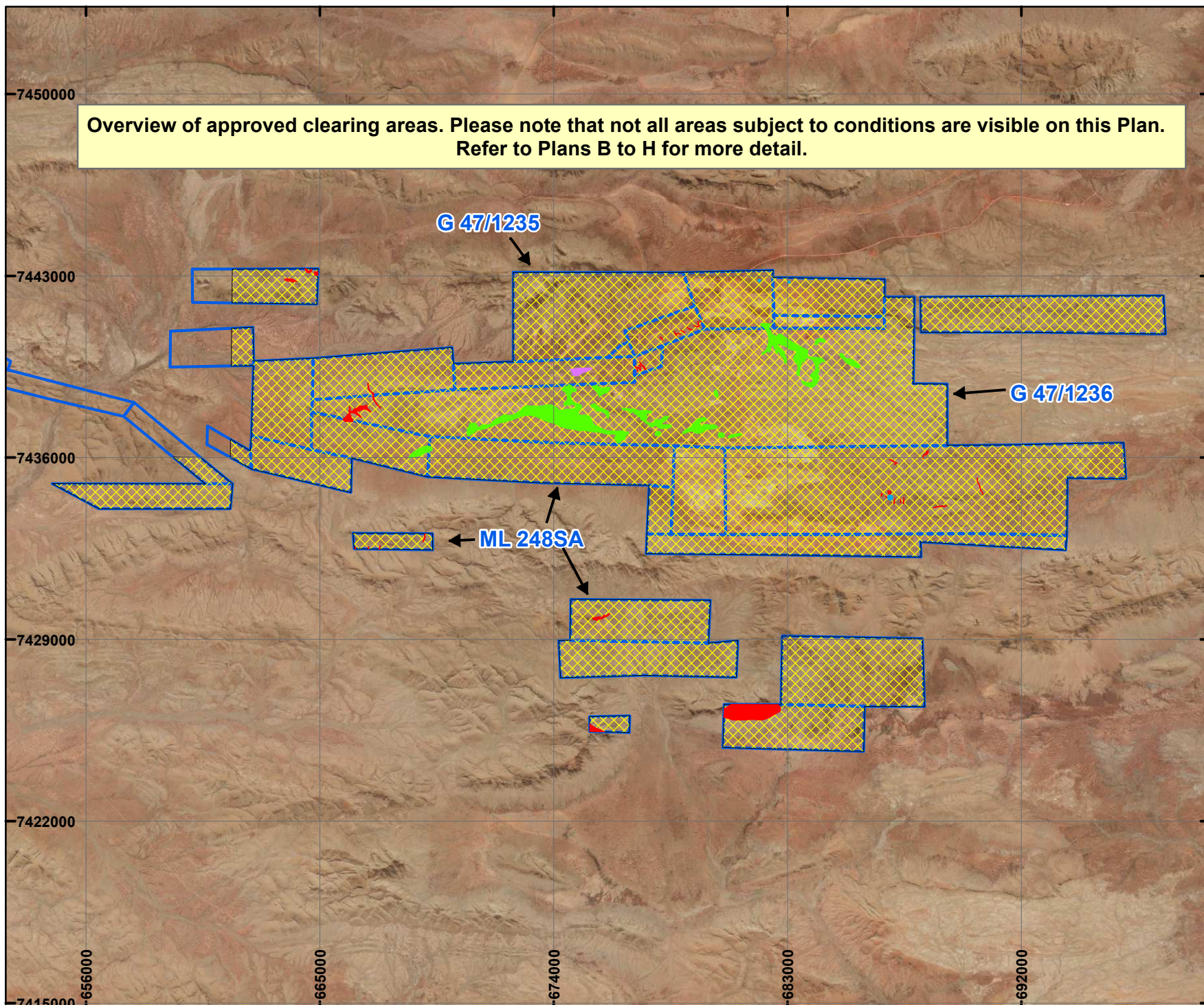


PLAN 6545/3A

Overview of approved clearing areas. Please note that not all areas subject to conditions are visible on this Plan. Refer to Plans B to H for more detail.



LEGEND

Mining Tenements

Clearing Instruments

Areas Approved to Clear

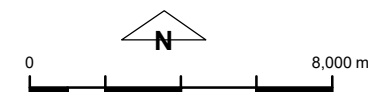
Areas Subject to Condition 5(a)

Areas Subject to Condition 5(b)

Areas Subject to Condition 6

Areas Subject to Condition 7

Orthophotography sourced from Landgate



Scale 1:200,000
(Approximate when reproduced at A4)

Geocentric Datum Australia 1994

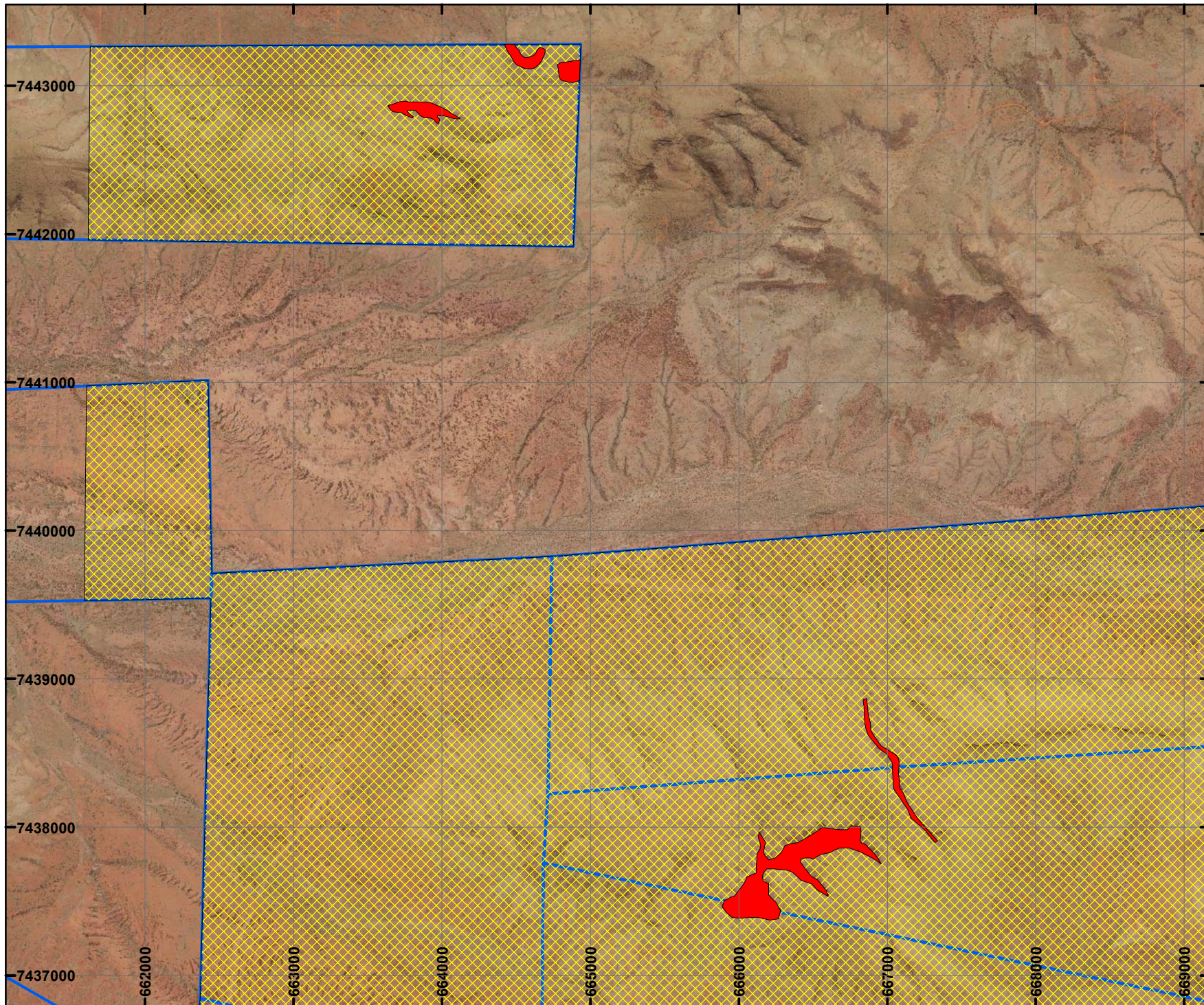
Note: the data in this map have not been projected. This may result in geometric distortion or measurement inaccuracies.

DANIEL ENDACOTT Date 20/12/2018
Officer with delegated authority under Section 20 of the Environmental Protection Act 1986

Information derived from this map should be confirmed with the data custodian acknowledged by the agency acronym in the legend.

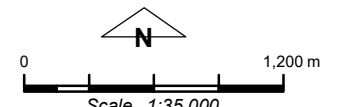


PLAN 6545/3B



LEGEND

-  Mining Tenements
- Clearing Instruments**
 -  Areas Approved to Clear
 -  Areas Subject to Condition 5(a)
- Orthophotography sourced from Landgate



Scale 1:35,000
(Approximate when reproduced at A4)

Geocentric Datum Australia 1994

Note: the data in this map have not been projected. This may result in geometric distortion or measurement inaccuracies.



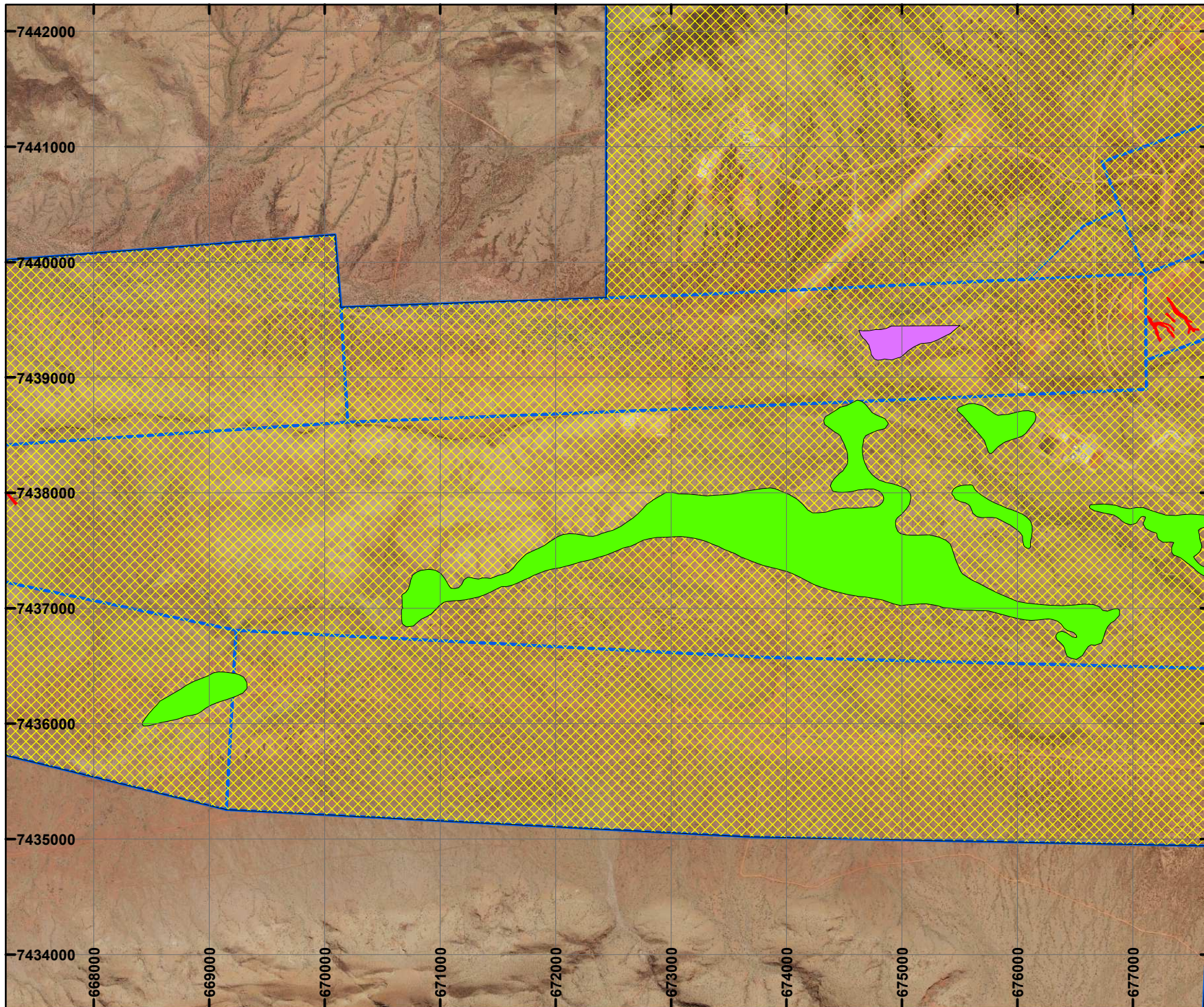
DANIEL ENDACOTT Date 20/12/2018
Officer with delegated authority under Section 20 of
the Environmental Protection Act 1986

Information derived from this map should be confirmed with the data custodian acknowledged by the agency acronym in the legend.



WA Crown Copyright 2002





PLAN 6545/3C



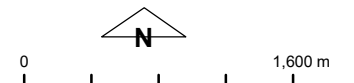
LEGEND

 Mining Tenements

Clearing Instruments

-  Areas Approved to Clear
-  Areas Subject to Condition 5(a)
-  Areas Subject to Condition 5(b)
-  Areas Subject to Condition 6

Orthophotography sourced from Landgate



Scale 1:45,000
(Approximate when reproduced at A4)

Geocentric Datum Australia 1994

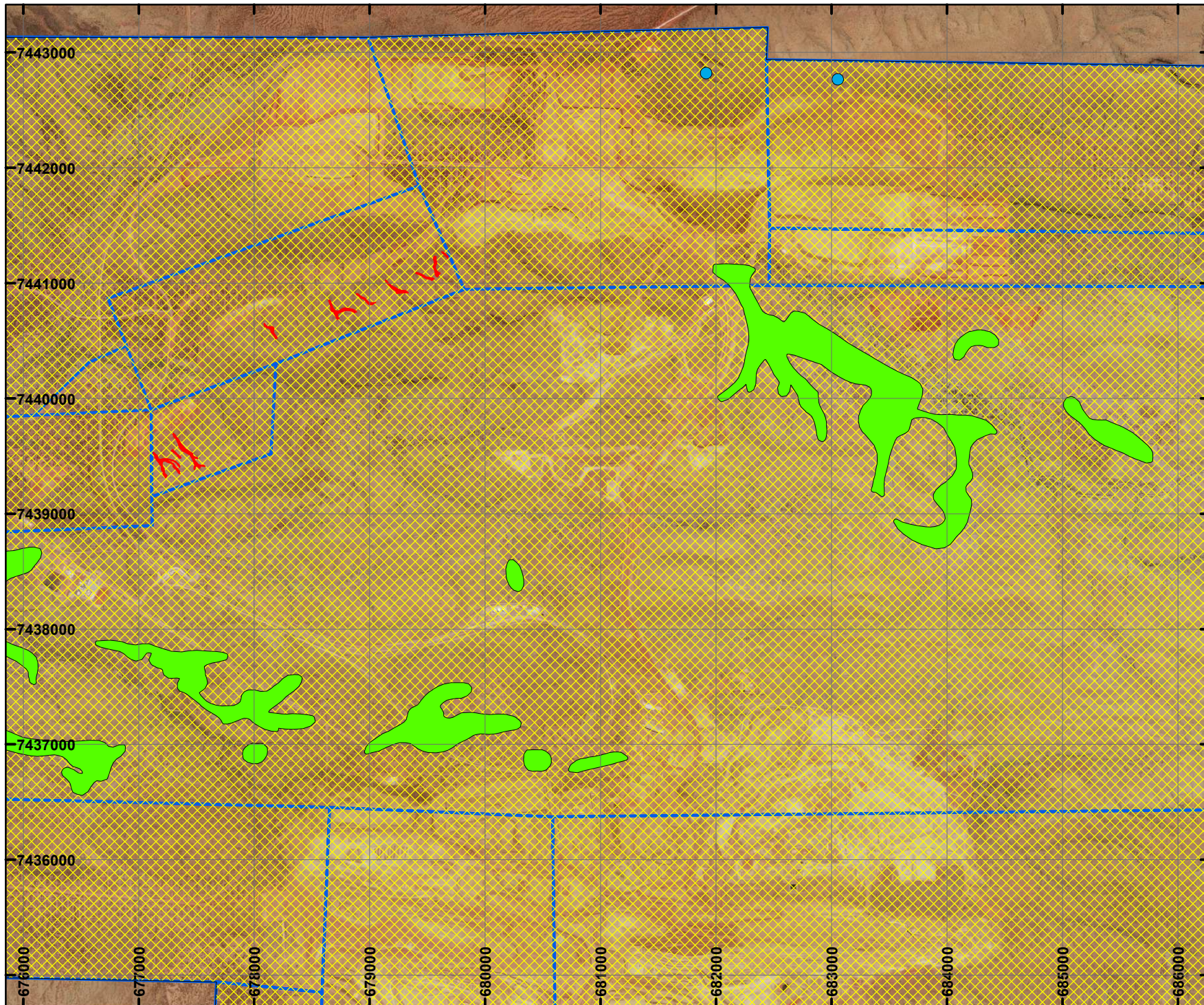
Note: the data in this map have not been projected. This may result in geometric distortion or measurement inaccuracies.


DANIEL ENDACOTT Date 20/12/2018
Officer with delegated authority under Section 20 of the Environmental Protection Act 1986

Information derived from this map should be confirmed with the data custodian acknowledged by the agency acronym in the legend.







PLAN 6545/3D



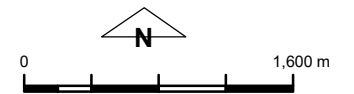
LEGEND

 Mining Tenements

Clearing Instruments

-  Areas Approved to Clear
-  Areas Subject to Condition 5(a)
-  Areas Subject to Condition 6
-  Areas Subject to Condition 7

Orthophotography sourced from Landgate



Scale 1:45,000
(Approximate when reproduced at A4)

Geocentric Datum Australia 1994

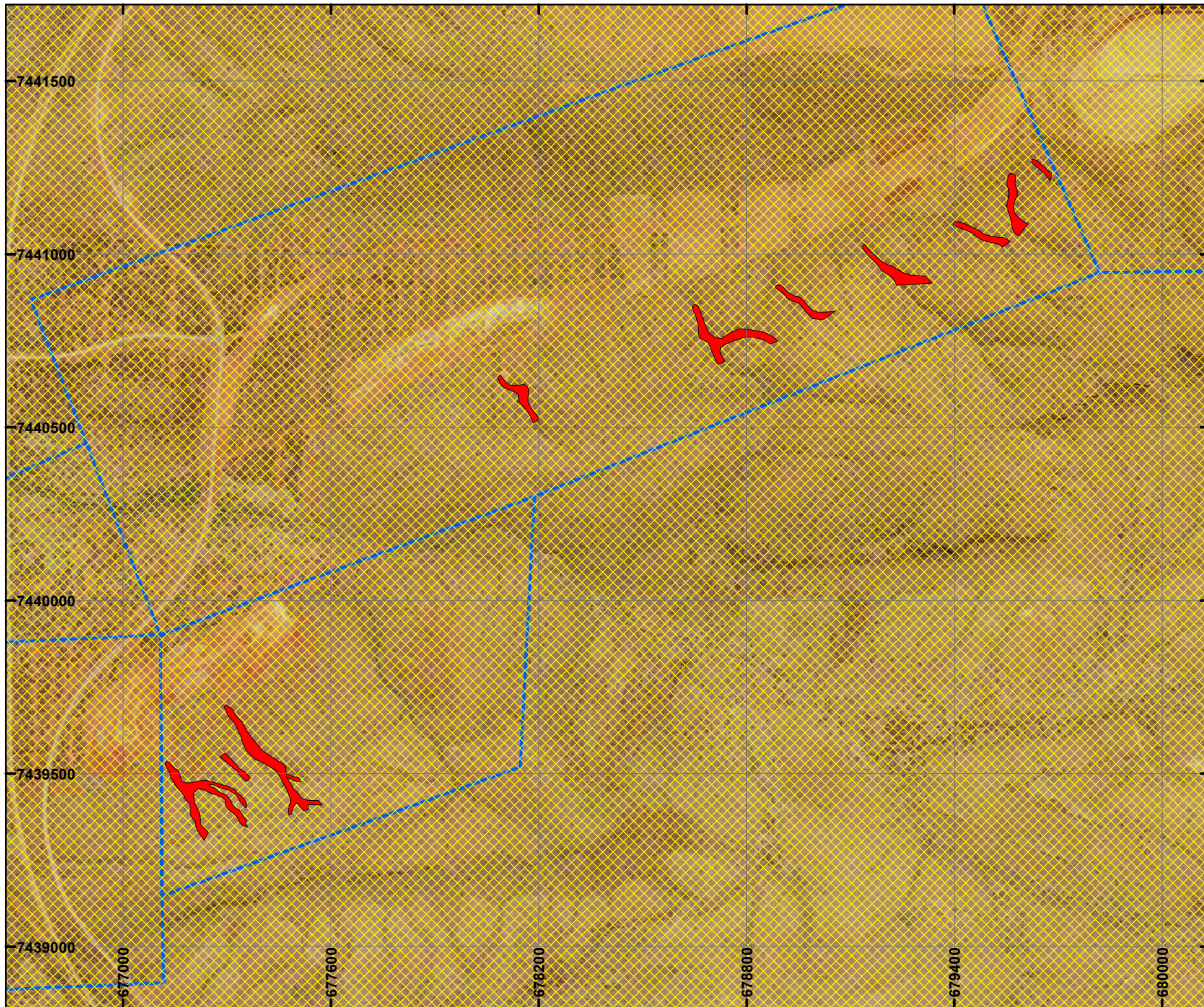
Note: the data in this map have not been projected. This may result in geometric distortion or measurement inaccuracies.


DANIEL ENDACOTT Date 20/12/2018
Officer with delegated authority under Section 20 of the Environmental Protection Act 1986




Information derived from this map should be confirmed with the data custodian acknowledged by the agency acronym in the legend.

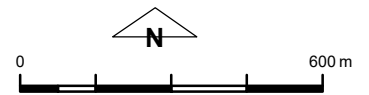


PLAN 6545/3E



LEGEND

-  Mining Tenements
- Clearing Instruments**
 -  Areas Approved to Clear
 -  Areas Subject to Condition 5(a)
- Orthophotography sourced from Landgate



Scale 1:15,000
(Approximate when reproduced at A4)

Geocentric Datum Australia 1994

Note: the data in this map have not been projected. This may result in geometric distortion or measurement inaccuracies.

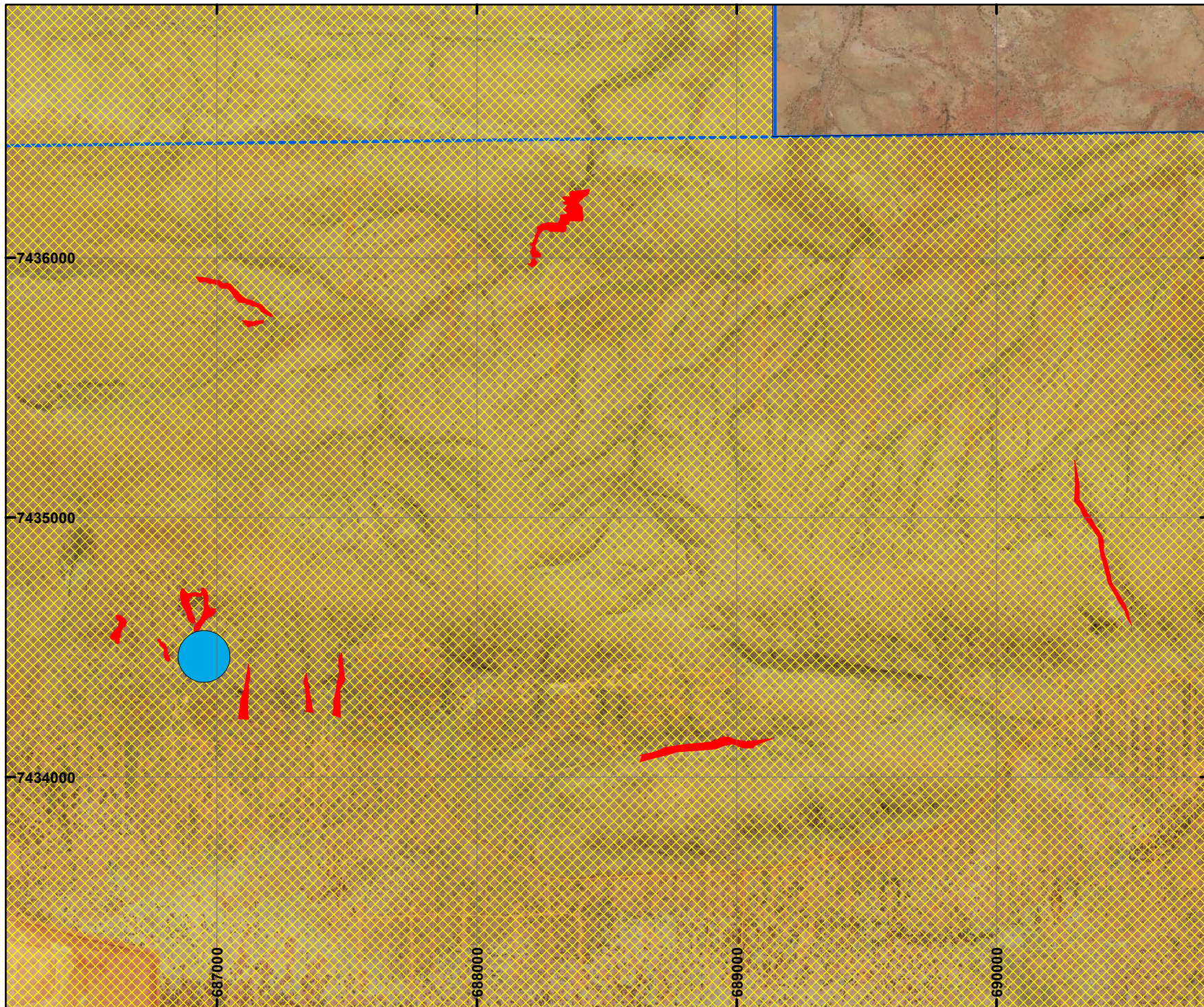
DANIEL ENDACOTT Date 20/12/2018
Officer with delegated authority under Section 20 of the Environmental Protection Act 1986

Information derived from this map should be confirmed with the data custodian acknowledged by the agency acronym in the legend.



WA Crown Copyright 2002

PLAN 6545/3F





LEGEND

 Mining Tenements

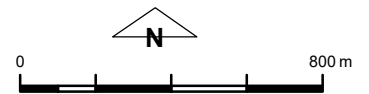
Clearing Instruments

 Areas Approved to Clear

 Areas Subject to Condition 5(a)

 Areas Subject to Condition 7

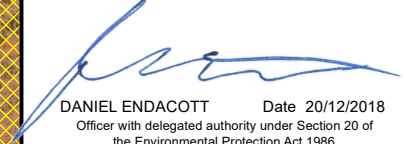
Orthophotography sourced from Landgate



Scale 1:20,000
(Approximate when reproduced at A4)

Geocentric Datum Australia 1994

Note: the data in this map have not been projected. This may result in geometric distortion or measurement inaccuracies.



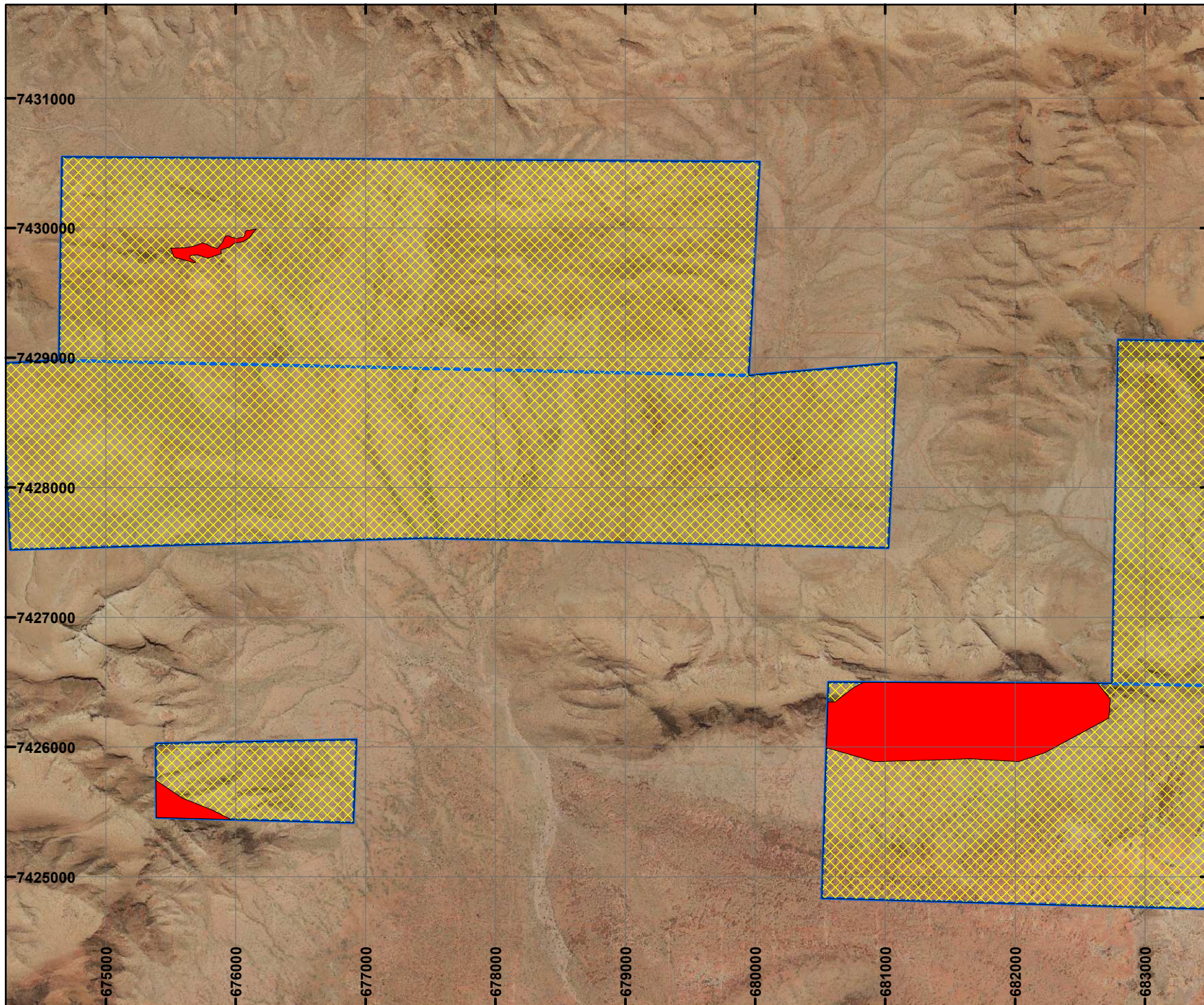
DANIEL ENDACOTT Date 20/12/2018
Officer with delegated authority under Section 20 of
the Environmental Protection Act 1986

Information derived from this map should be confirmed with the data custodian acknowledged by the agency acronym in the legend.






WA Crown Copyright 2002

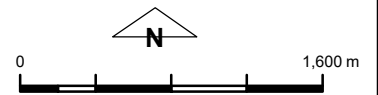
PLAN 6545/3G



LEGEND

-  Mining Tenements
- Clearing Instruments**
 -  Areas Approved to Clear
 -  Areas Subject to Condition 5(a)

Orthophotography sourced from Landgate



Scale 1:40,000
(Approximate when reproduced at A4)

Geocentric Datum Australia 1994

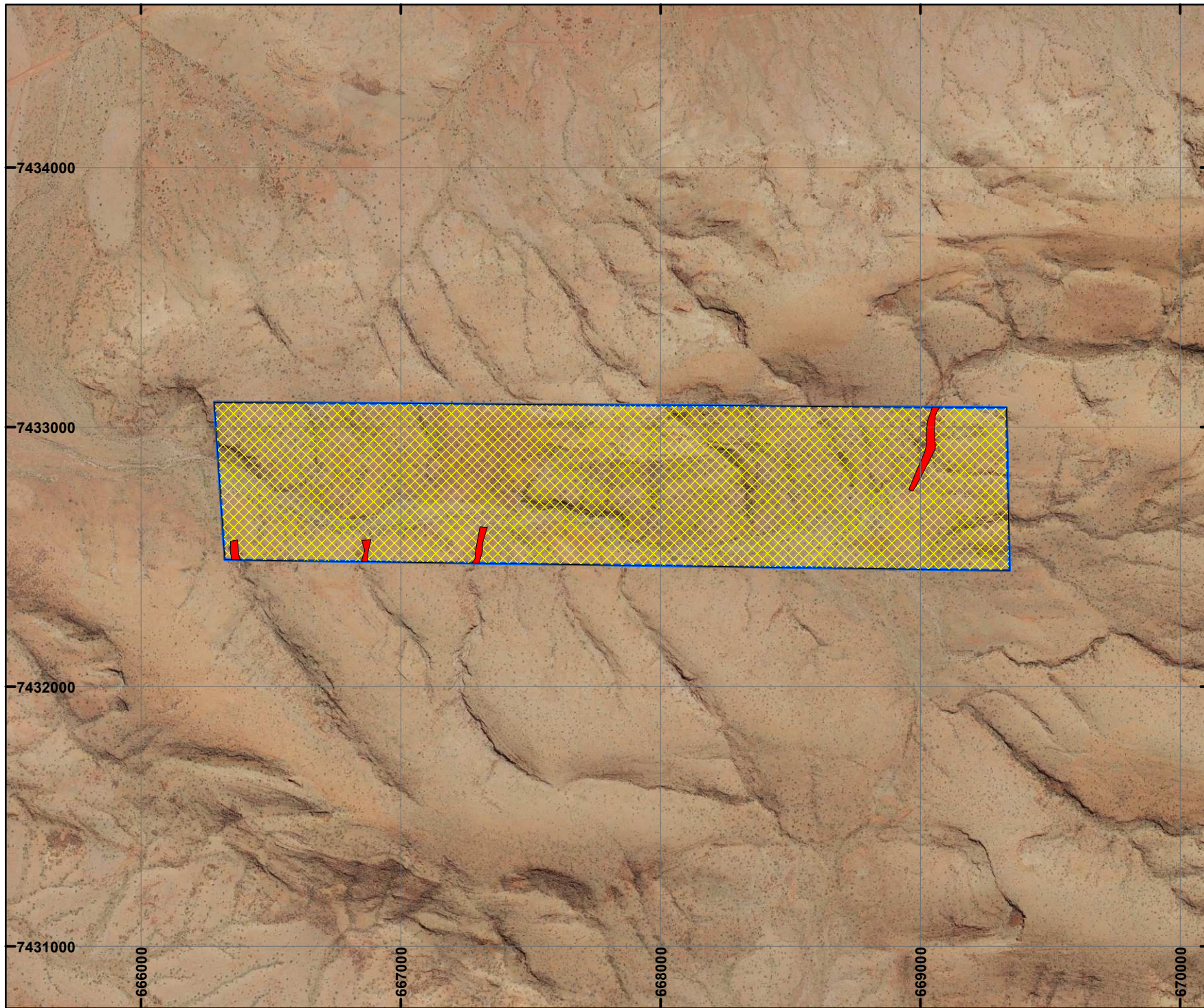
Note: the data in this map have not been projected. This may result in geometric distortion or measurement inaccuracies.


DANIEL ENDACOTT Date 20/12/2018
Officer with delegated authority under Section 20 of the Environmental Protection Act 1986

Information derived from this map should be confirmed with the data custodian acknowledged by the agency acronym in the legend.



PLAN 6545/3H




LEGEND

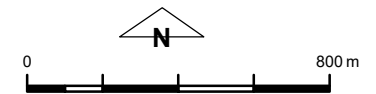
 Mining Tenements

Clearing Instruments

 Areas Approved to Clear

 Areas Subject to Condition 5(a)

Orthophotography sourced from Landgate



Scale 1:20,000
(Approximate when reproduced at A4)

Geocentric Datum Australia 1994

Note: the data in this map have not been projected. This may result in geometric distortion or measurement inaccuracies.



DANIEL ENDACOTT Date 20/12/2018
Officer with delegated authority under Section 20 of
the Environmental Protection Act 1986

Information derived from this map should be confirmed with the data custodian acknowledged by the agency acronym in the legend.

