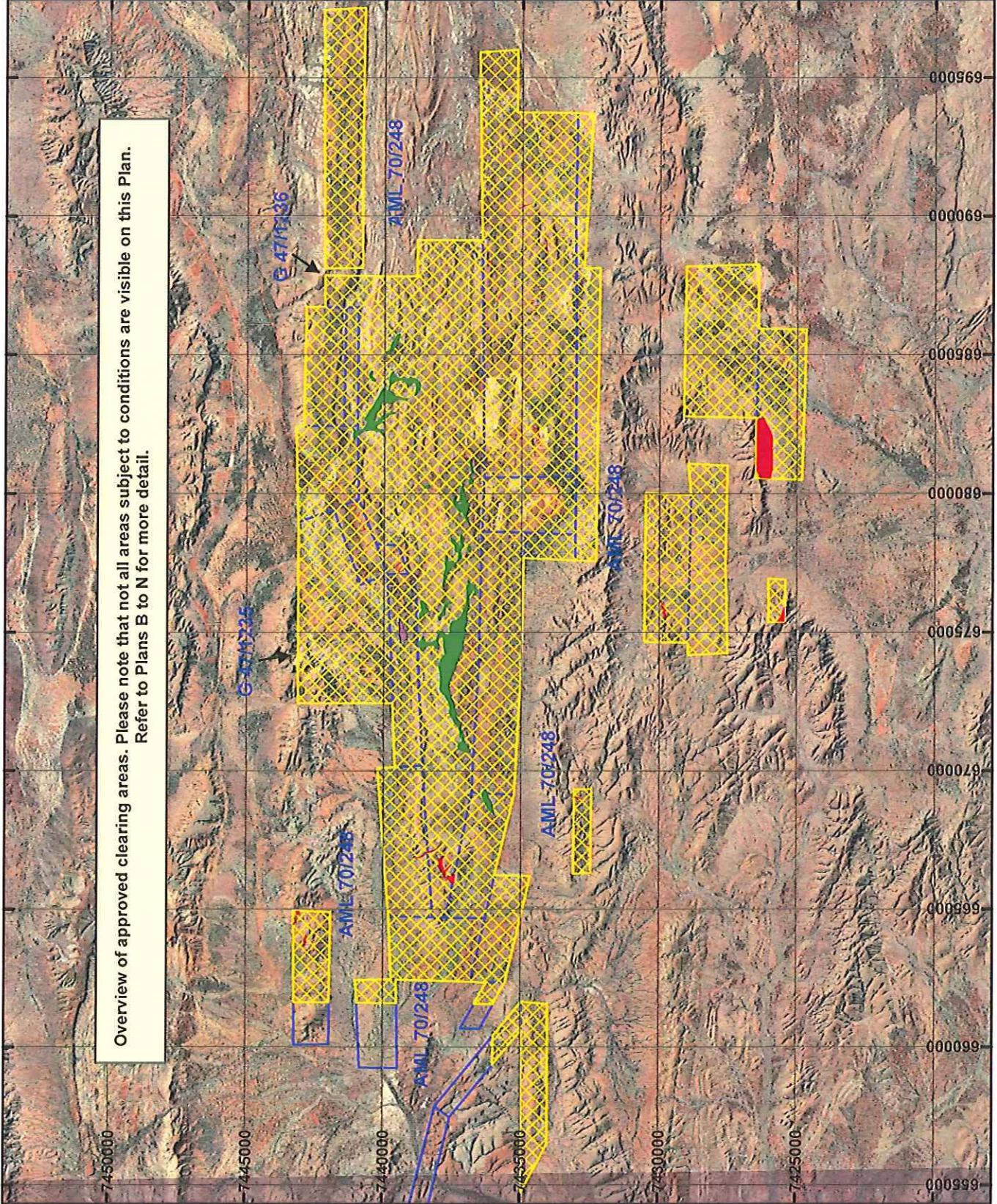


PLAN 6545/1A

Overview of approved clearing areas. Please note that not all areas subject to conditions are visible on this Plan. Refer to Plans B to N for more detail.



LEGEND

- Mining Tenements
- Clearing Instruments
- Areas Approved to Clear
- Areas Subject to Conditions
- Areas Subject to Conditions
- Areas Subject to Conditions
- Areas Subject to Conditions



Scale 1:200,000
(Approximate when reproduced at A4)

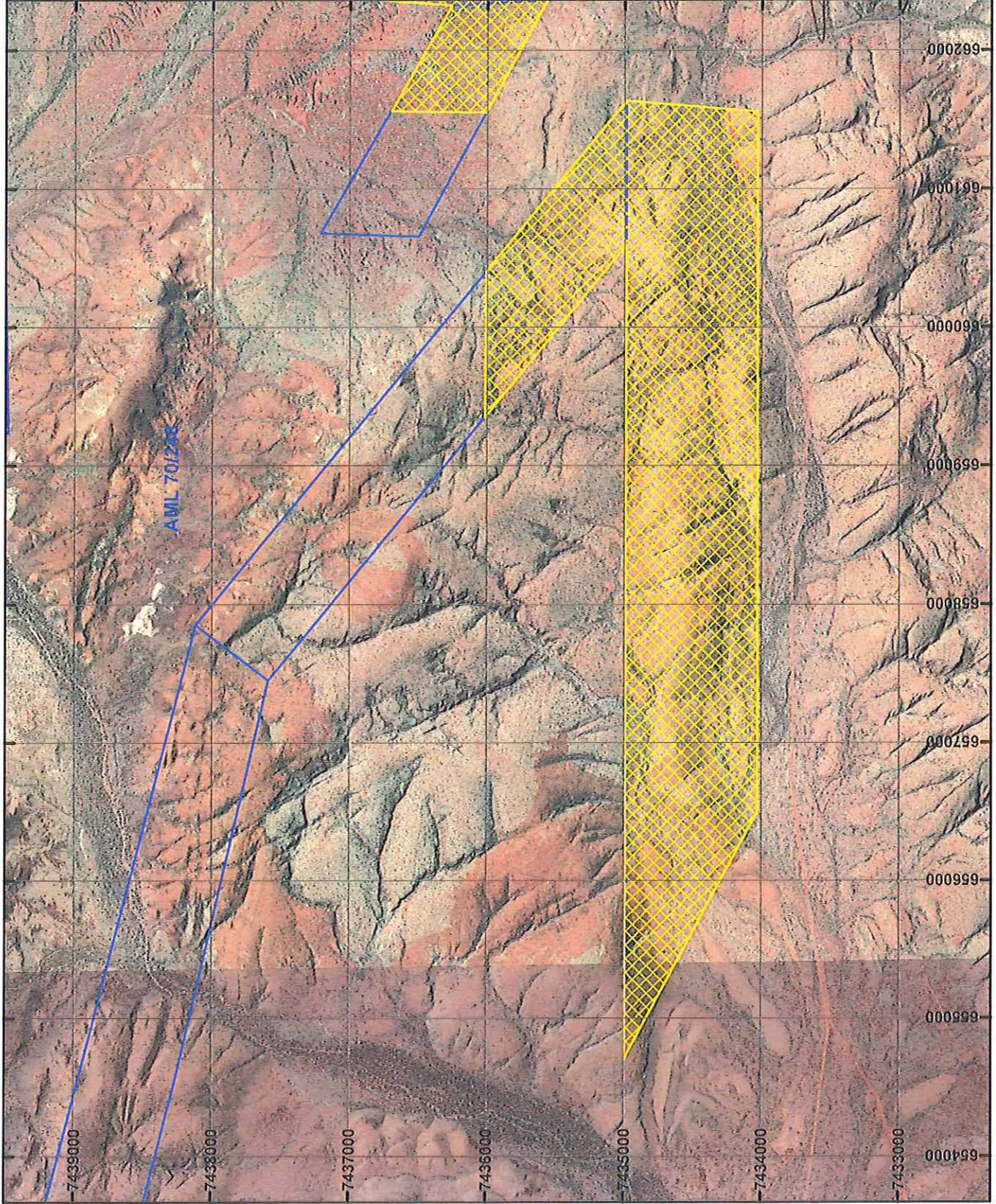
Geocentric Datum Australia 1994

Note: the dots in this map have not been
adjusted. This may result in geometric
distortion or measurement inaccuracies.

STIEVE TANTALA Date 11/6/15

Officer with delegated authority under Section 20 of
the Environmental Protection Act 1986
Information derived from this map should be
confirmed with the data custodian acknowledged
by the agency acronym in the legend.

PLAN 6545/1B



LEGEND

- Mining Tenements
- Clearing Instruments
- Areas Approved to Clear
- Areas Subject to Conditions
- Areas Subject to Conditions
- Areas Subject to Conditions
- Areas Subject to Conditions



0 1.6 Km

Scale 1:40,000
(Approximate when reproduced at A4)

Geocentric Datum Australia 1994

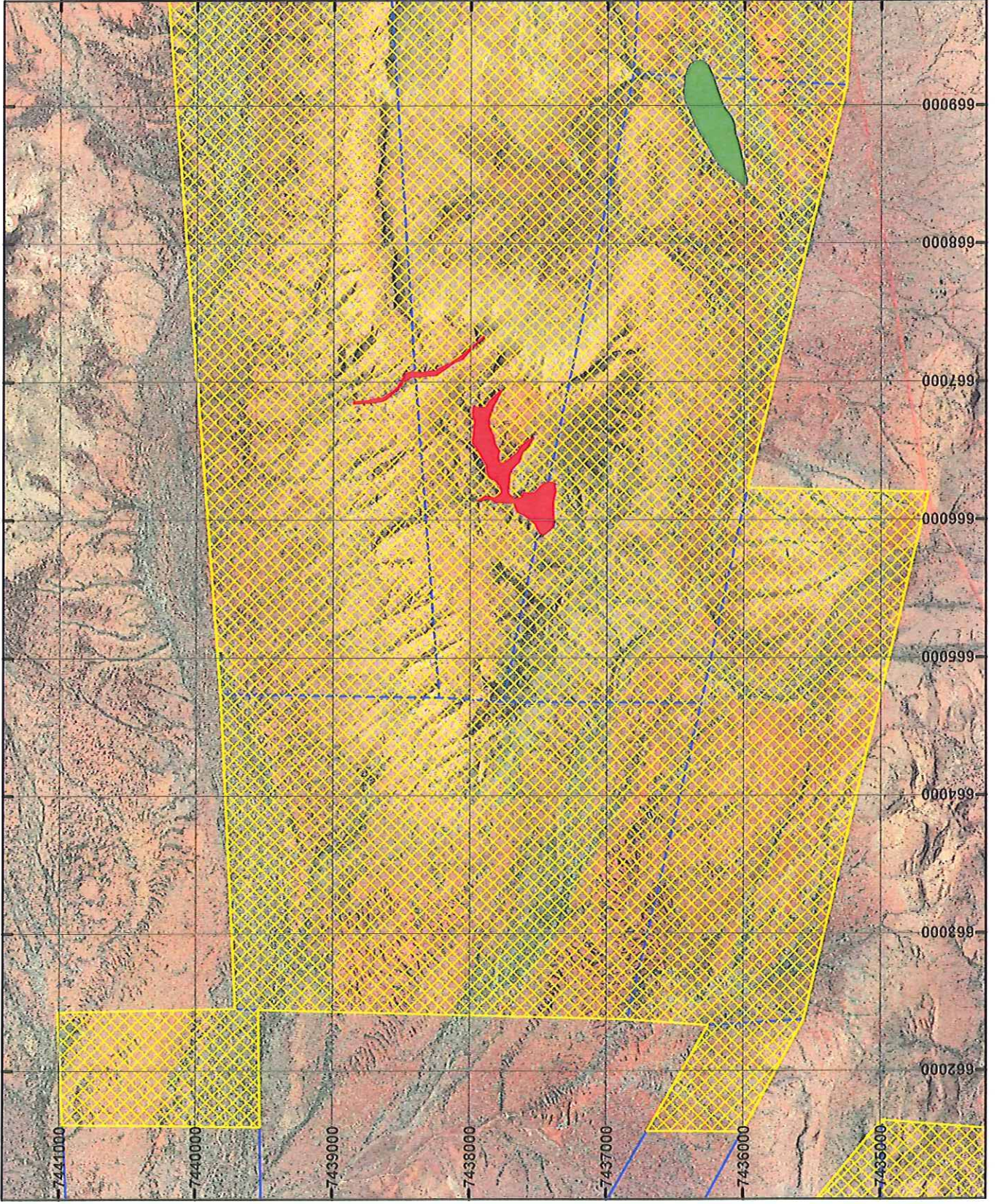
Note: The data in this map have not been projected. This may result in geometric distortion or measurement inaccuracies.

STEVE TANTALA

01/01/16

Officer with delegated authority under Section 20 of the Environmental Protection Act 1986
Information derived from this map should be confirmed with the data custodian acknowledged by the agency acronym in the legend.

PLAN 6545/1C



LEGEND

- Mining Tenements
- Clearing Instruments
- Areas Approved to Clear
- Areas Subject to Conditions
- Areas Subject to Conditions
- Areas Subject to Conditions
- Areas Subject to Conditions



0 1.6 Km

Scale 1:40,000
(Approximate when reproduced at A4)

Geocentric Datum Australia 1994

Note: the data in this map have not been checked. This may result in geometric distortion or measurement inaccuracies.

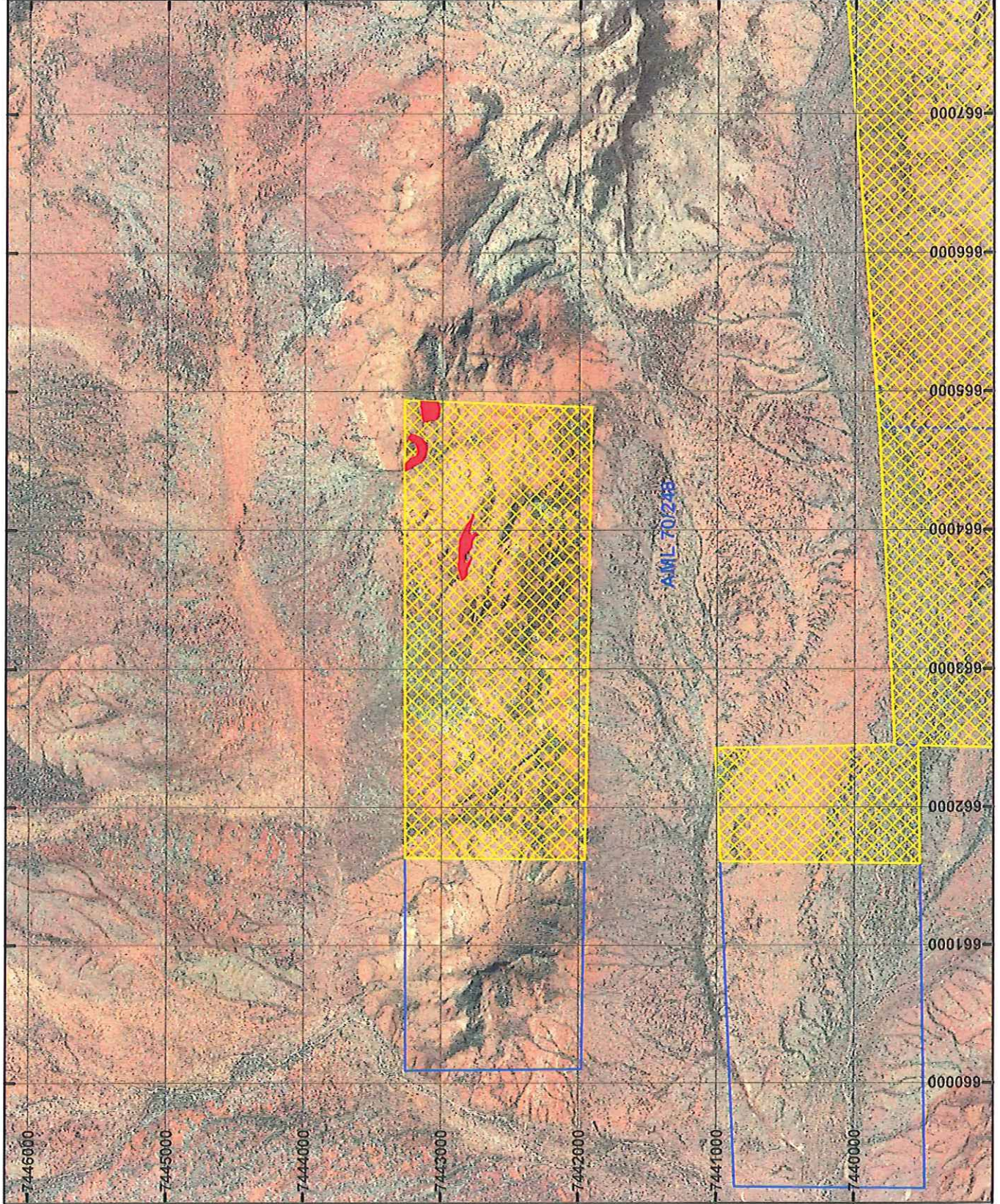
Date 11/6/15

STEVE TANTALA

Officer with delegated authority under Section 20 of the Environmental Protection Act 1986

Information derived from this map should be confirmed with the data custodian acknowledged by the agency acronym in the legend.

PLAN 6545/1D



LEGEND

- Mining Tenements
- Clearing Instruments
- Areas Approved to Clear
- Areas Subject to Conditions
- Areas Subject to Conditions
- Areas Subject to Conditions
- Areas Subject to Conditions



0 1.6 Km

Scale 1:40,000
(Approximate when reproduced at A4)

Geocentric Datum Australia 1994

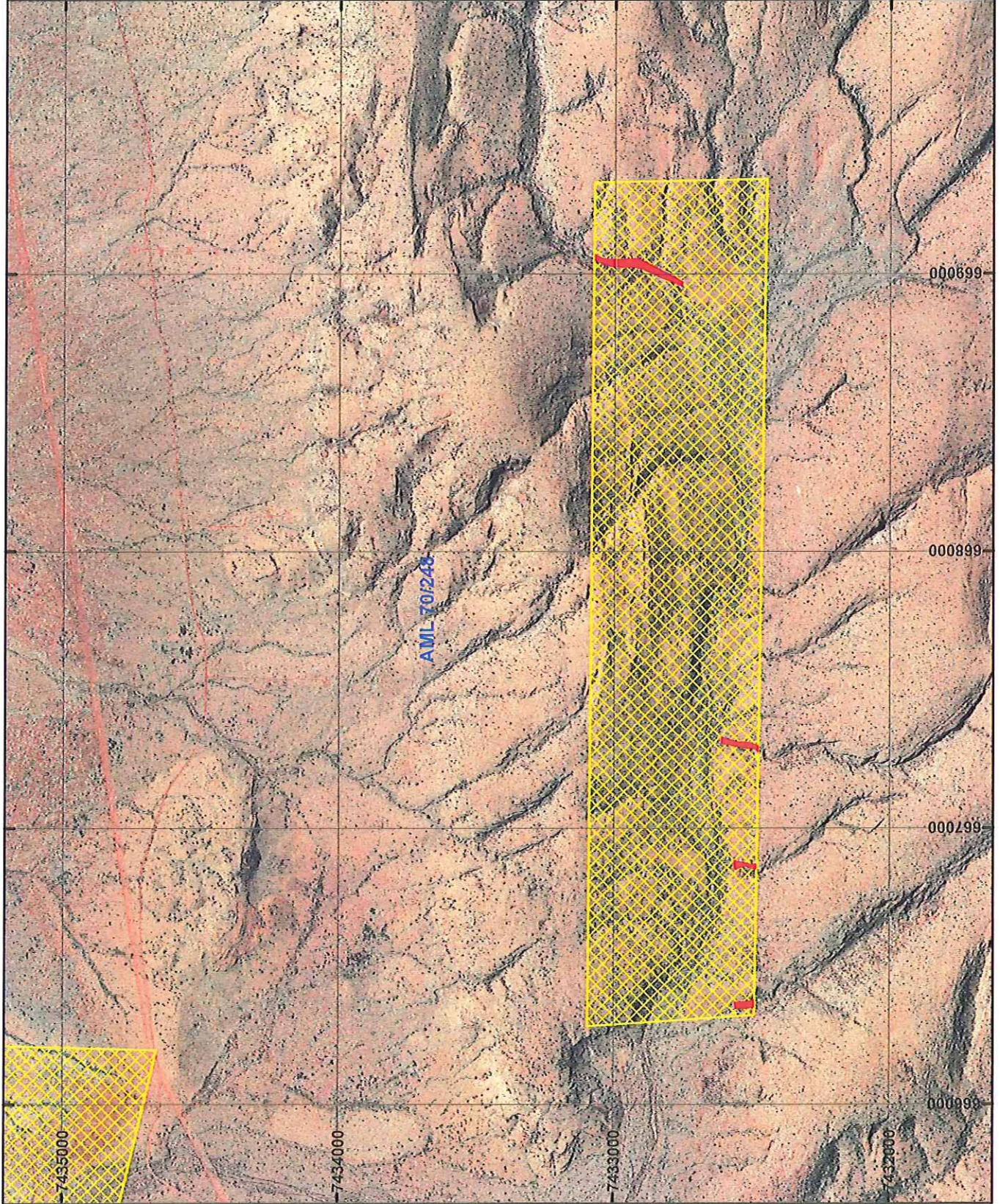
Note: the data in this map have not been projected. They may result in geographic distortion or measurement inaccuracies.

STEVE TANTACK Date 12/6/15

Officer with delegated authority under Section 20 of the Environmental Protection Act 1986

Information derived from this map should be confirmed with the data custodian acknowledged by the agency acronym in the legend.

PLAN 6545/1E



LEGEND

- Mining Tenements
- Clearing Instruments
- Areas Approved to Clear
- Areas Subject to Conditions
- Areas Subject to Conditions
- Areas Subject to Conditions
- Areas Subject to Conditions



0 0.8 Km

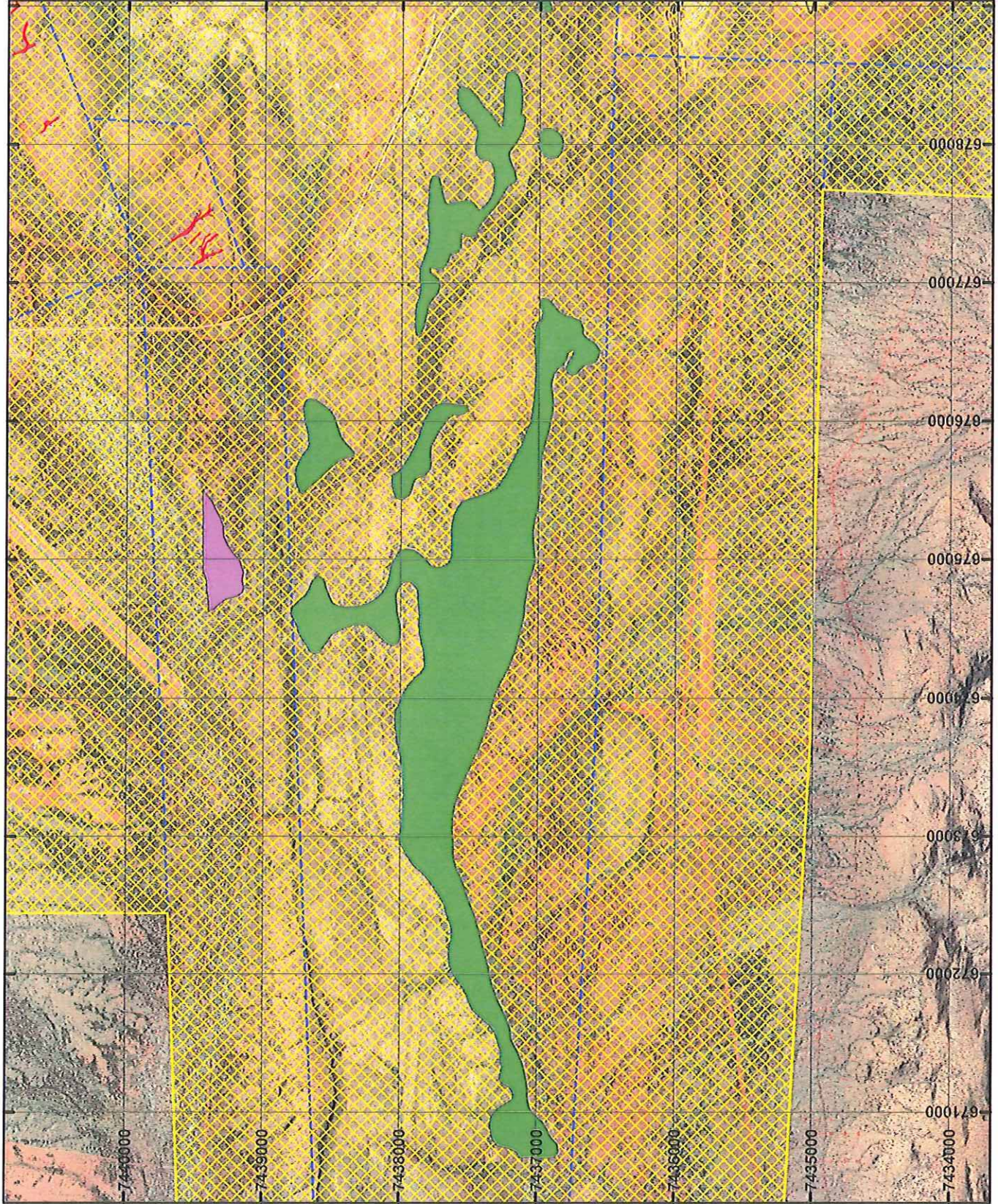
Scale 1:20 000
(Approximate when reproduced at A4)

Geocentric Datum Australia 1994
Note: the data in this map have not been projected. This may result in geometric distortion or measurement inaccuracies.

STEVE TANTALA Date 11/11/15

Officer with delegated authority under Section 20 of the Environmental Protection Act 1986
Information derived from this map should be confirmed with the data custodian acknowledged by the agency acronym in the legend.

PLAN 6545/1F



LEGEND

- Mining Tenements
- Clearing Instruments
- Areas Approved to Clear
- Areas Subject to Conditions
- Areas Subject to Conditions
- Areas Subject to Conditions
- Areas Subject to Conditions



Scale 1:40,000
(Approximate when reproduced at A4)

Geocentric Datum Australia 1994

Note: the data in this map have not been projected. This may result in geometric distortion or measurement inaccuracies.

STEVE TANTALA Date 11/1/15

Officer with delegated authority under Section 20 of the Environmental Protection Act 1986
Information derived from this map should be confirmed with the data custodian acknowledged by the agency acronym in the legend.

PLAN 6545/1G



LEGEND

- Mining Tenements
- Clearing Instruments
- Areas Approved to Clear
- Areas Subject to Conditions
- Areas Subject to Conditions
- Areas Subject to Conditions
- Areas Subject to Conditions



0 0.8 Km

Scale 1:20 000
(Approximate when reproduced at A4)

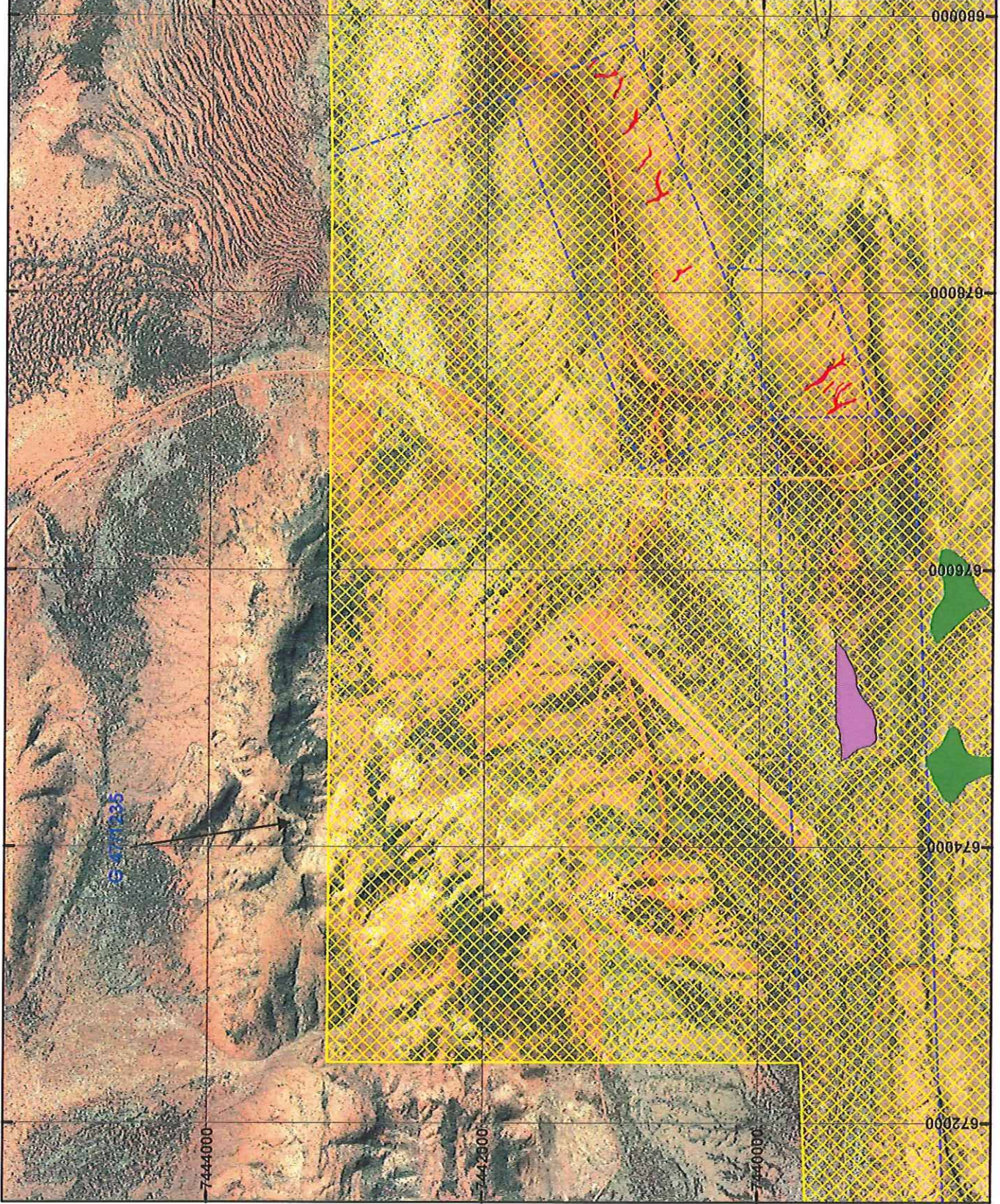
Geocentric Datum Australia 1994

Note: the data in this map have not been projected. This may result in geometric distortion or measurement inaccuracies.

STEVE TANTACK Date 11/6/15

Officer with delegated authority under Section 20 of the Environmental Protection Act 1986
Information derived from this map should be confirmed with the data custodian acknowledged by the agency acronym in the legend.

PLAN 6545/1H



LEGEND

- Mining Tenements
- Clearing Instruments
- Areas Approved to Clear
- Areas Subject to Conditions
- Areas Subject to Conditions
- Areas Subject to Conditions
- Areas Subject to Conditions



0 1.6 Km

Scale 1:40,000
(Approximate when reproduced at A4)

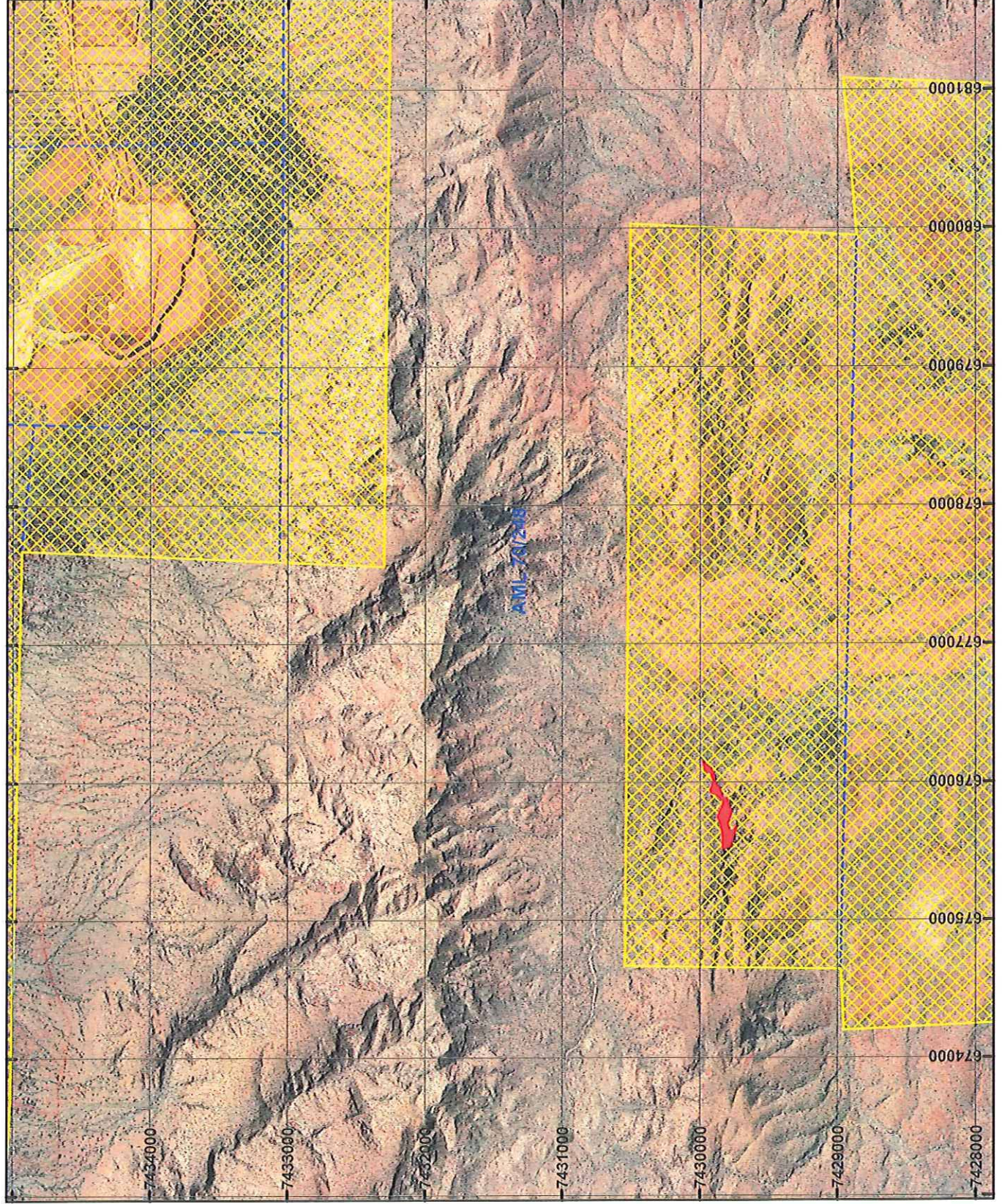
Geocentric Datum Australia 1994

Note: the data in this map have not been projected. This may result in geometric distortion or measurement inaccuracies.

..... Date 11/6/15
STEVIE TANTALA

Officer with delegated authority under Section 20 of the Environmental Protection Act 1986
Information derived from this map should be confirmed with the data custodian acknowledged by the agency acronym in the legend.

PLAN 6545/11



LEGEND

- Mining Tenements
- Clearing Instruments
- Areas Approved to Clear
- Areas Subject to Conditions
- Areas Subject to Conditions
- Areas Subject to Conditions
- Areas Subject to Conditions



0 1.6 Km

Scale 1:40,000
(Approximate when reproduced at A4)

Geocentric Datum Australia 1994

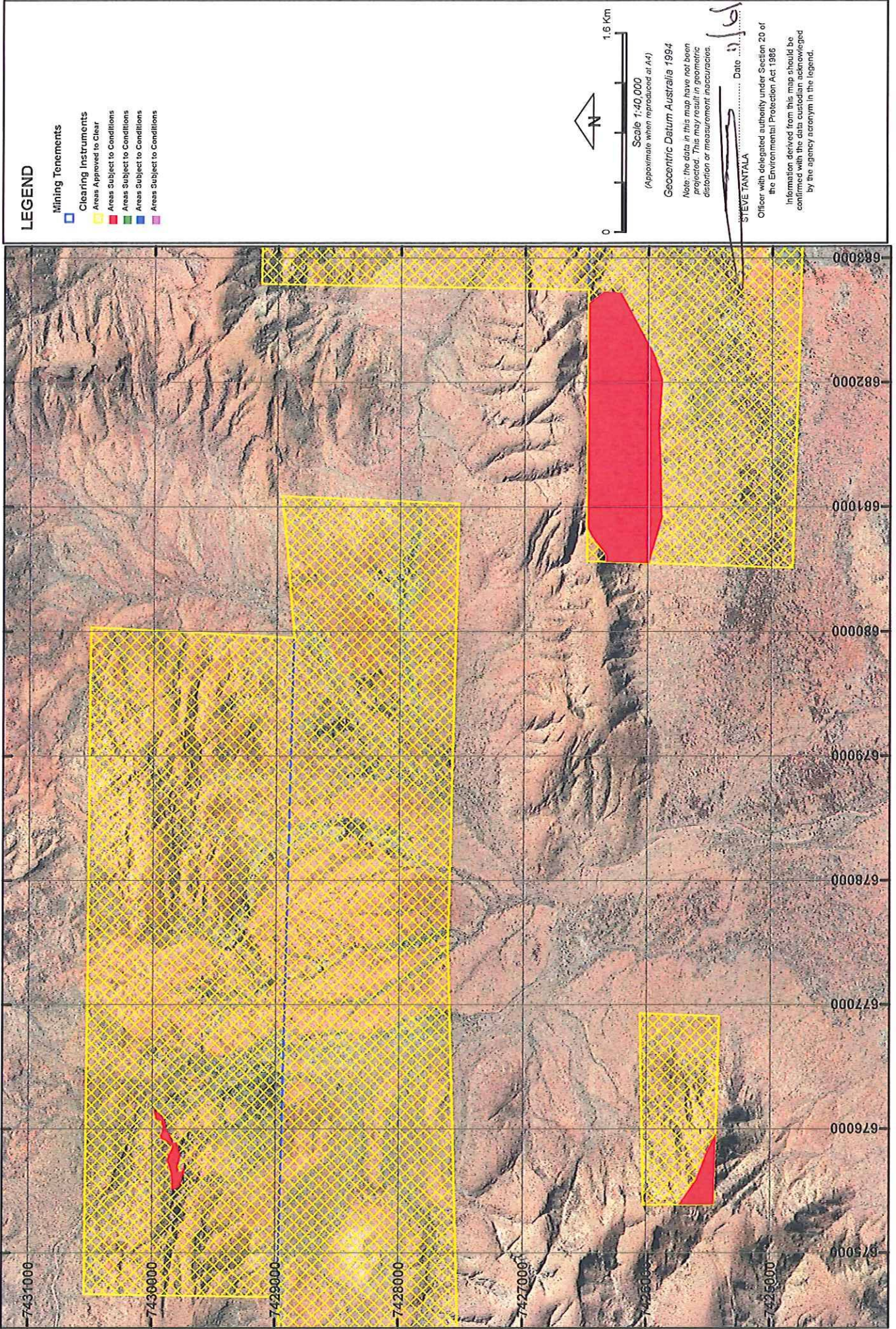
Note: the dots in this map have not been projected. They may result in graphic distortion or measurement inaccuracies.

STEVE TANTALA Date: 12/10/11

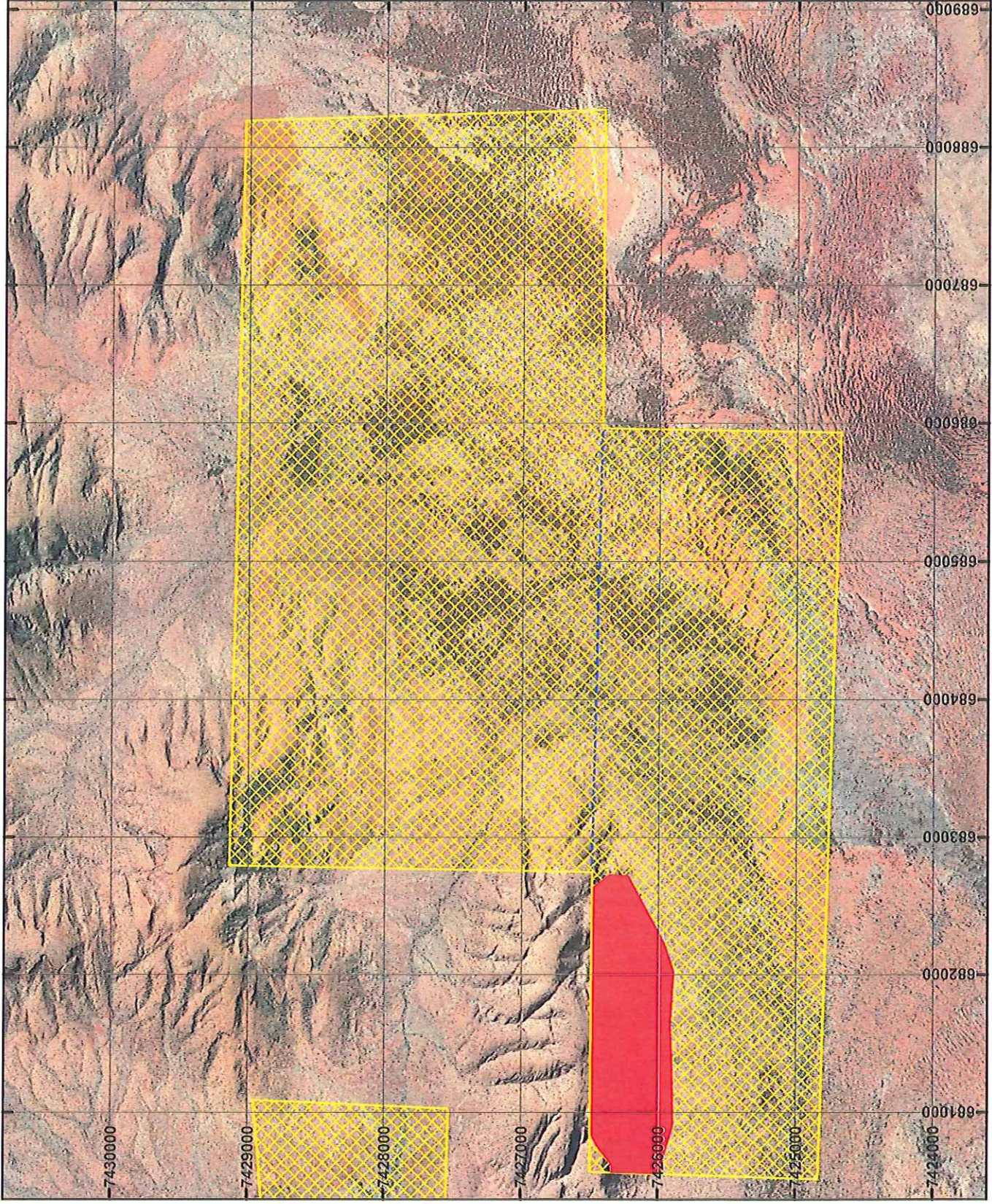
Officer with delegated authority under Section 20 of the Environmental Protection Act 1986

Information derived from this map should be confirmed with the data custodian acknowledged by the agency acronym in the legend.

PLAN 6545/1J



PLAN 6545/1K



LEGEND

- Mining Tenements
- Clearing Instruments
- Areas Approved to Clear
- Areas Subject to Conditions
- Areas Subject to Conditions
- Areas Subject to Conditions
- Areas Subject to Conditions



0 1.6 Km

Scale 1:40,000
(Approximate when reproduced at A4)

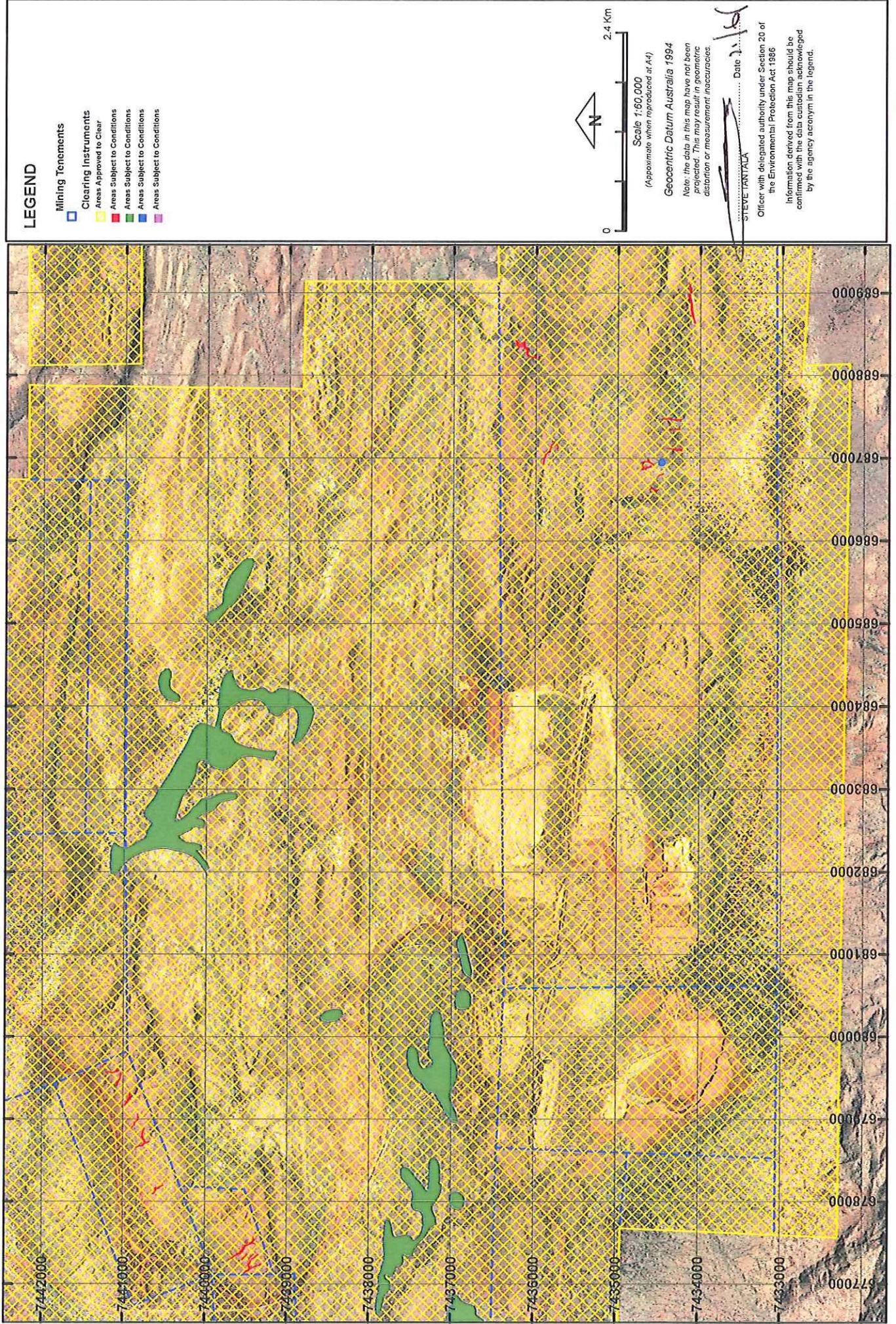
Geocentric Datum Australia 1994

Note: the data in this map have not been projected. This may result in geometric distortion or measurement inaccuracies.

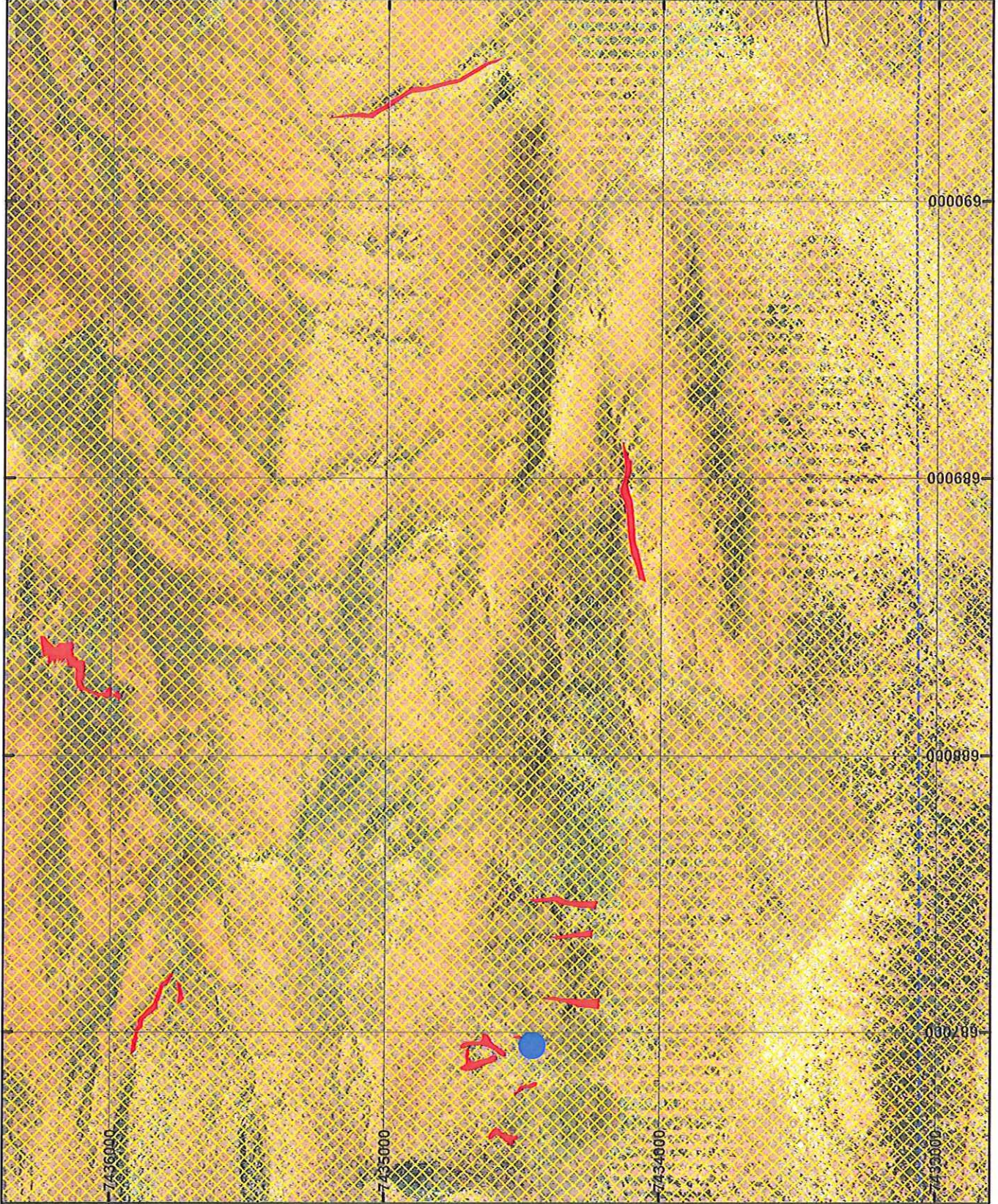
STEVE TANTALAKI Date 10/10/11

Officer with delegated authority under Section 20 of the Environmental Protection Act 1986
Information derived from this map should be confirmed with the data custodian acknowledged by the agency acronym in the legend.

PLAN 6545/1L



PLAN 6545/1M



LEGEND

- Mining Tenements
- Clearing Instruments
- Areas Approved to Clear
- Areas Subject to Conditions
- Areas Subject to Conditions
- Areas Subject to Conditions
- Areas Subject to Conditions



0 0.8 Km

Scale 1:20,000
(Approximate when reproduced at A4)

Geocentric Datum Australia 1994

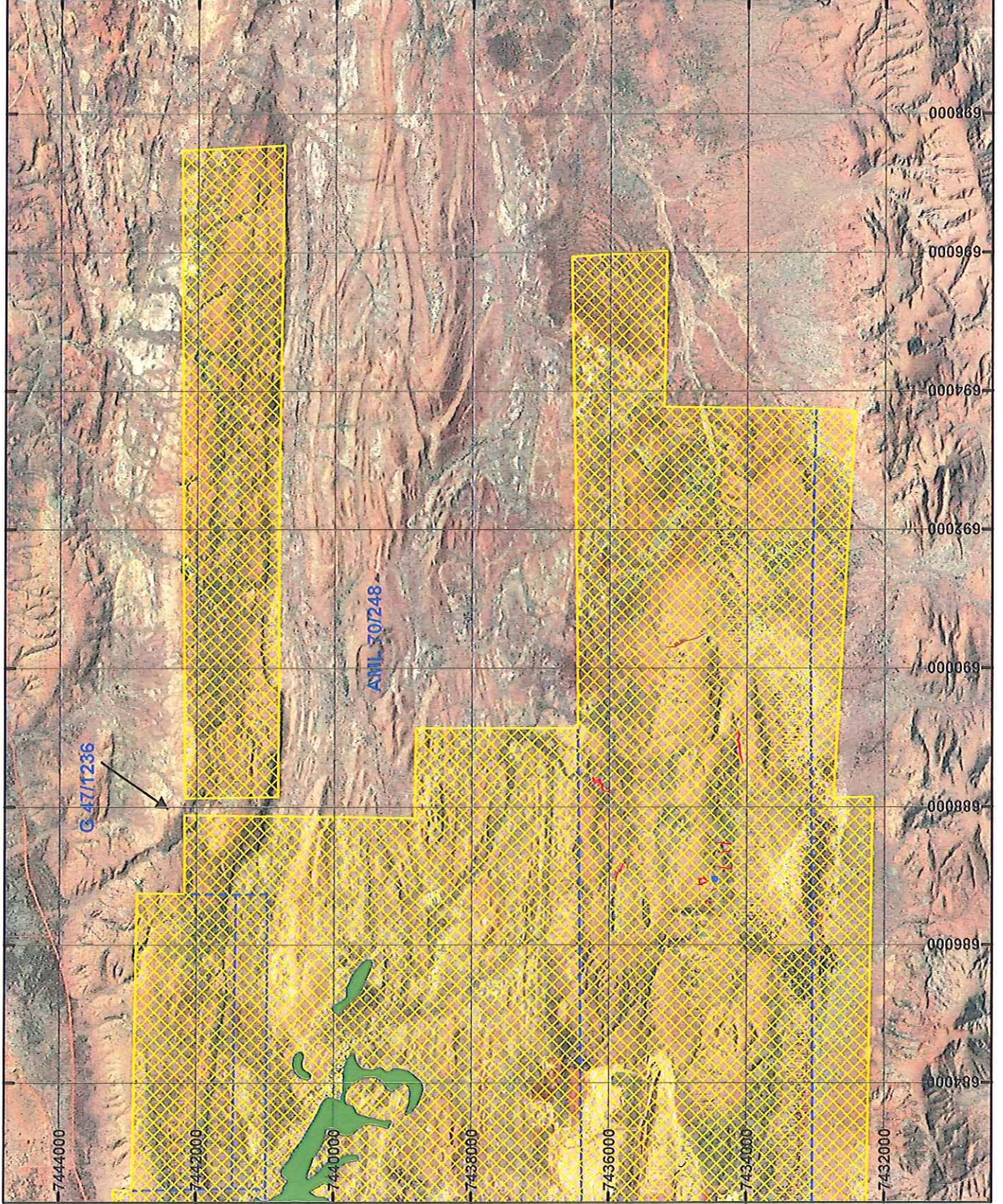
Note: the data in this map have not been projected. This may result in geometric distortion or measurement inaccuracies.

STEVE TANTALA

Date 11/6/15

Officer with delegated authority under Section 20 of the Environmental Protection Act 1986
Information derived from this map should be confirmed with the data custodian acknowledged by the agency acronym in the legend.

PLAN 6545/1N



LEGEND

- Mining Tenements
- Clearing Instruments
- Areas Approved to Clear
- Areas Subject to Conditions
- Areas Subject to Conditions
- Areas Subject to Conditions
- Areas Subject to Conditions



0 3.2 Km

Scale 1:80,000
(Approximate when reproduced at A4)

Geocentric Datum Australia 1994

Note: the data in this map have not been projected. This may result in geometric distortion or measurement inaccuracies.

STEVE TANTALA Date 16/01/15

Officer with delegated authority under Section 20 of the Environmental Protection Act 1986
Information derived from this map should be confirmed with the data custodian acknowledged by the agency acronym in the legend.