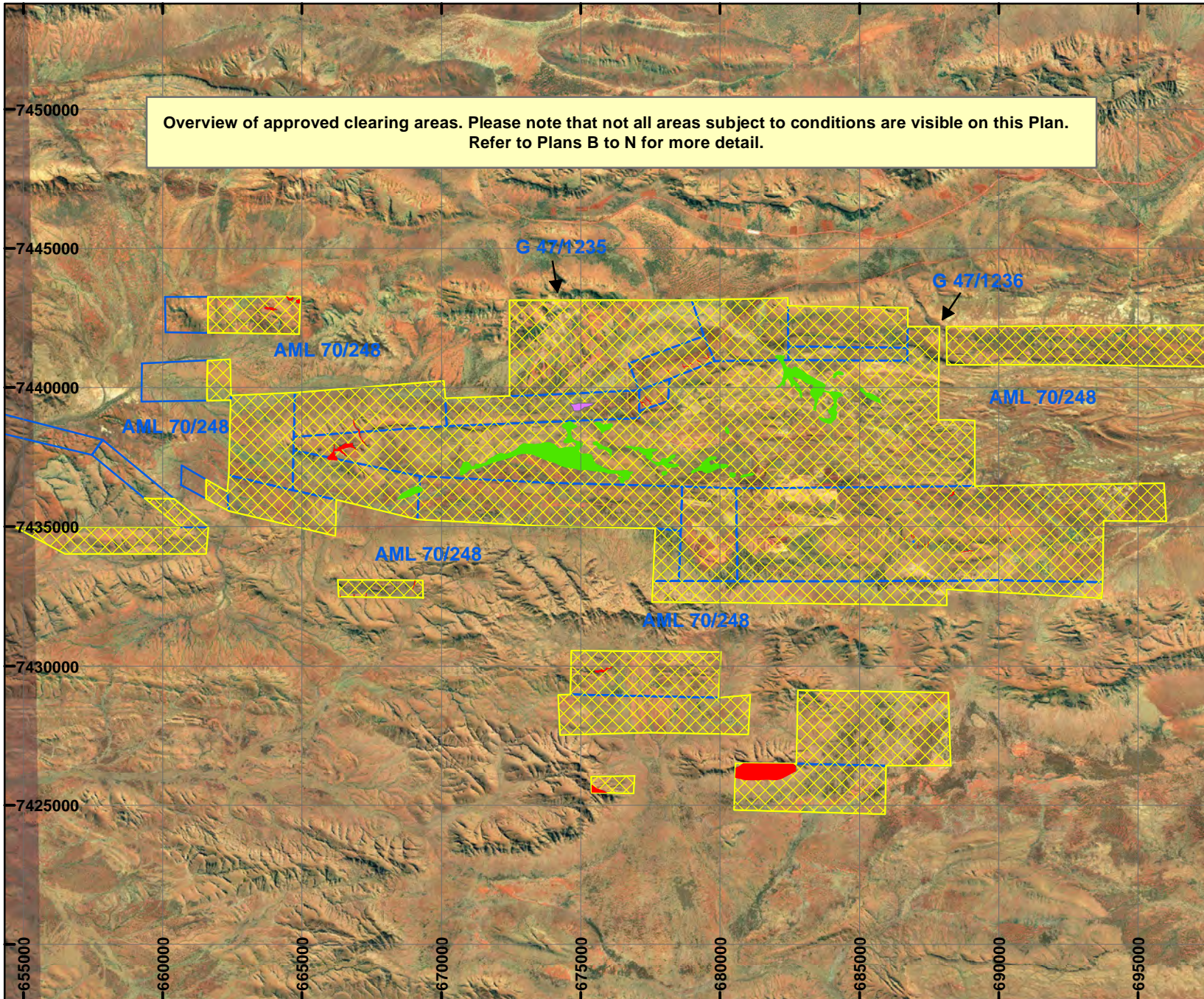


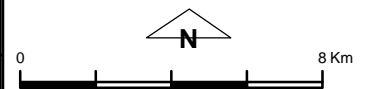
PLAN 6545/2A



Overview of approved clearing areas. Please note that not all areas subject to conditions are visible on this Plan. Refer to Plans B to N for more detail.

LEGEND

- Mining Tenements
- Clearing Instruments
 - ▨ Areas Approved to Clear
 - Areas Subject to Conditions
 - Areas Subject to Conditions
 - Areas Subject to Conditions
 - Areas Subject to Conditions



Scale 1:200,000
(Approximate when reproduced at A4)

Geocentric Datum Australia 1994

Note: the data in this map have not been projected. This may result in geometric distortion or measurement inaccuracies.

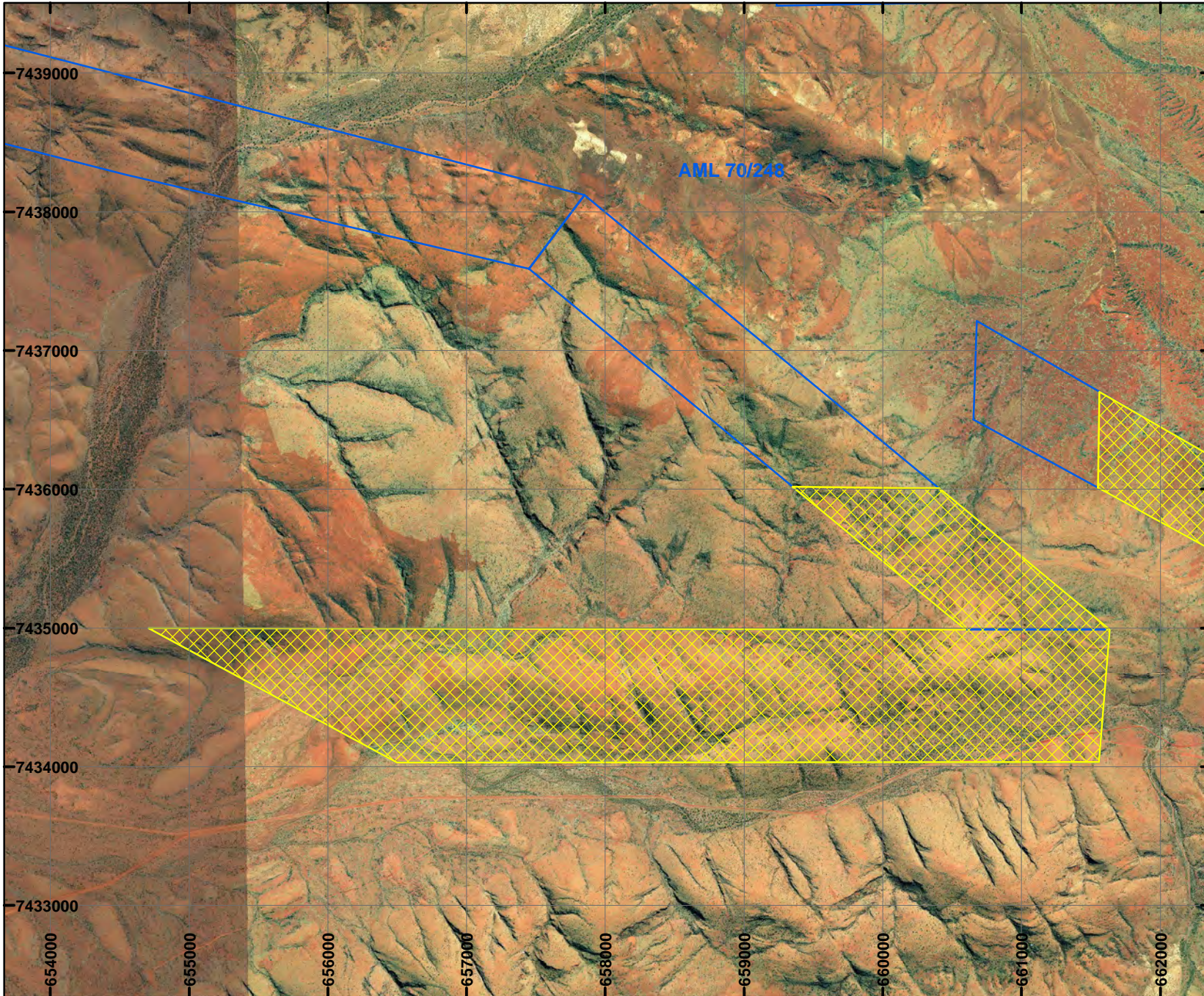
Marnie Leybourne

MARNIE LEYBOURNE Date 17 / 11 / 2016

Officer with delegated authority under Section 20 of the Environmental Protection Act 1986

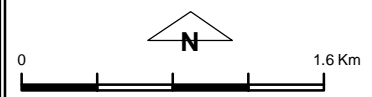
Information derived from this map should be confirmed with the data custodian acknowledged by the agency acronym in the legend.

PLAN 6545/2B



LEGEND

- Mining Tenements
- Clearing Instruments**
 - ▨ Areas Approved to Clear
 - Areas Subject to Conditions
 - Areas Subject to Conditions
 - Areas Subject to Conditions
 - Areas Subject to Conditions



Scale 1:40,000
(Approximate when reproduced at A4)

Geocentric Datum Australia 1994

Note: the data in this map have not been projected. This may result in geometric distortion or measurement inaccuracies.

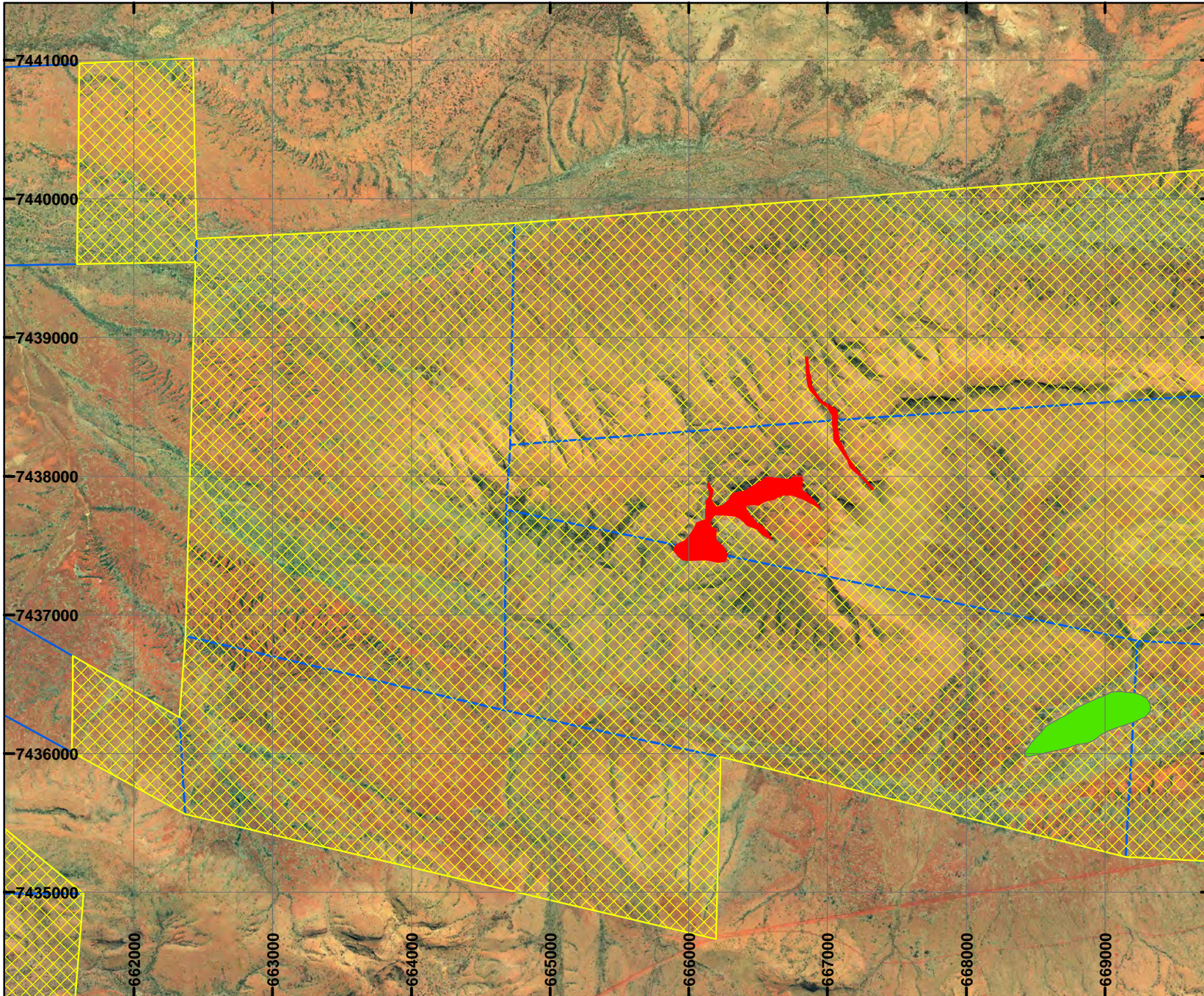
Marnie Leysbo

MARNIE LEYBOURNE Date 17 / 11 / 2016


Officer with delegated authority under Section 20 of the Environmental Protection Act 1986




Information derived from this map should be confirmed with the data custodian acknowledged by the agency acronym in the legend.

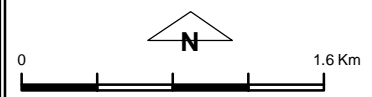
PLAN 6545/2C



LEGEND

-  Mining Tenements

- Clearing Instruments**
-  Areas Approved to Clear
-  Areas Subject to Conditions
-  Areas Subject to Conditions
-  Areas Subject to Conditions
-  Areas Subject to Conditions



Scale 1:40,000
(Approximate when reproduced at A4)

Geocentric Datum Australia 1994

Note: the data in this map have not been projected. This may result in geometric distortion or measurement inaccuracies.

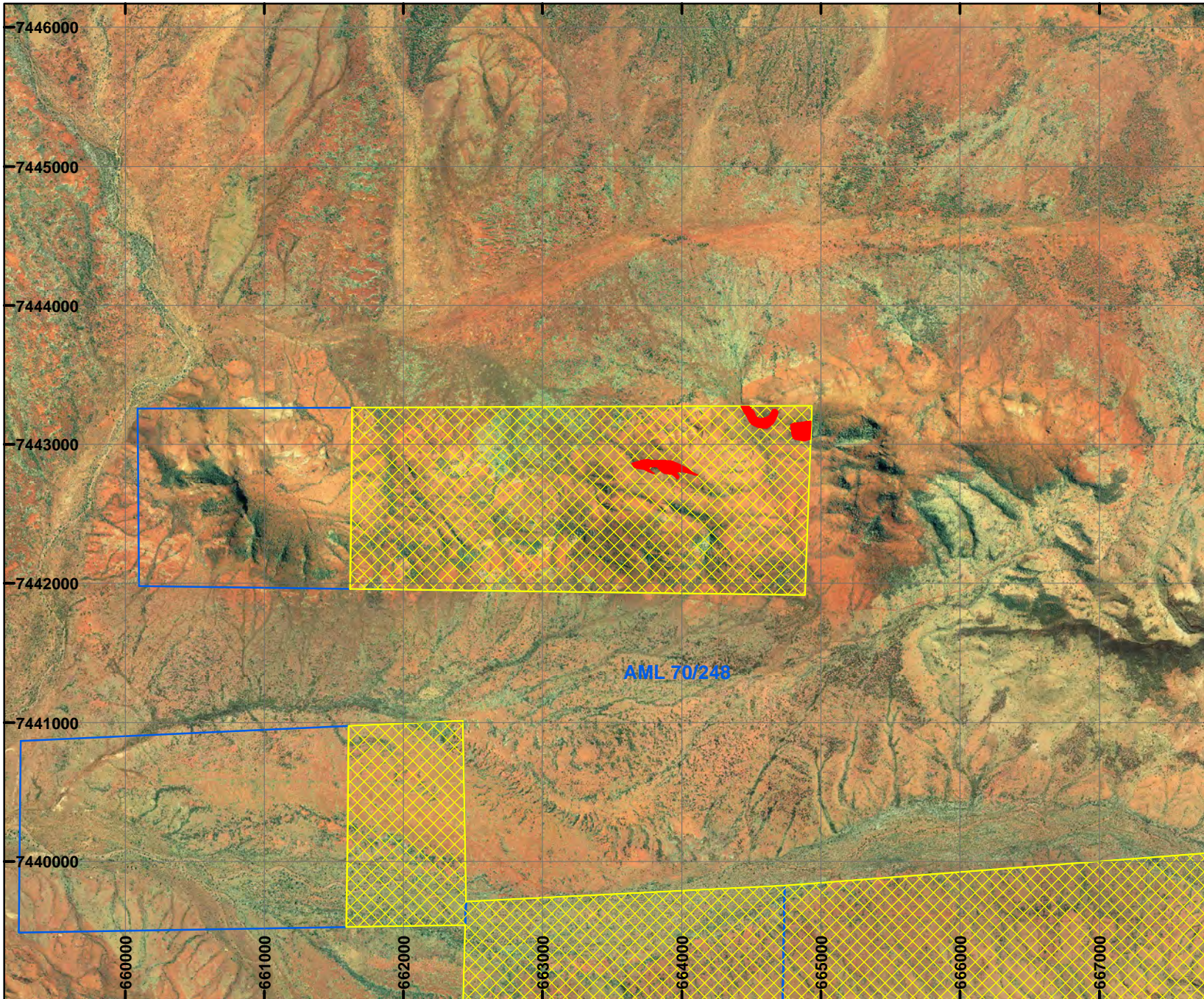
Marnie Leybourne

MARNIE LEYBOURNE Date 17 / 11 / 2016

Officer with delegated authority under Section 20 of the Environmental Protection Act 1986

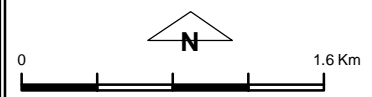
Information derived from this map should be confirmed with the data custodian acknowledged by the agency acronym in the legend.

PLAN 6545/2D



LEGEND

- Mining Tenements
- Clearing Instruments**
 - ▨ Areas Approved to Clear
 - Areas Subject to Conditions
 - Areas Subject to Conditions
 - Areas Subject to Conditions
 - Areas Subject to Conditions



Scale 1:40,000
(Approximate when reproduced at A4)

Geocentric Datum Australia 1994

Note: the data in this map have not been projected. This may result in geometric distortion or measurement inaccuracies.

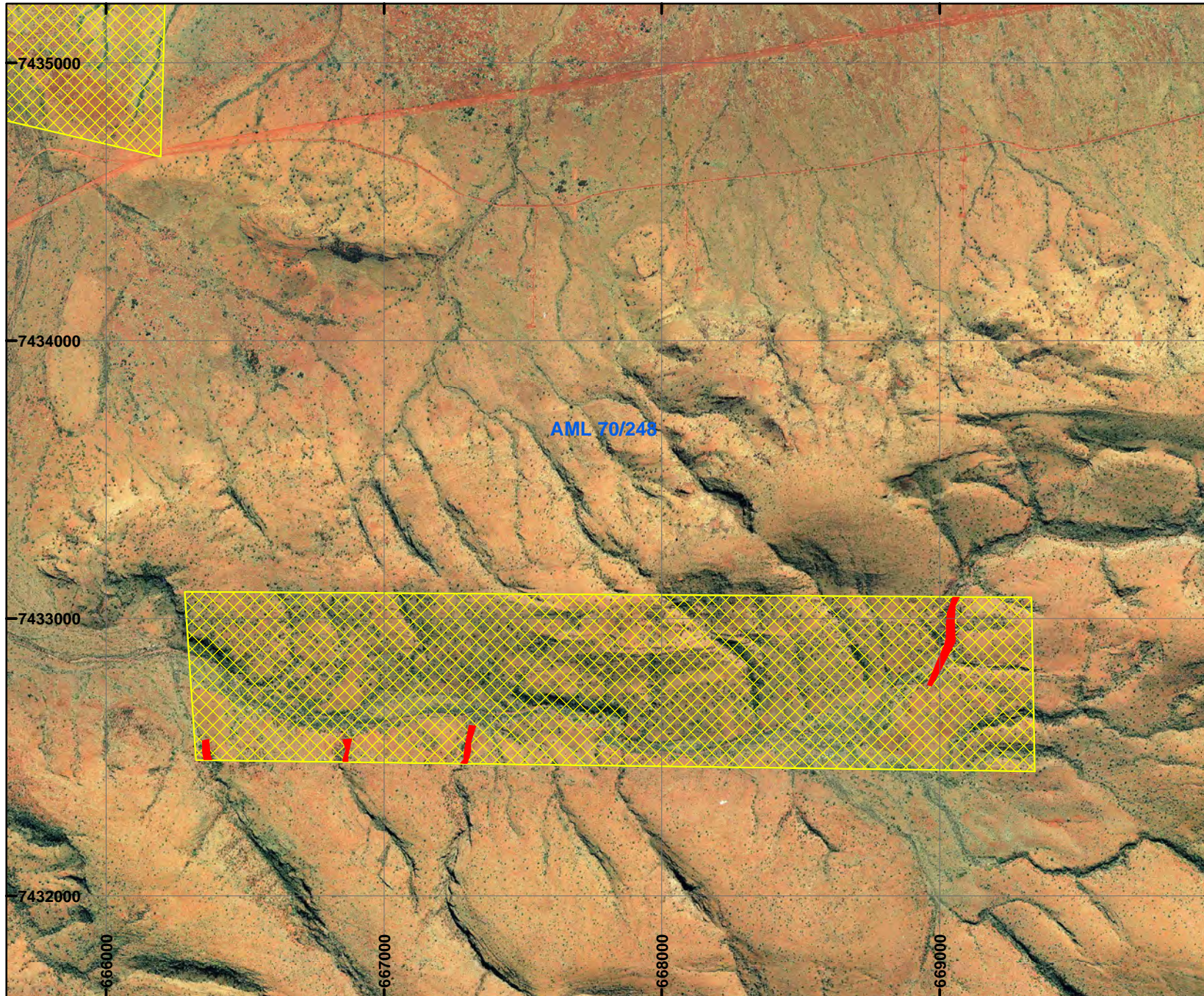
Marnie Leybourne

MARNIE LEYBOURNE Date 17 / 11 / 2016

Officer with delegated authority under Section 20 of the Environmental Protection Act 1986

Information derived from this map should be confirmed with the data custodian acknowledged by the agency acronym in the legend.

PLAN 6545/2E

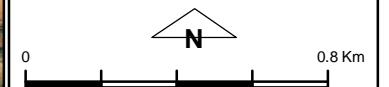


LEGEND

□ Mining Tenements

Clearing Instruments

- ▨ Areas Approved to Clear
- Areas Subject to Conditions
- Areas Subject to Conditions
- Areas Subject to Conditions
- Areas Subject to Conditions



Scale 1:20,000
(Approximate when reproduced at A4)

Geocentric Datum Australia 1994

Note: the data in this map have not been projected. This may result in geometric distortion or measurement inaccuracies.

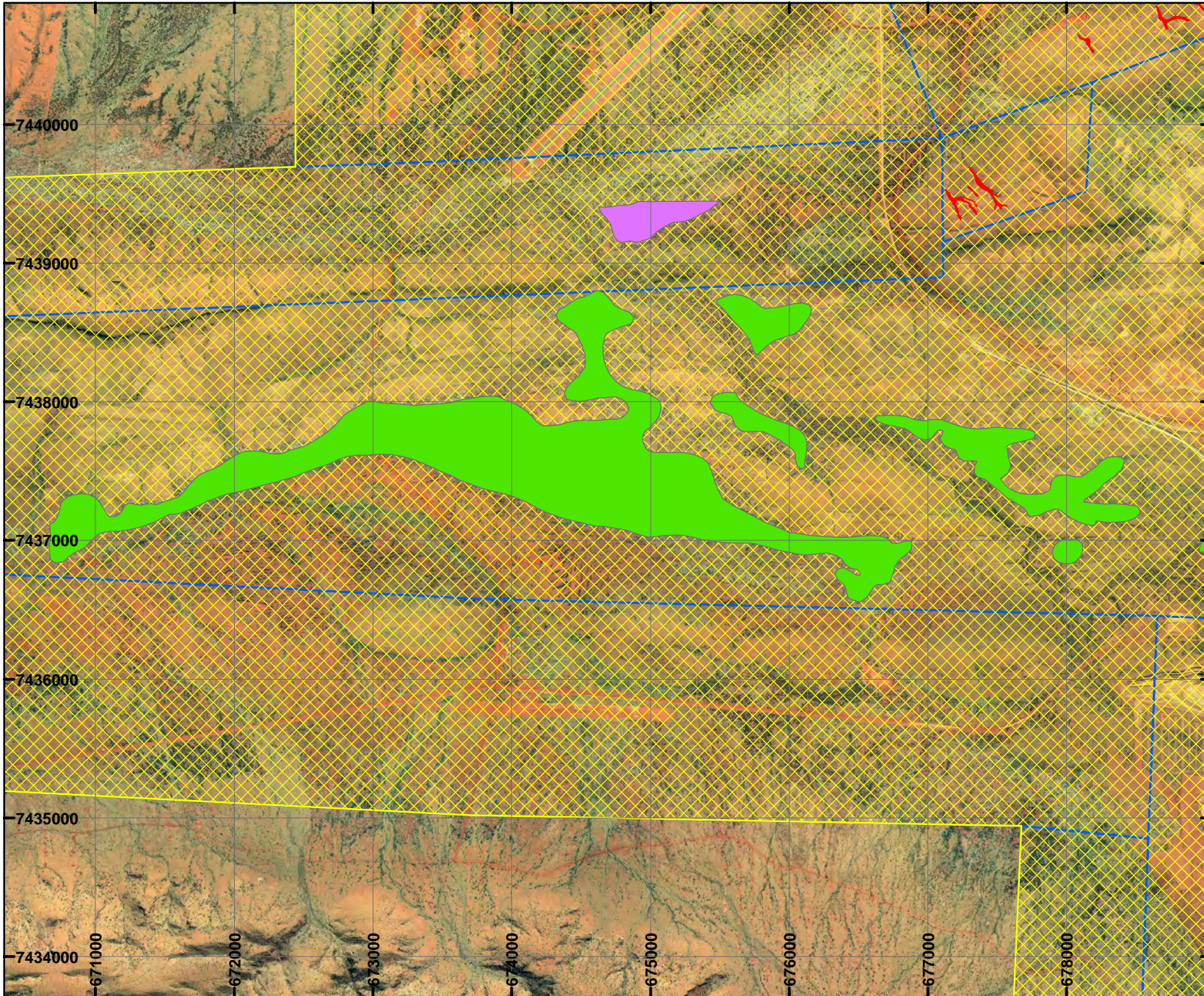
Marnie Leybourne

MARNIE LEYBOURNE Date 17 / 11 / 2016

Officer with delegated authority under Section 20 of the Environmental Protection Act 1986

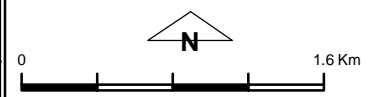
Information derived from this map should be confirmed with the data custodian acknowledged by the agency acronym in the legend.

PLAN 6545/2F



LEGEND

- Mining Tenements
- Clearing Instruments
 - ▭ Areas Approved to Clear
 - Areas Subject to Conditions
 - Areas Subject to Conditions
 - Areas Subject to Conditions
 - Areas Subject to Conditions



Scale 1:40,000
(Approximate when reproduced at A4)

Geocentric Datum Australia 1994

Note: the data in this map have not been projected. This may result in geometric distortion or measurement inaccuracies.

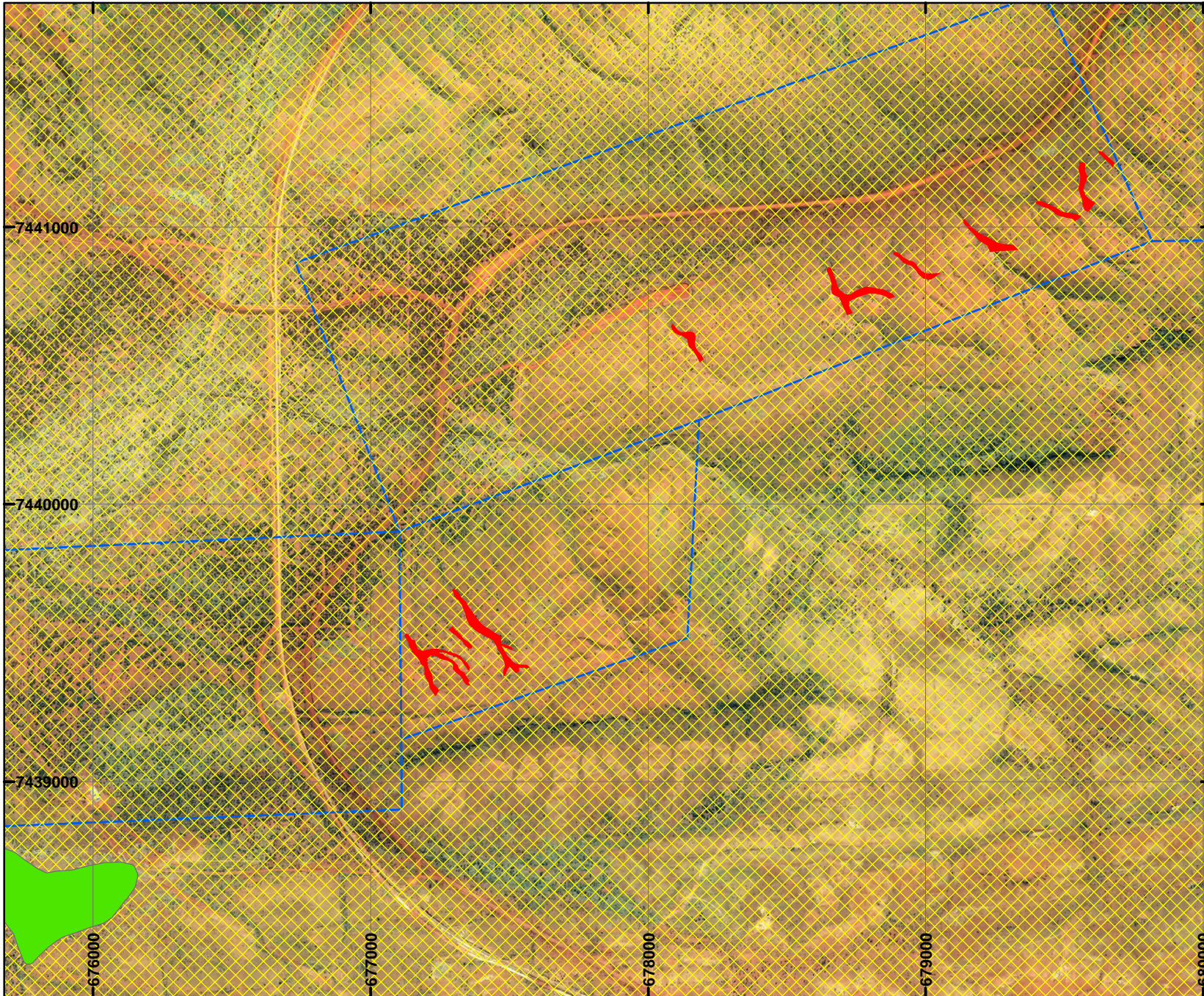
Marnie Lebourne

MARNIE LEBOURNE Date 17 / 11 / 2016

Officer with delegated authority under Section 20 of the Environmental Protection Act 1986

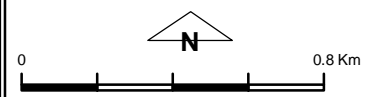
Information derived from this map should be confirmed with the data custodian acknowledged by the agency acronym in the legend.

PLAN 6545/2G



LEGEND

- Mining Tenements
- Clearing Instruments**
 - Areas Approved to Clear
 - Areas Subject to Conditions
 - Areas Subject to Conditions
 - Areas Subject to Conditions
 - Areas Subject to Conditions



Scale 1:20,000
(Approximate when reproduced at A4)

Geocentric Datum Australia 1994

Note: the data in this map have not been projected. This may result in geometric distortion or measurement inaccuracies.

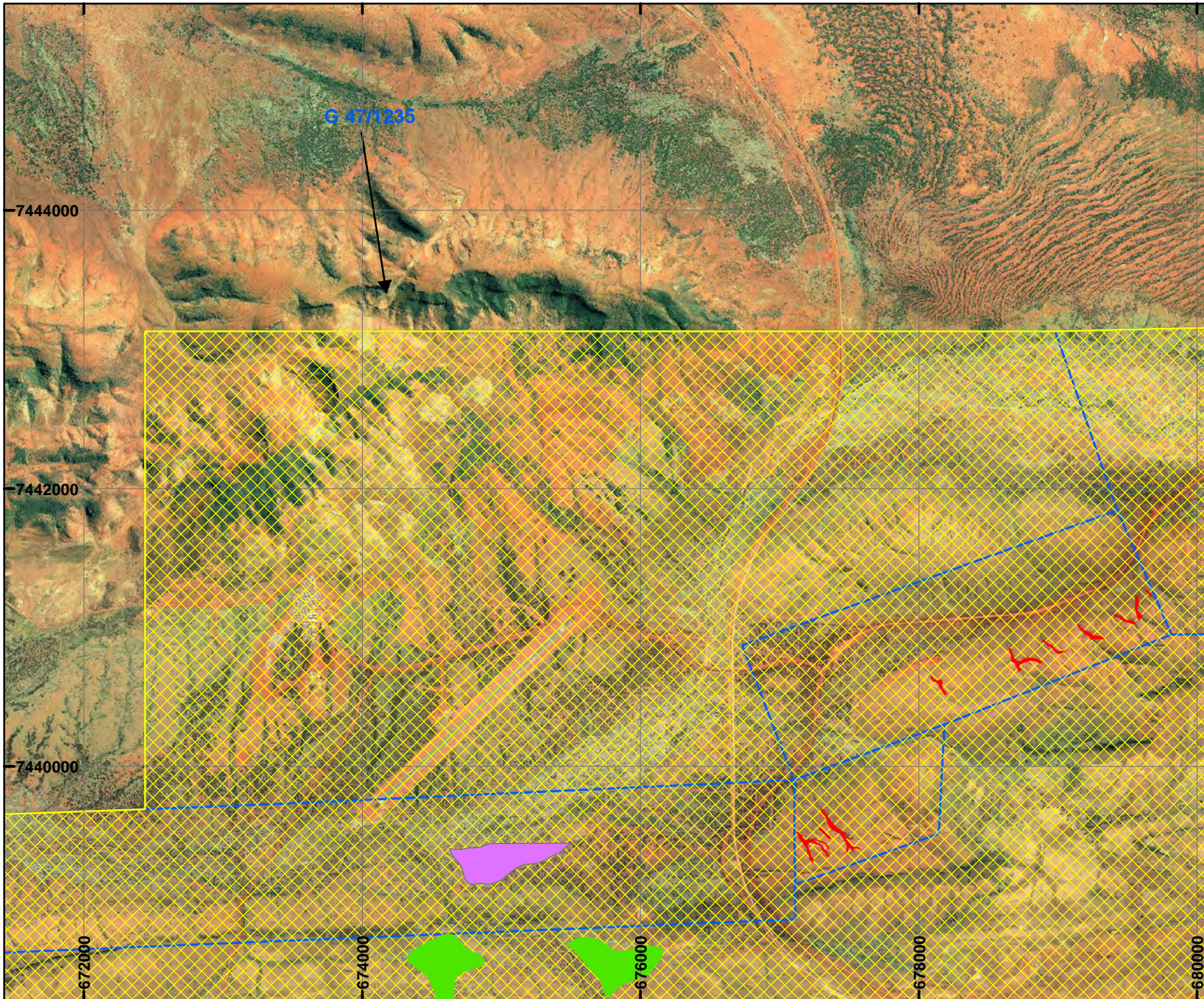
Marnie Leybourne

MARNIE LEYBOURNE Date 17 / 11 / 2016

Officer with delegated authority under Section 20 of the Environmental Protection Act 1986

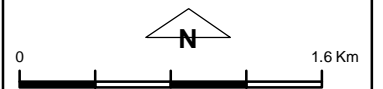
Information derived from this map should be confirmed with the data custodian, acknowledged by the agency acronym in the legend.

PLAN 6545/2H



LEGEND

- Mining Tenements
- Clearing Instruments**
 - ▨ Areas Approved to Clear
 - Areas Subject to Conditions
 - Areas Subject to Conditions
 - Areas Subject to Conditions
 - Areas Subject to Conditions



Scale 1:40,000
(Approximate when reproduced at A4)

Geocentric Datum Australia 1994

Note: the data in this map have not been projected. This may result in geometric distortion or measurement inaccuracies.

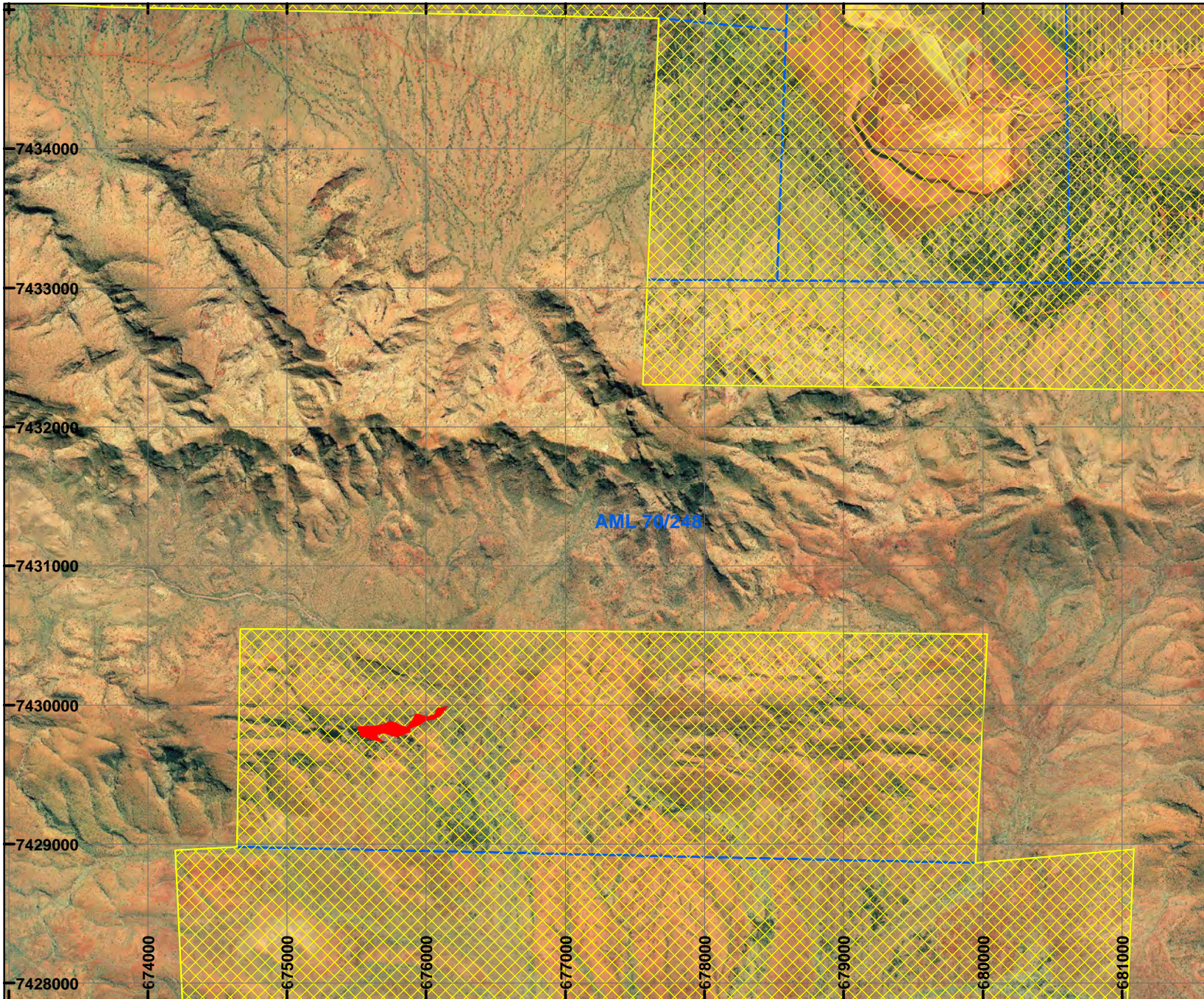
Maine Debo

MARNIE LEYBOURNE Date 17 / 11 / 2016

Officer with delegated authority under Section 20 of the Environmental Protection Act 1986

Information derived from this map should be confirmed with the data custodian acknowledged by the agency acronym in the legend.

PLAN 6545/2I

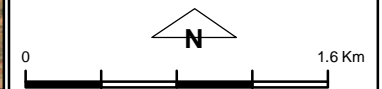


LEGEND

□ Mining Tenements

Clearing Instruments

- ▨ Areas Approved to Clear
- ▨ Areas Subject to Conditions
- ▨ Areas Subject to Conditions
- ▨ Areas Subject to Conditions
- ▨ Areas Subject to Conditions



Scale 1:40,000
(Approximate when reproduced at A4)

Geocentric Datum Australia 1994

Note: the data in this map have not been projected. This may result in geometric distortion or measurement inaccuracies.

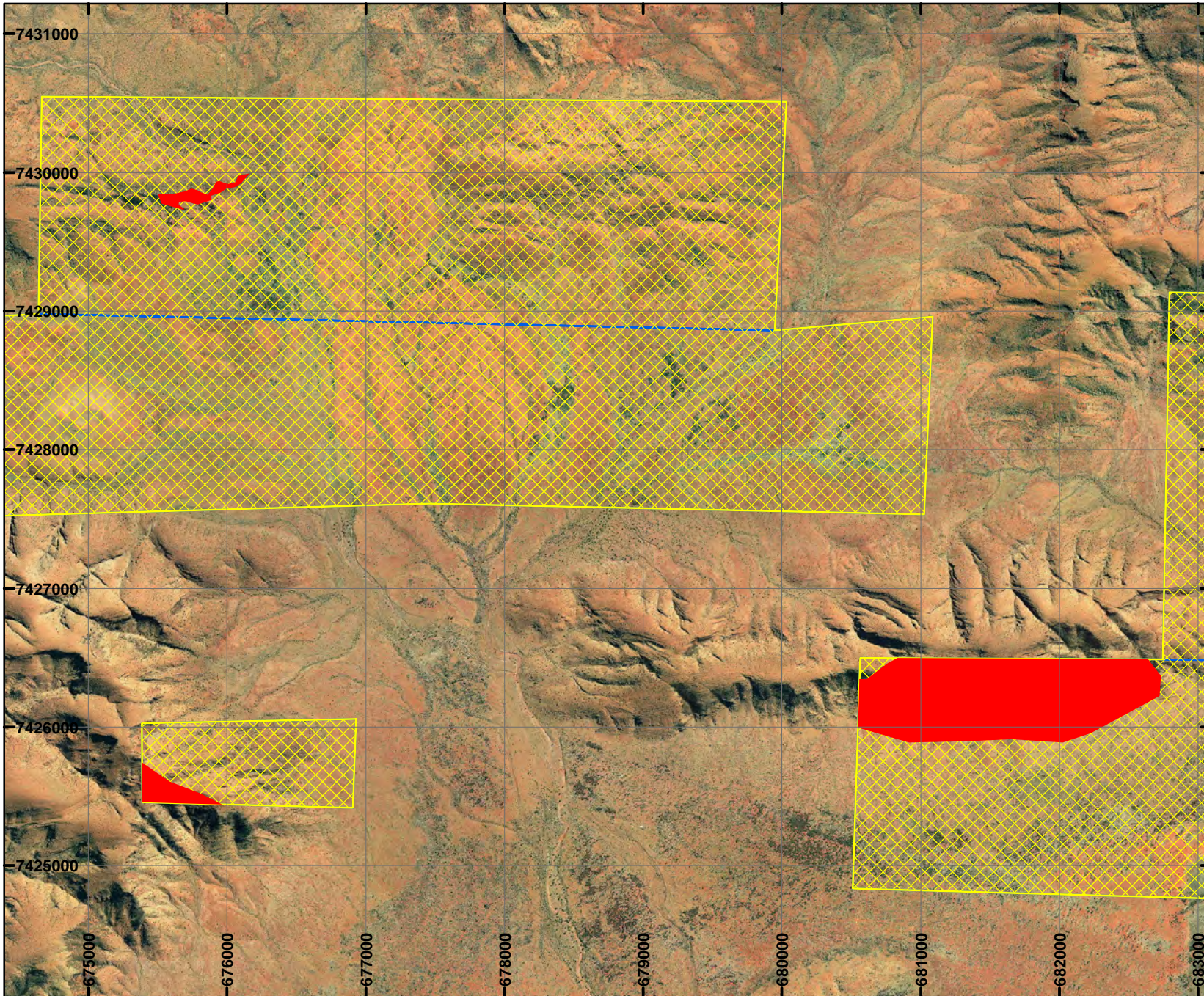
Marnie Leybourne

MARNIE LEYBOURNE Date 17 / 11 / 2016

Officer with delegated authority under Section 20 of the Environmental Protection Act 1986

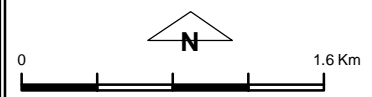
Information derived from this map should be confirmed with the data custodian acknowledged by the agency acronym in the legend.

PLAN 6545/2J



LEGEND

- Mining Tenements
- Clearing Instruments**
 - ▨ Areas Approved to Clear
 - Areas Subject to Conditions
 - Areas Subject to Conditions
 - Areas Subject to Conditions
 - Areas Subject to Conditions



Scale 1:40,000
(Approximate when reproduced at A4)

Geocentric Datum Australia 1994

Note: the data in this map have not been projected. This may result in geometric distortion or measurement inaccuracies.

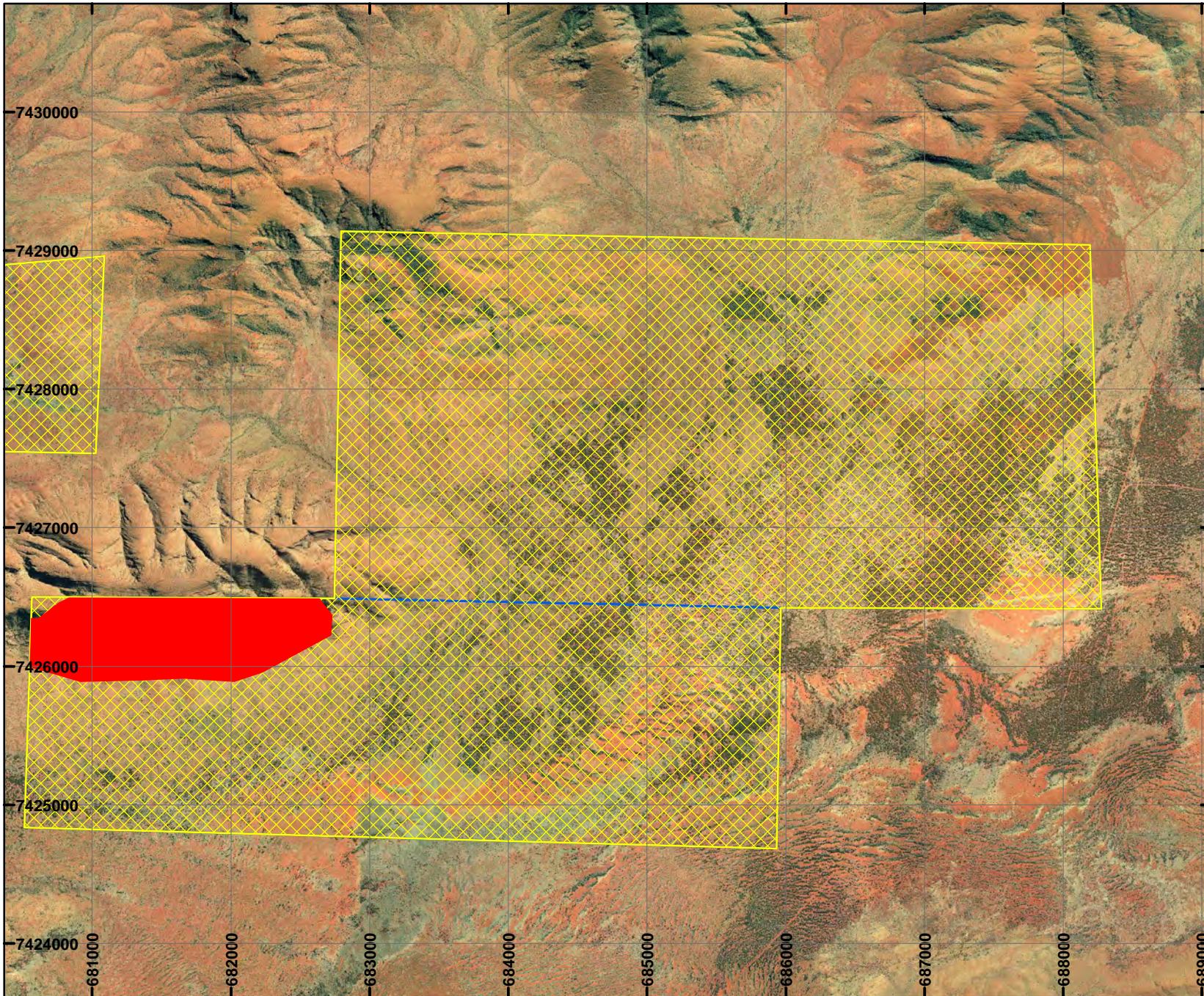
Marnie Lebourne

MARNIE LEBOURNE Date 17 / 11 / 2016

Officer with delegated authority under Section 20 of the Environmental Protection Act 1986

Information derived from this map should be confirmed with the data custodian acknowledged by the agency acronym in the legend.

PLAN 6545/2K

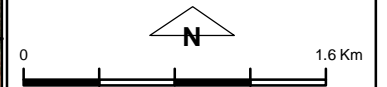


LEGEND

□ Mining Tenements

Clearing Instruments

- ▨ Areas Approved to Clear
- Areas Subject to Conditions
- Areas Subject to Conditions
- Areas Subject to Conditions
- Areas Subject to Conditions



Scale 1:40,000
(Approximate when reproduced at A4)

Geocentric Datum Australia 1994

Note: the data in this map have not been projected. This may result in geometric distortion or measurement inaccuracies.

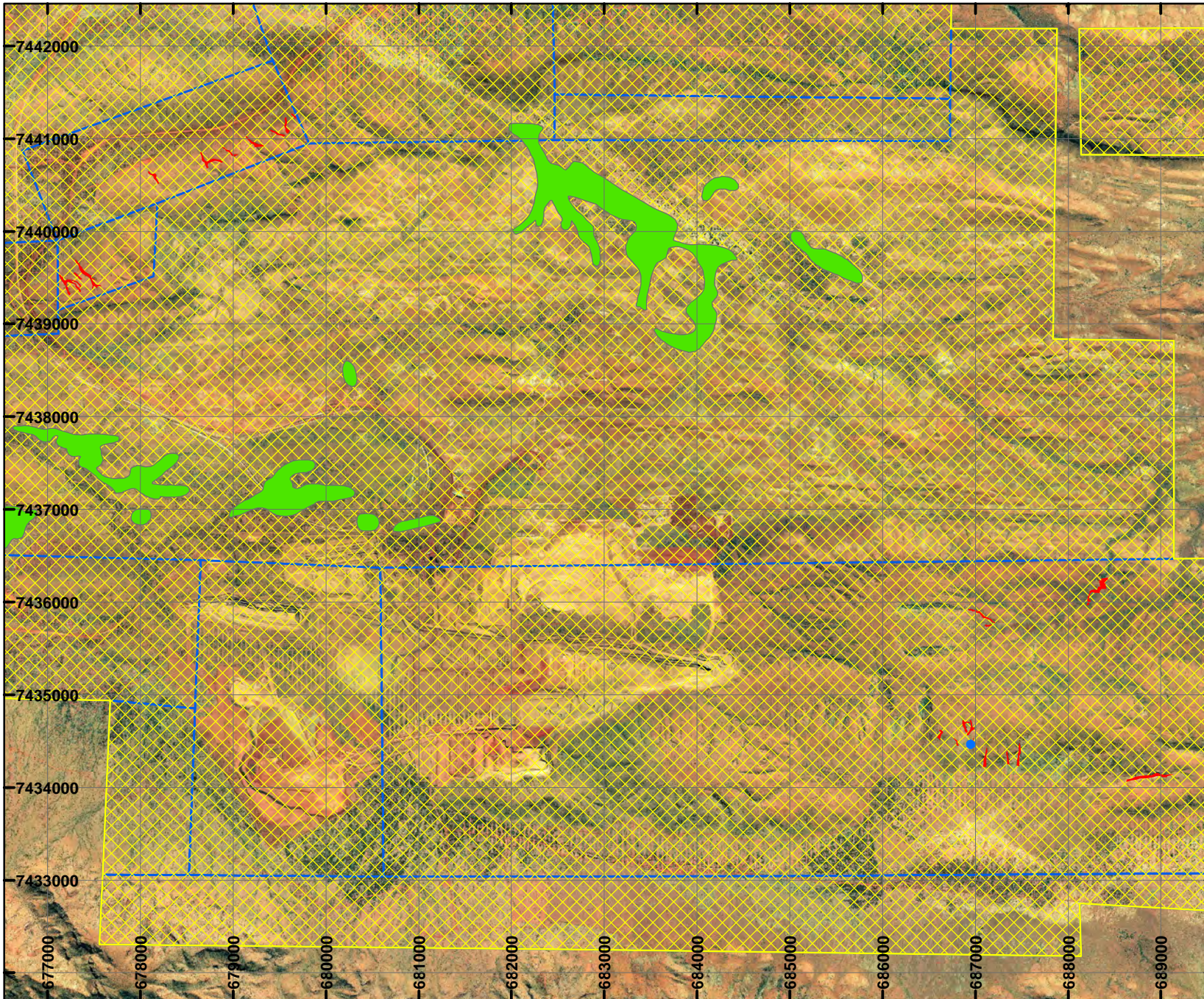
Marnie Leybourne

MARNIE LEYBOURNE Date 17 / 11 / 2016

Officer with delegated authority under Section 20 of the Environmental Protection Act 1986

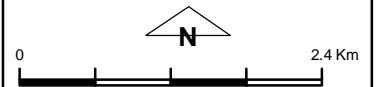
Information derived from this map should be confirmed with the data custodian acknowledged by the agency acronym in the legend.

PLAN 6545/2L



LEGEND

- Mining Tenements
- Clearing Instruments
 - ▭ Areas Approved to Clear
 - Areas Subject to Conditions
 - Areas Subject to Conditions
 - Areas Subject to Conditions
 - Areas Subject to Conditions



Scale 1:60,000
(Approximate when reproduced at A4)

Geocentric Datum Australia 1994

Note: the data in this map have not been projected. This may result in geometric distortion or measurement inaccuracies.

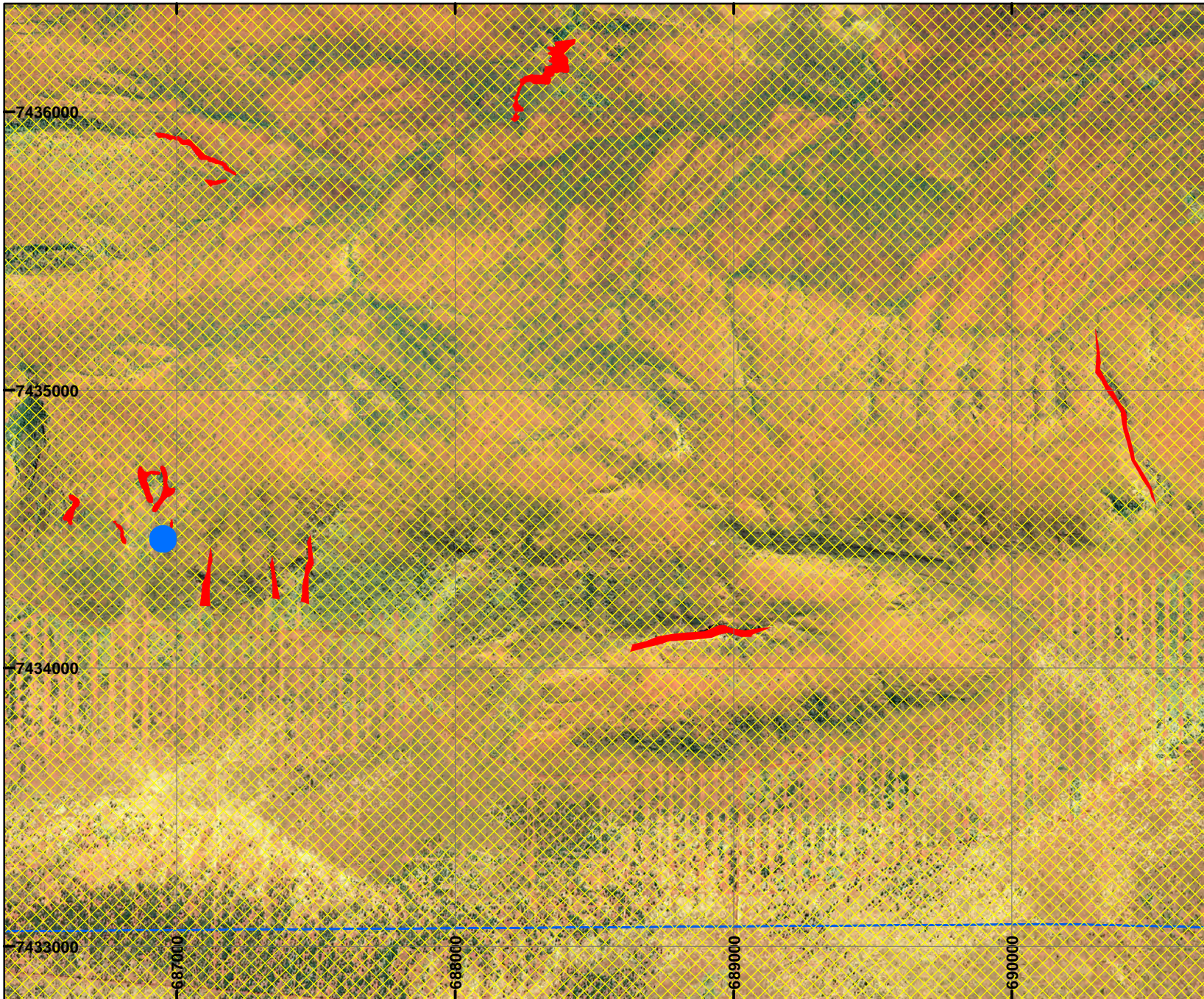
Marnie Leysbo

MARNIE LEYBOURNE Date 17 / 11 / 2016

Officer with delegated authority under Section 20 of the Environmental Protection Act 1986

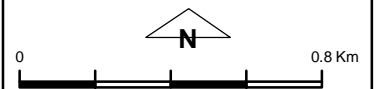
Information derived from this map should be confirmed with the data custodian acknowledged by the agency acronym in the legend.

PLAN 6545/2M



LEGEND

- Mining Tenements
- Clearing Instruments**
 - Areas Approved to Clear
 - Areas Subject to Conditions
 - Areas Subject to Conditions
 - Areas Subject to Conditions
 - Areas Subject to Conditions



Scale 1:20,000
(Approximate when reproduced at A4)

Geocentric Datum Australia 1994

Note: the data in this map have not been projected. This may result in geometric distortion or measurement inaccuracies.

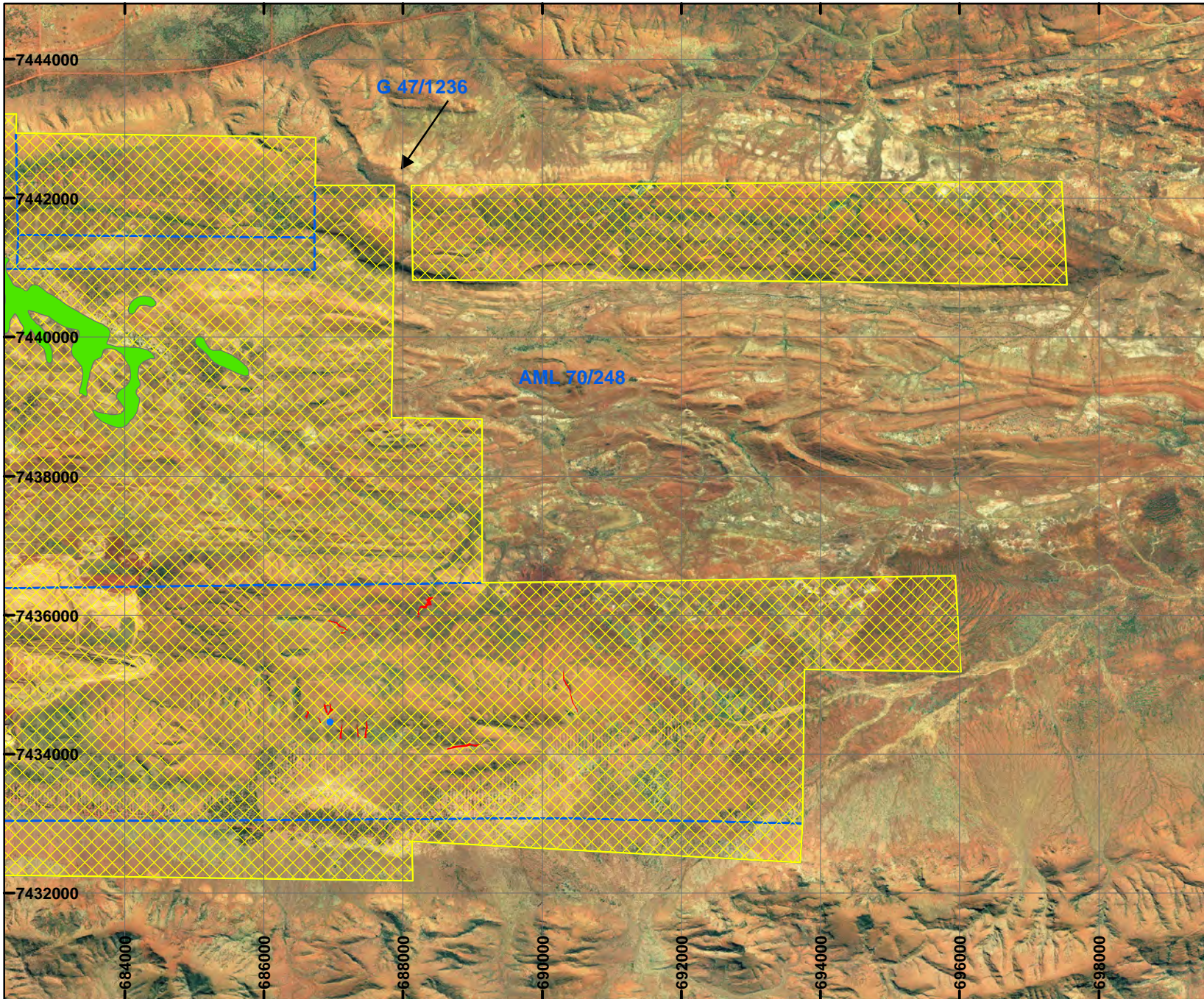
Marnie Leybourne

MARNIE LEYBOURNE Date 17 / 11 / 2016

Officer with delegated authority under Section 20 of the Environmental Protection Act 1986

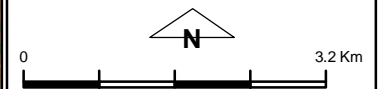
Information derived from this map should be confirmed with the data custodian acknowledged by the agency acronym in the legend.

PLAN 6545/2N



LEGEND

- Mining Tenements
- Clearing Instruments**
 - ▨ Areas Approved to Clear
 - Areas Subject to Conditions
 - Areas Subject to Conditions
 - Areas Subject to Conditions
 - Areas Subject to Conditions



Scale 1:80,000
(Approximate when reproduced at A4)

Geocentric Datum Australia 1994

Note: the data in this map have not been projected. This may result in geometric distortion or measurement inaccuracies.

Marnie Leypourne

MARNIE LEYBOURNE Date 17 / 11 / 2016

Officer with delegated authority under Section 20 of the Environmental Protection Act 1986

Information derived from this map should be confirmed with the data custodian acknowledged by the agency acronym in the legend.