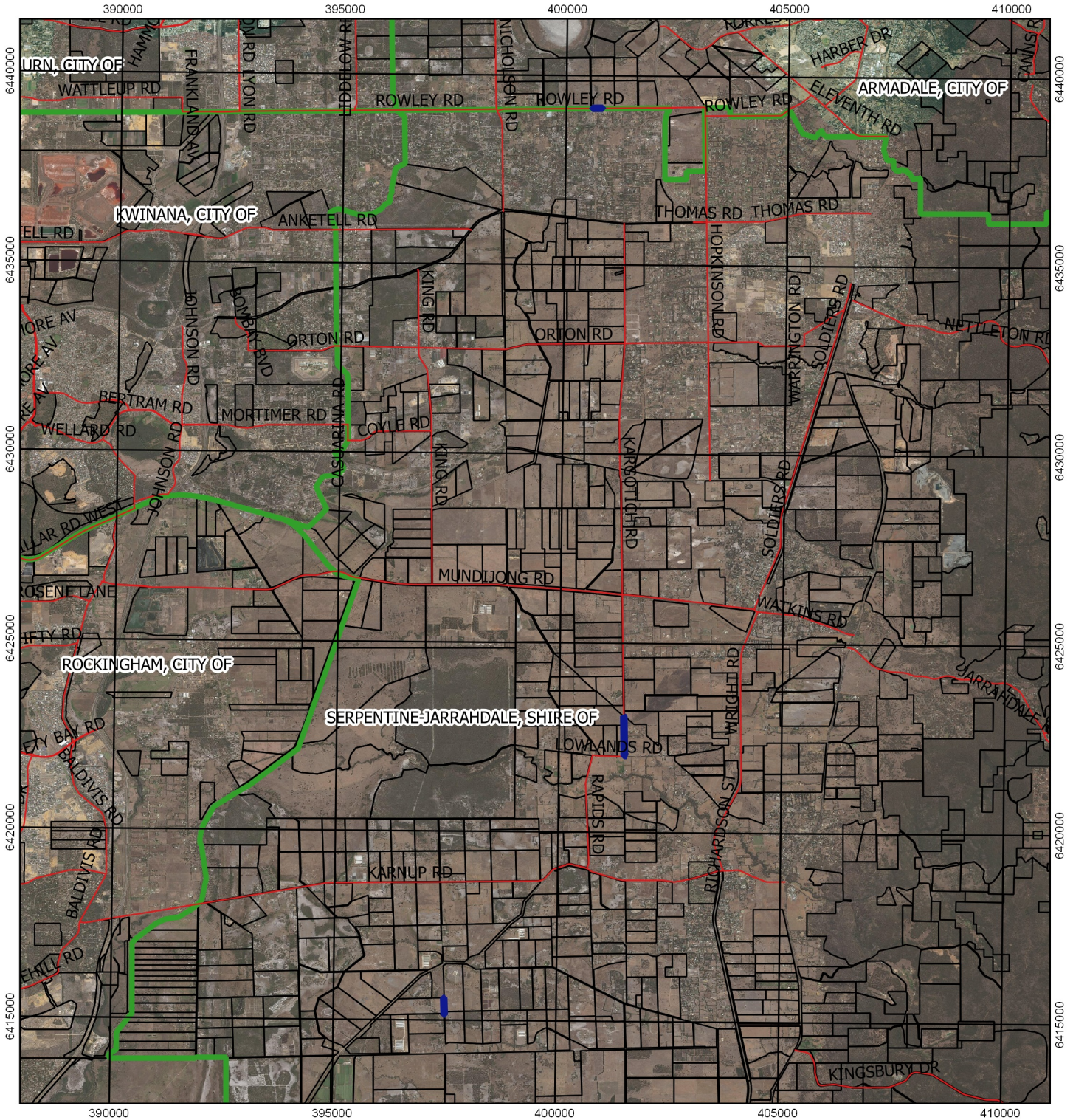






CPS 6546/1 - Context Map



Legend

-  Clearing Instruments Proposal
-  Roads
-  local_gov_authority
-  Cadastre
- World Imagery



1:95,000

MGA 94

Geocentric Datum of Australia 1994

.....Date.....
Simon Weighell

Officer with delegated authority under Section 20
of the Environmental Protection Act 1986



GOVERNMENT OF
WESTERN AUSTRALIA