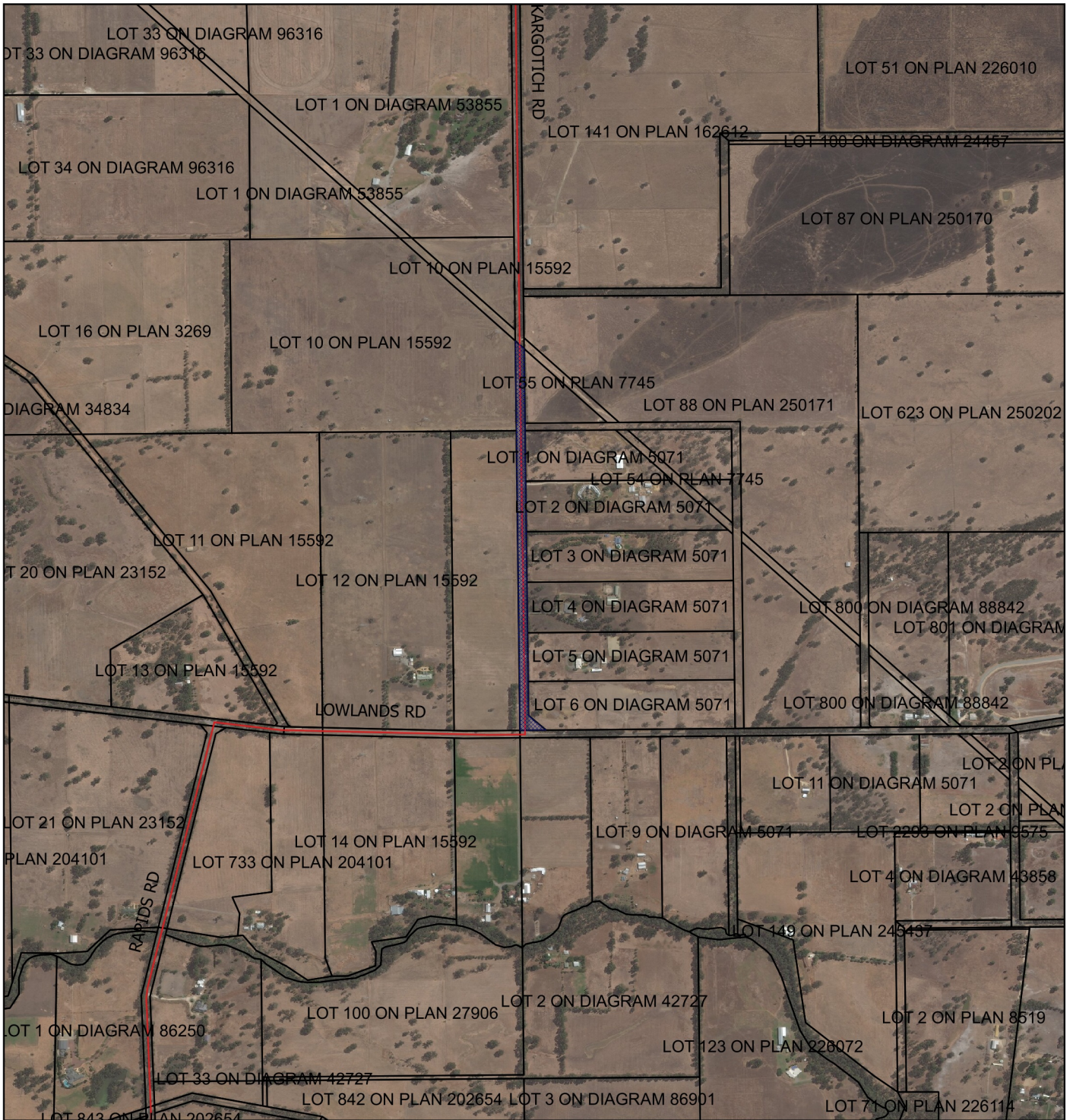



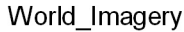


# CPS 6546/1 - Map B



## Legend

-  Clearing Instruments Proposal
-  Roads
-  Cadastre
-  World Imagery



1:10,000

MGA 94

Geocentric Datum of Australia 1994

.....Date.....  
Simon Weighell

Officer with delegated authority under Section 20  
of the Environmental Protection Act 1986

