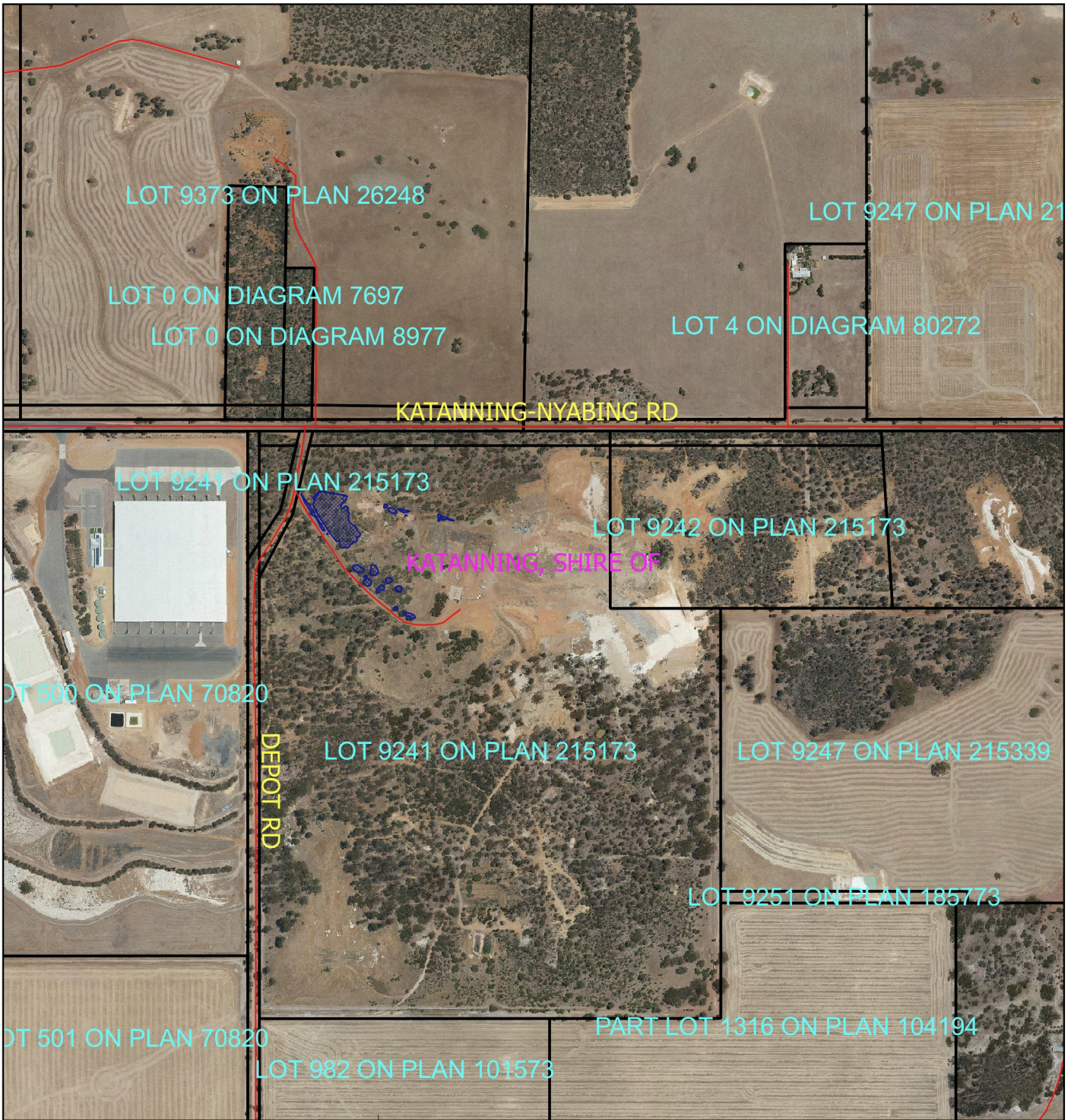


# CPS 6551/1 - Map

555000



555000

## Legend

-  Iga
-  Roads
-  Cadastre
- Virtual Mosaic
- 
-  Clearing Instruments Proposal



1:12,000

MGA 94

Geocentric Datum of Australia 1994

.....Date.....

Officer with delegated authority under Section 20  
of the Environmental Protection Act 1986



GOVERNMENT OF  
WESTERN AUSTRALIA