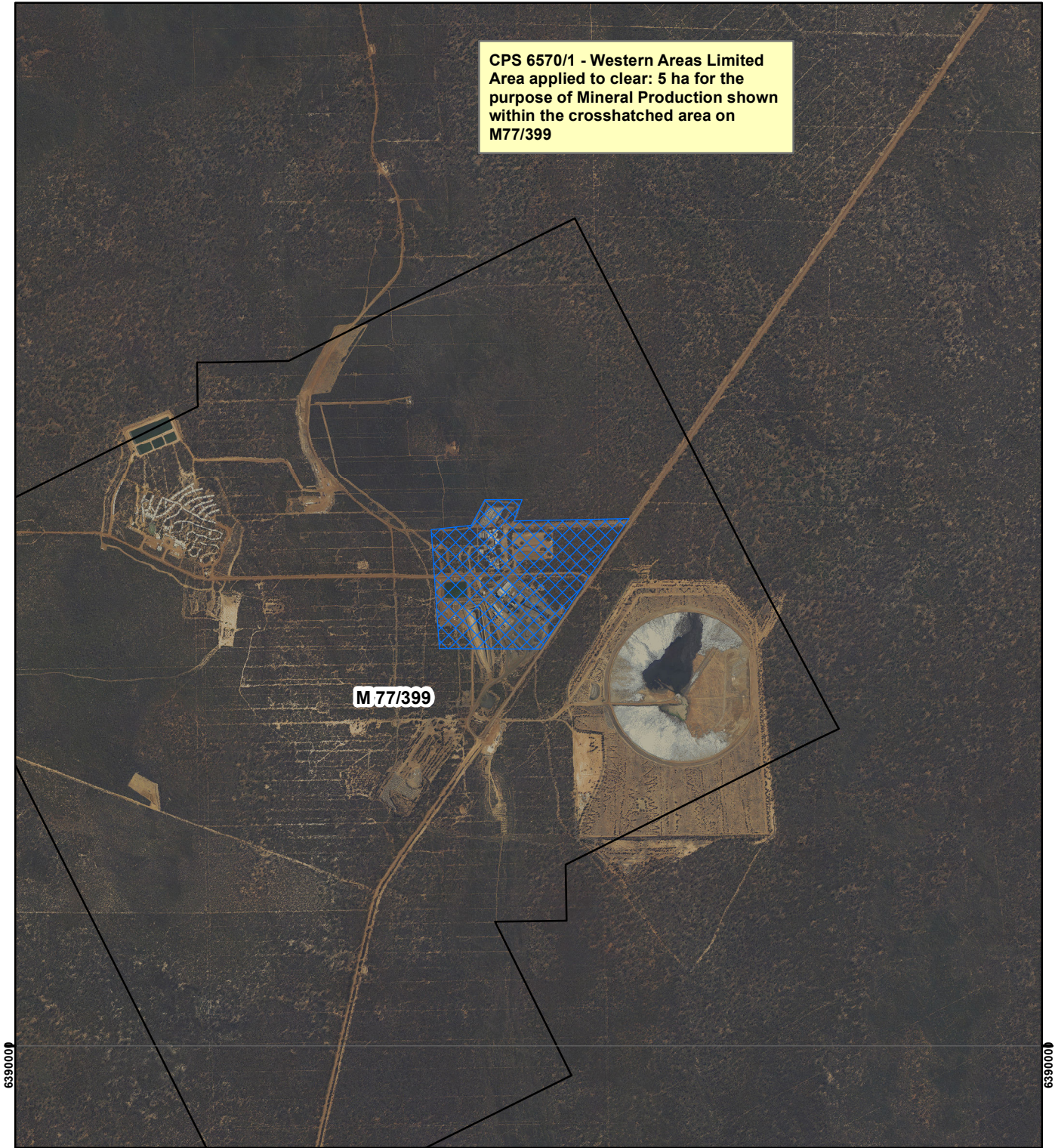



CPS 6570/1 - Western Areas Limited

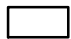
CPS 6570/1 - Western Areas Limited
Area applied to clear: 5 ha for the
purpose of Mineral Production shown
within the crosshatched area on
M77/399

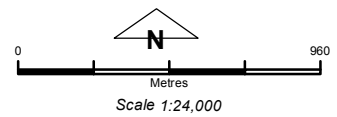


Legend

 Clearing Instruments

Mining Tenements

 Mining Tenements



Geocentric Datum Australia 1994

Note: the data in this map have not been projected. This may result in geometric distortion or measurement inaccuracies.

..... Date

Officer with delegated authority under Section 20 of the Environmental Protection Act 1986

Information derived from this map should be confirmed with the data custodian acknowledged by the agency acronym in the legend.

