

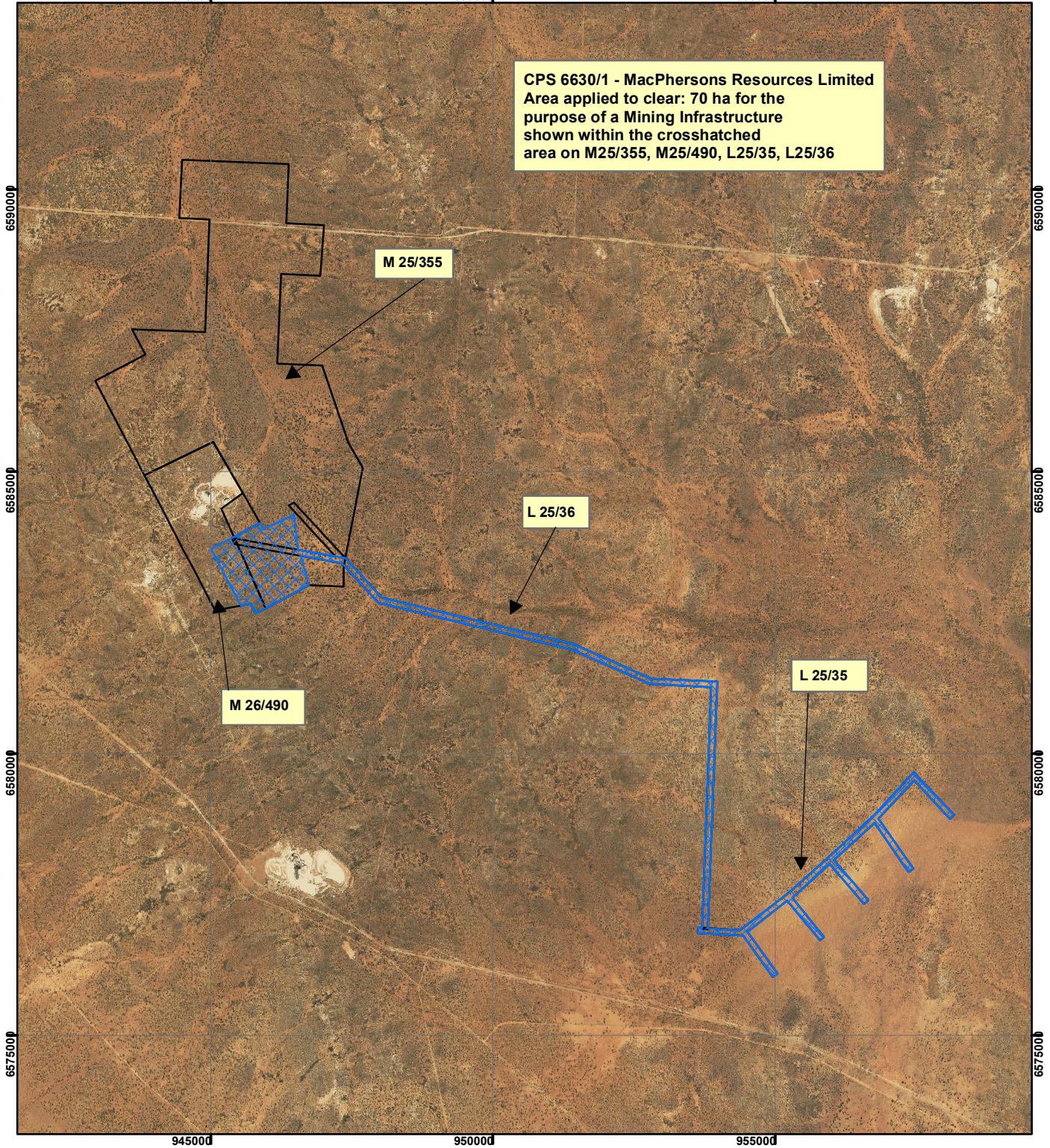
CPS 6630/1 - MacPhersons Resources Limited

94500g


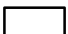
95000g

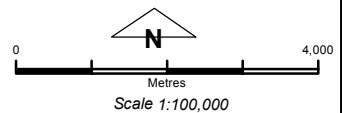
95500g

CPS 6630/1 - MacPhersons Resources Limited
 Area applied to clear: 70 ha for the
 purpose of a Mining Infrastructure
 shown within the crosshatched
 area on M25/355, M25/490, L25/35, L25/36



Legend

-  Clearing Instruments
- Mining Tenements**
-  Mining Tenements



Geocentric Datum Australia 1994
 Note: the data in this map have not been projected. This may result in geometric distortion or measurement inaccuracies.

..... Date

Officer with delegated authority under Section 20 of the Environmental Protection Act 1986

Information derived from this map should be confirmed with the data custodian acknowledged by the agency acronym in the legend.

