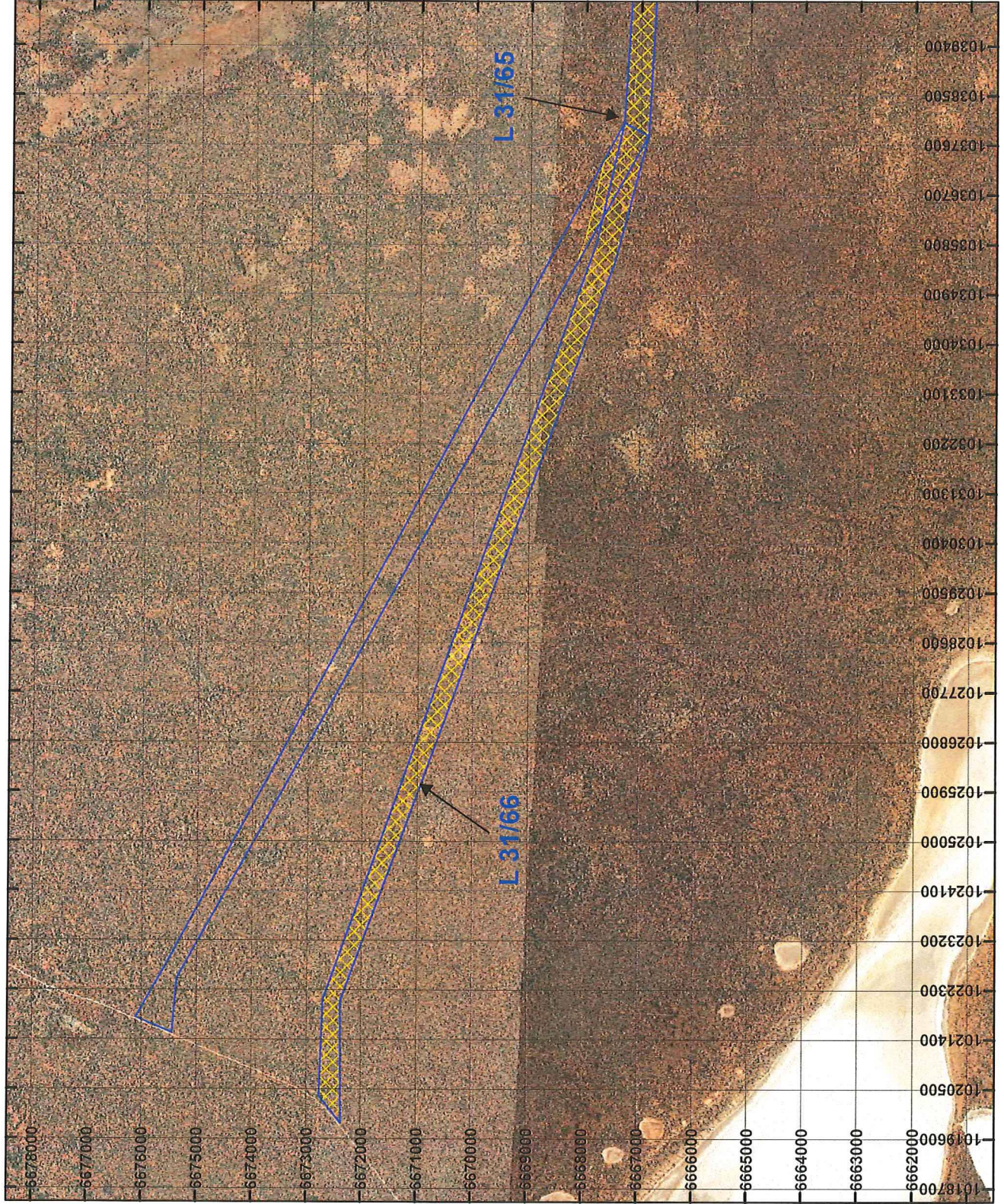


# PLAN 6634/1A



## LEGEND

- Mining Tenements
- Clearing Instruments
- Areas Approved to Clear
- Clearing Instruments\_1



0 4 Km

Scale 1:100,000  
(Approximate when reproduced at A4)

Geocentric Datum Australia 1994

Note: the data in this map have not been projected. This may result in geometric distortion or measurement inaccuracies.

*Virginia Simms*  
VIRGINIA SIMMS ..... Date 20/10/2015

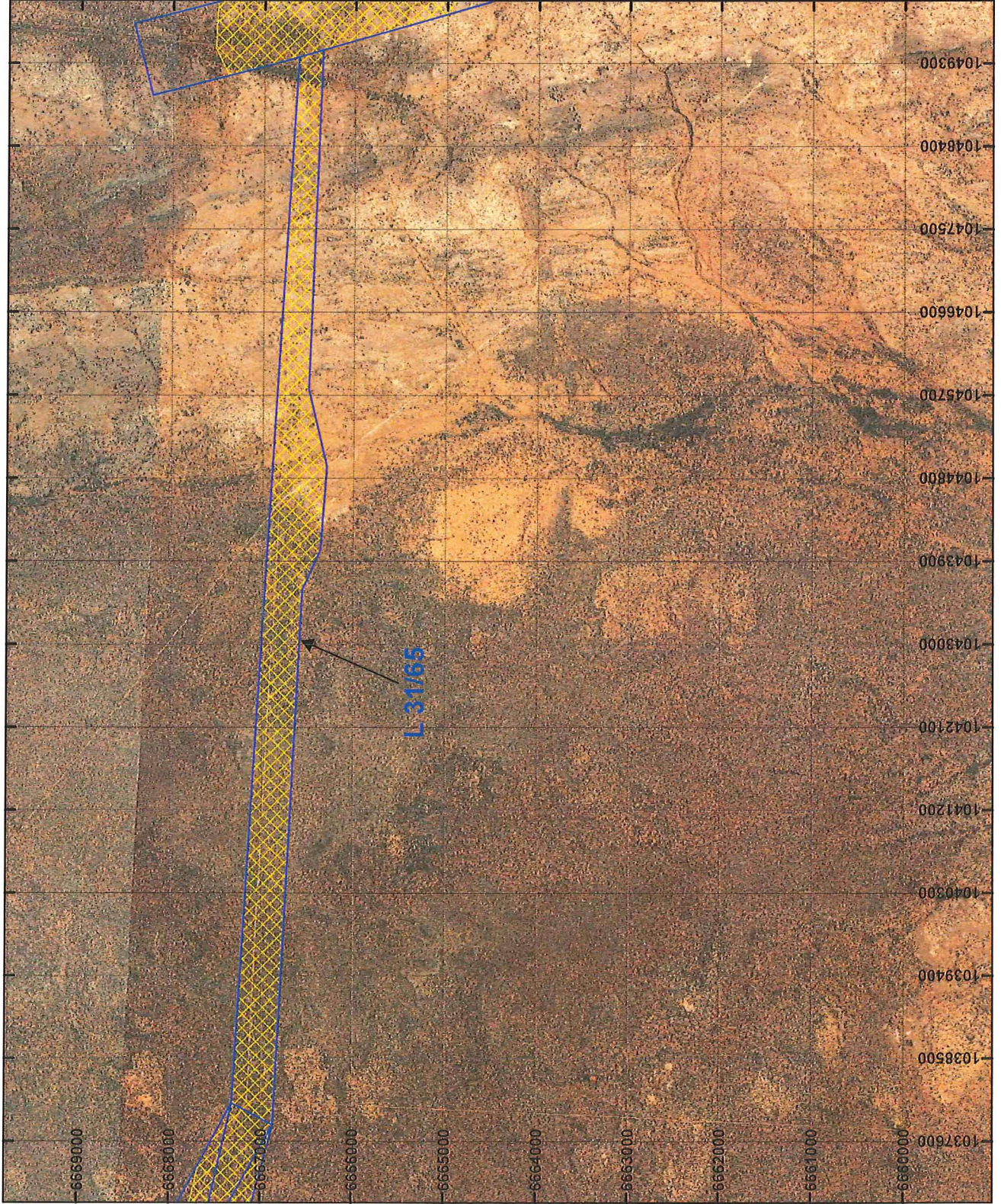
Officer with delegated authority under Section 20 of the Environmental Protection Act 1986

Information derived from this map should be confirmed with the data custodian acknowledged by the agency acronym in the legend.



WA Crown Copyright 2002

# PLAN 6634/1B



## LEGEND

- Mining Tenements
- Clearing Instruments
- Areas Approved to Clear
- Clearing Instruments\_1



0 2.4 Km

Scale 1:60,000

(Approximate when reproduced at A4)

Geocentric Datum Australia 1994

Note: the data in this map have not been projected. This may result in geometric distortion or measurement inaccuracies.

*Virginia Simms*  
VIRGINIA SIMMS ..... Date 20/12/2015

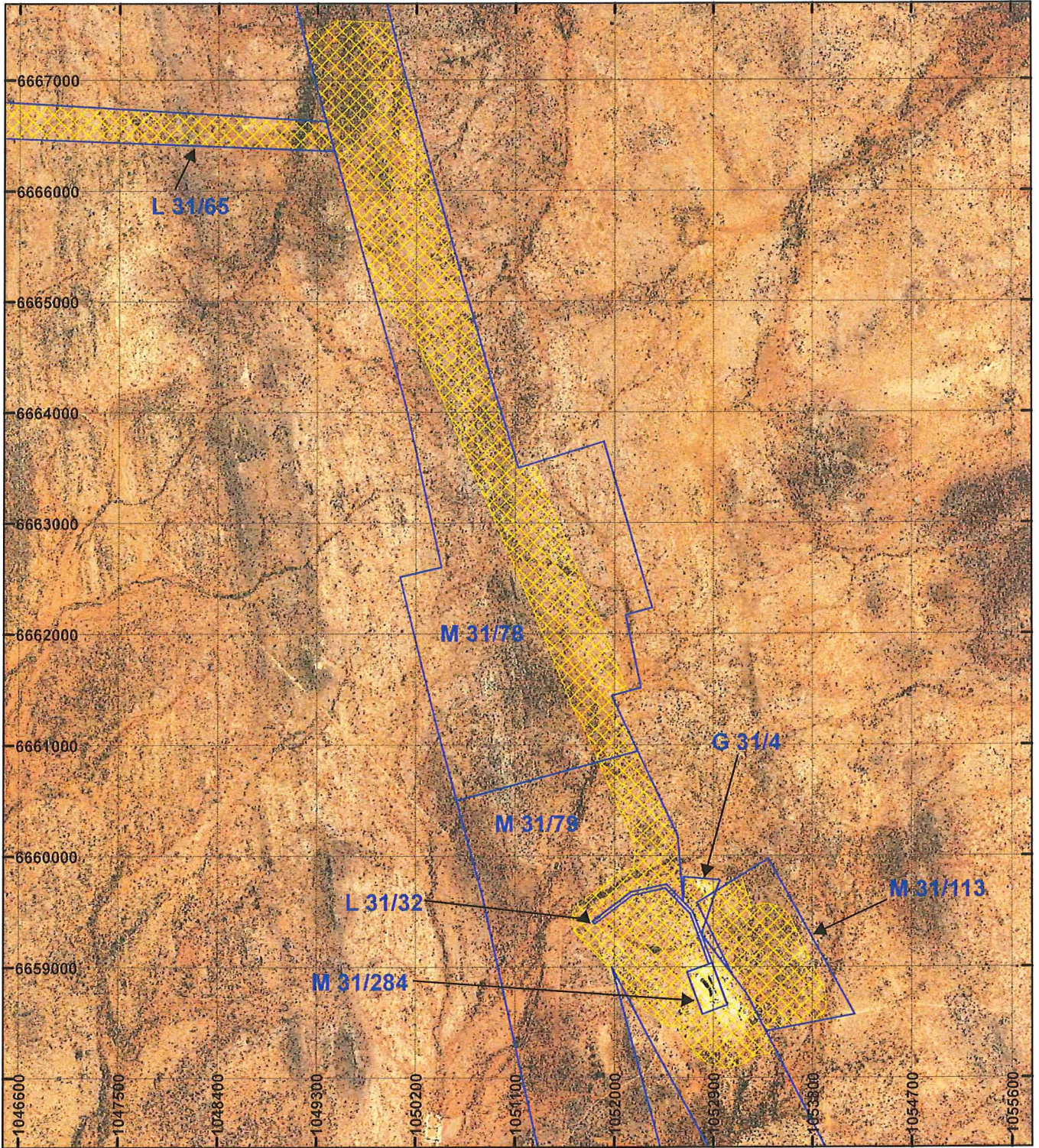
Officer with delegated authority under Section 20 of the Environmental Protection Act 1986

Information derived from this map should be confirmed with the data custodian acknowledged by the agency acronym in the legend.



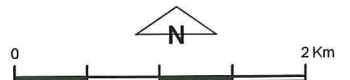
WA Crown Copyright 2002

# PLAN 6634/1C



## LEGEND

- Mining Tenements
- Clearing Instruments
- Areas Approved to Clear



Scale 1:50,000  
(Approximate when reproduced at A4)

Geocentric Datum Australia 1994

Note: the data in this map have not been projected. This may result in geometric distortion or measurement inaccuracies.

*Virginia Simms* ..... Date *20/8/2015*  
VIRGINIA SIMMS

Officer with delegated authority under Section 20 of the Environmental Protection Act 1986

Information derived from this map should be confirmed with the data custodian acknowledged by the agency acronym in the legend.

