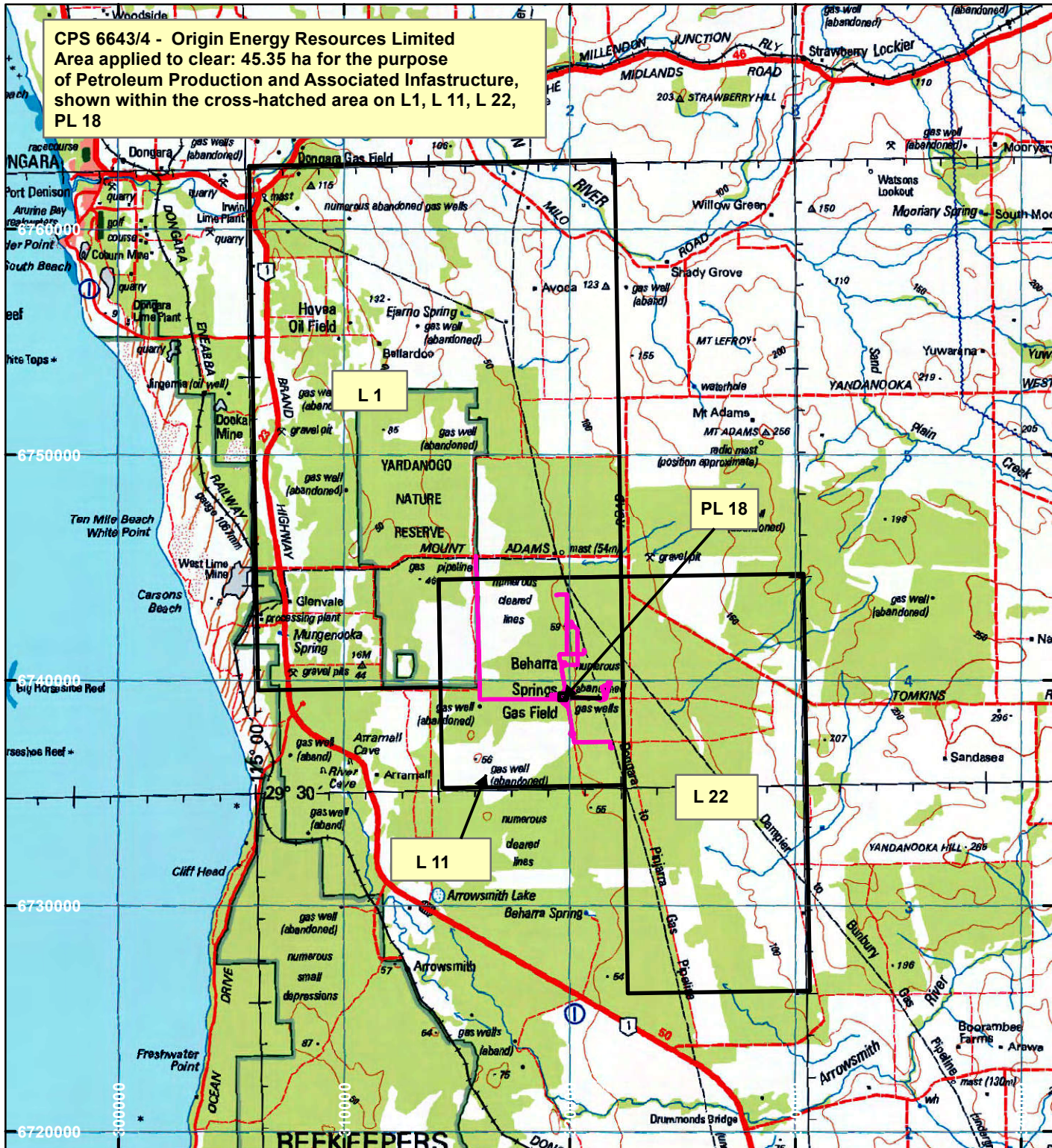


# CPS 6643/4 - Origin Energy Resources Limited

CPS 6643/4 - Origin Energy Resources Limited  
 Area applied to clear: 45.35 ha for the purpose  
 of Petroleum Production and Associated Infrastructure,  
 shown within the cross-hatched area on L1, L 11, L 22,  
 PL 18



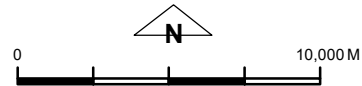
## LEGEND



Clearing Instruments



Mining Tenements



Scale 1:250,000

(Approximate when reproduced at A4)

Geocentric Datum Australia 1994

Note: the data in this map have not been projected. This may result in geometric distortion or measurement inaccuracies.

..... Date .....

Officer with delegated authority under Section 20 of  
 the Environmental Protection Act 1986

Information derived from this map should be  
 confirmed with the data custodian acknowledged  
 by the agency acronym in the legend.

