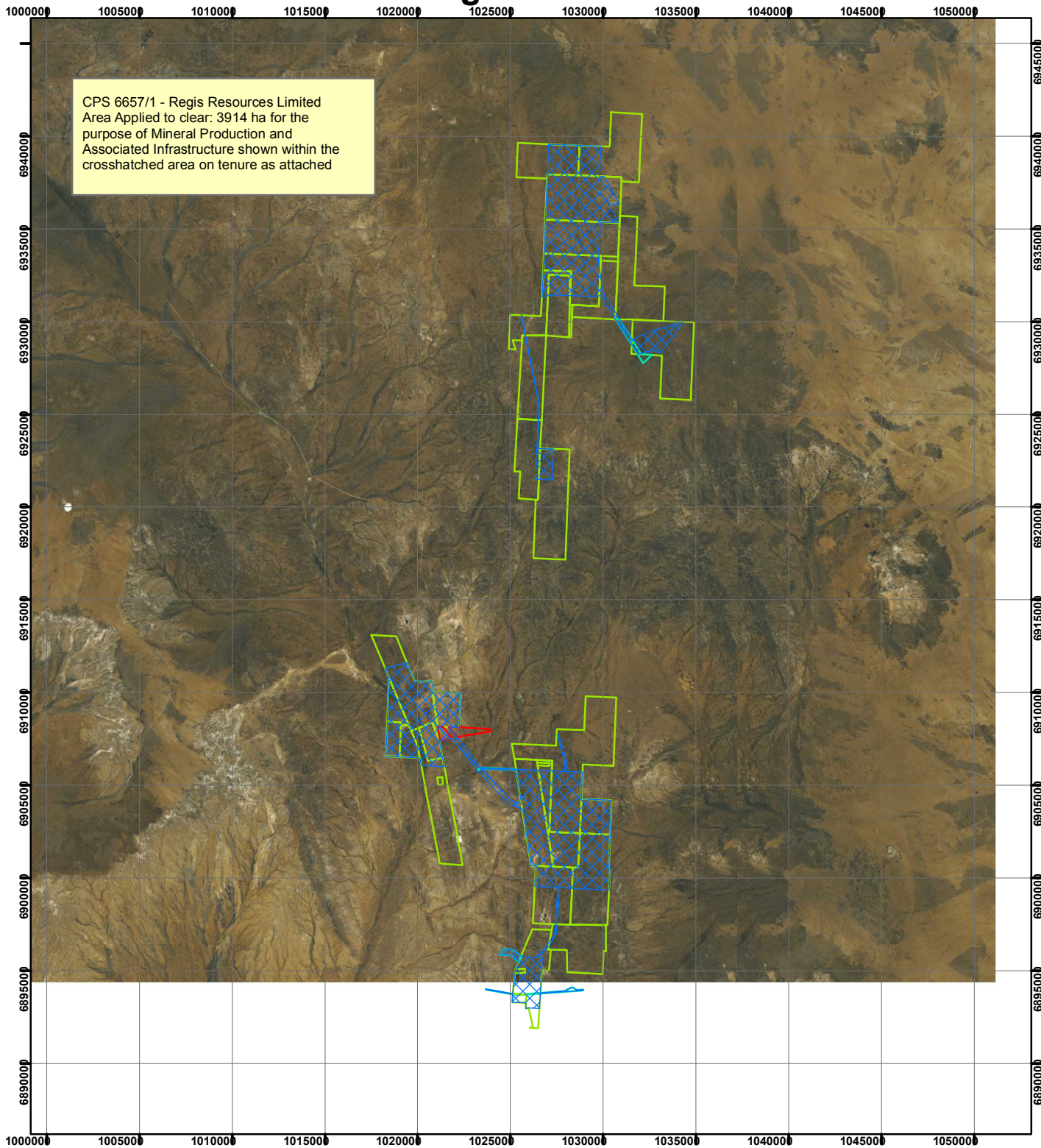


CPS 6657/1 - Regis Resources Limited



CPS 6657/1 - Regis Resources Limited
 Area Applied to clear: 3914 ha for the
 purpose of Mineral Production and
 Associated Infrastructure shown within the
 crosshatched area on tenure as attached

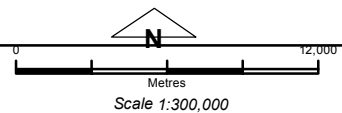
Legend

Clearing Instruments

Mining Tenements

PMT, RENO

- M 3615833
- M 3615834
- M 3615835
- M 3615836
- M 3615837
- M 3615838
- M 3615839
- M 3615840
- M 3615841
- M 3615842
- M 3615843
- M 3615844
- M 3615845
- M 3615846
- M 3615847
- M 3615848
- M 3615849
- M 3615850
- M 3615851
- M 3615852
- M 3615853
- M 3615854
- M 3615855
- M 3615856
- M 3615857
- M 3615858
- M 3615859
- M 3615860
- M 3615861
- M 3615862
- M 3615863
- M 3615864
- M 3615865
- M 3615866
- M 3615867
- M 3615868
- M 3615869
- M 3615870
- M 3615871
- M 3615872
- M 3615873
- M 3615874
- M 3615875
- M 3615876
- M 3615877
- M 3615878
- M 3615879
- M 3615880
- M 3615881
- M 3615882
- M 3615883
- M 3615884
- M 3615885
- M 3615886
- M 3615887
- M 3615888
- M 3615889
- M 3615890
- M 3615891
- M 3615892
- M 3615893
- M 3615894
- M 3615895
- M 3615896
- M 3615897
- M 3615898
- M 3615899
- M 3615900
- M 3615901
- M 3615902
- M 3615903
- M 3615904
- M 3615905
- M 3615906
- M 3615907
- M 3615908
- M 3615909
- M 3615910
- M 3615911
- M 3615912
- M 3615913
- M 3615914
- M 3615915
- M 3615916
- M 3615917
- M 3615918
- M 3615919
- M 3615920
- M 3615921
- M 3615922
- M 3615923
- M 3615924
- M 3615925
- M 3615926
- M 3615927
- M 3615928
- M 3615929
- M 3615930
- M 3615931
- M 3615932
- M 3615933
- M 3615934
- M 3615935
- M 3615936
- M 3615937
- M 3615938
- M 3615939
- M 3615940
- M 3615941
- M 3615942
- M 3615943
- M 3615944
- M 3615945
- M 3615946
- M 3615947
- M 3615948
- M 3615949
- M 3615950
- M 3615951
- M 3615952
- M 3615953
- M 3615954
- M 3615955
- M 3615956
- M 3615957
- M 3615958
- M 3615959
- M 3615960
- M 3615961
- M 3615962
- M 3615963
- M 3615964
- M 3615965
- M 3615966
- M 3615967
- M 3615968
- M 3615969
- M 3615970
- M 3615971
- M 3615972
- M 3615973
- M 3615974
- M 3615975
- M 3615976
- M 3615977
- M 3615978
- M 3615979
- M 3615980
- M 3615981
- M 3615982
- M 3615983
- M 3615984
- M 3615985
- M 3615986
- M 3615987
- M 3615988
- M 3615989
- M 3615990
- M 3615991
- M 3615992
- M 3615993
- M 3615994
- M 3615995
- M 3615996
- M 3615997
- M 3615998
- M 3615999
- M 3616000



Geocentric Datum Australia 1994
 Note: the data in this map have not been
 projected. This may result in geometric
 distortion or measurement inaccuracies.

..... Date

Officer with delegated authority under Section 20 of
 the Environmental Protection Act 1986

Information derived from this map should be
 confirmed with the data custodian acknowledged
 by the agency acronym in the legend.

