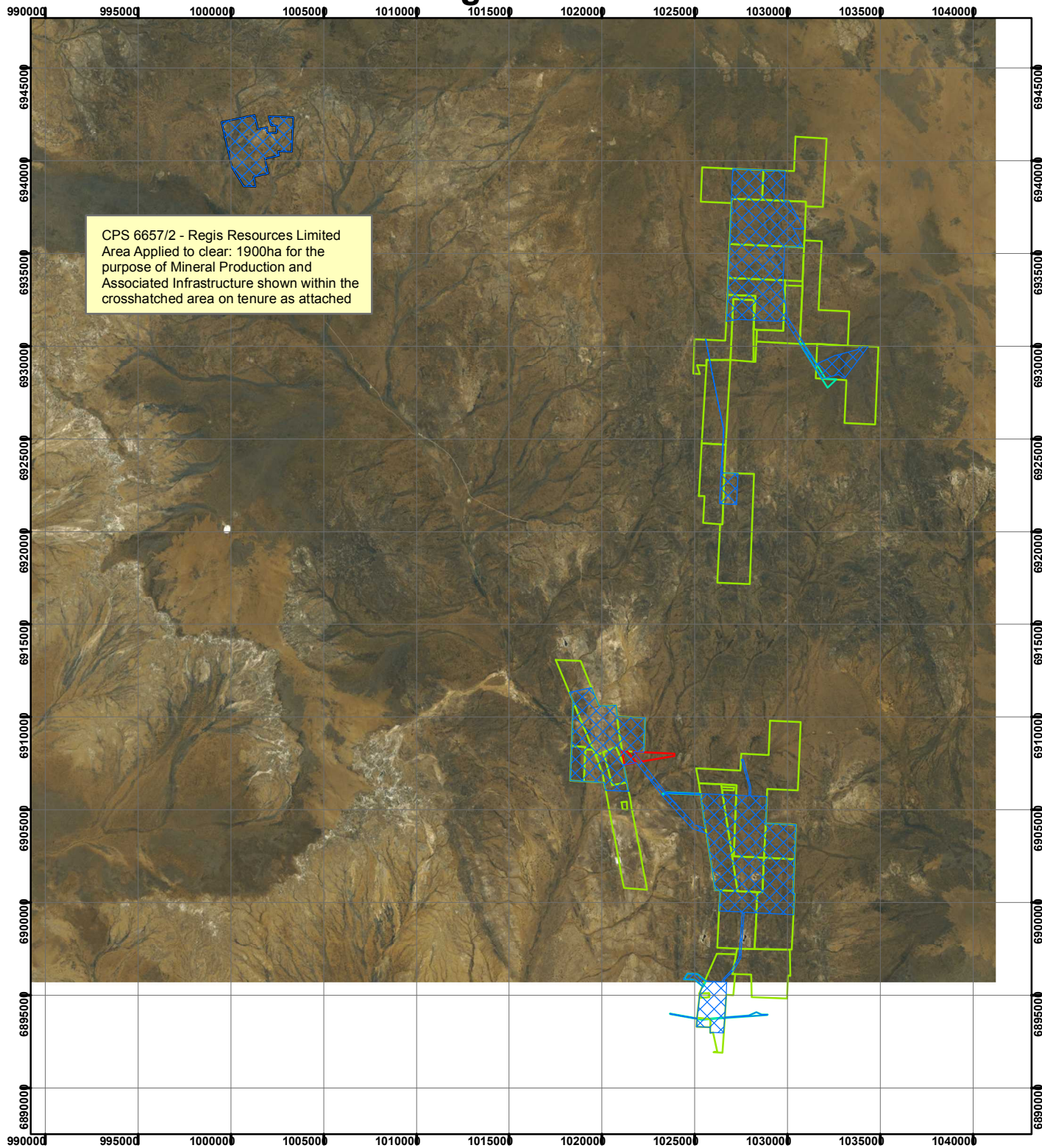
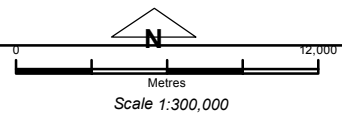


# CPS 6657/2 - Regis Resources Limited



CPS 6657/2 - Regis Resources Limited  
 Area Applied to clear: 1900ha for the  
 purpose of Mineral Production and  
 Associated Infrastructure shown within the  
 crosshatched area on tenure as attached

- Legend**
- Clearing Instruments
  - Mining Tenements**
- | FMT_TENID |
|-----------|
| M 381288  |
| M 381283  |
| M 382844  |
| M 382843  |
| M 382842  |
| M 382838  |
| M 382802  |
| M 382809  |
| M 382803  |
| M 382808  |
| M 382807  |
| M 382804  |
| M 382802  |
| M 382803  |
| M 382804  |
| M 382805  |
| M 382806  |
| M 382807  |
| M 382808  |
| M 382809  |
| M 382810  |
| M 382811  |
| M 382812  |
| M 382813  |
| M 382814  |
| M 382815  |
| M 382816  |
| M 382817  |
| M 382818  |
| M 382819  |
| M 382820  |
| M 382821  |
| M 382822  |
| M 382823  |
| M 382824  |
| M 382825  |
| M 382826  |
| M 382827  |
| M 382828  |
| M 382829  |
| M 382830  |
| M 382831  |
| M 382832  |
| M 382833  |
| M 382834  |
| M 382835  |
| M 382836  |
| M 382837  |
| M 382838  |
| M 382839  |
| M 382840  |
| M 382841  |
| M 382842  |
| M 382843  |
| M 382844  |
| M 382845  |
| M 382846  |
| M 382847  |
| M 382848  |
| M 382849  |
| M 382850  |
| M 382851  |
| M 382852  |
| M 382853  |
| M 382854  |
| M 382855  |
| M 382856  |
| M 382857  |
| M 382858  |
| M 382859  |
| M 382860  |
| M 382861  |
| M 382862  |
| M 382863  |
| M 382864  |
| M 382865  |
| M 382866  |
| M 382867  |
| M 382868  |
| M 382869  |
| M 382870  |
| M 382871  |
| M 382872  |
| M 382873  |
| M 382874  |
| M 382875  |
| M 382876  |
| M 382877  |
| M 382878  |
| M 382879  |
| M 382880  |
| M 382881  |
| M 382882  |
| M 382883  |
| M 382884  |
| M 382885  |
| M 382886  |
| M 382887  |
| M 382888  |
| M 382889  |
| M 382890  |
| M 382891  |
| M 382892  |
| M 382893  |
| M 382894  |
| M 382895  |
| M 382896  |
| M 382897  |
| M 382898  |
| M 382899  |
| M 382900  |
| M 382901  |
| M 382902  |
| M 382903  |
| M 382904  |
| M 382905  |
| M 382906  |
| M 382907  |
| M 382908  |
| M 382909  |
| M 382910  |
| M 382911  |
| M 382912  |
| M 382913  |
| M 382914  |
| M 382915  |
| M 382916  |
| M 382917  |
| M 382918  |
| M 382919  |
| M 382920  |
| M 382921  |
| M 382922  |
| M 382923  |
| M 382924  |
| M 382925  |
| M 382926  |
| M 382927  |
| M 382928  |
| M 382929  |
| M 382930  |
| M 382931  |
| M 382932  |
| M 382933  |
| M 382934  |
| M 382935  |
| M 382936  |
| M 382937  |
| M 382938  |
| M 382939  |
| M 382940  |
| M 382941  |
| M 382942  |
| M 382943  |
| M 382944  |
| M 382945  |
| M 382946  |
| M 382947  |
| M 382948  |
| M 382949  |
| M 382950  |
| M 382951  |
| M 382952  |
| M 382953  |
| M 382954  |
| M 382955  |
| M 382956  |
| M 382957  |
| M 382958  |
| M 382959  |
| M 382960  |
| M 382961  |
| M 382962  |
| M 382963  |
| M 382964  |
| M 382965  |
| M 382966  |
| M 382967  |
| M 382968  |
| M 382969  |
| M 382970  |
| M 382971  |
| M 382972  |
| M 382973  |
| M 382974  |
| M 382975  |
| M 382976  |
| M 382977  |
| M 382978  |
| M 382979  |
| M 382980  |
| M 382981  |
| M 382982  |
| M 382983  |
| M 382984  |
| M 382985  |
| M 382986  |
| M 382987  |
| M 382988  |
| M 382989  |
| M 382990  |
| M 382991  |
| M 382992  |
| M 382993  |
| M 382994  |
| M 382995  |
| M 382996  |
| M 382997  |
| M 382998  |
| M 382999  |
| M 383000  |



*Geocentric Datum Australia 1994*  
*Note: the data in this map have not been projected. This may result in geometric distortion or measurement inaccuracies.*

Date .....

Officer with delegated authority under Section 20 of the Environmental Protection Act 1986

Information derived from this map should be confirmed with the data custodian acknowledged by the agency acronym in the legend.

