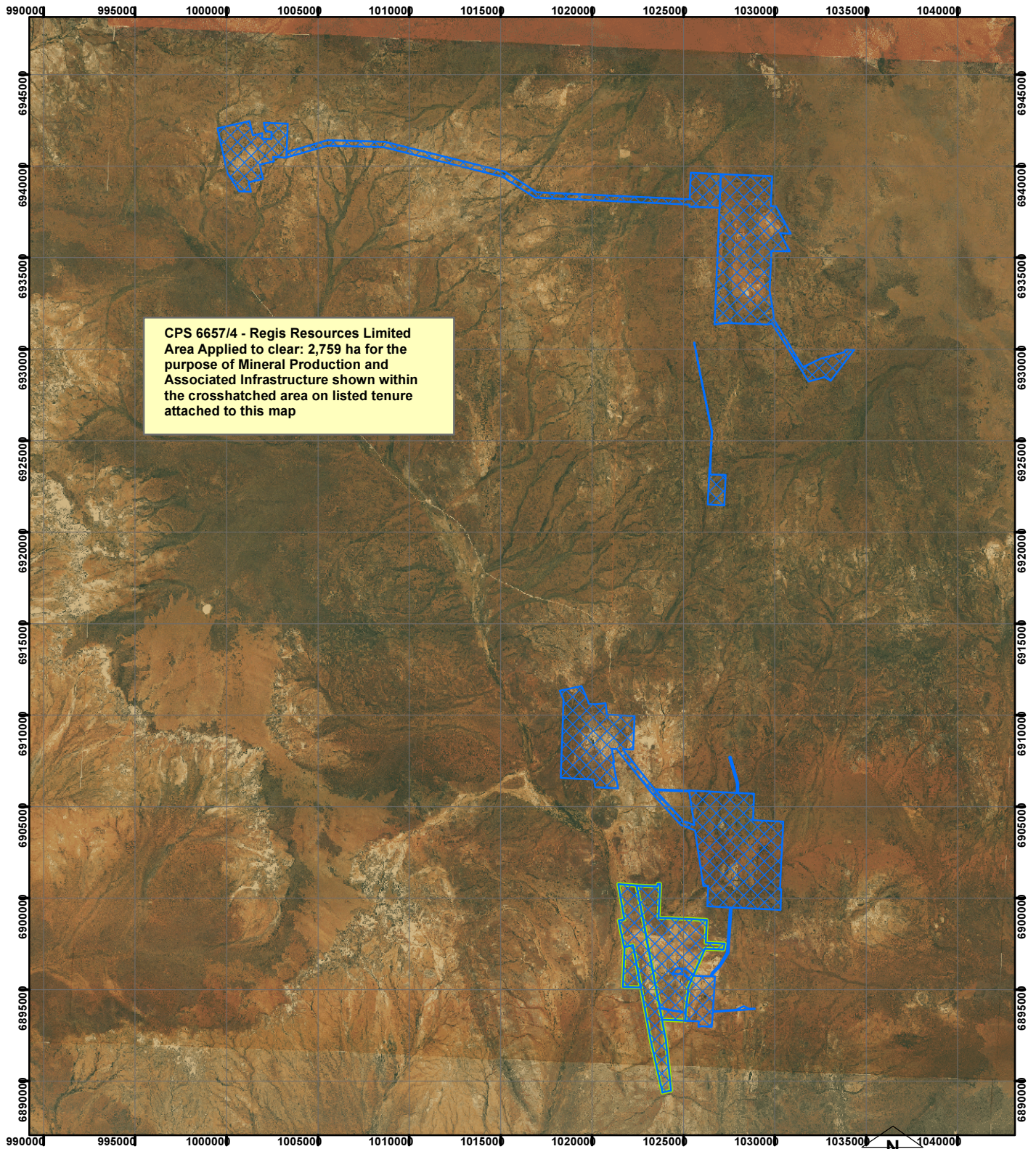


# CPS 6657/4 - Regis Resources Limited

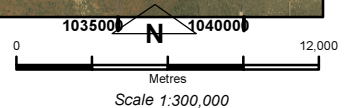


CPS 6657/4 - Regis Resources Limited  
 Area Applied to clear: 2,759 ha for the  
 purpose of Mineral Production and  
 Associated Infrastructure shown within  
 the crosshatched area on listed tenure  
 attached to this map

## LEGEND

- Mining Tenements
- Clearing Instruments
- Areas Applied to Clear

Seamless Mosaic



Geocentric Datum Australia 1994

*Note: the data in this map have not been projected. This may result in geometric distortion or measurement inaccuracies.*

..... Date .....

Officer with delegated authority under Section 20 of  
 the Environmental Protection Act 1986

Information derived from this map should be  
 confirmed with the data custodian acknowledged  
 by the agency acronym in the legend.

