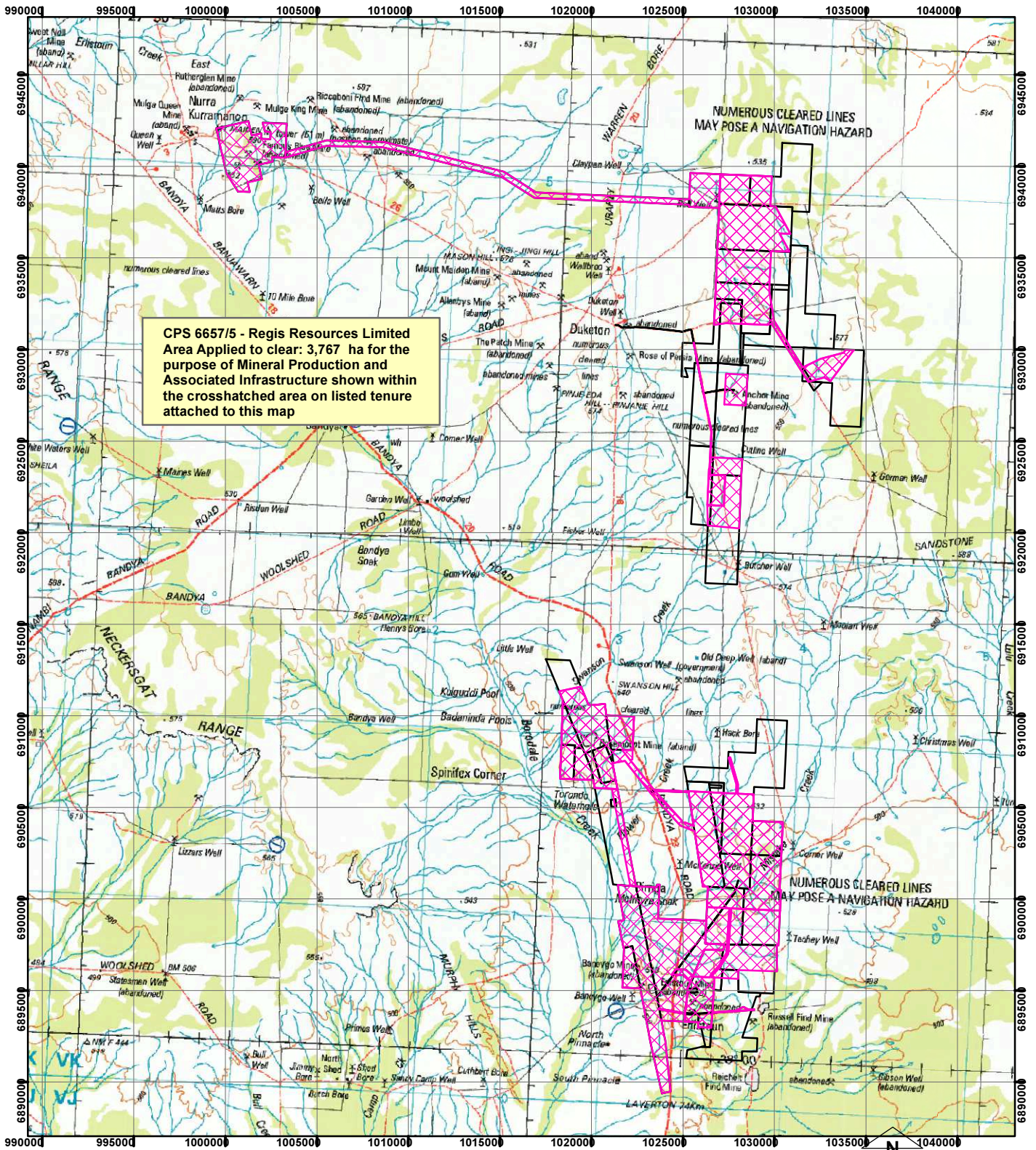


CPS 6657/5 - Regis Resources Limited



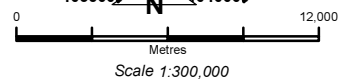
CPS 6657/5 - Regis Resources Limited Area Applied to clear: 3,767 ha for the purpose of Mineral Production and Associated Infrastructure shown within the crosshatched area on listed tenure attached to this map

NUMEROUS CLEARED LINES MAY POSE A NAVIGATION HAZARD

NUMEROUS CLEARED LINES MAY POSE A NAVIGATION HAZARD

- LEGEND**
- Mining Tenements
 - Clearing Instruments
 - Areas Applied to Clear

Seamless Mosaic



Geocentric Datum Australia 1994

Note: the data in this map have not been projected. This may result in geometric distortion or measurement inaccuracies.

..... Date

Officer with delegated authority under Section 20 of the Environmental Protection Act 1986

Information derived from this map should be confirmed with the data custodian acknowledged by the agency acronym in the legend.

