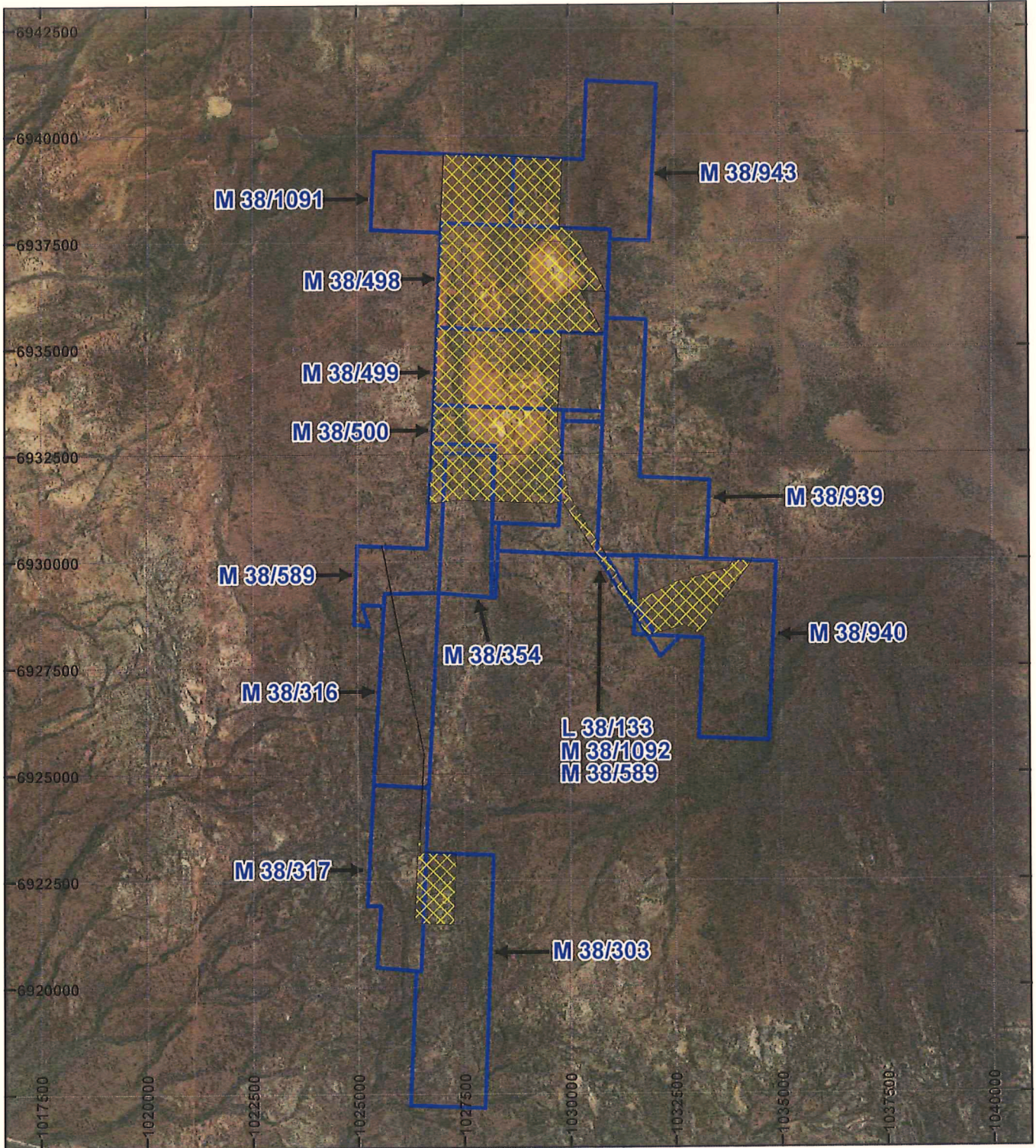


# PLAN 6657/1A



## LEGEND

- Mining Tenements
- Clearing Instruments
- Areas Approved to Clear
- Cosmo Newbery 3442 Apr 2011 Mosaic
- Duketon 3342 Apr 2011 Mosaic



Scale 1:130,000  
(Approximate when reproduced at A4)

Geocentric Datum Australia 1994

Note: the data in this map have not been projected. This may result in geometric distortion or measurement inaccuracies.

*M. Ley* Date 15/10/15  
MARNIE LEYBOURNE

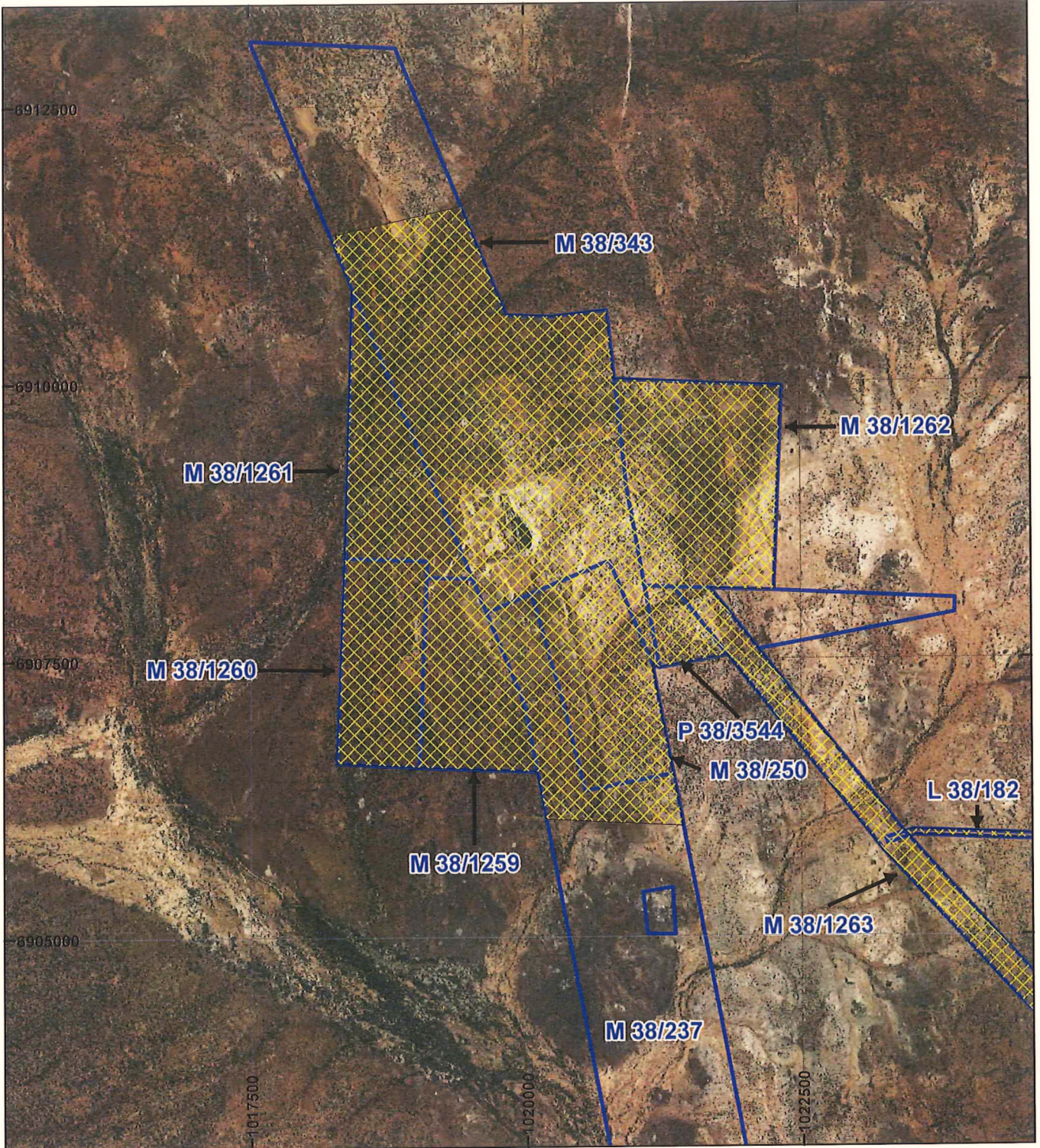
Officer with delegated authority under Section 20 of the Environmental Protection Act 1986

Information derived from this map should be confirmed with the data custodian acknowledged by the agency acronym in the legend.



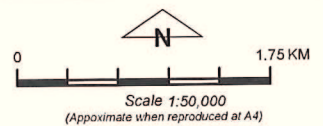
WA Crown Copyright 2002

# PLAN 6657/1B



## LEGEND

- Mining Tenements
  - Clearing Instruments
  - Areas Approved to Clear
- Cosmo Newbery 3442 Apr 2011 Mosaic  
 Duketon 3342 Apr 2011 Mosaic



Geocentric Datum Australia 1994

*Note: the data in this map have not been projected. This may result in geometric distortion or measurement inaccuracies.*

*M. Leybourne* ..... Date *15/11/15*  
 MARNIE LEYBOURNE

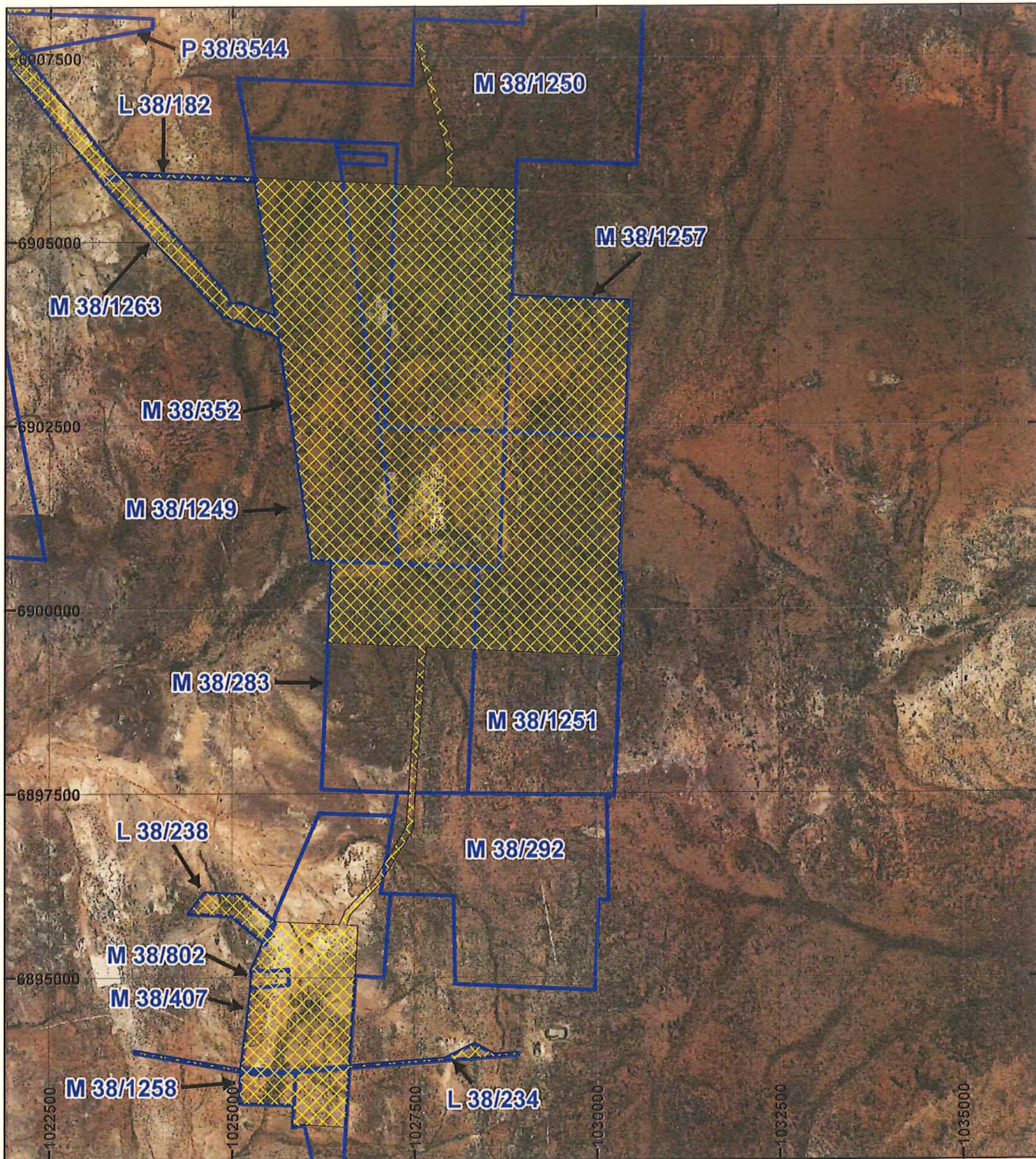
Officer with delegated authority under Section 20 of the Environmental Protection Act 1986

Information derived from this map should be confirmed with the data custodian acknowledged by the agency acronym in the legend.



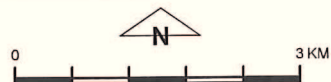
WA Crown Copyright 2002

# PLAN 6657/1C



## LEGEND

- Mining Tenements
  - Clearing Instruments
  - Areas Approved to Clear
- Cosmo Newbery 3442 Apr 2011 Mosaic  
 Duketon 3342 Apr 2011 Mosaic



Scale 1:76,000  
 (Approximate when reproduced at A4)

Geocentric Datum Australia 1994

*Note: the data in this map have not been projected. This may result in geometric distortion or measurement inaccuracies.*

*M. Dyke* Date *18/10/11*  
 MARNIE LEYBOURNE

Officer with delegated authority under Section 20 of the Environmental Protection Act 1986

Information derived from this map should be confirmed with the data custodian acknowledged by the agency acronym in the legend.



WA Crown Copyright 2002