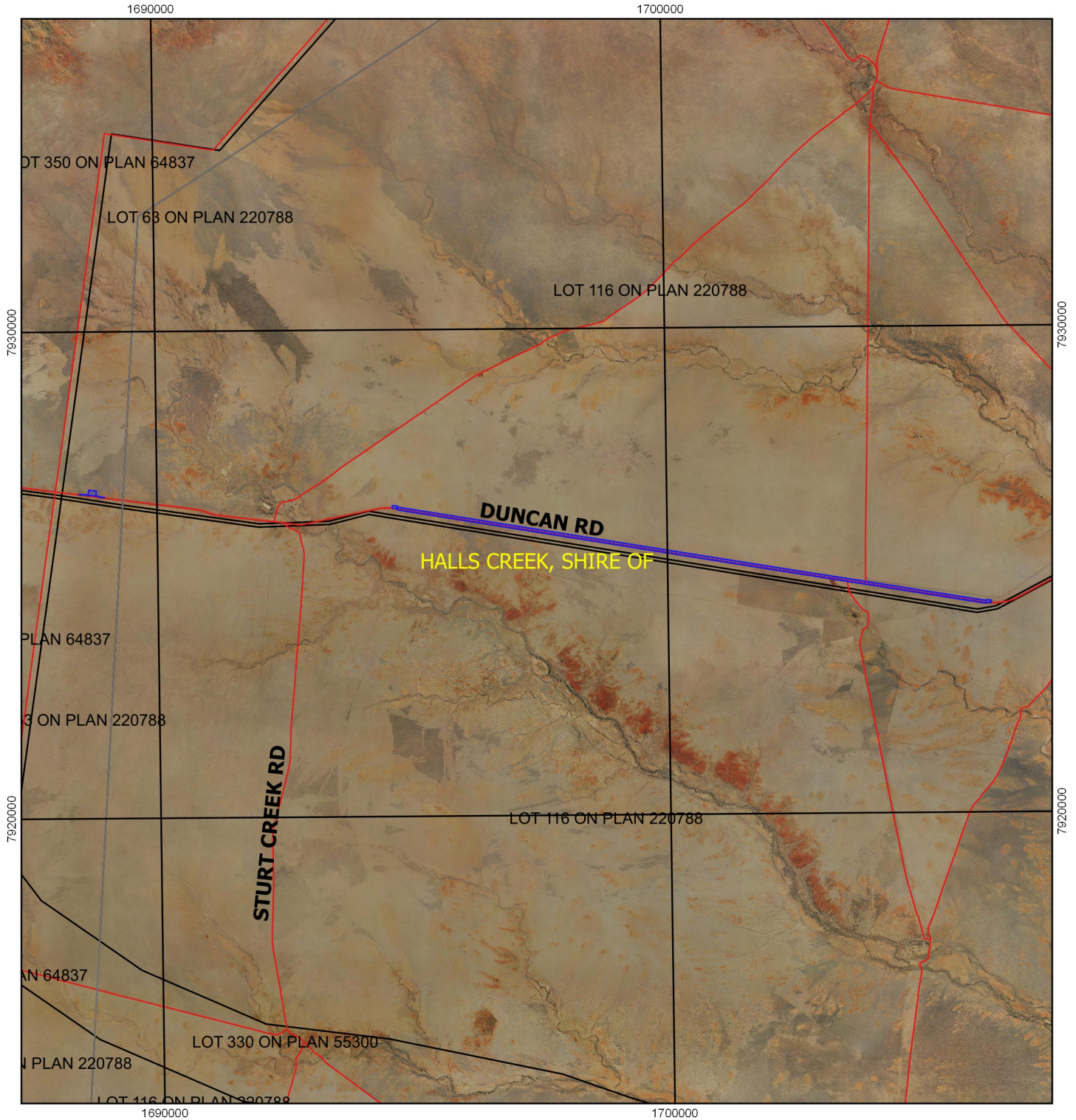






# CPS 6663/1 - Map a



## Legend

-  Areas applied to clear
  -  Roads
  -  LGA
  -  Cadastre
- Virtual Mosaic (LGATE-V001)



1:90,000

MGA 94

Geocentric Datum of Australia 1994

..... Date.....

Officer with delegated authority under Section 20  
of the Environmental Protection Act 1986



GOVERNMENT OF  
WESTERN AUSTRALIA