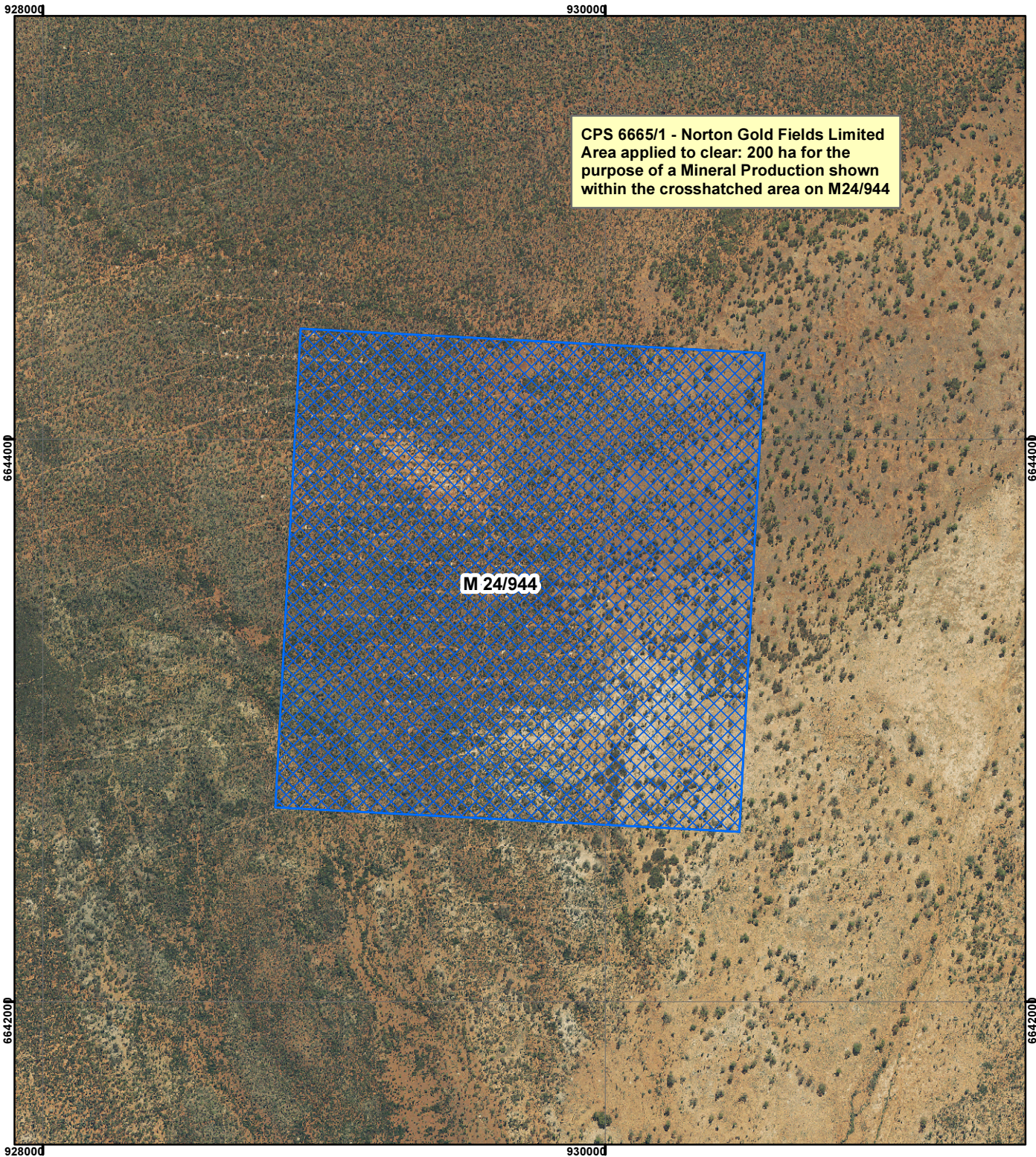


CPS 6665/1 - Norton Gold Fields Limited




CPS 6665/1 - Norton Gold Fields Limited
Area applied to clear: 200 ha for the
purpose of a Mineral Production shown
within the crosshatched area on M24/944

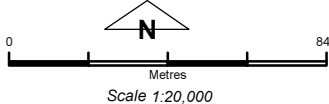
M 24/944

Legend

 Clearing Instruments

Mining Tenements

 Mining Tenements



Geocentric Datum Australia 1994
Note: the data in this map have not been
projected. This may result in geometric
distortion or measurement inaccuracies.

..... Date

Officer with delegated authority under Section 20 of
the Environmental Protection Act 1986

Information derived from this map should be
confirmed with the data custodian acknowledged
by the agency acronym in the legend.

