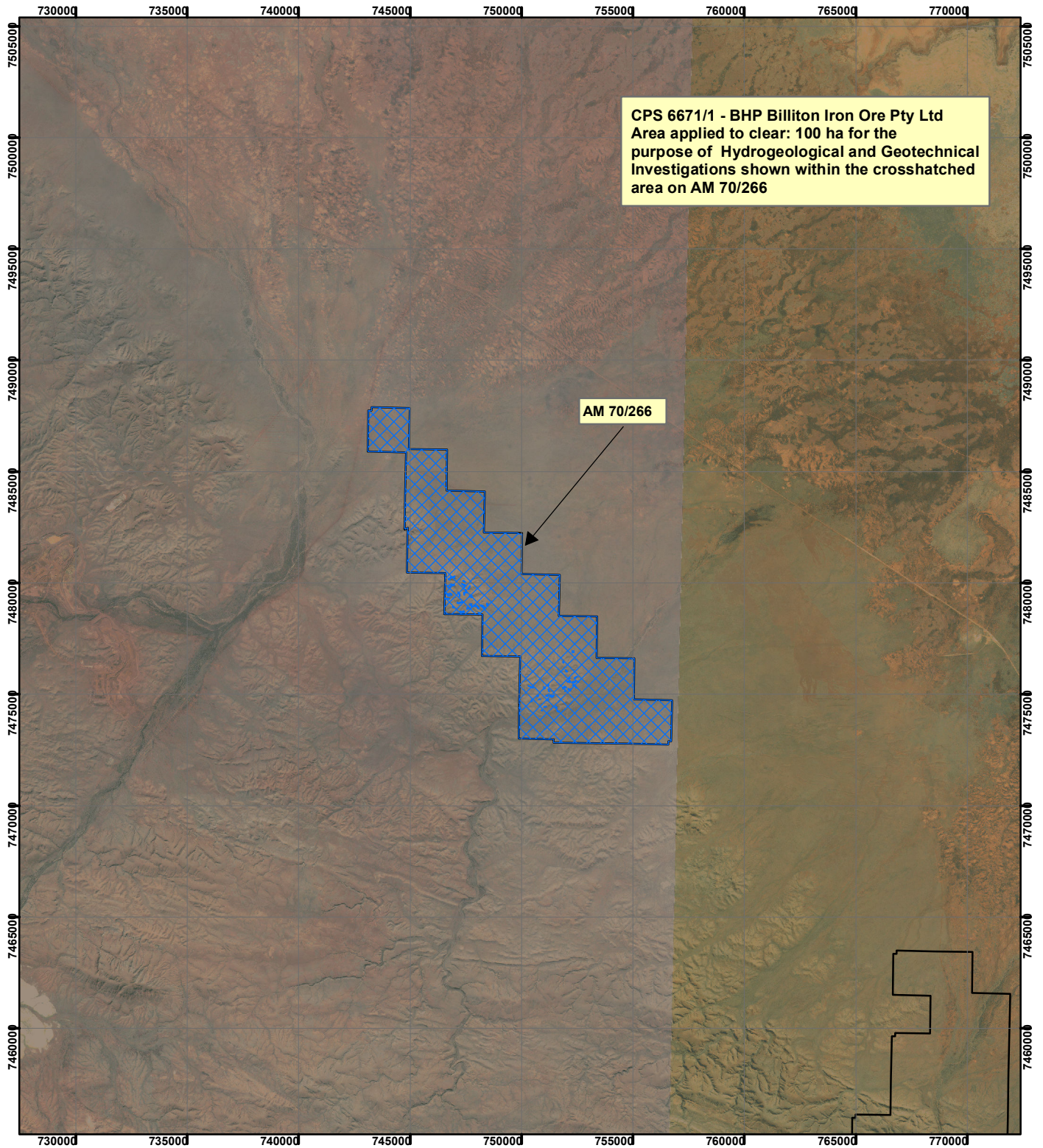



CPS 6671/1 - BHP Billiton Iron Ore Pty Ltd




CPS 6671/1 - BHP Billiton Iron Ore Pty Ltd
Area applied to clear: 100 ha for the
purpose of Hydrogeological and Geotechnical
Investigations shown within the crosshatched
area on AM 70/266

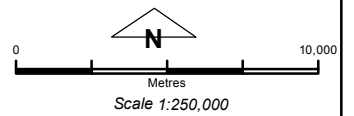
AM 70/266

Legend

 Clearing Instruments

Mining Tenements

 Mining Tenements



Geocentric Datum Australia 1994

Note: the data in this map have not been projected. This may result in geometric distortion or measurement inaccuracies.

..... Date

Officer with delegated authority under Section 20 of the Environmental Protection Act 1986

Information derived from this map should be confirmed with the data custodian acknowledged by the agency acronym in the legend.

