

CPS 6687/2 - Map b

118°42.720'E

118°43.380'E

118°44.040'E

118°44.700'E

21°4.704'S

21°5.376'S

21°6.048'S

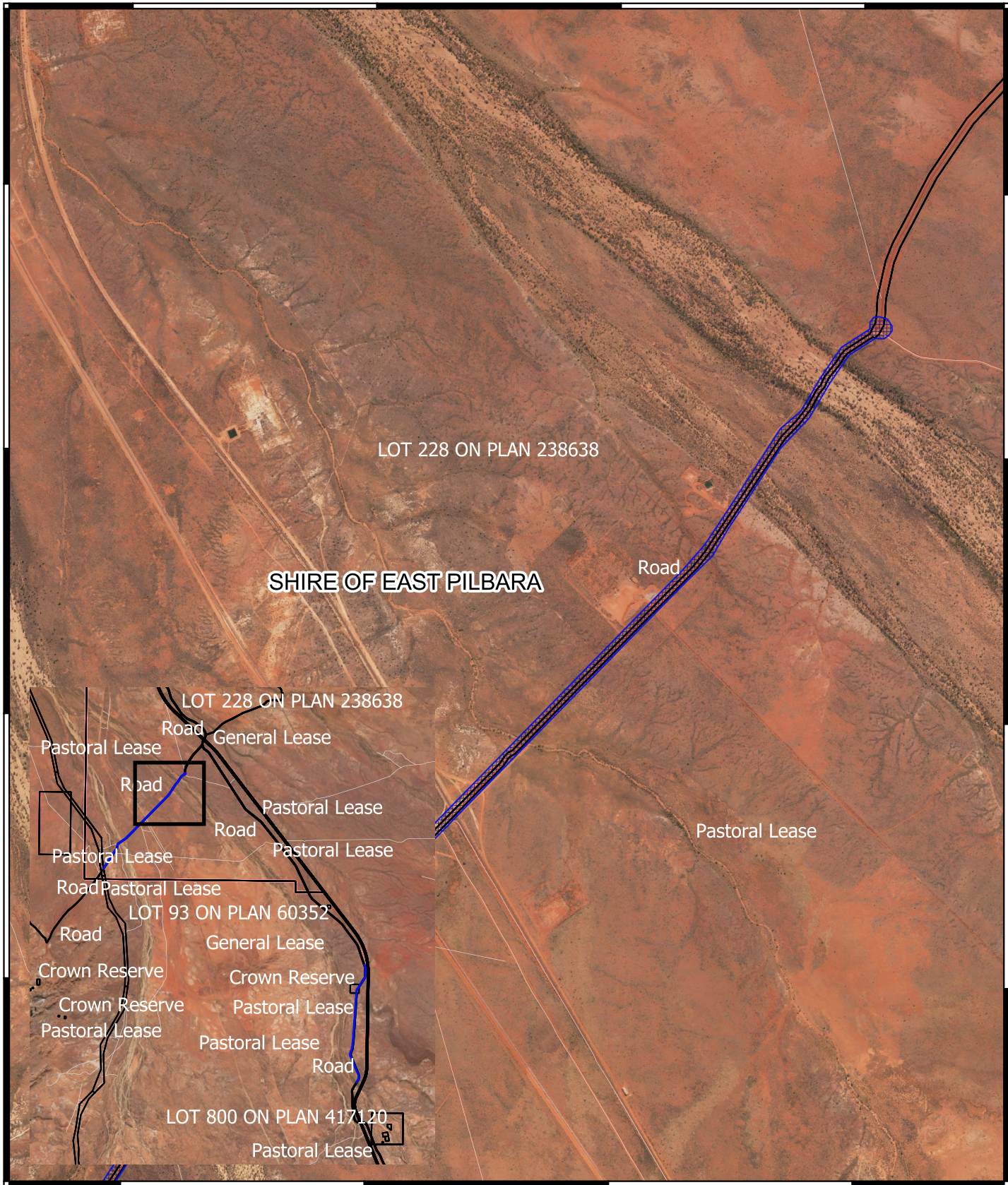
21°6.720'S

21°4.704'S

21°5.376'S

21°6.048'S

21°6.720'S




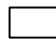

118°42.720'E

118°43.380'E

118°44.040'E

118°44.700'E

Legend

-  CPS areas applied to clear
-  Land Tenure LGATE - 226
-  Local Government Authorities

Road Centrelines
 No Classification

Image



1:25000

0 250 500 750 1000 m



MGA 94
 Geocentric Datum of Australia 1994



**GOVERNMENT OF
 WESTERN AUSTRALIA**