

CPS 6687/2 - Map c

118°48.660'E

118°49.320'E

118°49.980'E

118°50.640'E

S 21°09.408'S

21°09.408'S

S 21°10.080'S

21°10.080'S

S 21°10.752'S

21°10.752'S

S 21°11.424'S

21°11.424'S

S 21°12.096'S

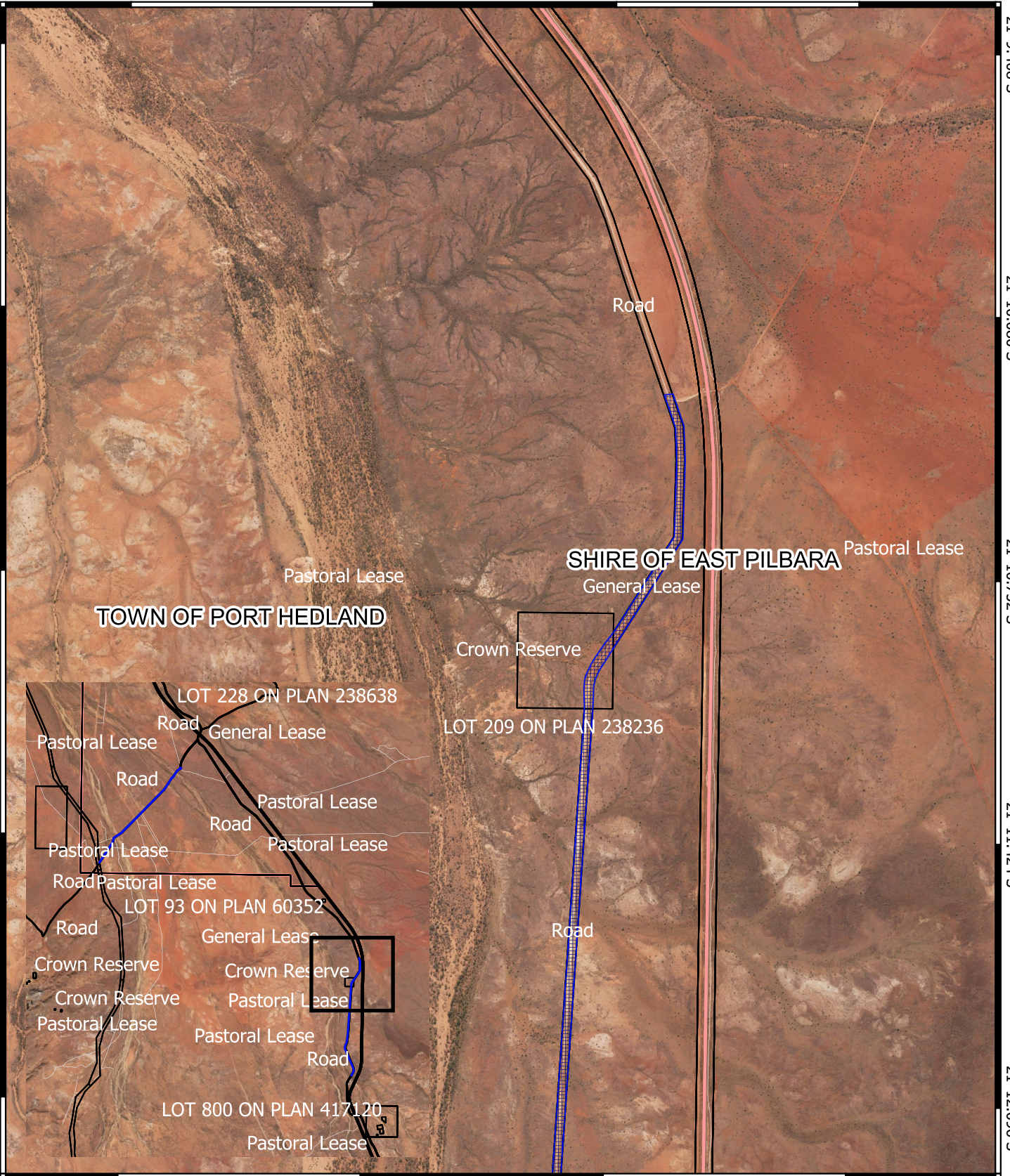
21°12.096'S

118°48.660'E


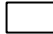

118°49.320'E

118°49.980'E

118°50.640'E



Legend

-  CPS areas applied to clear
-  Land Tenure LGATE - 226
-  Local Government Authorities

Road Centrelines
 No Classification

Image



1:25000

0 250 500 750 1000 m



MGA 94
 Geocentric Datum of Australia 1994



**GOVERNMENT OF
 WESTERN AUSTRALIA**