

CPS 6687/2 - Map d

118°48.660'E

118°49.320'E

118°49.980'E

118°50.640'E

21°11.424'S

21°12.096'S

21°12.768'S

21°13.440'S

21°14.112'S

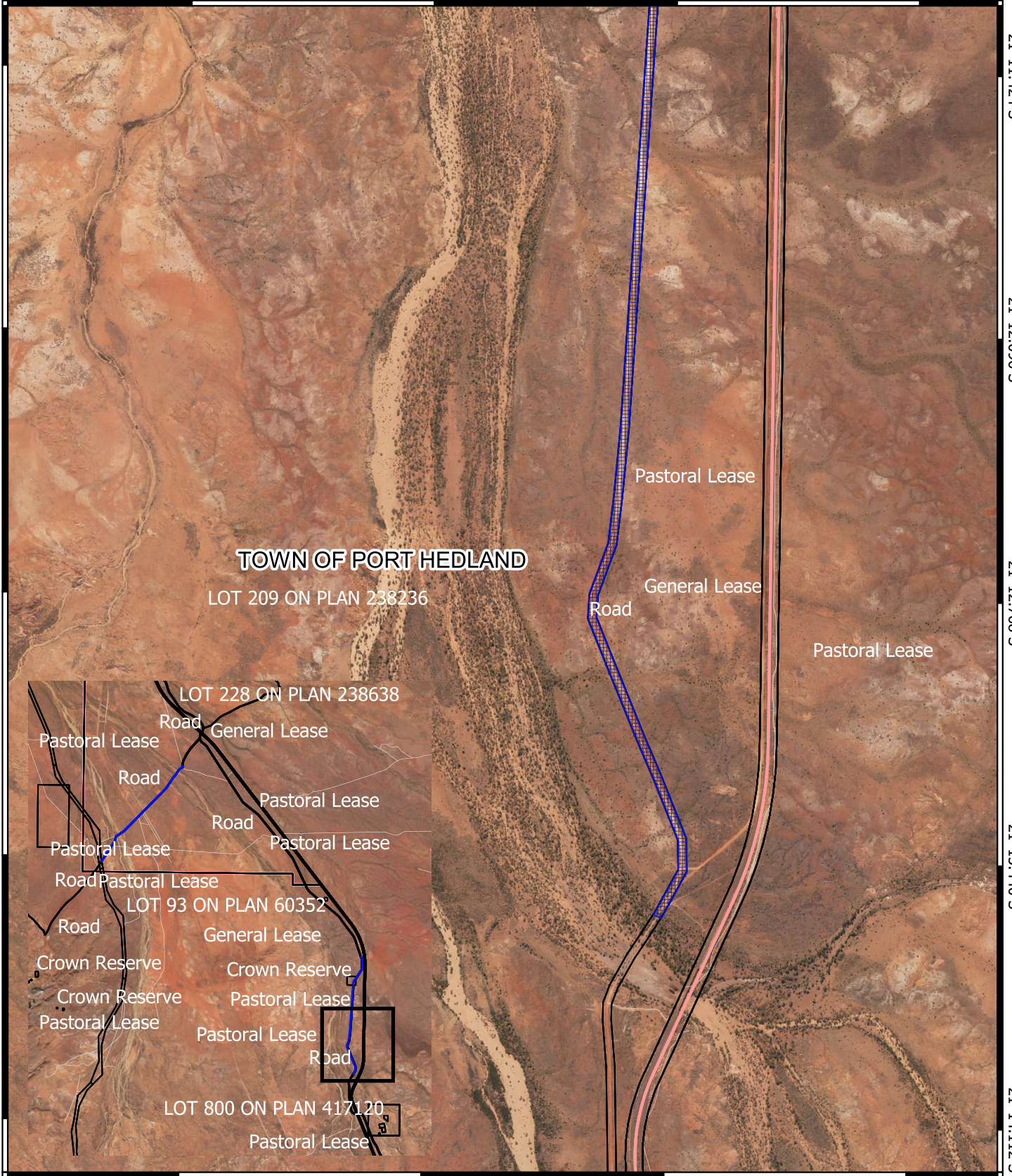
21°11.424'S

21°12.096'S


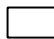

21°12.768'S

21°13.440'S

21°14.112'S



Legend

-  CPS areas applied to clear
-  Land Tenure LGATE - 226
-  Local Government Authorities

Road Centrelines
 No Classification

Image



1:25000

0 250 500 750 1000 m



MGA 94
 Geocentric Datum of Australia 1994



**GOVERNMENT OF
 WESTERN AUSTRALIA**