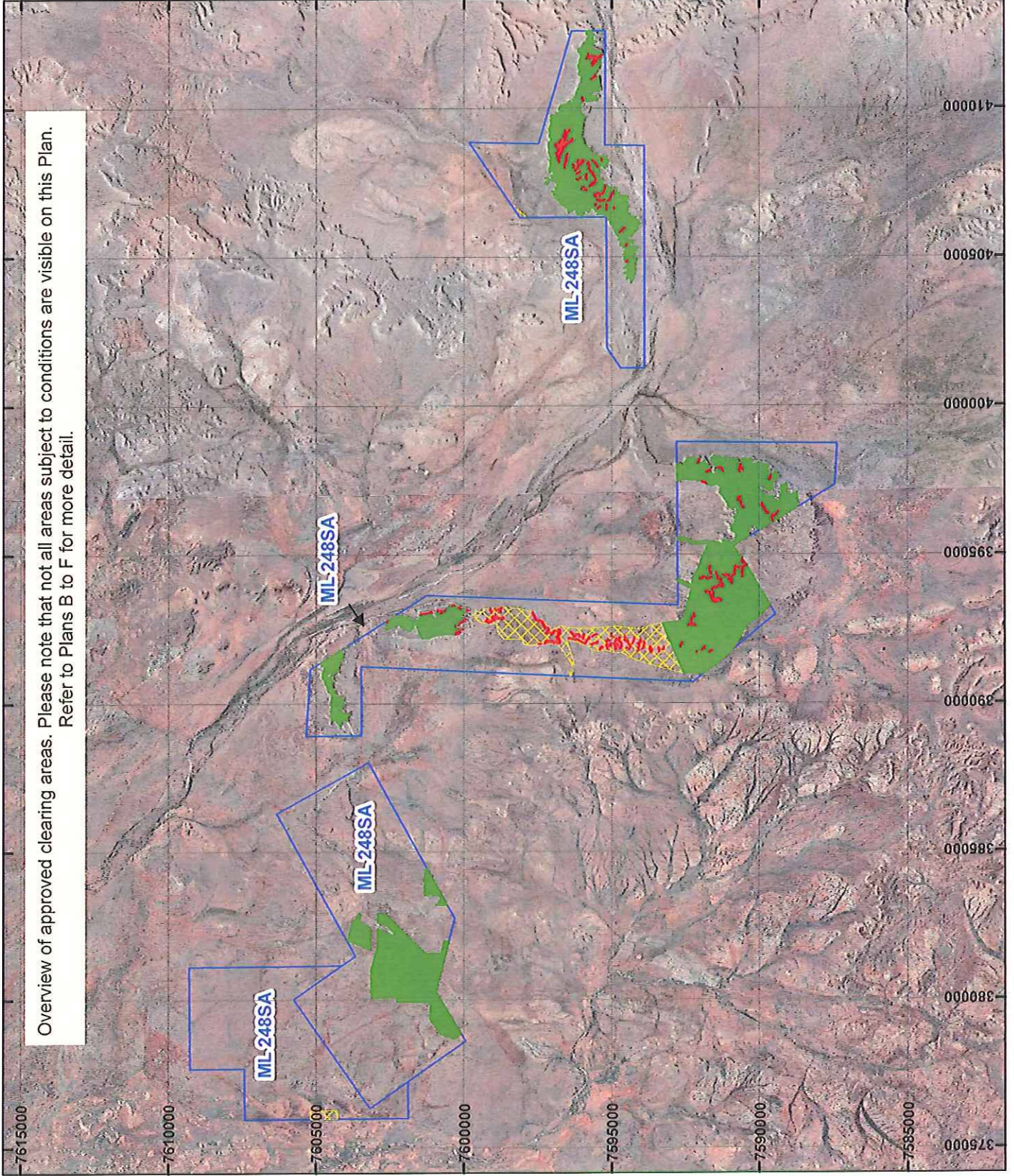


PLAN 6689/1A

Overview of approved clearing areas. Please note that not all areas subject to conditions are visible on this Plan. Refer to Plans B to F for more detail.



LEGEND

- Mining Tenements
- Clearing Instruments
- Area Approved to Clear
- Area Subject to Conditions
- Area Subject to Conditions
- Area Subject to Conditions
- SEAMLESS MOSAIC



0 6 Km

Scale 1:175,000
(Approximate when reproduced at A4)

Geocentric Datum Australia 1994

Note: the data in this map have not been projected. This may result in geometric distortion or measurement inaccuracies.

Virginia Simmis Date 1/10/15

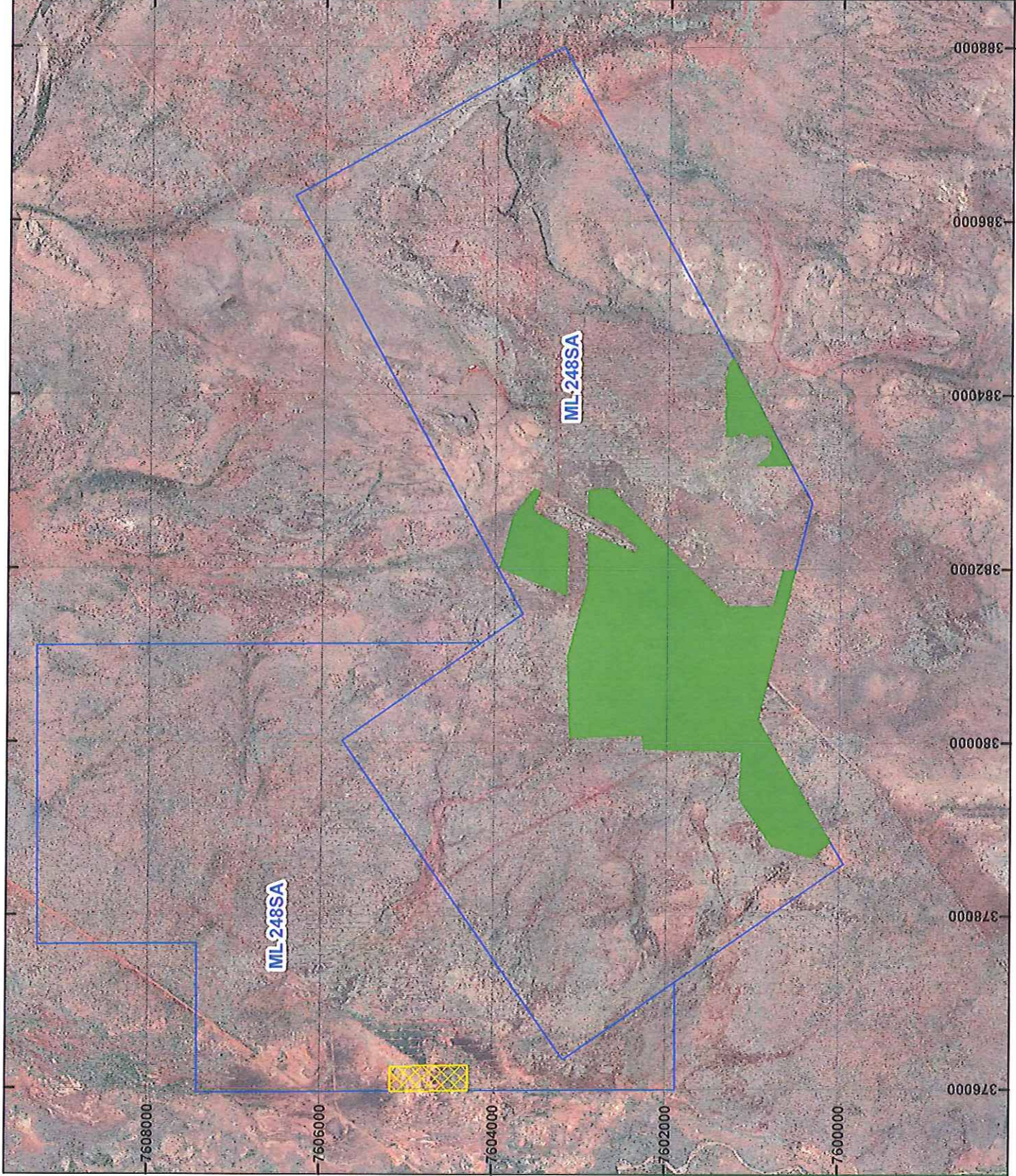
VIRGINIA SIMMIS
Officer with delegated authority under Section 20 of
the Environmental Protection Act 1986

Information derived from this map should be confirmed with the data custodian acknowledged by the agency acronym in the legend.



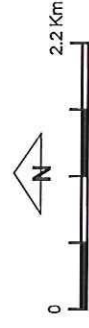
WA Crown Copyright 2002

PLAN 6689/1B



LEGEND

- Mining Tenements
 - Clearing Instruments
 - Areas Approved to Clear
 - Areas Subject to Conditions
 - Areas Subject to Conditions
 - Areas Subject to Conditions
- SEAMLESS MOSAIC



Scale 1:60,000
(Approximate when reproduced at A4)

Geocentric Datum Australia 1994

Note: the data in this map have not been projected. This may result in geometric distortion measurement inaccuracies.

Virginia Simms Date 1/10/15

VIRGINIA SIMMS

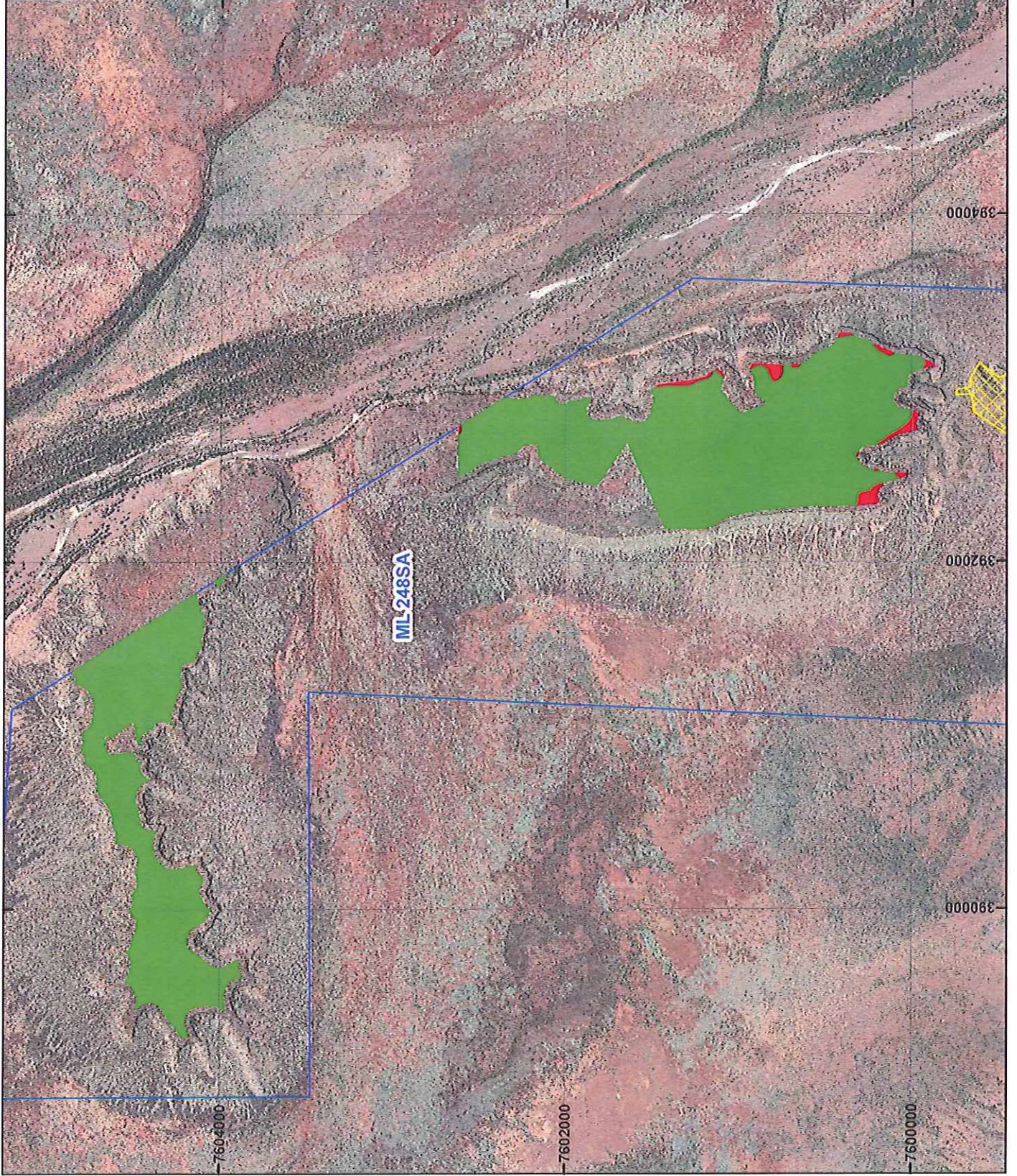
Officer with delegated authority under Section 20 of the Environmental Protection Act 1986

Information derived from this map should be confirmed with the data custodian acknowledged by the agency acronym in the legend.



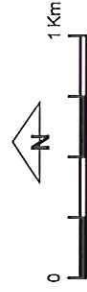
WA Crown Copyright 2002

PLAN 6689/1C



LEGEND

- Mining Tenements
 - Clearing Instruments
 - Areas Approved to Clear
 - Areas Subject to Conditions
 - Areas Subject to Conditions
 - Areas Subject to Conditions
- SEAMLESS MOSAIC



Scale 1:30,000
(Approximate when reproduced at A4)

Geocentric Datum Australia 1994

Note: the data in this map have not been projected. This may result in geometric distortion or measurement inaccuracies.

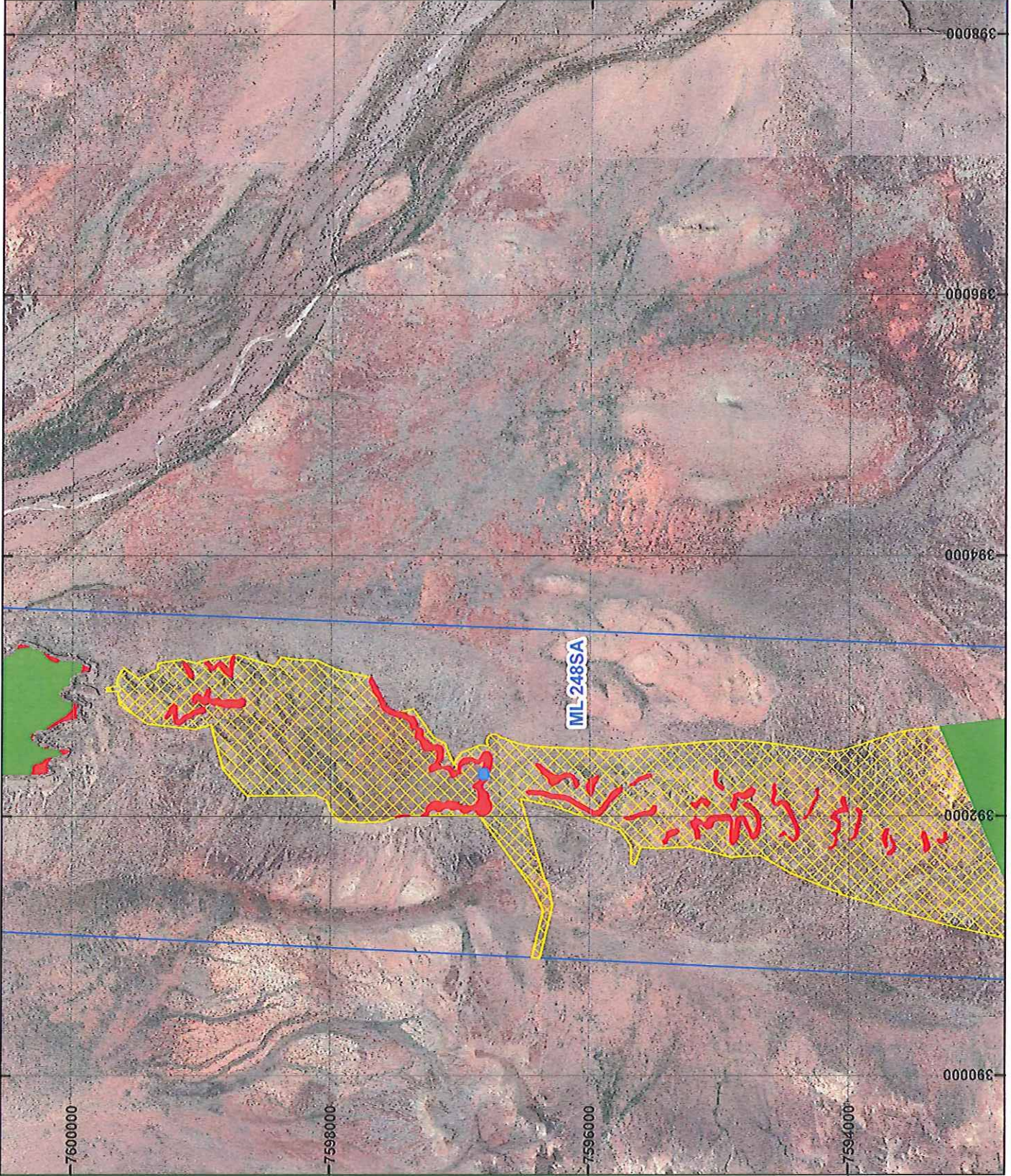
Virginia Simms Date 11/01/15

VIRGINIA SIMMS
Officer with delegated authority under Section 20 of the Environmental Protection Act 1986
Information derived from this map should be confirmed with the data custodian acknowledged by the agency acronym in the legend.



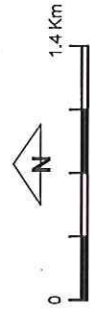
WA Green Copyright 2002

PLAN 6689/1D



LEGEND

- Mining Tenements
 - Clearing Instruments
 - Areas Approved to Clear
 - Areas Subject to Conditions
 - Areas Subject to Conditions
 - Areas Subject to Conditions
- SEAMLESS MOSAIC



Scale 1:40,000
(Approximate when reproduced at A4)

Geocentric Datum Australia 1994

Note: the data in this map have not been projected. This may result in geometric distortion or measurement inaccuracies.

Virginia Simms
VIRGINIA SIMMS

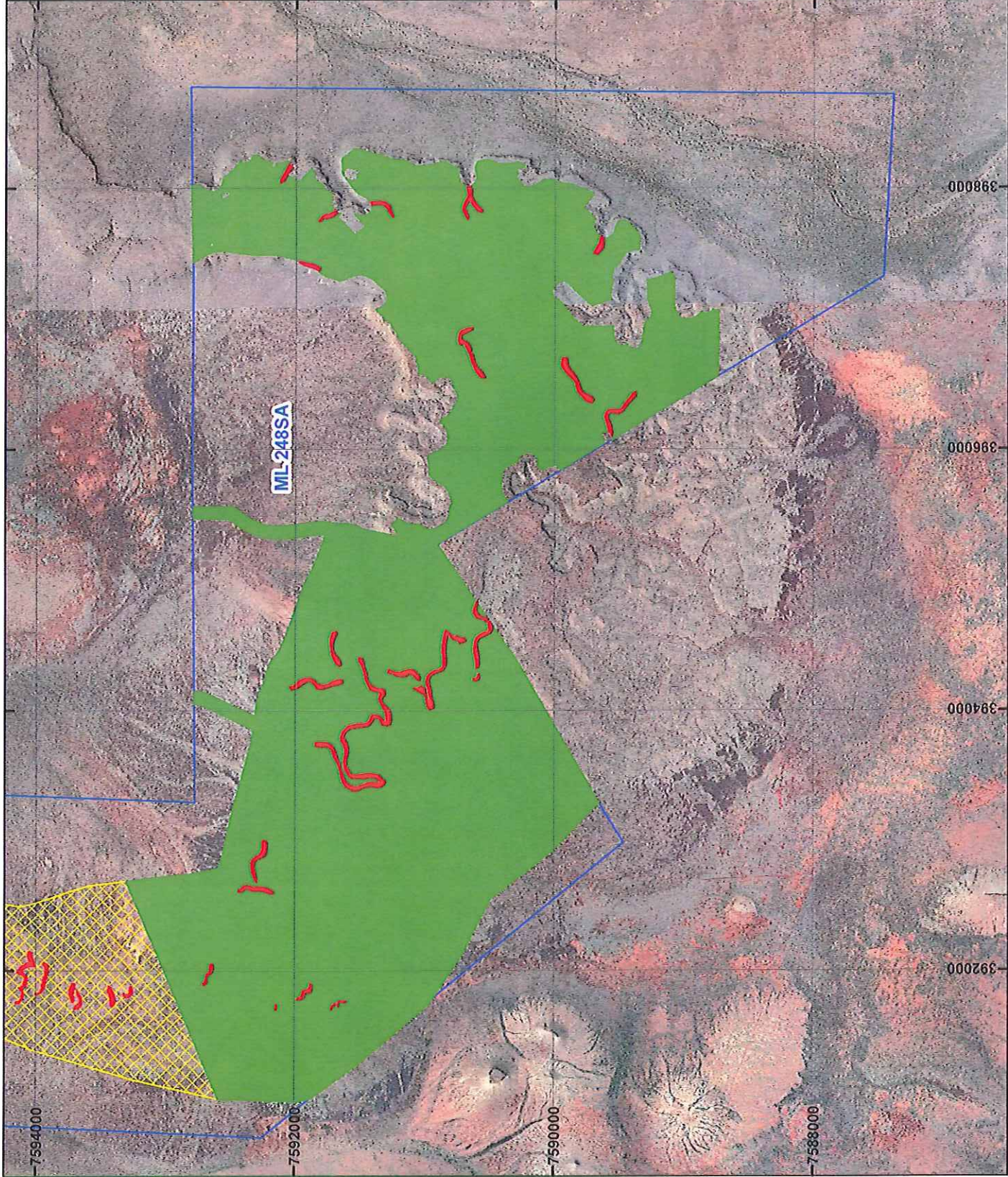
Officer with delegated authority under Section 20 of the Environmental Protection Act 1986

Information derived from this map should be confirmed with the data custodian acknowledged by the agency acronym in the legend.



WA Crown Copyright 2002

PLAN 6689/1E



LEGEND

- Mining Tenements
 - Clearing Instruments
 - Areas Approved to Clear
 - Areas Subject to Conditions
 - Areas Subject to Conditions
 - Areas Subject to Conditions
- SEAMLESS MOSAIC



Scale 1:40,000
(Approximate when reproduced at A4)

Geocentric Datum Australia 1994

Note: the data in this map have not been projected. This may result in geometric distortion or measurement inaccuracies.

Virginia Simms Date: 1/10/15

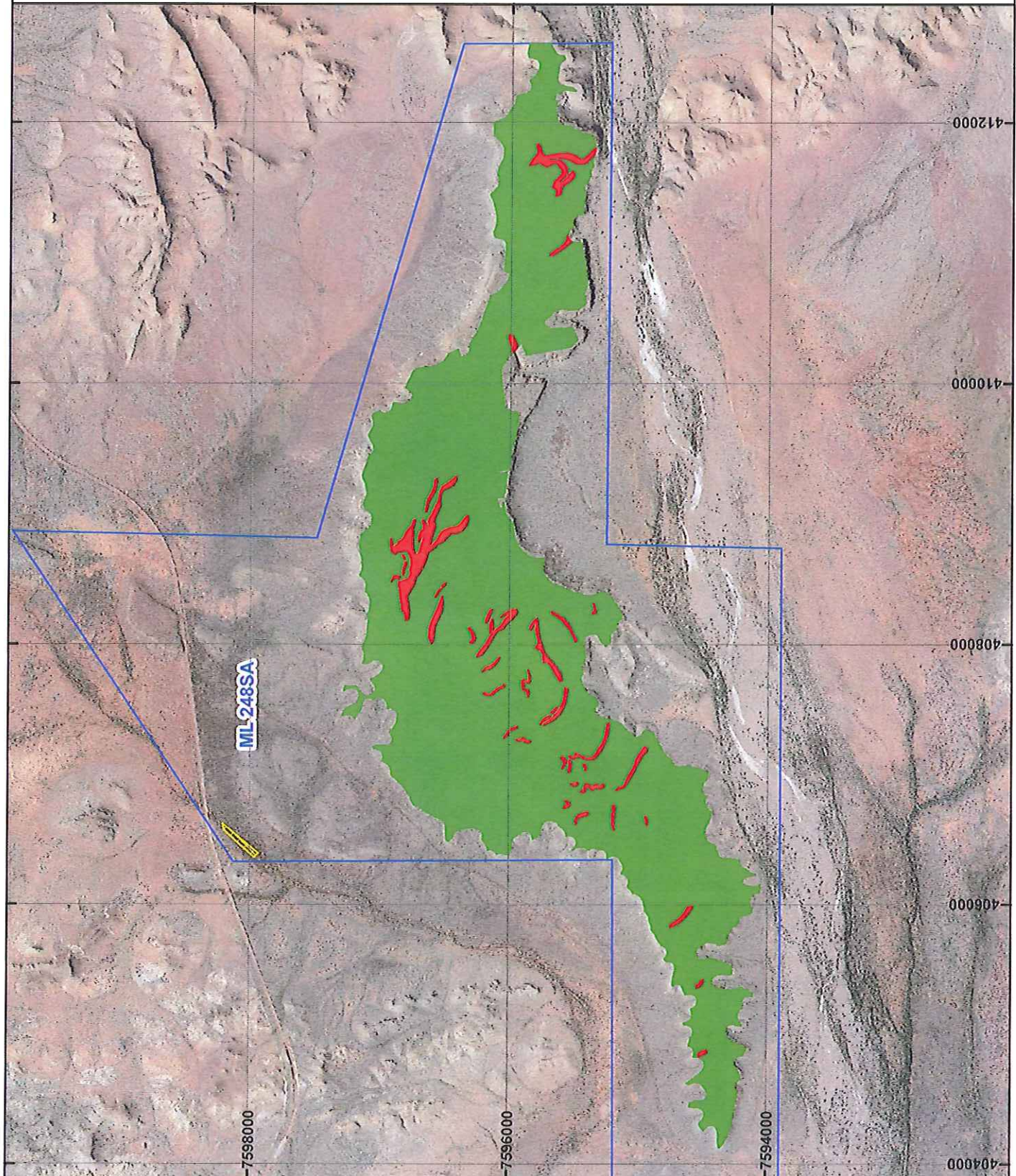
VIRGINIA SIMMS
Officer with delegated authority under Section 20 of the Environmental Protection Act 1986

Information derived from this map should be confirmed with the data custodian acknowledged by the agency acronym in the legend.

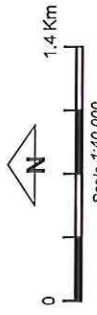


WA Crown Copyright 2002

PLAN 6689/1F



- LEGEND**
- Mining Tenements
 - Clearing Instruments
 - Areas Approved to Clear
 - Areas Subject to Conditions
 - Areas Subject to Conditions
 - Areas Subject to Conditions
- SEAMLESS MOSAIC**



Scale 1:40,000
(Approximate when reproduced at A4)

Geocentric Datum Australia 1994

Note: the data in this map have not been projected. This may result in geometric distortion or measurement inaccuracies.

Virginia Simms Date: 1/10/15

VIRGINIA SIMMS
Officer with delegated authority under Section 20 of the Environmental Protection Act 1986

Information derived from this map should be confirmed with the data custodian acknowledged by the agency acronym in the legend.



WA Crown Copyright 2002