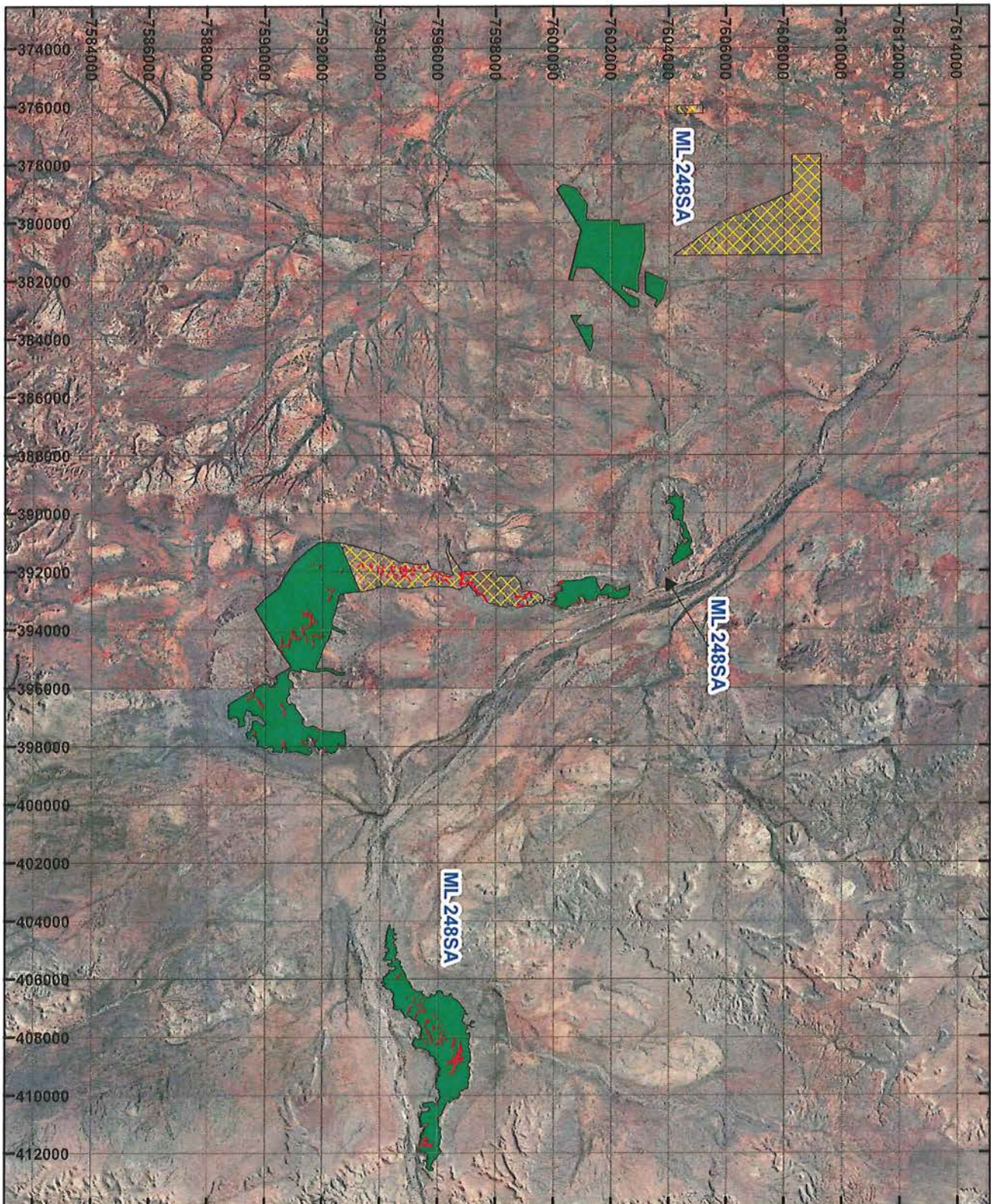
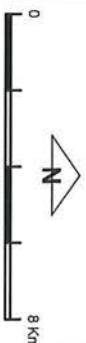


PLAN 6689/2A



LEGEND

- Mining Tenements
- Clearing Instruments**
 - Areas Approved to Clear
 - Areas Subject to Conditions
 - Areas Subject to Conditions
 - Areas Subject to Conditions
 - Areas Subject to Conditions



Scale 1:190,000
(Approximate when reproduced at A4)

Geocentric Datum Australia 1994
Note: the data in this map have not been projected. This may result in geometric distortions or measurement inaccuracies.

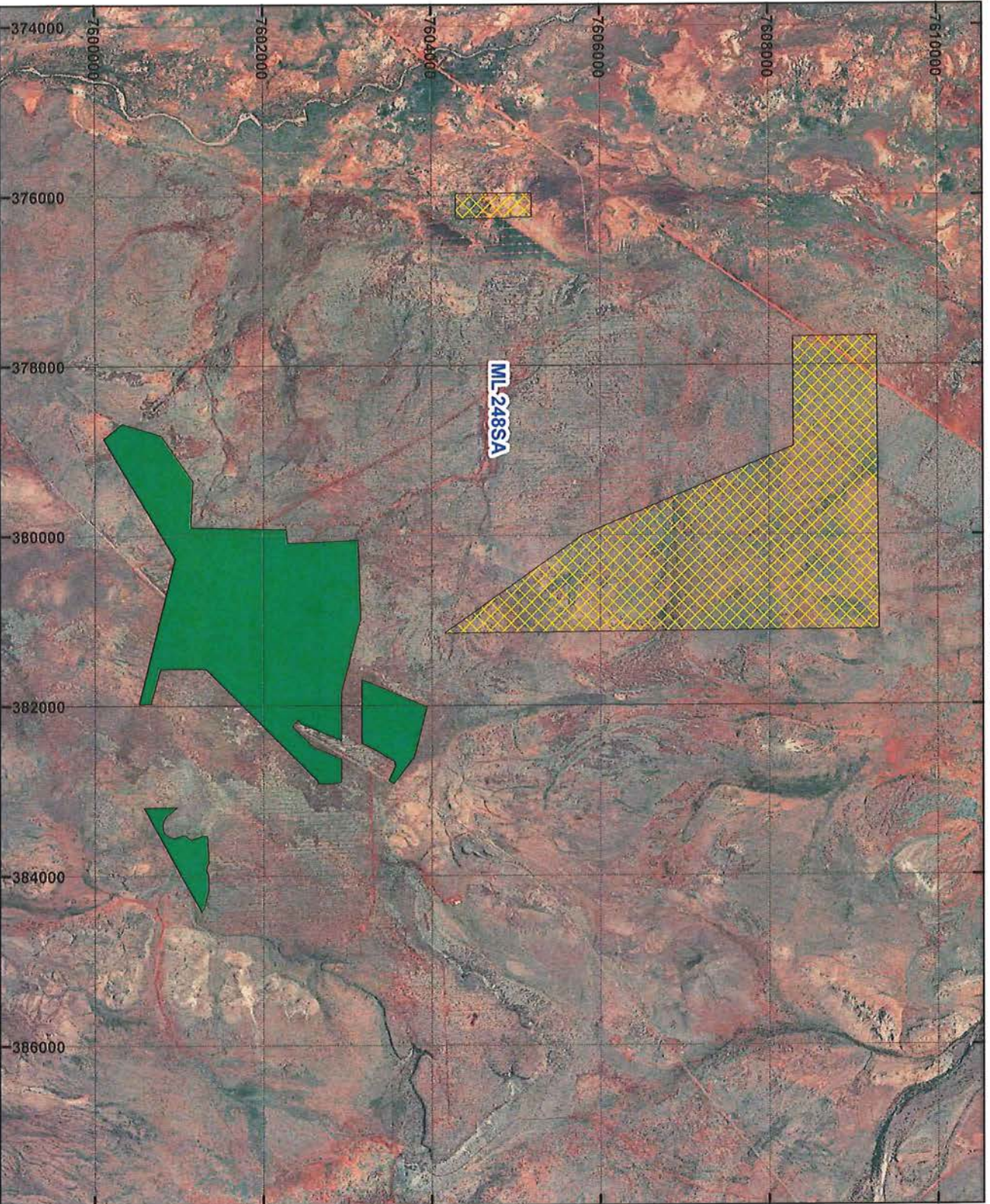
MARINIE LEYBOURNE Date 23/6/16

Officer with delegated authority under Section 20 of the Environmental Protection Act 1986
Information derived from this map should be confirmed with the data custodian acknowledged by the agency acronym in the legend.



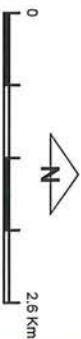
WA Crown Copyright 2002

PLAN 6689/2B



LEGEND

- Mining Tenements
 - Clearing Instruments
 - Areas Approved to Clear
 - Areas Subject to Conditions
 - Areas Subject to Conditions
 - Areas Subject to Conditions
- SEAMLESS MOSAIC**



Geocentric Datum Australia 1994
 Note: The data in this map have not been projected. This may result in geometric distortion or measurement inaccuracies.

M. W. k. Date 23/6
MARNIE LEYBOURNE

Officer with delegated authority under Section 20 of the Environmental Protection Act 1986

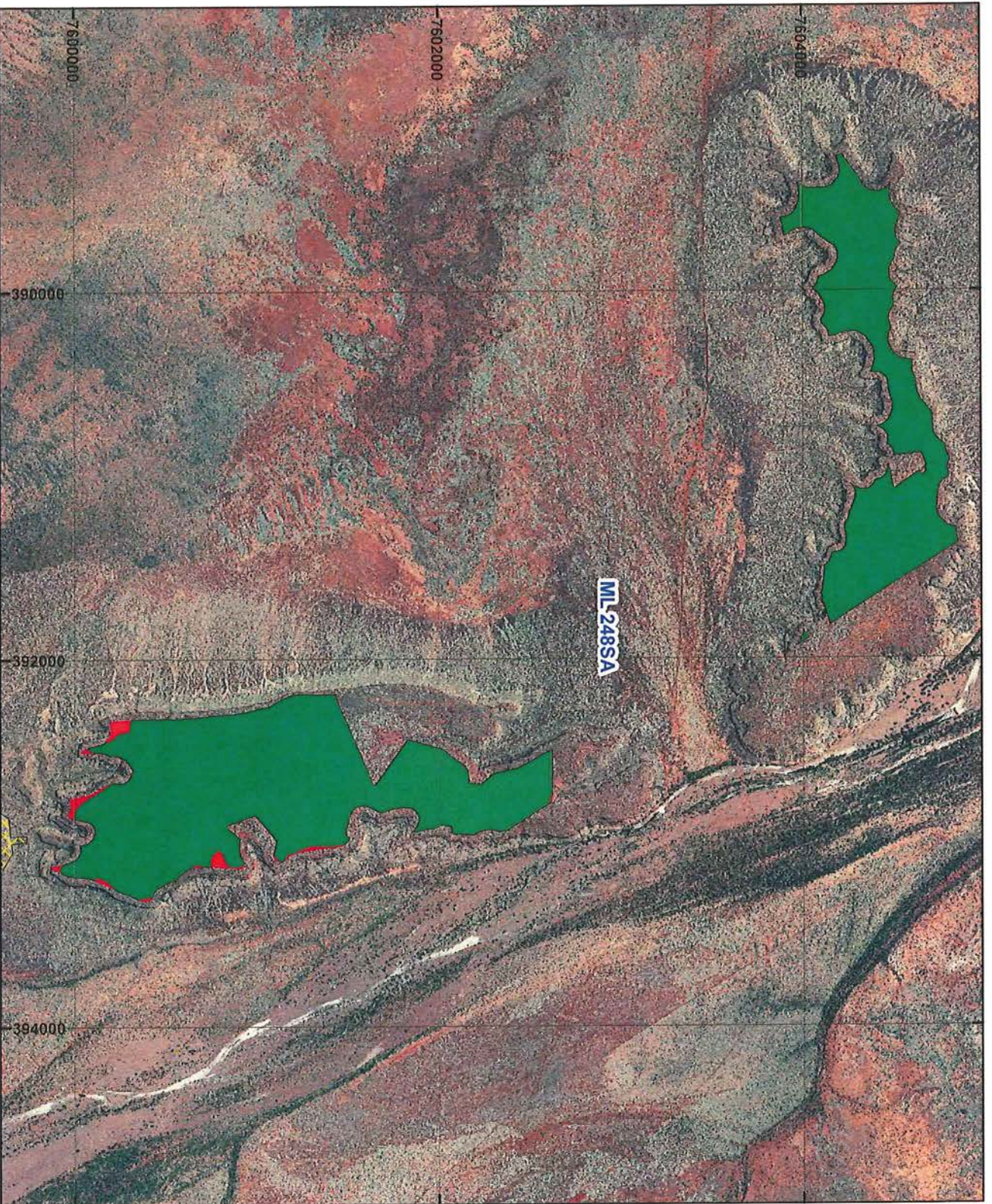
Information derived from this map should be confirmed with the data custodian acknowledged by the agency acronym in the legend.



WA Crown Copyright 2022

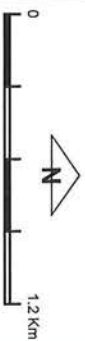
16

PLAN 6689/2C



LEGEND

- Mining Tenements
 - Clearing Instruments
 - Areas Approved to Clear
 - Areas Subject to Conditions
 - Areas Subject to Conditions
 - Areas Subject to Conditions
- SEAMLESS MOSAIC**



Geocentric Datum Australia 1994
 Note: the data in this map have not been projected. This may result in geometric distortion or measurement inaccuracies.

M. *ML* Date: 23/6 116
 MARNIE LEYBOURNE

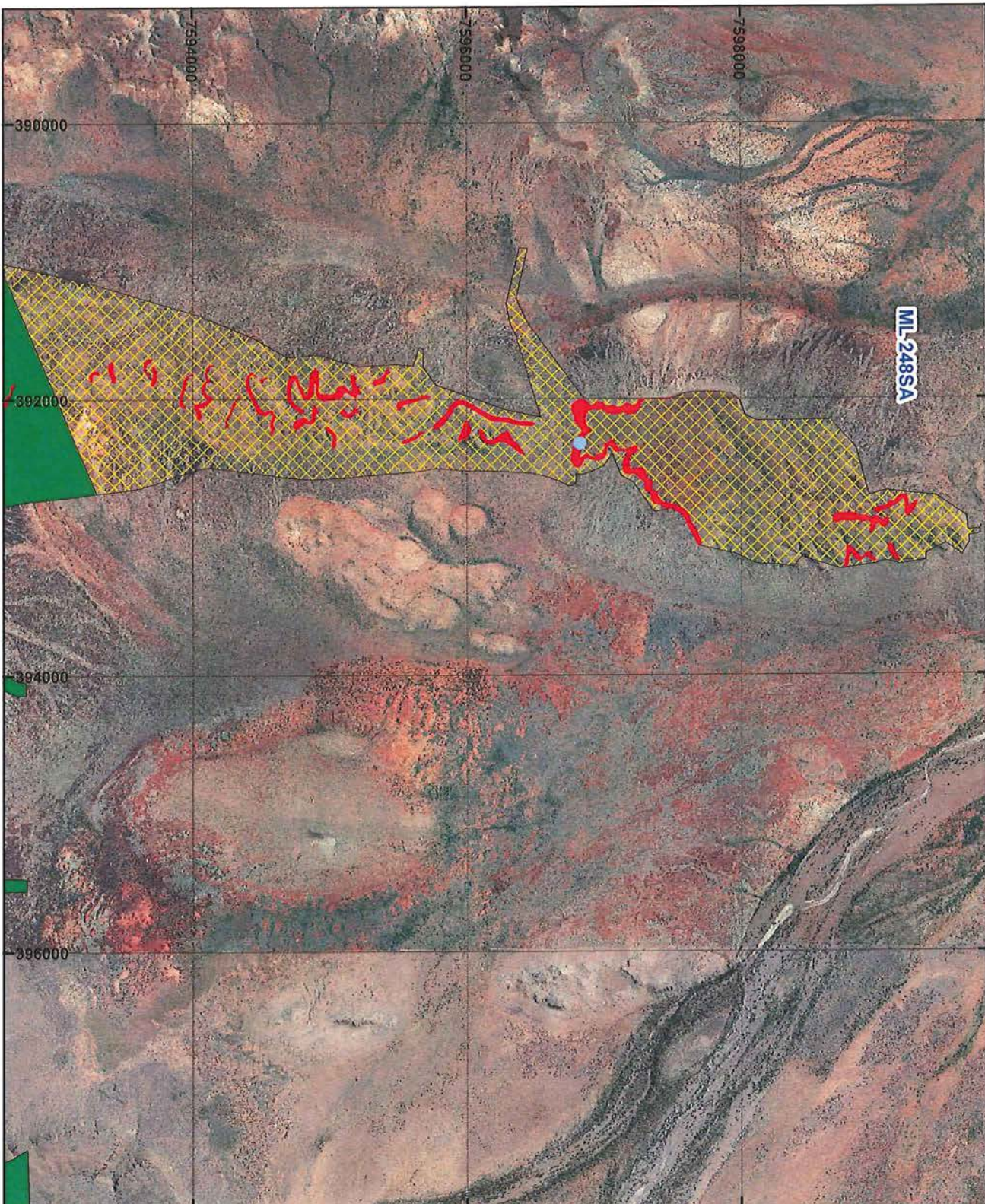
Officer with delegated authority under Section 20 of the Environmental Protection Act 1986

Information derived from this map should be confirmed with the data custodian acknowledged by the agency acronym in the legend.



WA Crown Copyright 2002

PLAN 6689/2D



LEGEND

-  Mining Tenements
 -  Clearing Instruments
 -  Areas Approved to Clear
 -  Areas Subject to Conditions
 -  Areas Subject to Conditions
 -  Areas Subject to Conditions
- SEAMLESS MOSAIC**



Geocentric Datum Australia 1994
 Note: the data in this map have not been projected. This may result in geometric distortion or measurement inaccuracies.

M. Leve
 MARNIE LEVBOURNE Date 23/6 116

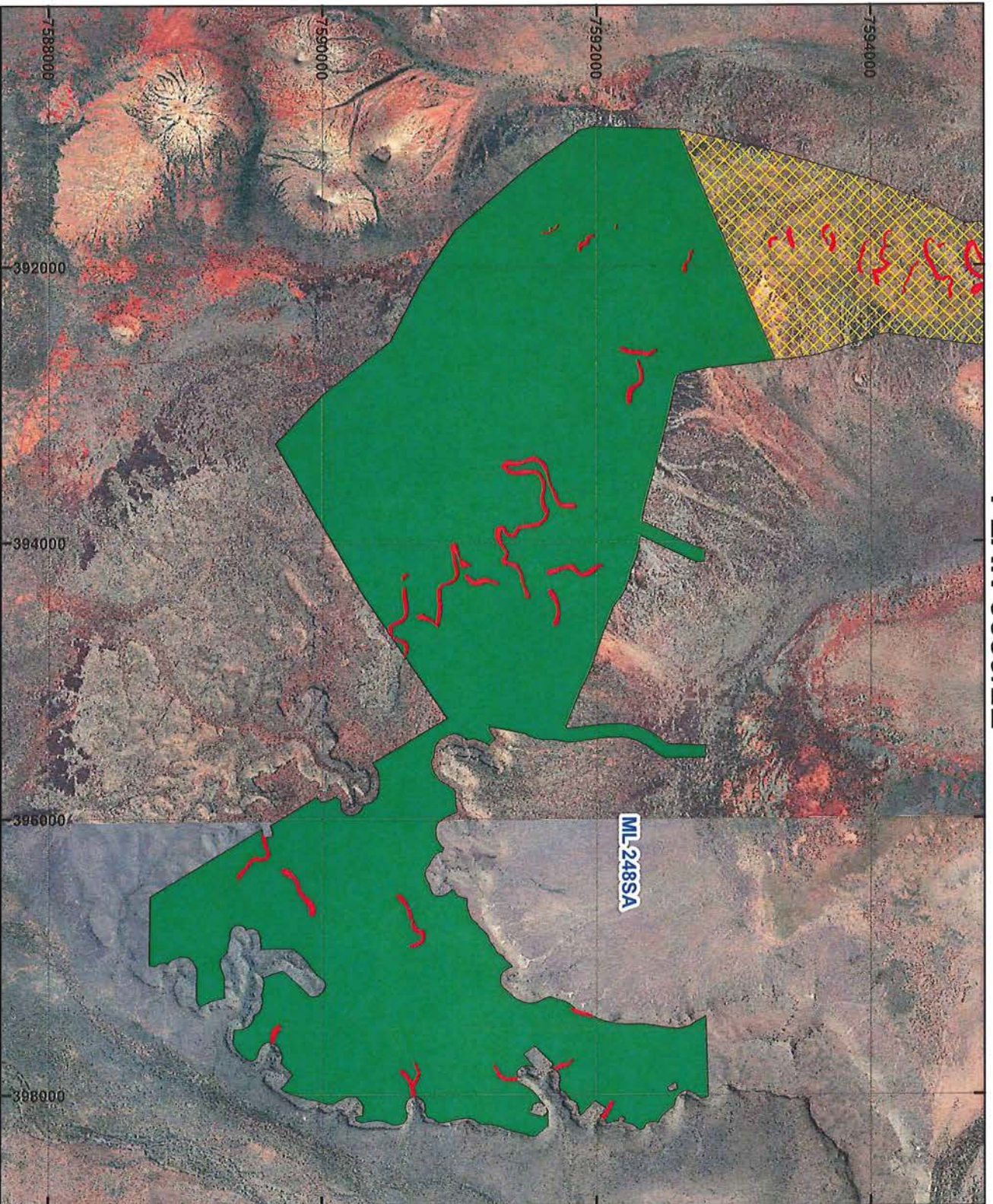
Officer with delegated authority under Section 20 of the Environmental Protection Act 1986

Information derived from this map should be confirmed with the data custodian acknowledged by the agency acronym in the legend.



WA Government Copyright 2002

PLAN 6689/2E



LEGEND

- Mining Tenements
- Clearing Instruments
- Areas Approved to Clear
- Areas Subject to Conditions
- Areas Subject to Conditions
- Areas Subject to Conditions
- SEAMLESS MOSAIC

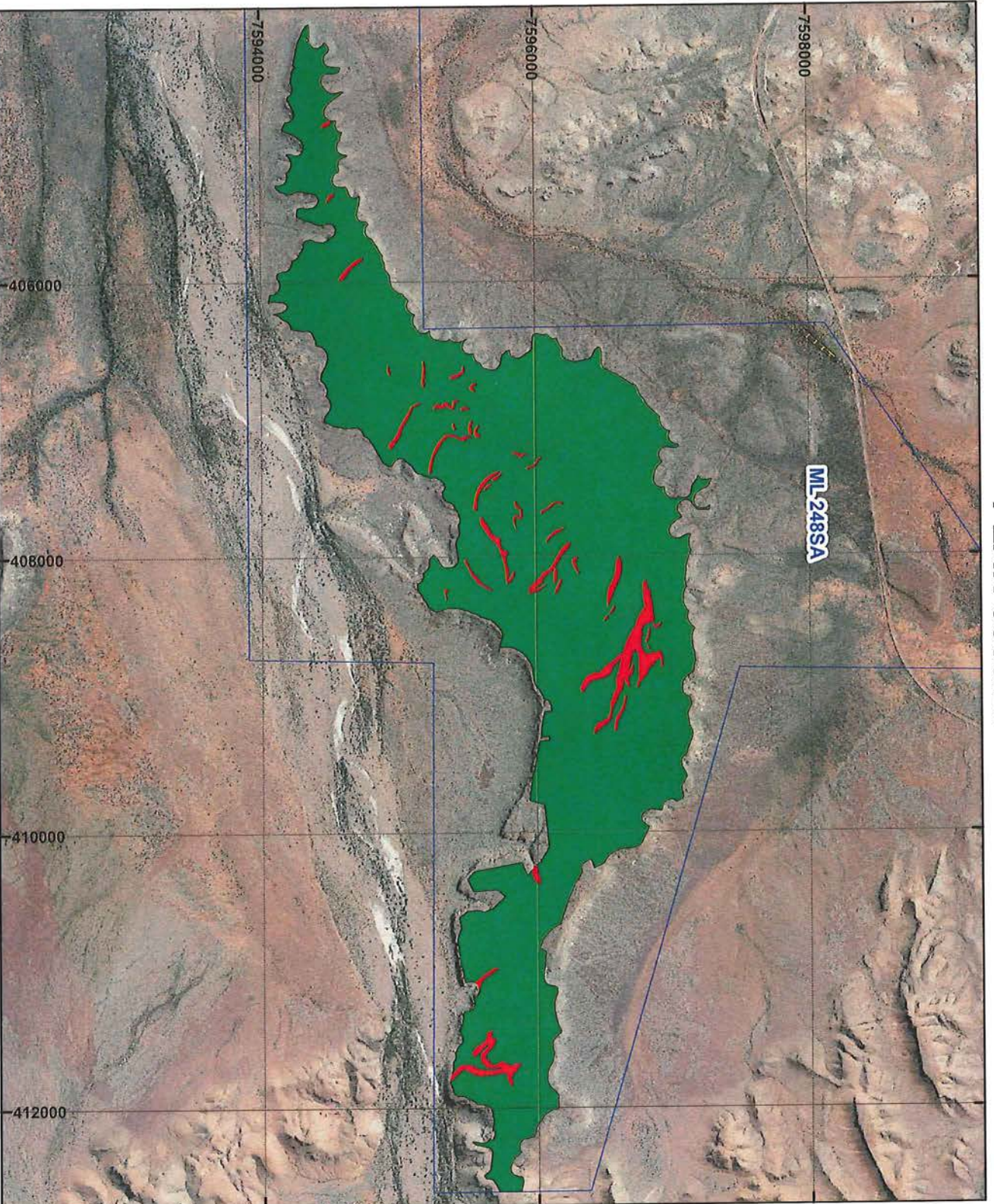


Geocentric Datum Australia 1994
 Note: the data in this map have not been projected. This may result in geometric distortion or measurement inaccuracies.
 M. Ark
 MARRIE LEYBOURNE Date 23/6 11
 Officers with delegated authority under Section 20 of the Environmental Protection Act 1986
 Information derived from this map should be confirmed with the data custodian acknowledged by the agency acronym in the legend.



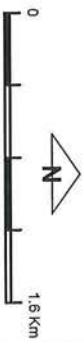
WA Government Copyright 2002

PLAN 6689/2F



LEGEND

- Mining Tenements
 - Clearing Instruments
 - Areas Approved to Clear
 - Areas Subject to Conditions
 - Areas Subject to Conditions
 - Areas Subject to Conditions
- SEAMLESS MOSAIC**



Geocentric Datum Australia 1994

Note: the data in this map have not been projected. This may result in geometric distortion or measurement inaccuracies.

M. LEBOURNE Date 23/6

MARVIN LEBOURNE
 Officer with delegated authority under Section 20 of the Environmental Protection Act 1988
 Information derived from this map should be confirmed with the data custodian acknowledged by the agency acronym in the legend.



WA Government Copyright 2002

116