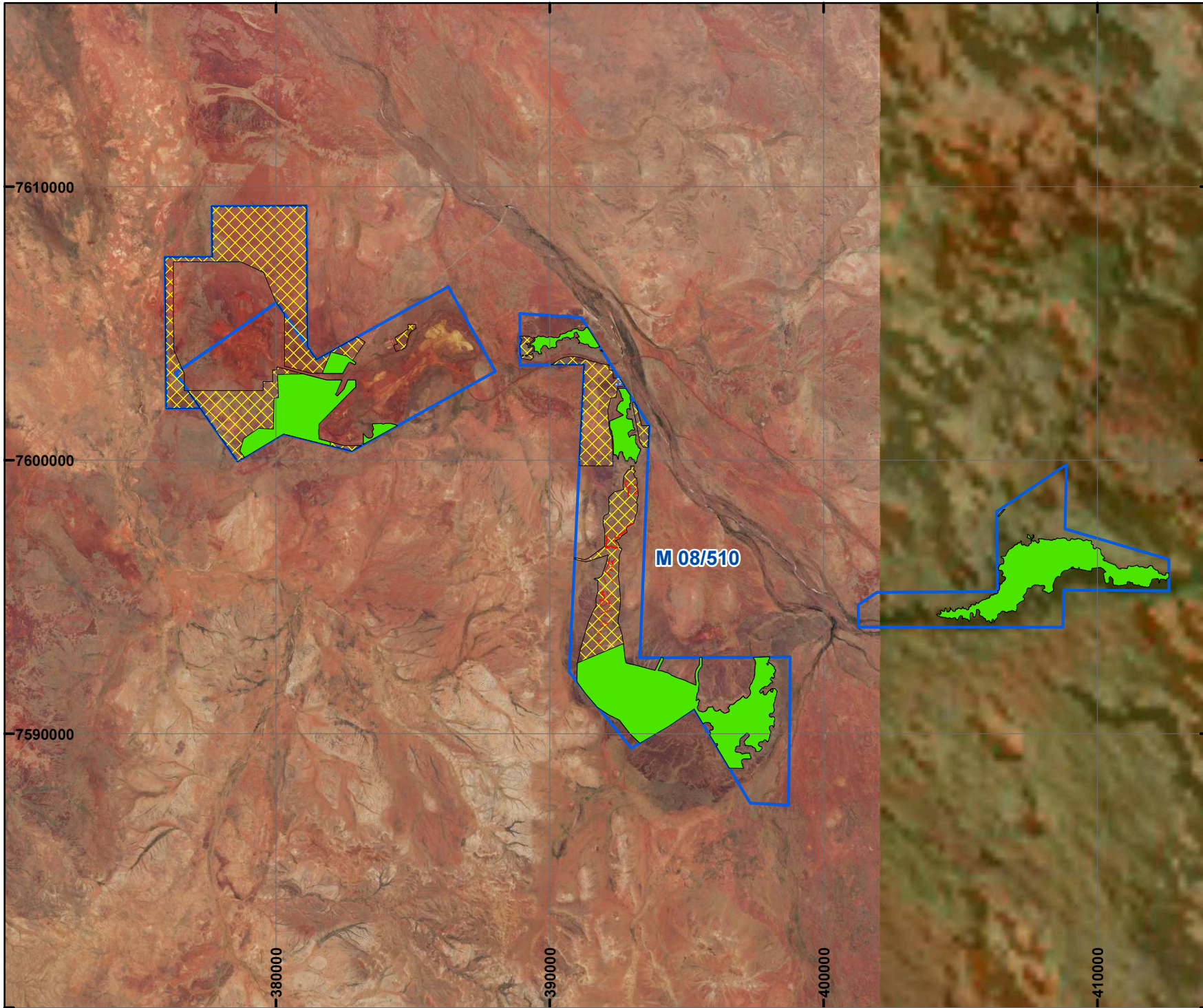


# PLAN 6689/5A



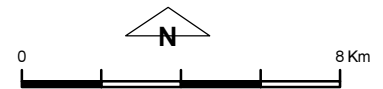
## LEGEND

 Mining Tenements

### Clearing Instruments

 Areas Approved to Clear

Orthophotography sourced from Landgate

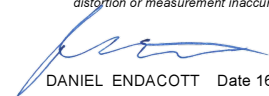


Scale 1:190,000

(Approximate when reproduced at A4)

Geocentric Datum Australia 1994

*Note: the data in this map have not been projected. This may result in geometric distortion or measurement inaccuracies.*



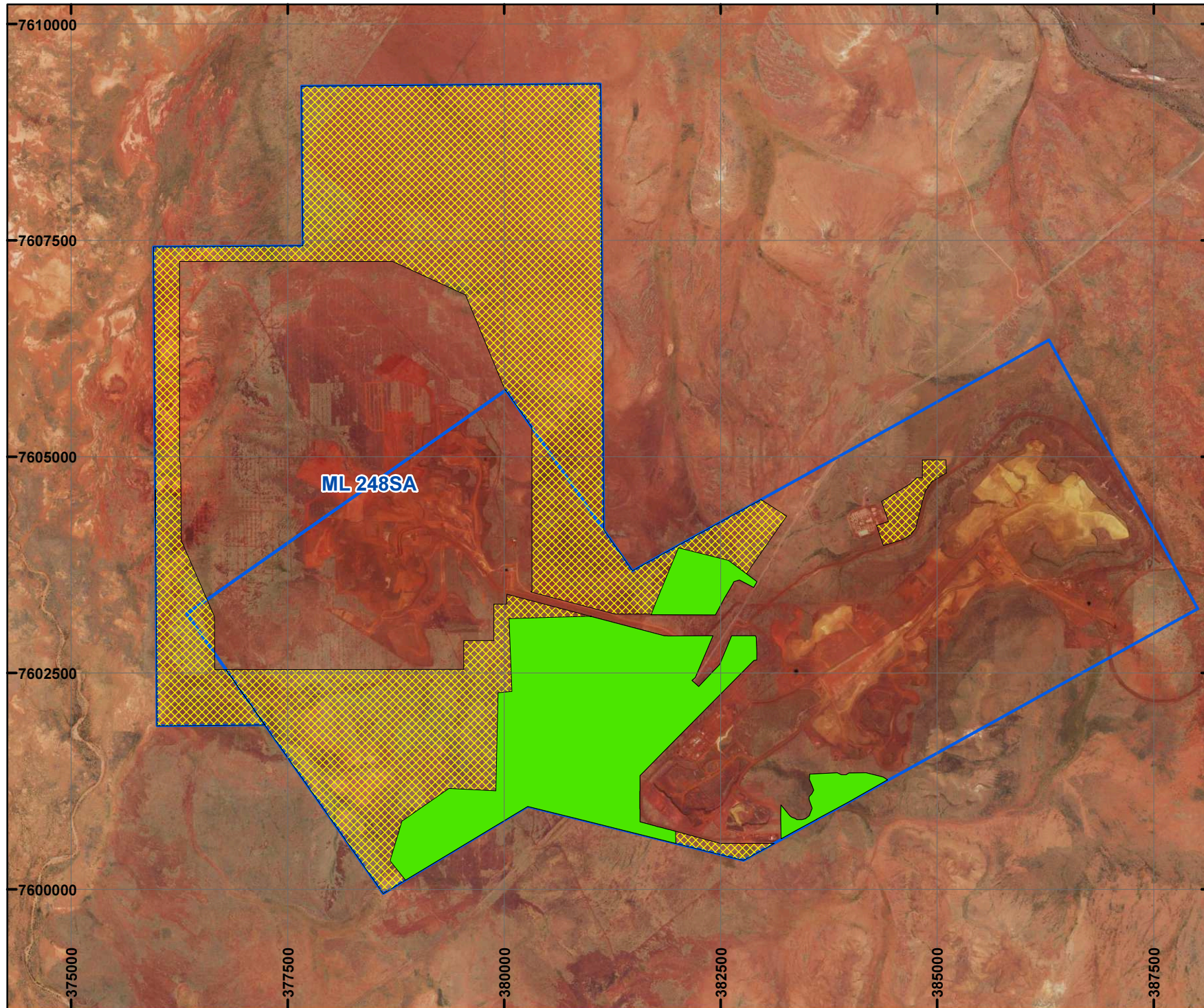
DANIEL ENDACOTT Date 16/08/2018  
Officer with delegated authority under Section 20 of  
the Environmental Protection Act 1986

Information derived from this map should be confirmed with the data custodian acknowledged by the agency acronym in the legend.



WA Crown Copyright 2002

# PLAN 6689/5B



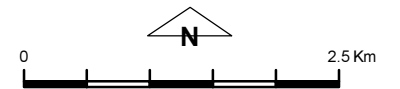
## LEGEND

Mining Tenements

### Clearing Instruments

- Areas Approved to Clear
- Areas Subject to Conditions
- Areas Subject to Conditions
- Areas Subject to Conditions

Orthophotography sourced from Landgate



Scale 1:60,000

(Approximate when reproduced at A4)

Geocentric Datum Australia 1994

Note: the data in this map have not been projected. This may result in geometric distortion or measurement inaccuracies.

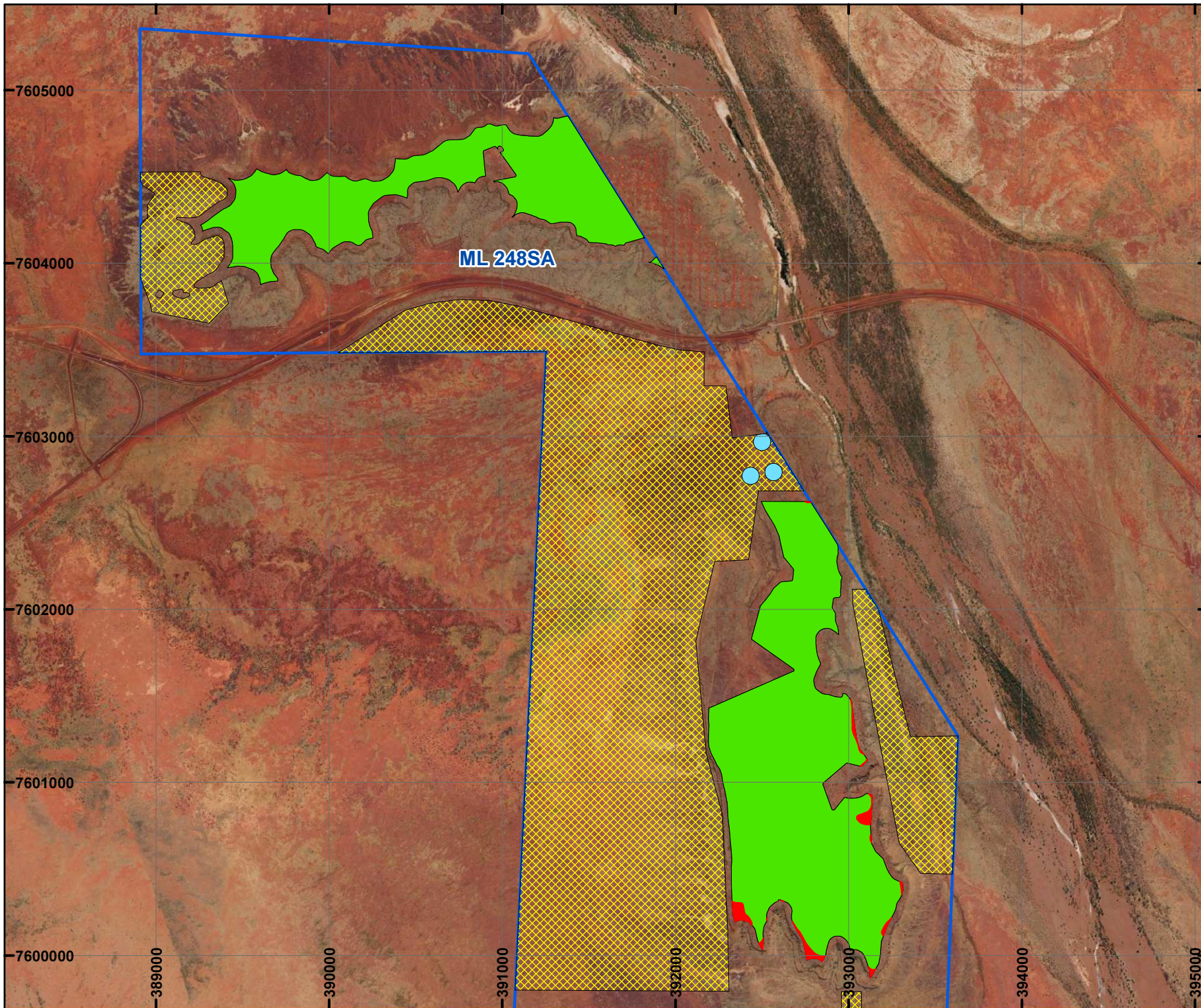
DANIEL ENDACOTT Date 16/08/2018  
Officer with delegated authority under Section 20 of the Environmental Protection Act 1986

Information derived from this map should be confirmed with the data custodian acknowledged by the agency acronym in the legend.



WA Crown Copyright 2002





# PLAN 6689/5C



## LEGEND

 Mining Tenements

### Clearing Instruments

-  Areas Approved to Clear
-  Areas Subject to Conditions
-  Areas Subject to Conditions
-  Areas Subject to Conditions

Orthophotography sourced from Landgate



Scale 1:30,000  
(Approximate when reproduced at A4)  
Geocentric Datum Australia 1994

*Note: the data in this map have not been projected. This may result in geometric distortion or measurement inaccuracies.*

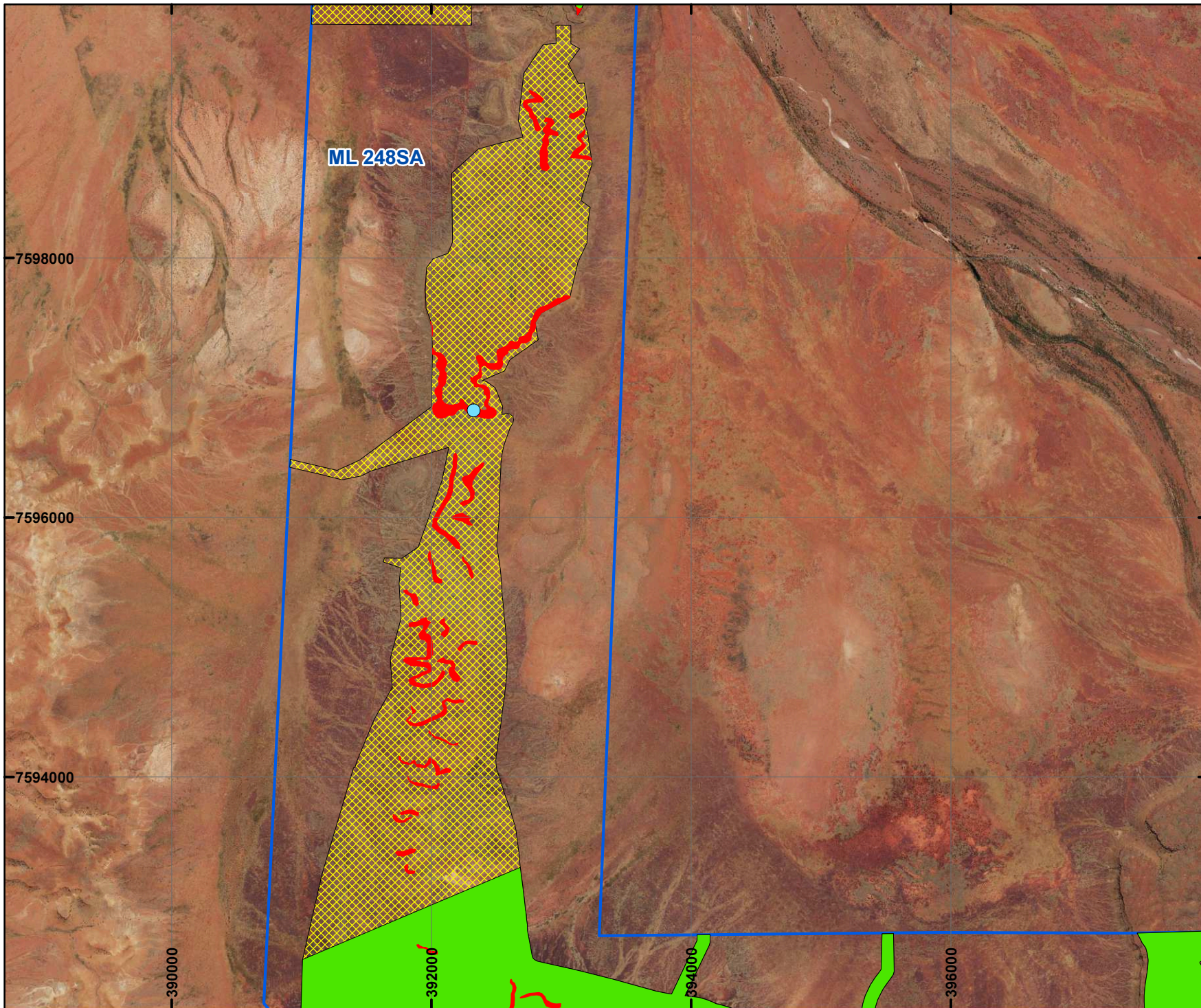
  
DANIEL ENDACOTT Date 16/08/2018  
Officer with delegated authority under Section 20 of the Environmental Protection Act 1986

Information derived from this map should be confirmed with the data custodian acknowledged by the agency acronym in the legend.



WA Crown Copyright 2002





# PLAN 6689/5D



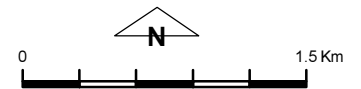
## LEGEND

 Mining Tenements

### Clearing Instruments

-  Areas Approved to Clear
-  Areas Subject to Conditions
-  Areas Subject to Conditions
-  Areas Subject to Conditions

Orthophotography sourced from Landgate



Scale 1:40,000  
(Approximate when reproduced at A4)  
Geocentric Datum Australia 1994

*Note: the data in this map have not been projected. This may result in geometric distortion or measurement inaccuracies.*

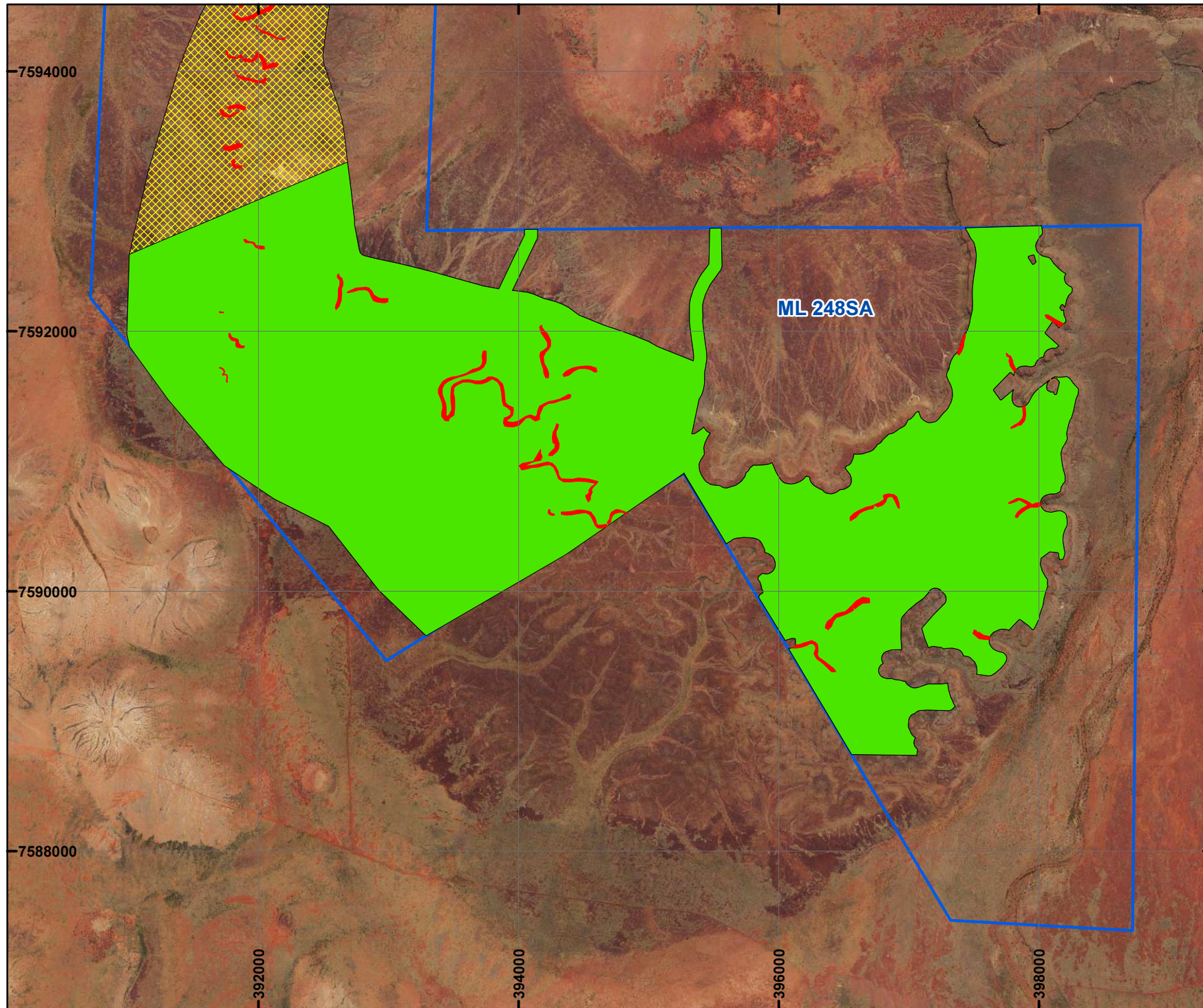
  
DANIEL ENDACOTT Date 16/08/2018  
Officer with delegated authority under Section 20 of the Environmental Protection Act 1986

Information derived from this map should be confirmed with the data custodian acknowledged by the agency acronym in the legend.



WA Crown Copyright 2002





# PLAN 6689/5E



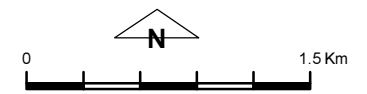
## LEGEND

 Mining Tenements

### Clearing Instruments

-  Areas Approved to Clear
-  Areas Subject to Conditions
-  Areas Subject to Conditions
-  Areas Subject to Conditions

Orthophotography sourced from Landgate



Scale 1:40,000  
(Approximate when reproduced at A4)

Geocentric Datum Australia 1994

*Note: the data in this map have not been projected. This may result in geometric distortion or measurement inaccuracies.*

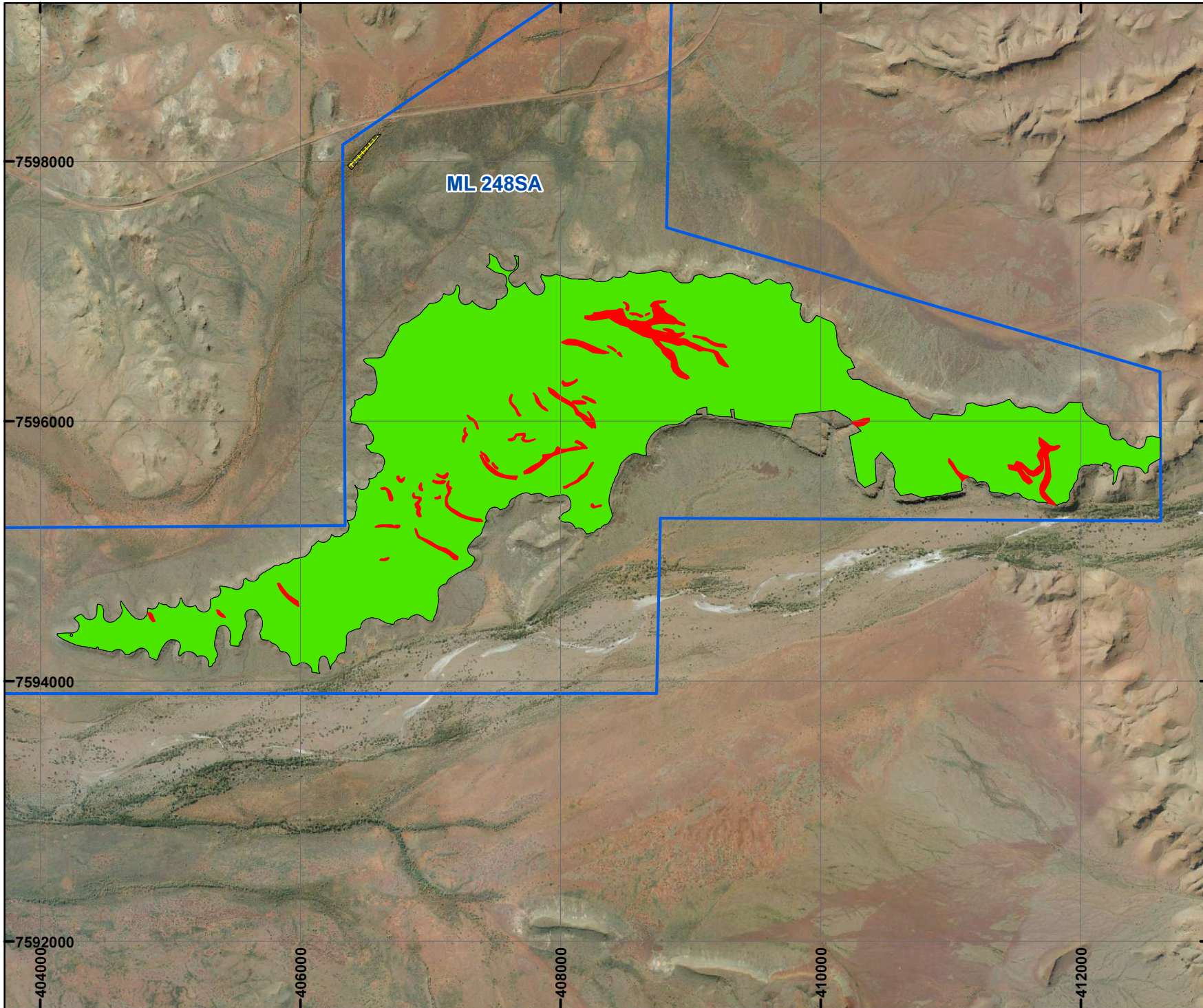
  
DANIEL ENDACOTT Date 16/08/2018  
Officer with delegated authority under Section 20 of the Environmental Protection Act 1986

Information derived from this map should be confirmed with the data custodian acknowledged by the agency acronym in the legend.



WA Crown Copyright 2002





# PLAN 6689/5F



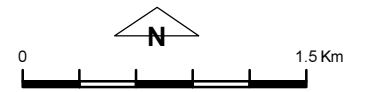
## LEGEND

 Mining Tenements

### Clearing Instruments

-  Areas Approved to Clear
-  Areas Subject to Conditions
-  Areas Subject to Conditions
-  Areas Subject to Conditions

Orthophotography sourced from Landgate

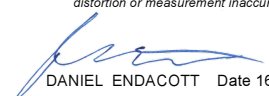


Scale 1:40,000

(Approximate when reproduced at A4)

Geocentric Datum Australia 1994

Note: the data in this map have not been projected. This may result in geometric distortion or measurement inaccuracies.

  
DANIEL ENDACOTT Date 16/08/2018  
Officer with delegated authority under Section 20 of  
the Environmental Protection Act 1986

Information derived from this map should be confirmed with the data custodian acknowledged by the agency acronym in the legend.



WA Crown Copyright 2002