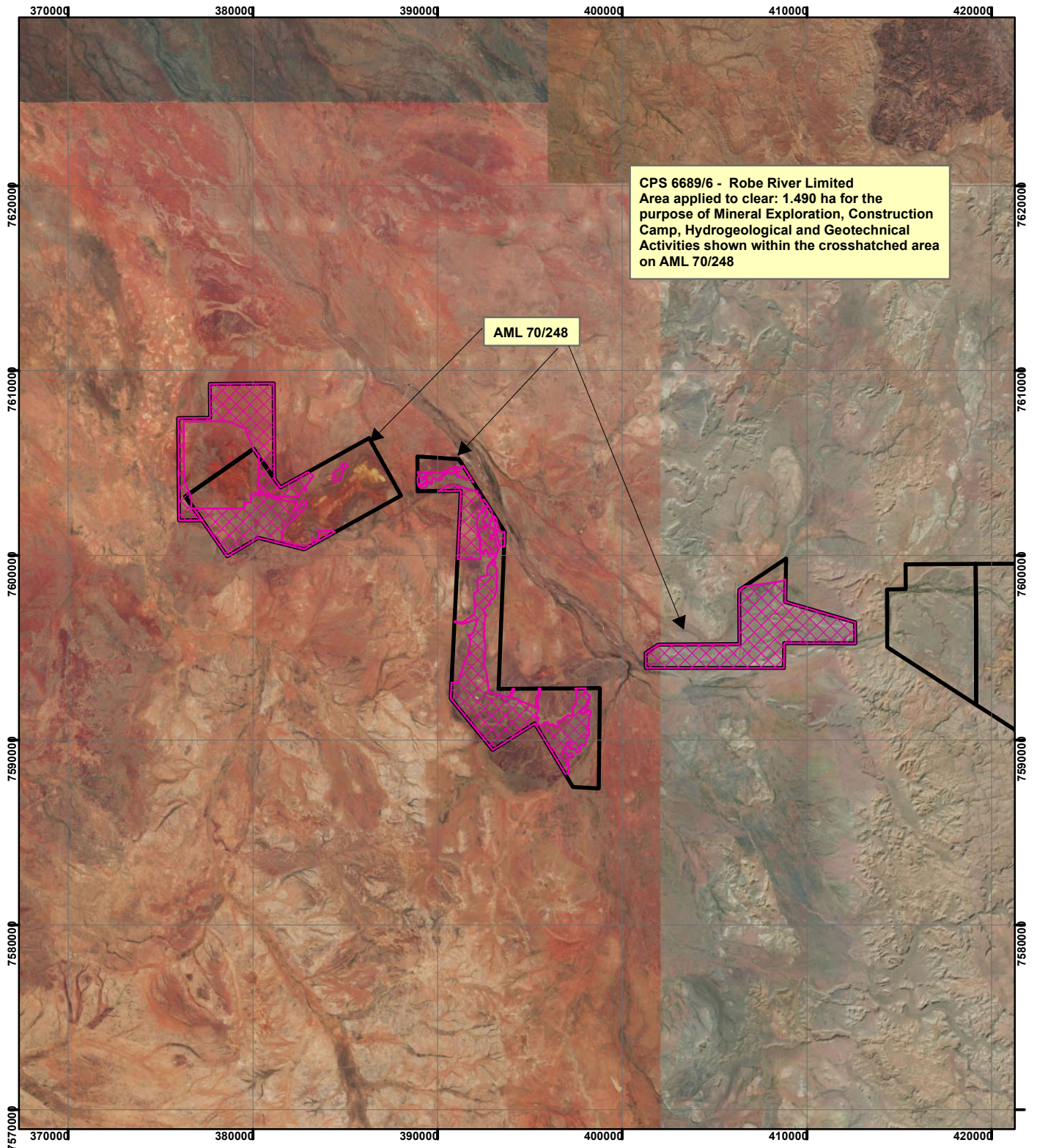



CPS 6689/6 - Robe River Limited



CPS 6689/6 - Robe River Limited
 Area applied to clear: 1.490 ha for the
 purpose of Mineral Exploration, Construction
 Camp, Hydrogeological and Geotechnical
 Activities shown within the crosshatched area
 on AML 70/248

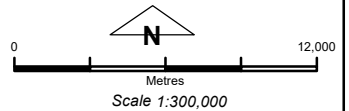
AML 70/248

Legend

 Clearing Instruments

TENID

 AML7000248



Geocentric Datum Australia 1994

Note: the data in this map have not been projected. This may result in geometric distortion or measurement inaccuracies.

..... Date

Officer with delegated authority under Section 20 of the Environmental Protection Act 1986

Information derived from this map should be confirmed with the data custodian acknowledged by the agency acronym in the legend.

