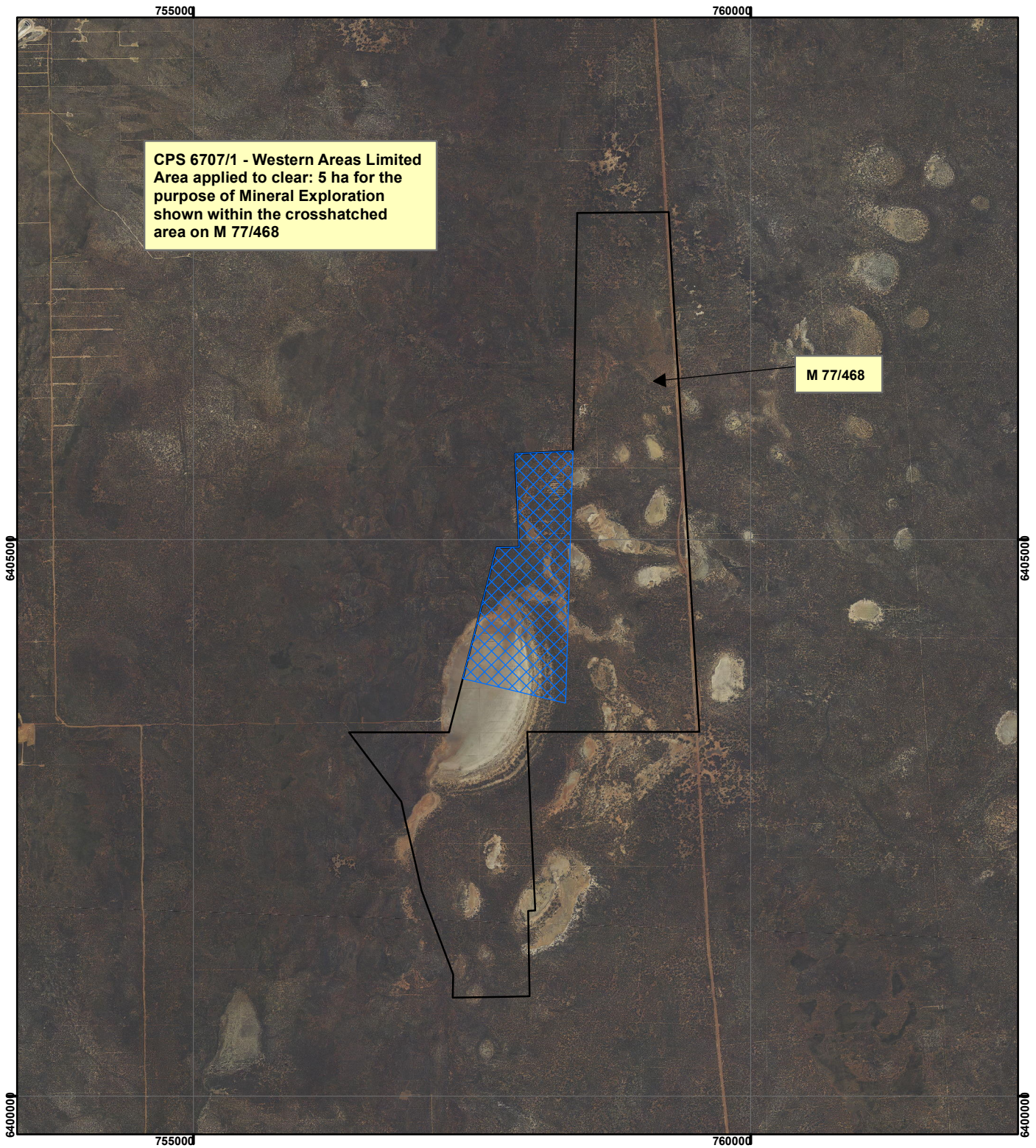



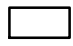
CPS 6707/1 - Western Areas Limited

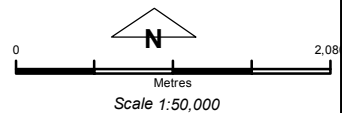


CPS 6707/1 - Western Areas Limited
Area applied to clear: 5 ha for the
purpose of Mineral Exploration
shown within the crosshatched
area on M 77/468

M 77/468

Legend

-  Clearing Instruments
-  Mining Tenements



Geocentric Datum Australia 1994
*Note: the data in this map have not been
projected. This may result in geometric
distortion or measurement inaccuracies.*

..... Date

Officer with delegated authority under Section 20 of
the Environmental Protection Act 1986

Information derived from this map should be
confirmed with the data custodian acknowledged
by the agency acronym in the legend.

