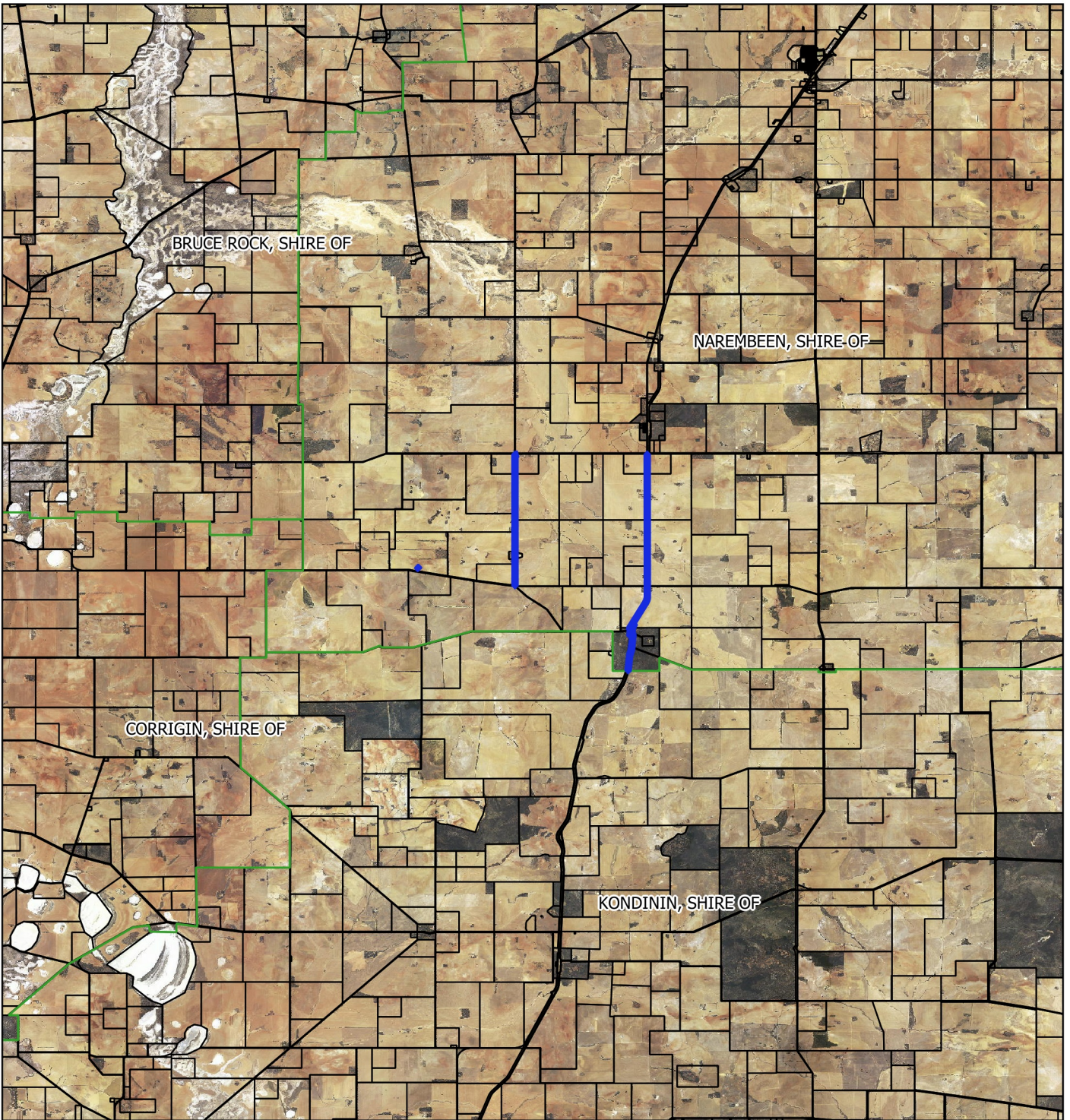


# CPS 6709/1 - Context Map



## Legend

-  Clearing Instruments Proposal
-  Roads
-  Cadastre
-  local\_gov\_authority
- Virtual Mosaic



1:150,000

MGA 94

Geocentric Datum of Australia 1994

.....Date.....

Officer with delegated authority under Section 20  
of the Environmental Protection Act 1986



GOVERNMENT OF  
WESTERN AUSTRALIA