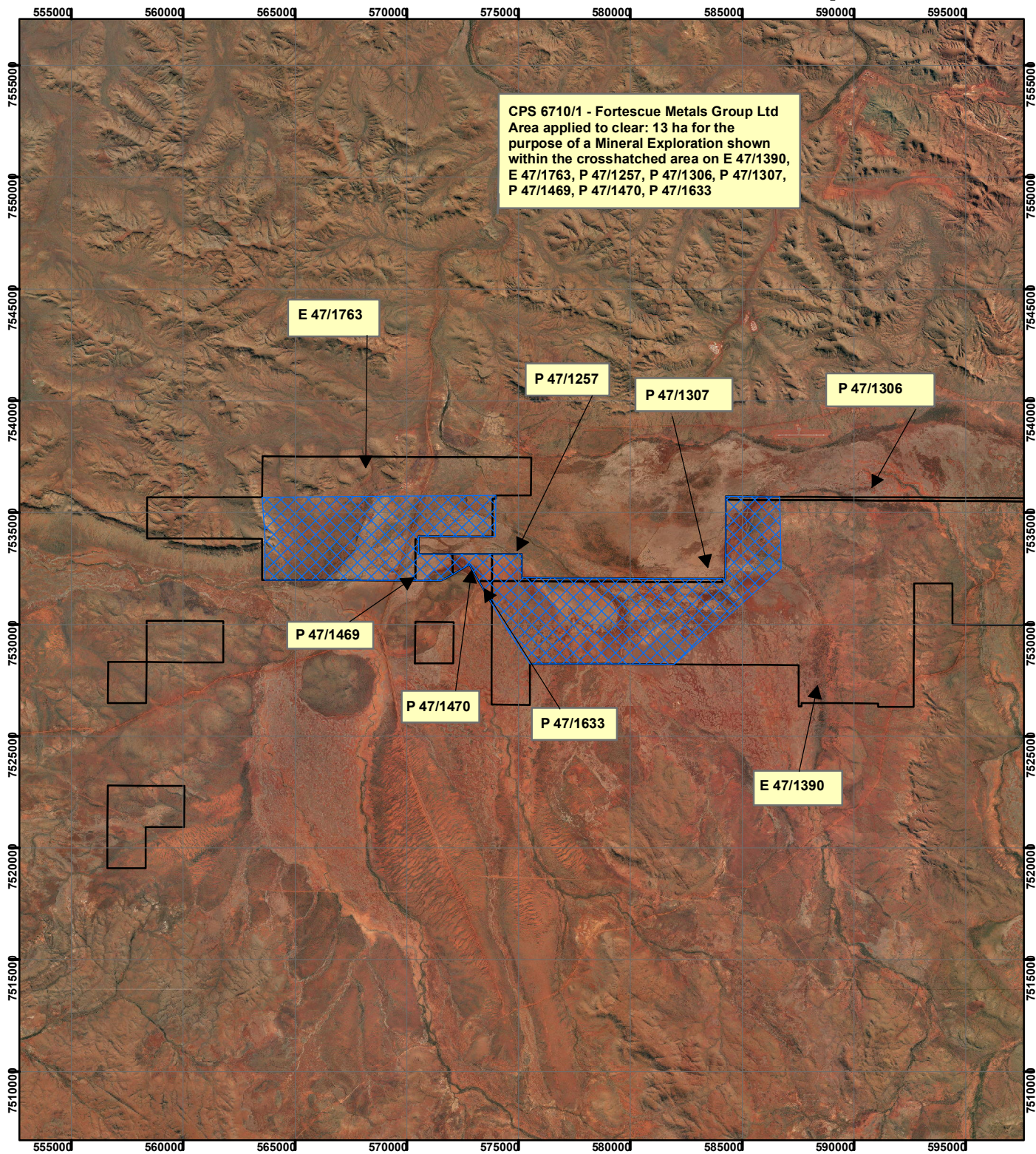

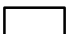
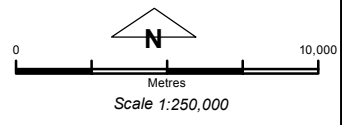


CPS 6710/1 - Fortescue Metals Group Ltd



CPS 6710/1 - Fortescue Metals Group Ltd
 Area applied to clear: 13 ha for the
 purpose of a Mineral Exploration shown
 within the crosshatched area on E 47/1390,
 E 47/1763, P 47/1257, P 47/1306, P 47/1307,
 P 47/1469, P 47/1470, P 47/1633

- Legend**
-  Clearing Instruments
 - Mining Tenements**
 -  Mining Tenements



Geocentric Datum Australia 1994
 Note: the data in this map have not been
 projected. This may result in geometric
 distortion or measurement inaccuracies.

..... Date

Officer with delegated authority under Section 20 of
 the Environmental Protection Act 1986

Information derived from this map should be
 confirmed with the data custodian acknowledged
 by the agency acronym in the legend.

