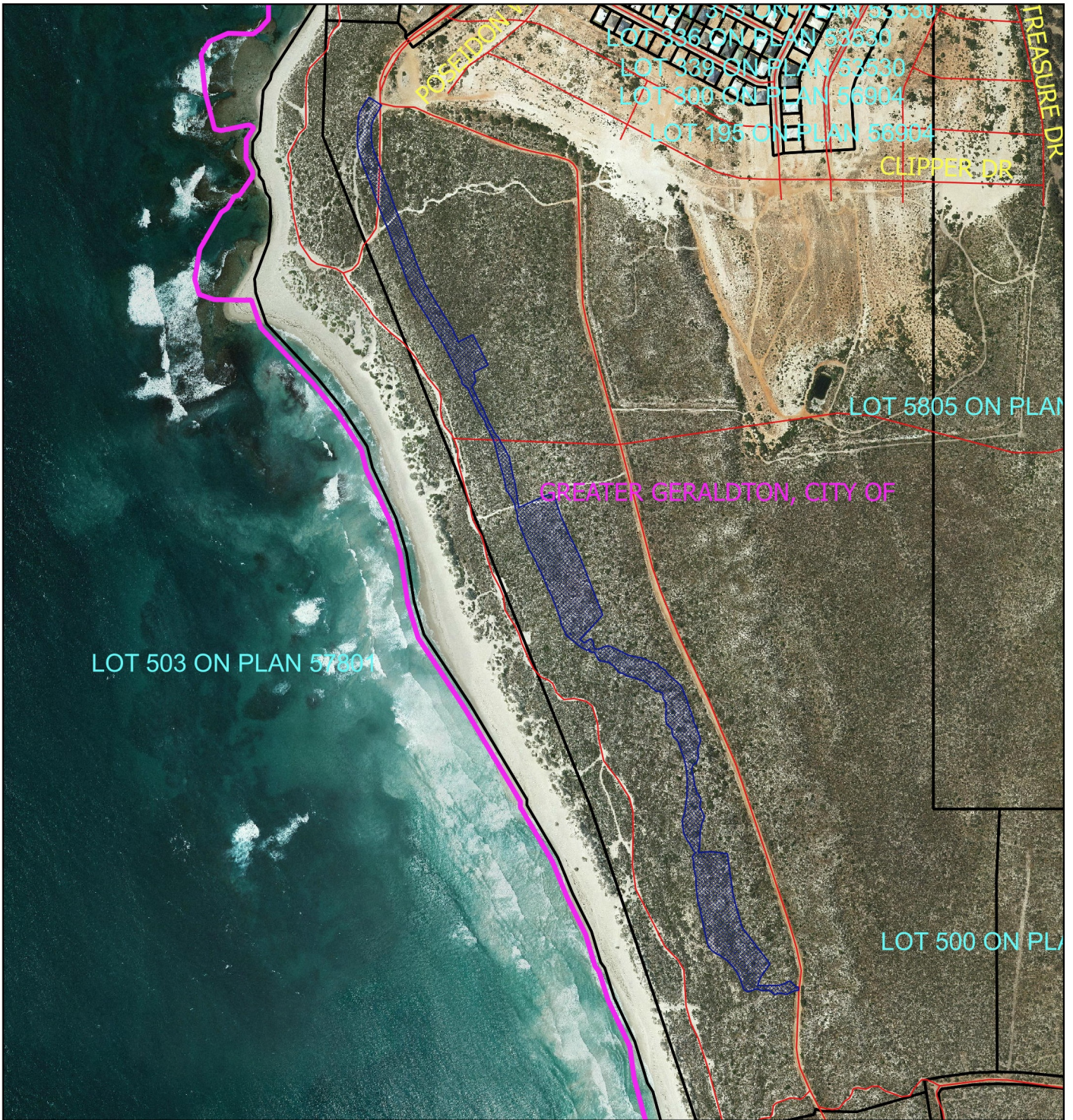



# CPS 6769/1 - Map



**Legend**

-  Iga
-  Roads
-  Cadastre
- Virtual Mosaic
-  Clearing Instruments Proposal



1:10,000

MGA 94  
Geocentric Datum of Australia 1994

.....Date.....

Officer with delegated authority under Section 20  
of the Environmental Protection Act 1986



GOVERNMENT OF  
WESTERN AUSTRALIA