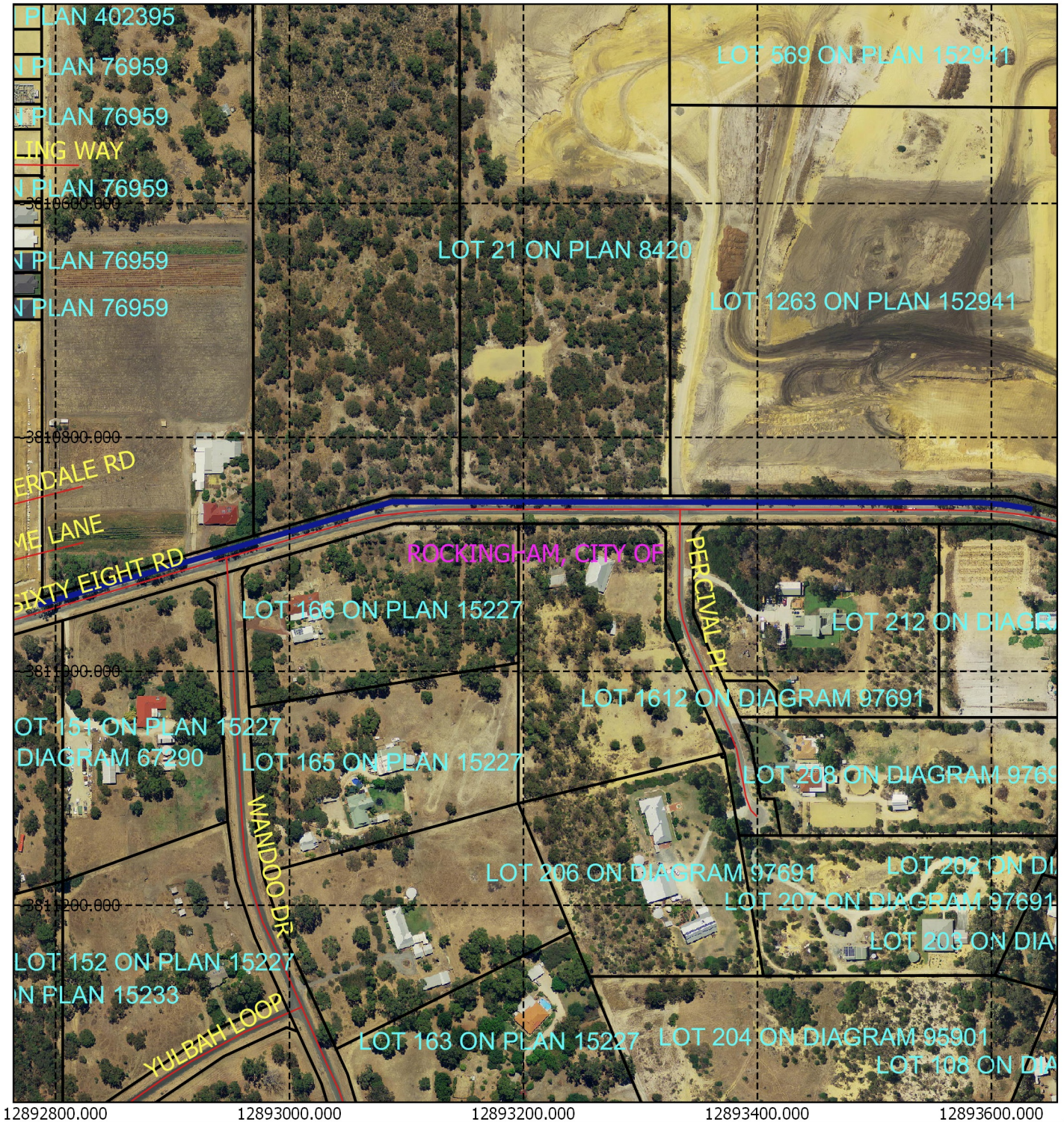






CPS 6783/1 - Map



Legend

-  Iga
 -  Roads
 -  Cadastre
 -  Clearing Instruments Proposal
- Virtual Mosaic



1:4,849

MGA 94

Geocentric Datum of Australia 1994

.....Date.....

Officer with delegated authority under Section 20
 of the Environmental Protection Act 1986



GOVERNMENT OF
 WESTERN AUSTRALIA