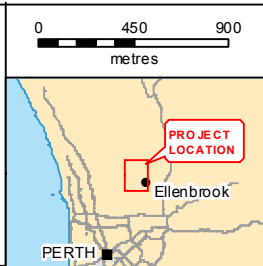


Legend

- Roads
- Construction Footprint Area/ Project Area, 28.4 ha
- Outlet Pipe
- Inlet Pipe

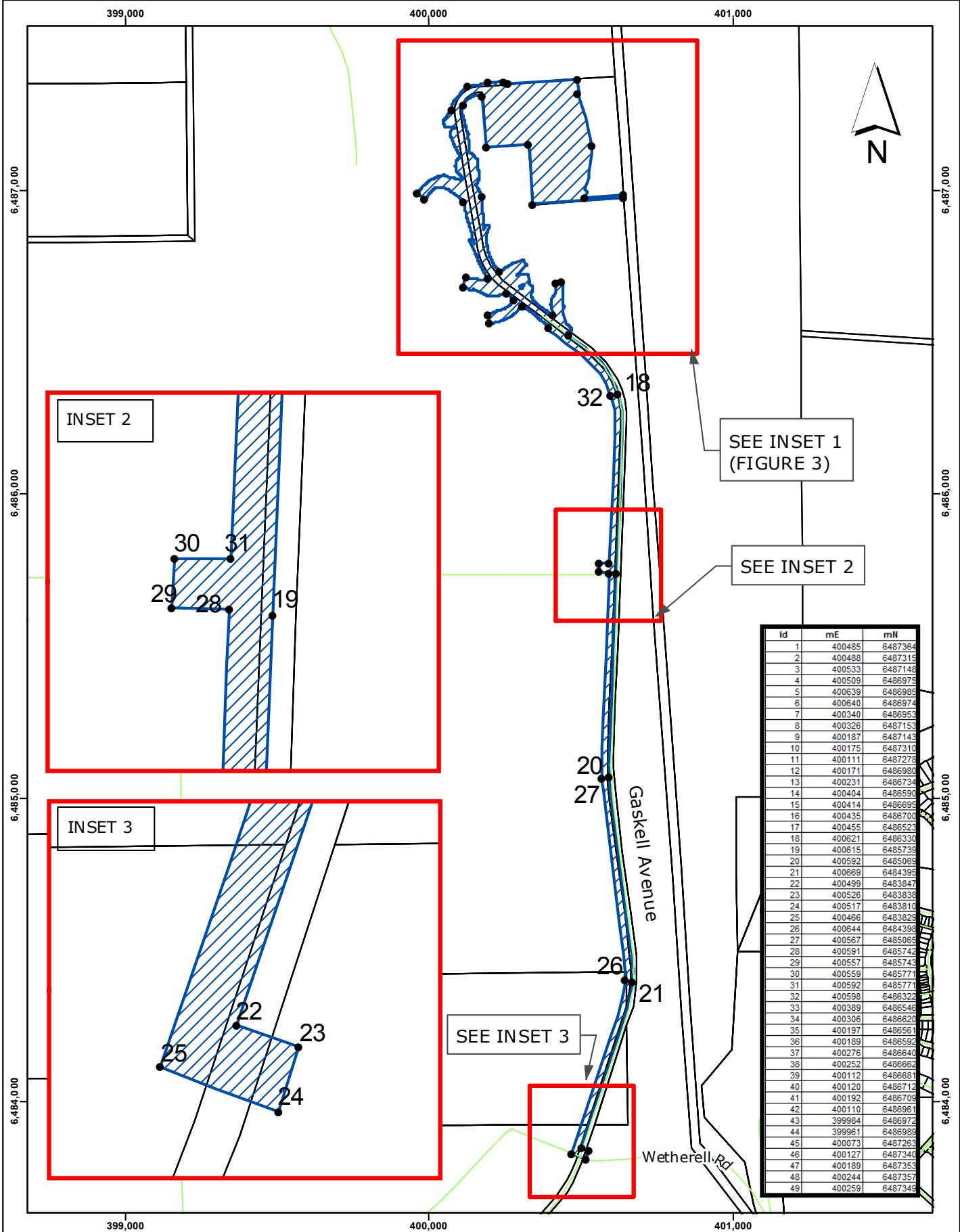


AUTHOR: JACKSON0	DATE: 21/01/2015
GROUP: EIA & Approvals Section	PROJECT: ERWS Project (C-W00179)



Ellenbrook Reliable Water Storage Project (C-W00179)
Figure 1 - Site Locality

The information contained herein is the exclusive property of the water corporation and its respective copyright owners. It is subject to ongoing review and should be viewed in conjunction with the associated materials. No part of this production should be copied, modified, reproduced or published in any form other than that intended by the author.



Id	mE	mN
1	400485	6487364
2	400488	6487315
3	400533	6487148
4	400509	6486975
5	400639	6486985
6	400640	6486974
7	400340	6486953
8	400326	6487153
9	400187	6487143
10	400175	6487310
11	400111	6487278
12	400171	6486980
13	400231	6486734
14	400404	6486590
15	400414	6486695
16	400435	6486700
17	400455	6486523
18	400621	6486330
19	400615	6485739
20	400592	6485069
21	400669	6484395
22	400499	6483847
23	400526	6483838
24	400517	6483810
25	400466	6483829
26	400644	6484398
27	400567	6485065
28	400591	6485742
29	400557	6485743
30	400559	6485771
31	400592	6485771
32	400598	6486322
33	400389	6486546
34	400306	6486620
35	400197	6486581
36	400189	6486592
37	400276	6486640
38	400252	6486662
39	400112	6486681
40	400120	6486712
41	400192	6486705
42	400110	6486961
43	399984	6486972
44	399961	6486989
45	400073	6487263
46	400127	6487340
47	400189	6487353
48	400244	6487357
49	400259	6487349

LEGEND

- Cadastral Boundary
- Construction Footprint
- Area/ Project Area, 28.4 ha
- Project Area Coordinates

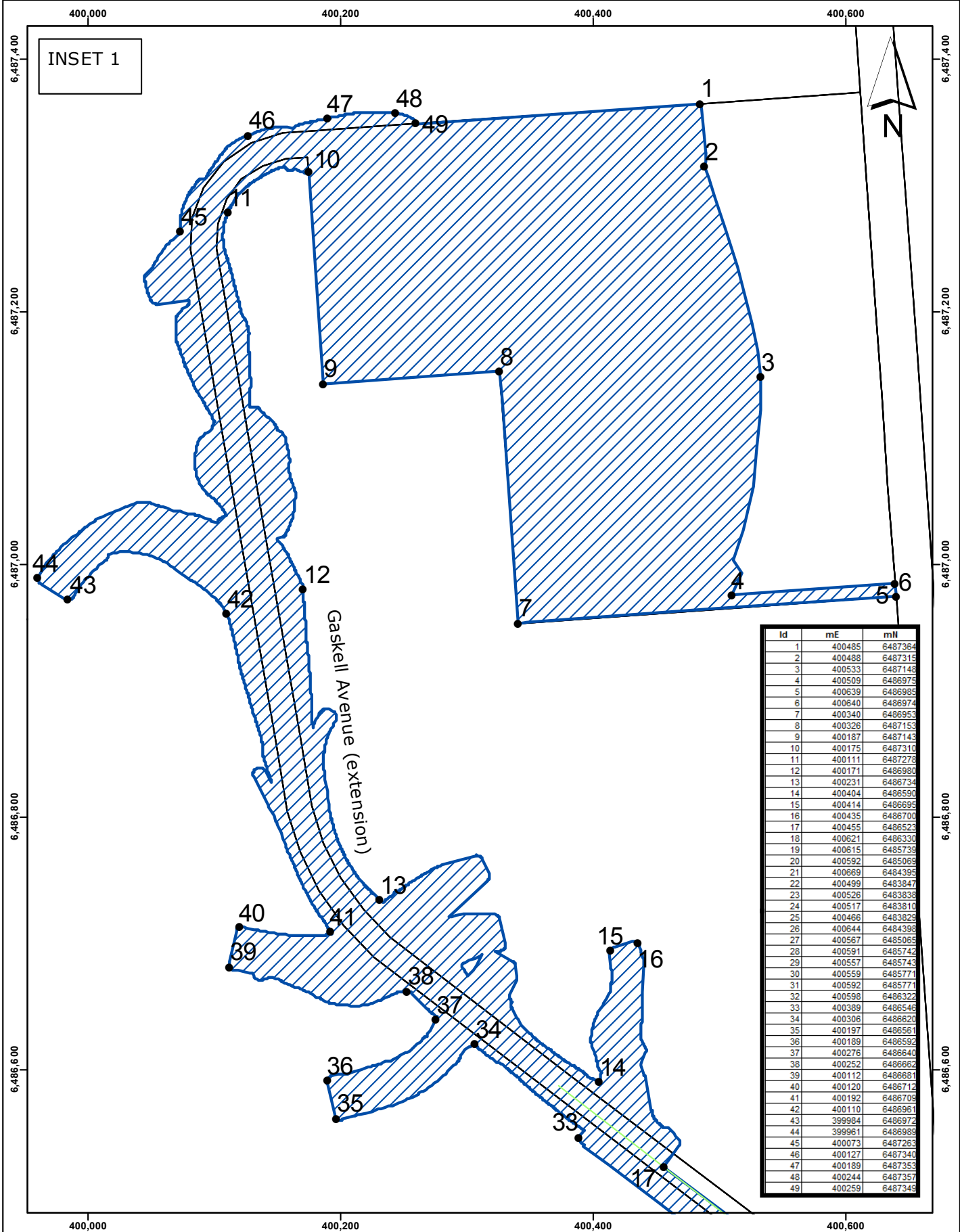
Coordinate System: GDA 1994 MGA Zone 50 Vertical Datum: AHD
 The information contained here is the exclusive property of the Water Corporation and the respective copyright owners. It is subject to ongoing review and should be viewed in conjunction with the associated materials. No part of this production should be copied, modified, reproduced or published in any form or by any means intended by the author.

0 200 400 metres

AUTHOR: JACKSON0 DATE: 16/09/2015
 GROUP: EIA & Approvals Section PROJECT: ERWS Project (C-W00179)

WATER CORPORATION
 Ellenbrook Reliable Water Storage Project (C-W00179)
 Figure 2 - Project Coordinates (With INSET 2 and 3)

File: S:\AA AEnvironment Branch\Environment\Approvals\S38\CW00179 and CW00128 - Ellenbrook Tanks and Inlet outlet\04. Part IV DER (EP Act) Clearing Permit Application\Mapping\Figure 2 Coordinates Part

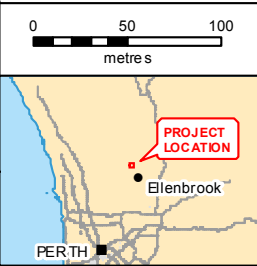


Id	mE	mN
1	400485	6487364
2	400488	6487315
3	400533	6487148
4	400509	6486975
5	400639	6486985
6	400640	6486974
7	400340	6486953
8	400326	6487153
9	400187	6487143
10	400175	6487310
11	400111	6487278
12	400171	6486980
13	400231	6486734
14	400404	6486590
15	400414	6486695
16	400435	6486700
17	400455	6486523
18	400621	6486330
19	400615	6485739
20	400592	6485069
21	400669	6484395
22	400499	6483847
23	400526	6483838
24	400517	6483810
25	400466	6483829
26	400644	6484398
27	400567	6485065
28	400591	6485742
29	400557	6485743
30	400559	6485771
31	400592	6485771
32	400598	6486322
33	400389	6486546
34	400306	6486620
35	400197	6486561
36	400189	6486592
37	400276	6486640
38	400252	6486662
39	400112	6486681
40	400120	6486712
41	400192	6486709
42	400110	6486961
43	399984	6486972
44	399961	6486989
45	400073	6487263
46	400127	6487340
47	400189	6487353
48	400244	6487357
49	400259	6487349

LEGEND

- Cadastral Boundary
- Construction Footprint
- Area/ Project Area, 28.4 ha
- Project Area Coordinates

Coordinate System: GDA 1994 MGA Zone 50 Vertical Datum: AHD
The information contained herein is the exclusive property of the Water Corporation and the respective copyright owners. It is subject to ongoing review and should be viewed in conjunction with the associated materials. No part of this production should be copied, modified, reproduced or published in any form other than that intended by the author.



AUTHOR: JACKSON0 DATE: 16092015

GROUP: EIA & Approvals Section PROJECT: ERWS Project (C-W00179)

WATER CORPORATION

Ellenbrook Reliable Water Storage Project (C-W00179)

Figure 3 - Project Coordinates

INSET 1



6,487,400

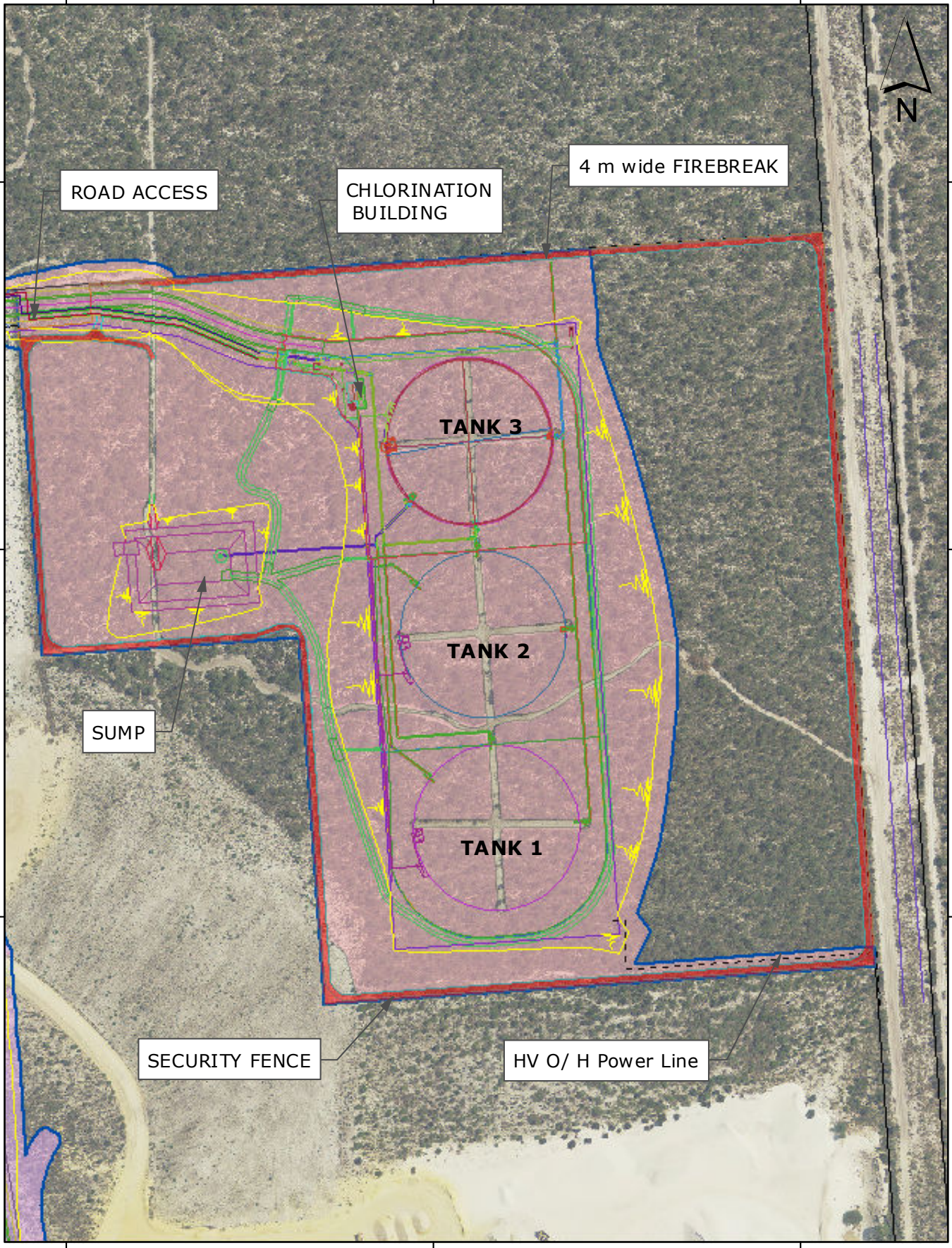
6,487,400

6,487,200

6,487,200

6,487,000

6,487,000



400,200

400,400

400,600

LEGEND	
	Cadastral Boundary
	Construction Footprint Area/ Project Area, 28.4 ha
	Outlet Pipe
	Inlet Pipe
	Batters
Proposed Clearing, 16.5 ha	
Veg etation Type	
	Banksia Low Open Forest
	Isolated Tree
	Pine Plantation
	Pine, Melaleuca and Eucalyptus Open Planted Woodland
	Revegetation



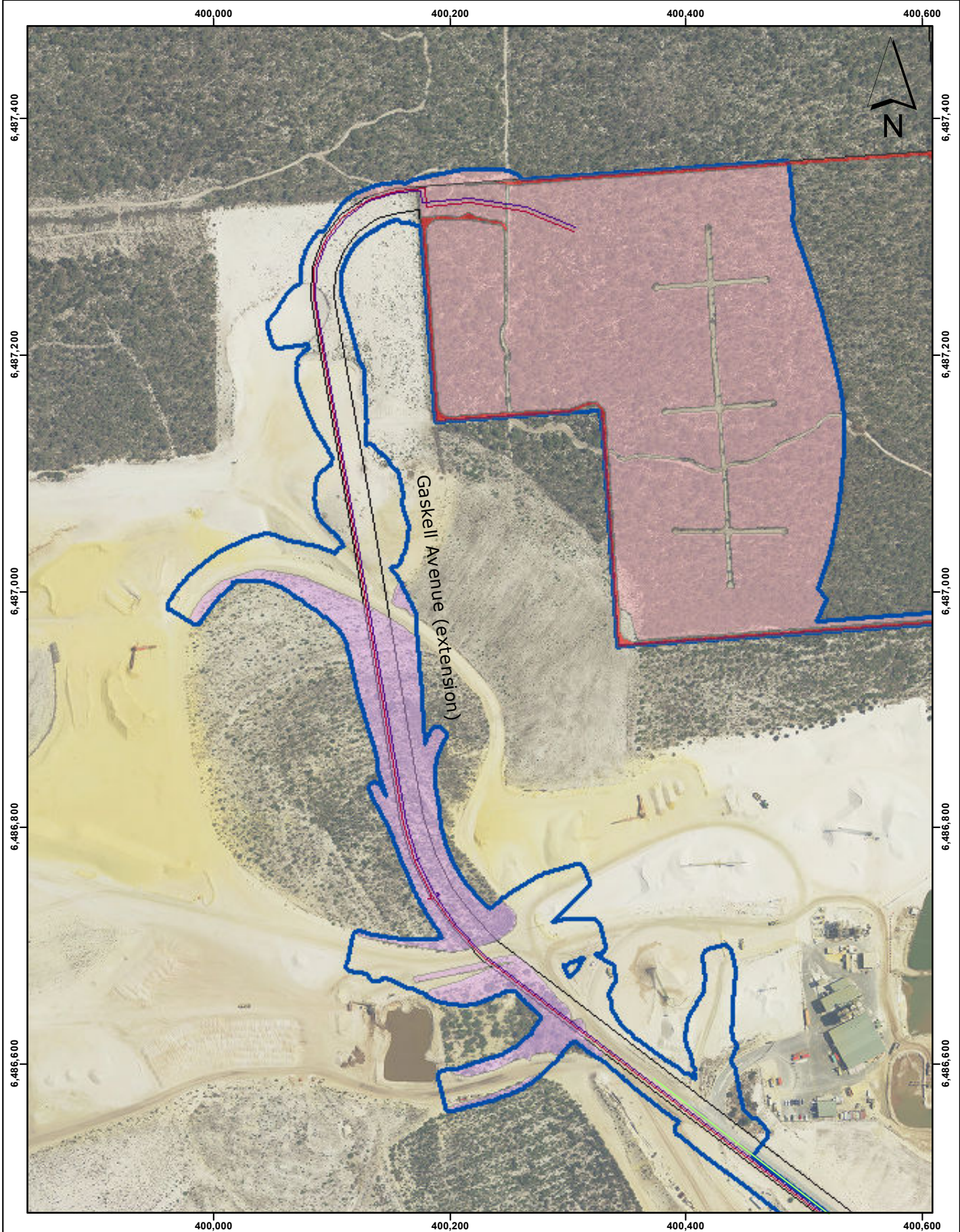
AUTHOR: JAC KSON0	DATE: 16092015
GROUP: EIA & Approvals Section	PROJECT: ERWS Project (C-W00179)

WATER CORPORATION

Ellenbrook Reliable Water Storage Project (C-W00179)

Figure 4 - Proposed Clearing and Infrastructure Layout (TANK SITE)

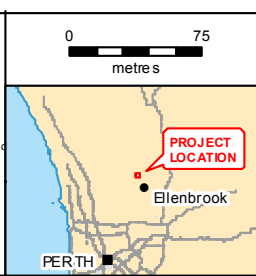
Coordinate System: GDA 1994 MGA Zone 50 Vertical Datum: AHD
 The information contained herein is the exclusive property of the Water Corporation and the respective copyright owners. It is subject to ongoing review and should be viewed in conjunction with the associated materials. No part of this production should be copied, modified, reproduced or published in any form other than that intended by the author.



LEGEND

Cadastral Boundary	Proposed Clearing, 16.5 ha
Construction Footprint Area/ Project Area, 28.4 ha	Vegetation Type
Outlet Pipe	Banksia Low Open Forest
Inlet Pipe	Isolated Tree
Road Design	Pine Plantation
Batters	Pine, Melaleuca and Eucalyptus Open Planted Woodland
	Revegetation

Coordinate System: GDA 1994 MGA Zone 50 Vertical Datum: AHD
 The information contained here is the exclusive property of the Water Corporation and the respective copyright owners. It is subject to ongoing review and should be viewed in conjunction with the associated materials. No part of this production should be copied, modified, reproduced or published in any form other than that intended by the author.

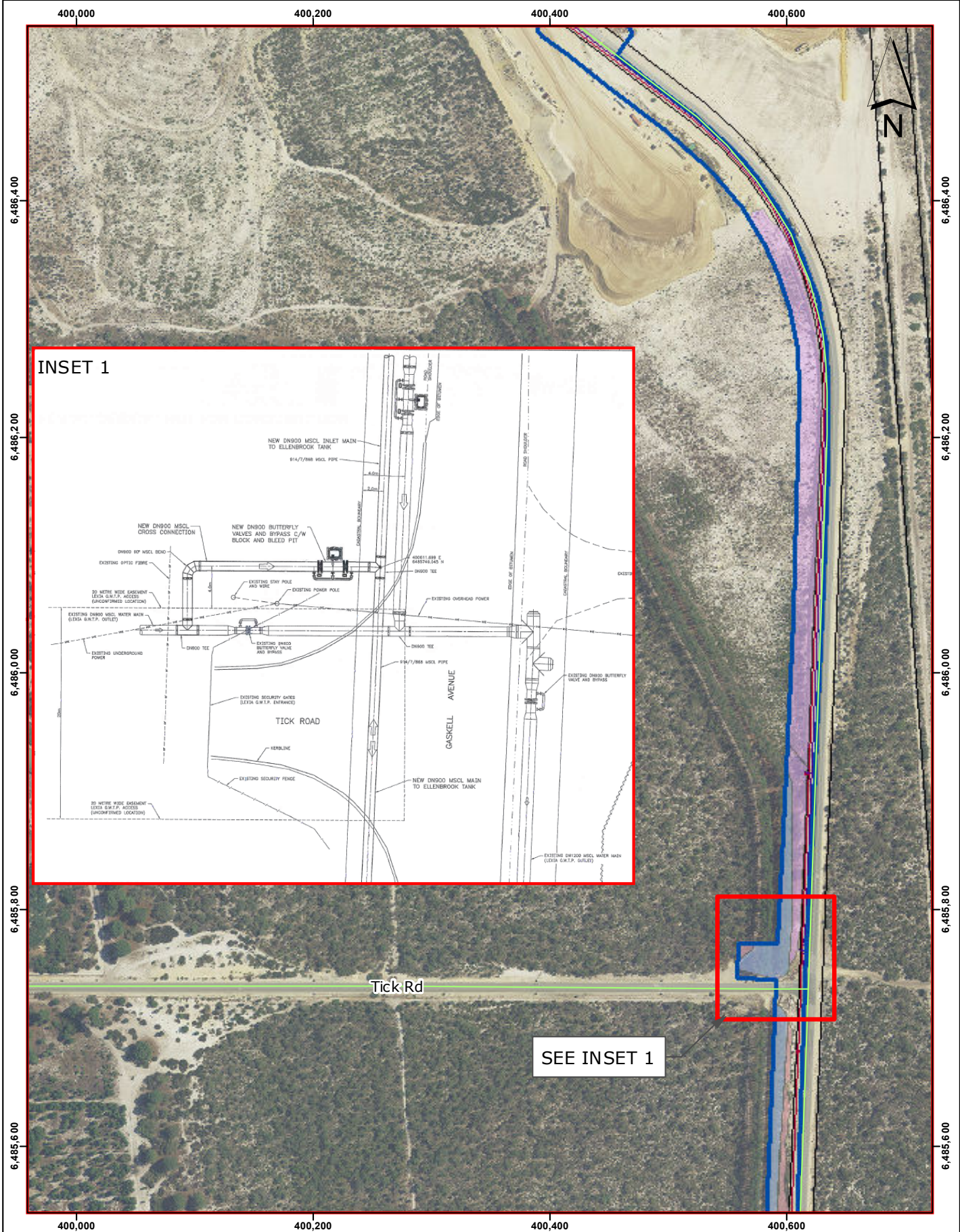


AUTHOR: JAC KSON0	DATE: 16/09/2015
GROUP: EIA & Approvals Section	PROJECT: ERWS Project (C-W00179)

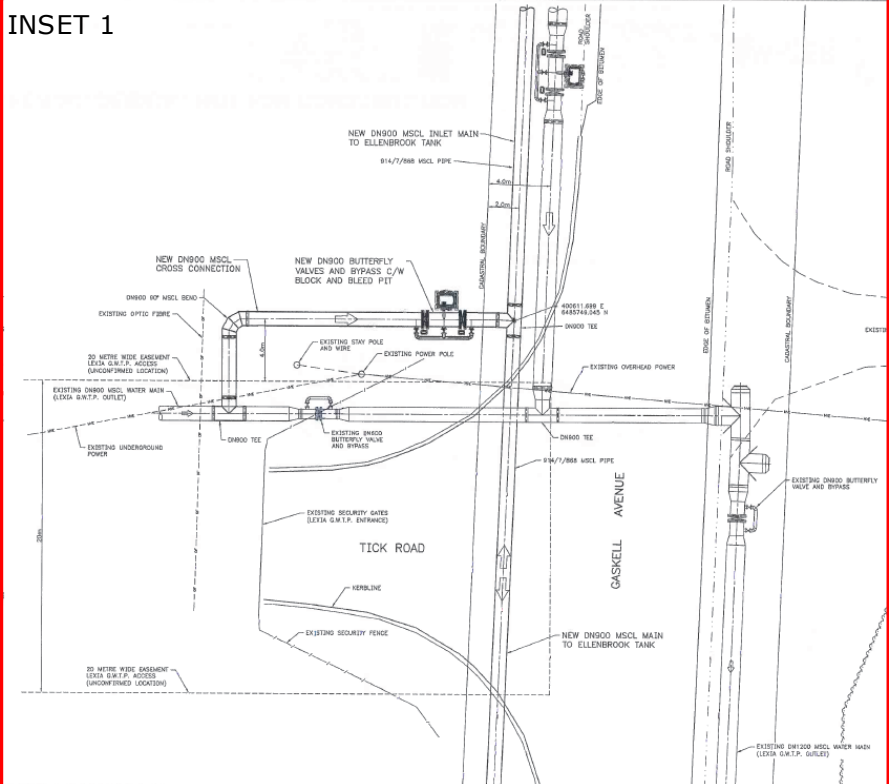
WATER CORPORATION

Ellenbrook Reliable Water Storage Project (C-W00179)

Figure 5 - Proposed Clearing and Infrastructure Layout (GASKELL AVE EXTENSION)



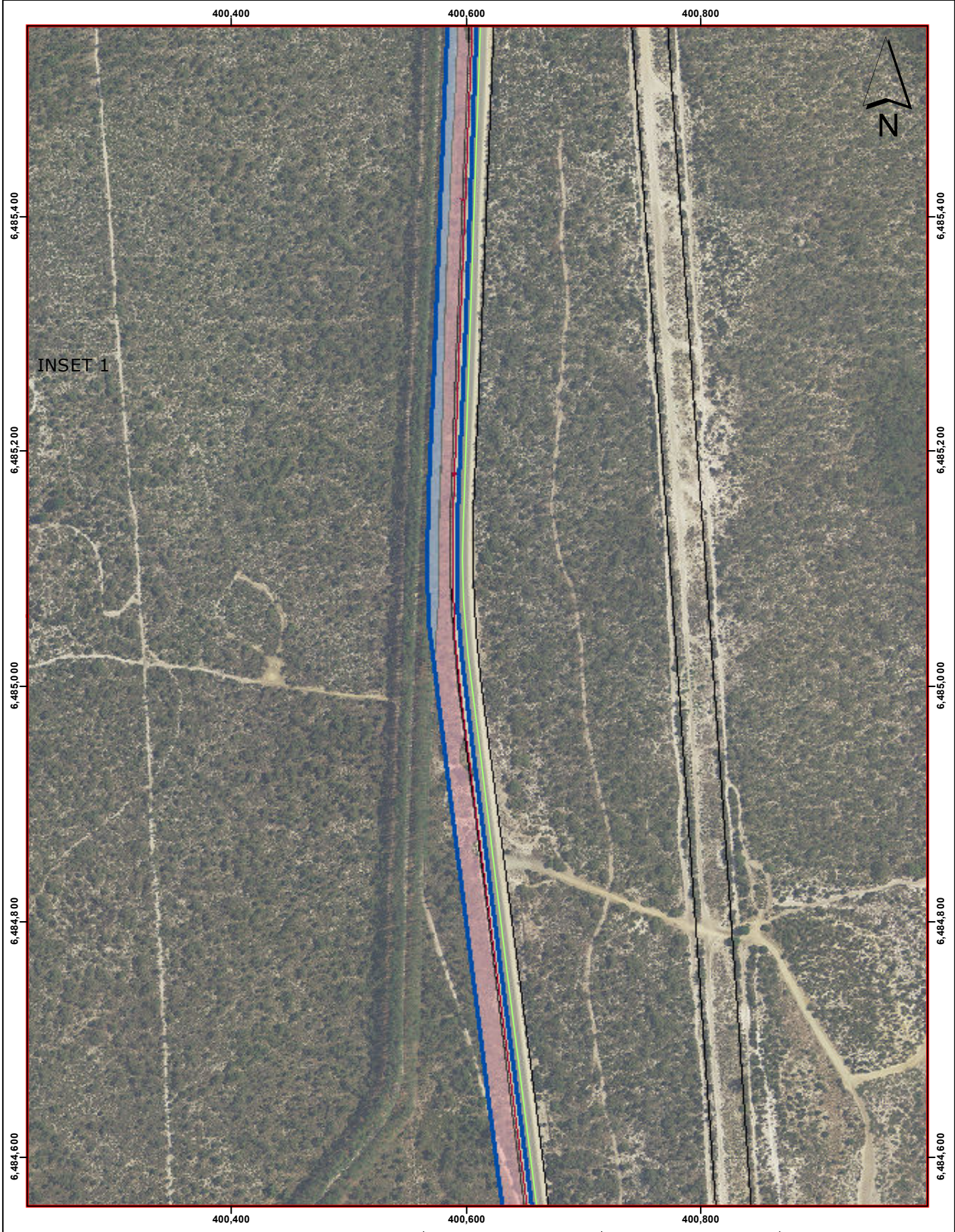
INSET 1



Tick Rd

SEE INSET 1

LEGEND Cadastral Boundary Construction Footprint Area/Project Area, 28.4 ha Outlet Pipe Inlet Pipe		Proposed Clearing, 16.5 ha Vegetation Type Banksia Low Open Forest Isolated Tree Pine Plantation Pine, Melaleuca and Eucalyptus Open Planted Woodland Revegetation		0 75 metres 		AUTHOR: JAC KSON0 GROUP: EIA & Approvals Section 		DATE: 1 6 0 9 2 0 1 5 PROJECT: ERWS Project (C-W00179)	
Coordinate System: GDA 1994 MGA Zone 50 Vertical Datum: AHD The information contained herein is the exclusive property of the Water Corporation and the respective copyright owners. It is subject to ongoing review and should be viewed in conjunction with the associated materials. No part of this production should be copied, modified, reproduced or put into any form other than that intended by the author.				Ellenbrook Reliable Water Storage Project (C-W00179) Figure 6 - Proposed Clearing and Infrastructure Layout					



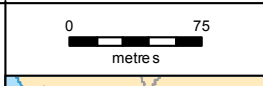
LEGEND

	Cadastral Boundary
	Construction Footprint Area
	Project Area, 28.4 ha
	Inlet Pipe

Proposed Clearing, 16.5 ha

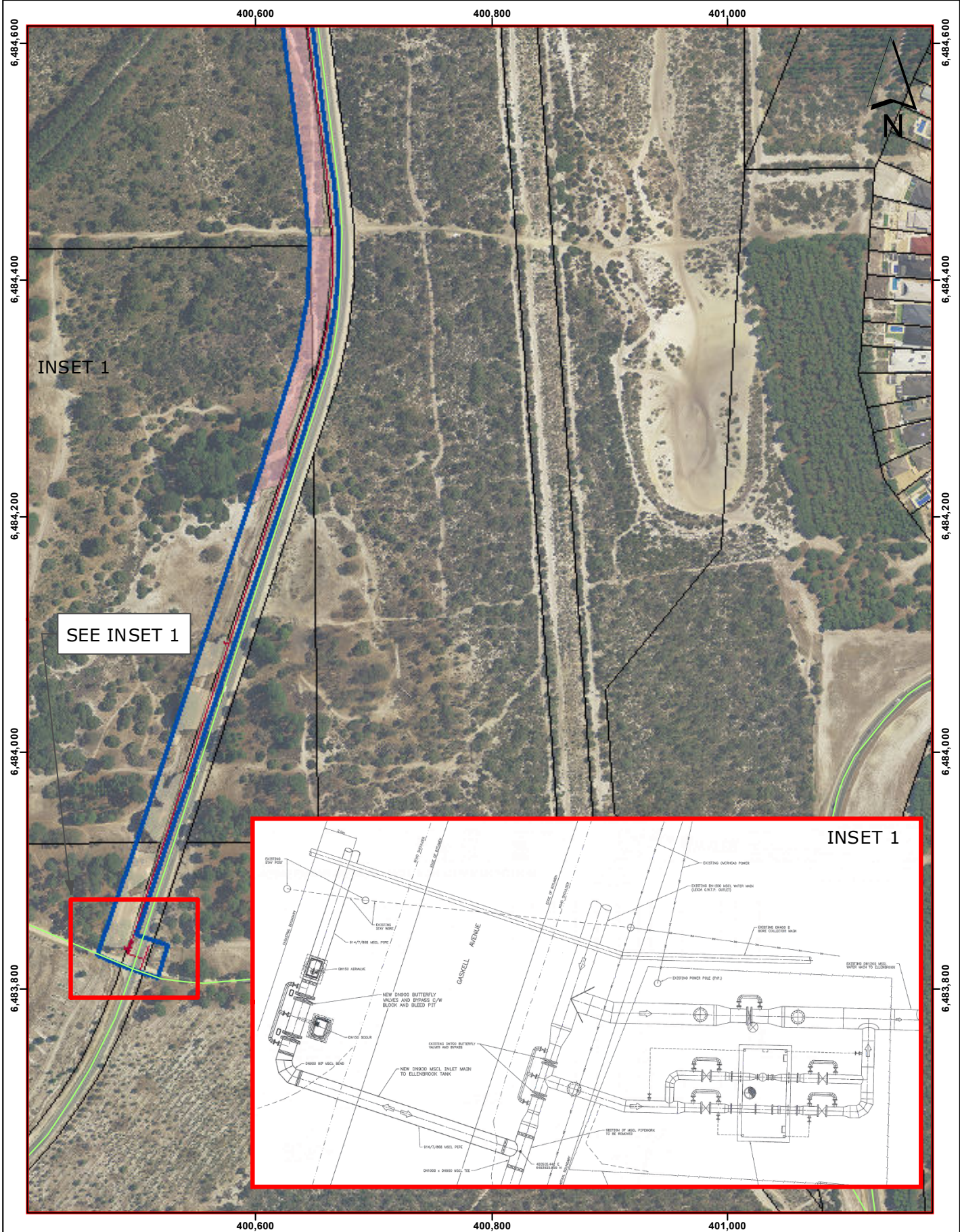
Vegetation Type

	Banksia Low Open Forest
	Isolated Tree
	Pine Plantation
	Pine, Melaleuca and Eucalyptus Open Planted Woodland
	Revegetation

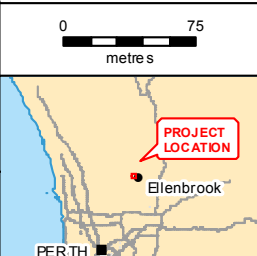


AUTHOR: JAC KSON0	DATE: 16/09/2015
GROUP: EIA & Approvals Section	PROJECT: ERWS Project (C-W00179)

Ellenbrook Reliable Water Storage Project (C-W00179)
Figure 7 - Proposed Clearing and Infrastructure Layout



LEGEND	
	Cadastral Boundary
	Construction Footprint Area
	Project Area, 28.4 ha
	Inlet Pipe
Proposed Clearing, 16.5 ha	
	Banksia Low Open Forest
	Isolated Tree
	Pine Plantation
	Pine, Melaleuca and Eucalyptus Open Planted Woodland
	Revegetation



AUTHOR: JAC KSON0	DATE: 16/09/2015
GROUP: EIA & Approvals Section	PROJECT: ERWS Project (C-W00179)
Ellenbrook Reliable Water Storage Project (C-W00179) Figure 8 - Proposed Clearing and Infrastructure Layout	

Coordinate System: GDA 1994 MGA Zone 50 Vertical Datum: AHD
 The information contained herein is the exclusive property of the Water Corporation and the respective copyright owners. It is subject to ongoing review and should be viewed in conjunction with the associated materials. No part of this production should be copied, modified, reproduced or put into any form other than that intended by the author.