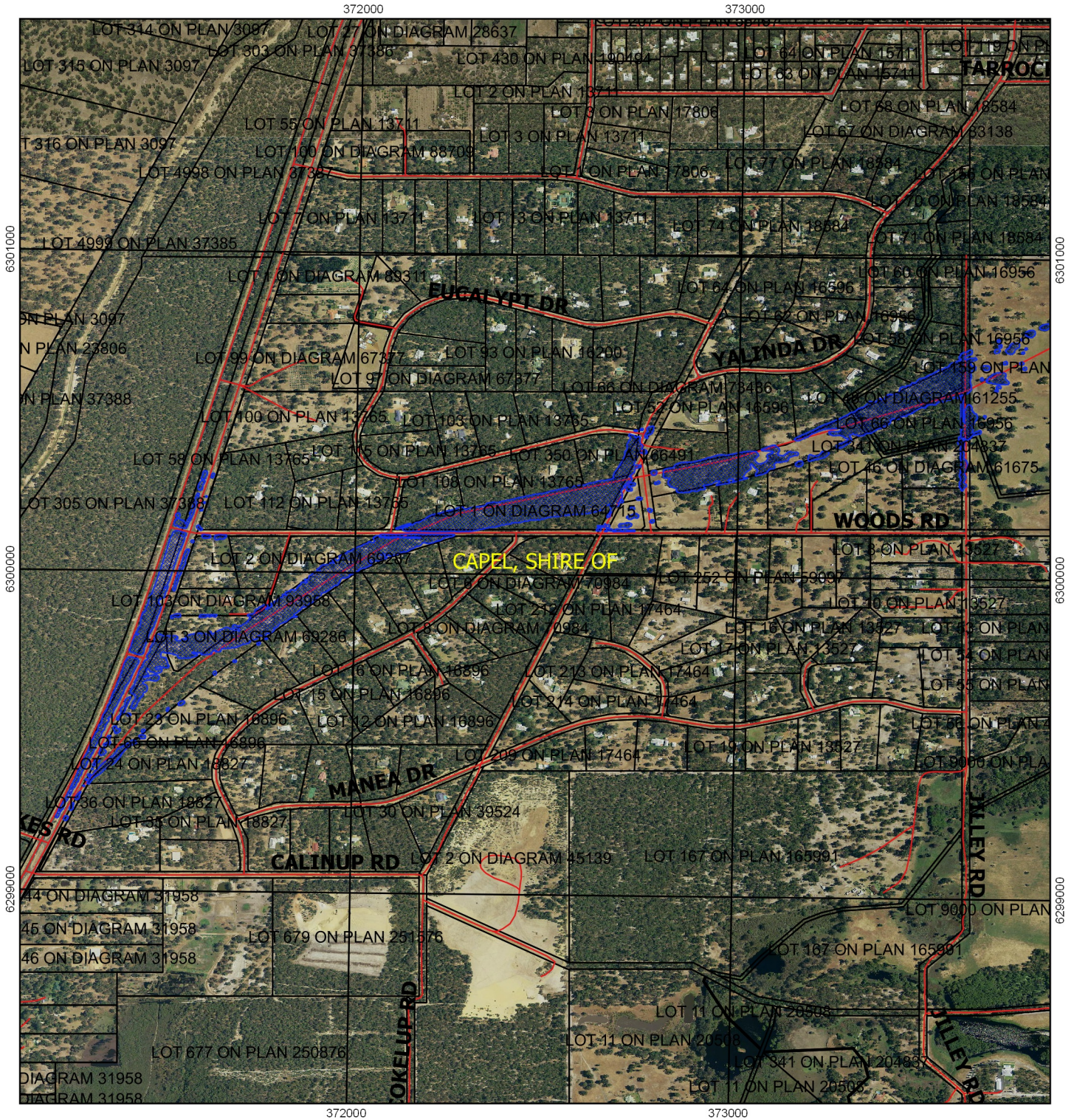






CPS 6877/1 - Map c



Legend

-  Areas applied to clear
 -  Roads
 -  LGA
 -  Cadastre
- Virtual Mosaic (LGATE-V001)



1:11,000

MGA 94

Geocentric Datum of Australia 1994

.....Date.....

Officer with delegated authority under Section 20
of the Environmental Protection Act 1986



GOVERNMENT OF
WESTERN AUSTRALIA