

# CPS 6905/1 - Alcoa of Australia Limited

400000

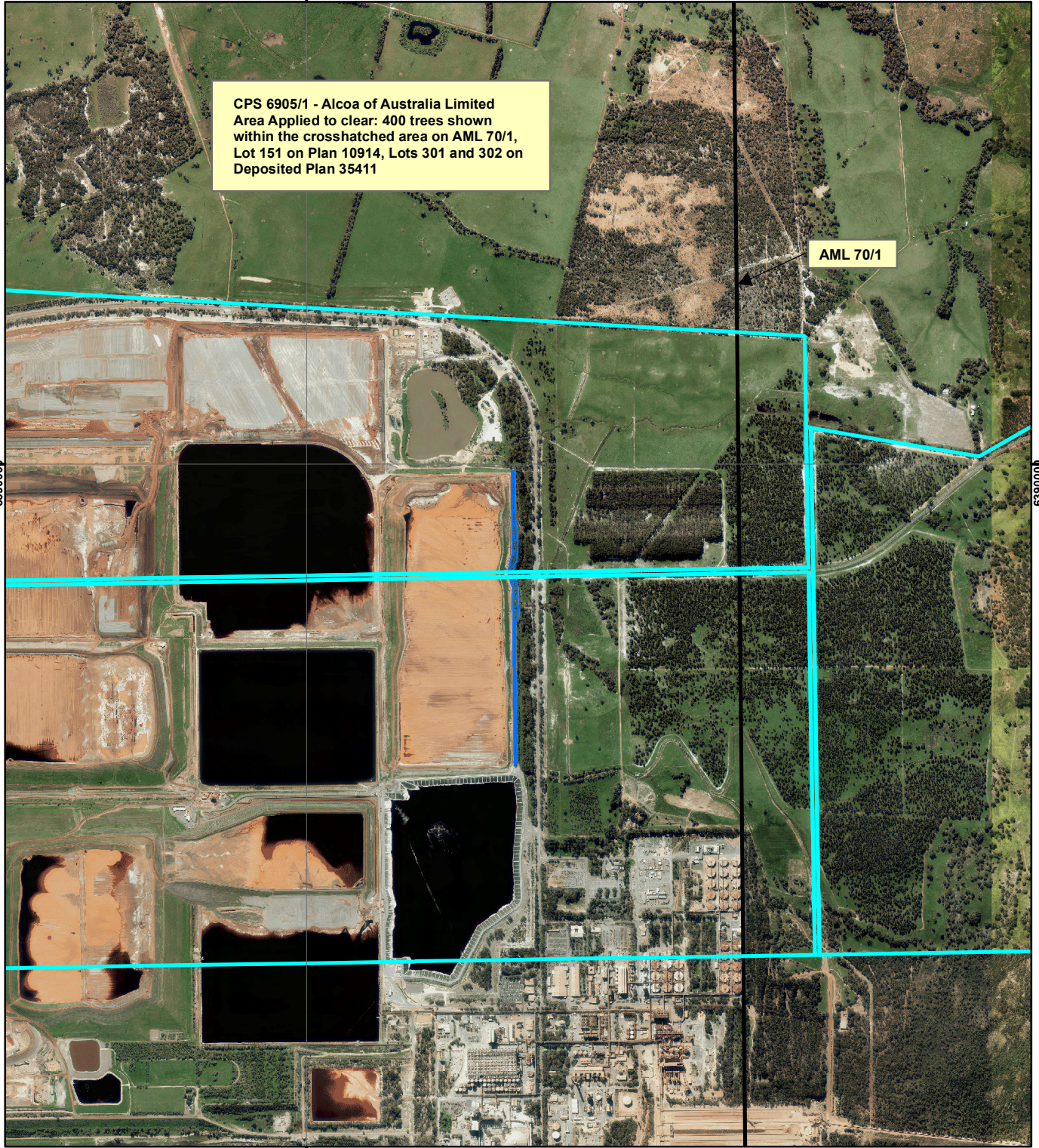
CPS 6905/1 - Alcoa of Australia Limited  
 Area Applied to clear: 400 trees shown  
 within the crosshatched area on AML 70/1,  
 Lot 151 on Plan 10914, Lots 301 and 302 on  
 Deposited Plan 35411

AML 70/1


6390000

6390000

400000




## Legend

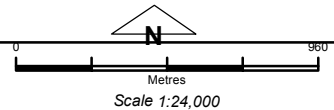
 Clearing Instruments

## Mining Tenements

FMT\_TENID

 ML 1SA

 Landgate Cadastre; Western Australia



Geocentric Datum Australia 1994

*Note: the data in this map have not been projected. This may result in geometric distortion or measurement inaccuracies.*

..... Date .....

Officer with delegated authority under Section 20 of the Environmental Protection Act 1986

Information derived from this map should be confirmed with the data custodian acknowledged by the agency acronym in the legend.

