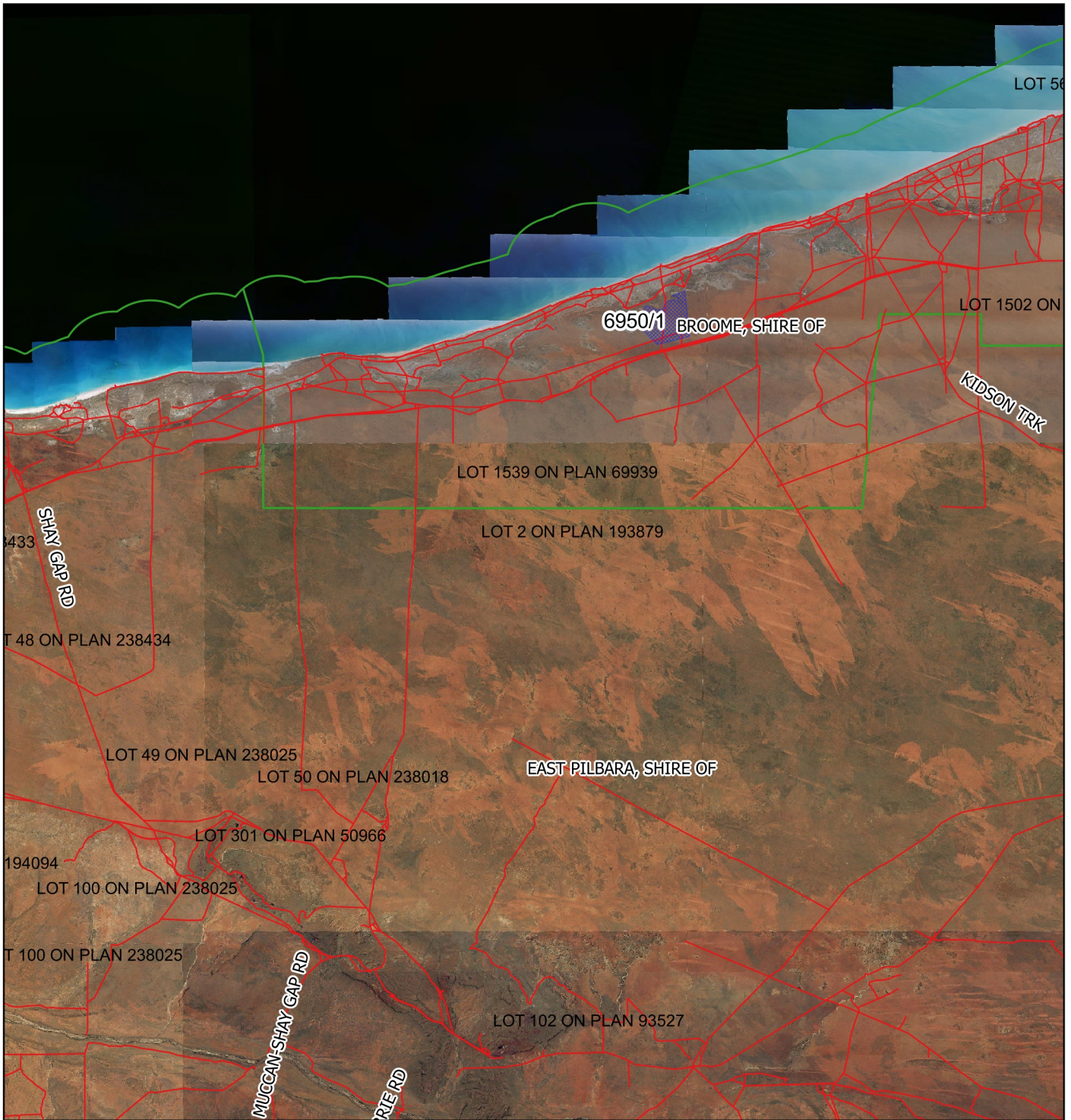





CPS 6950/1 - Context Map



Legend

-  Clearing Instruments Proposal
-  local_gov_authority
- Virtual Mosaic
-  Cadastre



1:498,325

MGA 94

Geocentric Datum of Australia 1994

.....Date.....

Officer with delegated authority under Section 20
of the Environmental Protection Act 1986



GOVERNMENT OF
WESTERN AUSTRALIA