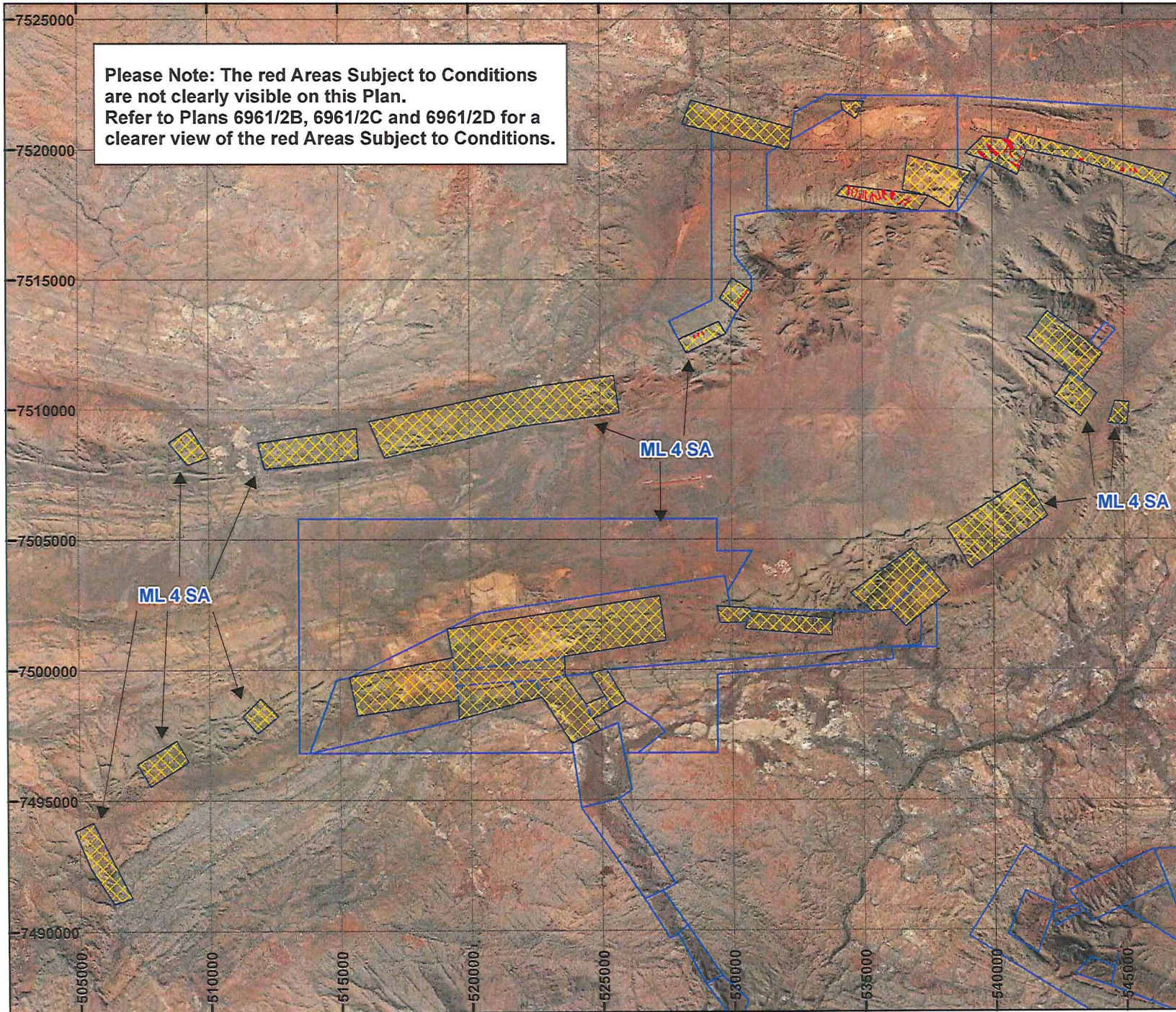
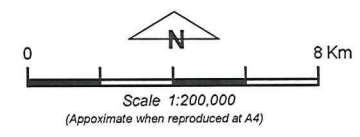


# PLAN 6961/2A



Please Note: The red Areas Subject to Conditions are not clearly visible on this Plan. Refer to Plans 6961/2B, 6961/2C and 6961/2D for a clearer view of the red Areas Subject to Conditions.

- LEGEND**
- Mining Tenements
  - Clearing Instruments
    - Areas Approved to Clear
    - Areas Subject to Conditions
- SEAMLESS MOSAIC



Geocentric Datum Australia 1994  
*Note: the data in this map have not been projected. This may result in geometric distortion or measurement inaccuracies.*

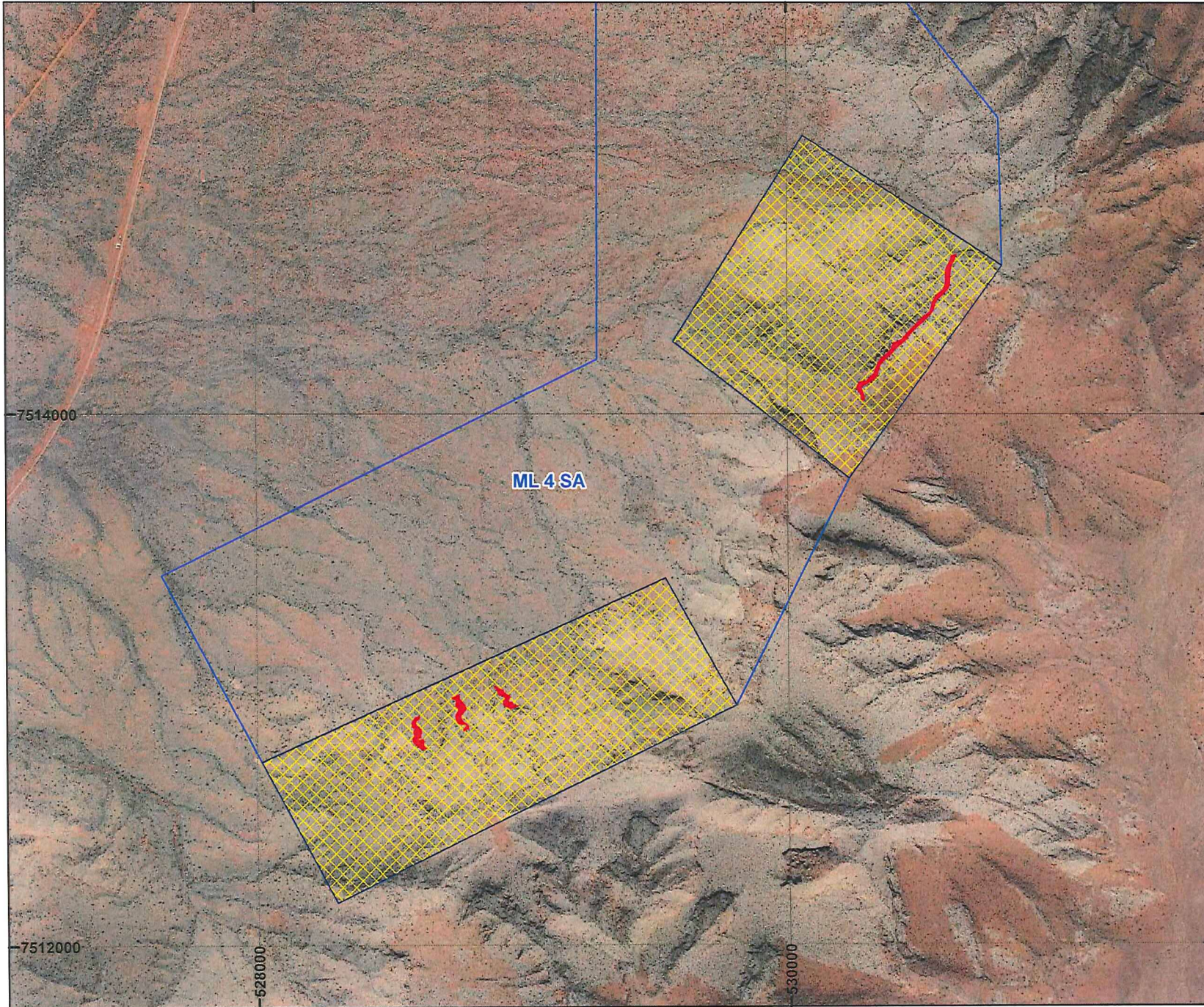
*M. Leybourne* Date 4/8/16  
MARNIE LEYBOURNE  
Officer with delegated authority under Section 20 of the Environmental Protection Act 1986

Information derived from this map should be confirmed with the data custodian acknowledged by the agency acronym in the legend.








# PLAN 6961/2B



## LEGEND

-  Mining Tenements
- Clearing Instruments**
-  Areas Approved to Clear
-  Areas Subject to Conditions

SEAMLESS MOSAIC



Scale 1:20,000  
(Approximate when reproduced at A4)

Geocentric Datum Australia 1994

Note: the data in this map have not been projected. This may result in geometric distortion or measurement inaccuracies.

 Date 4/8/16

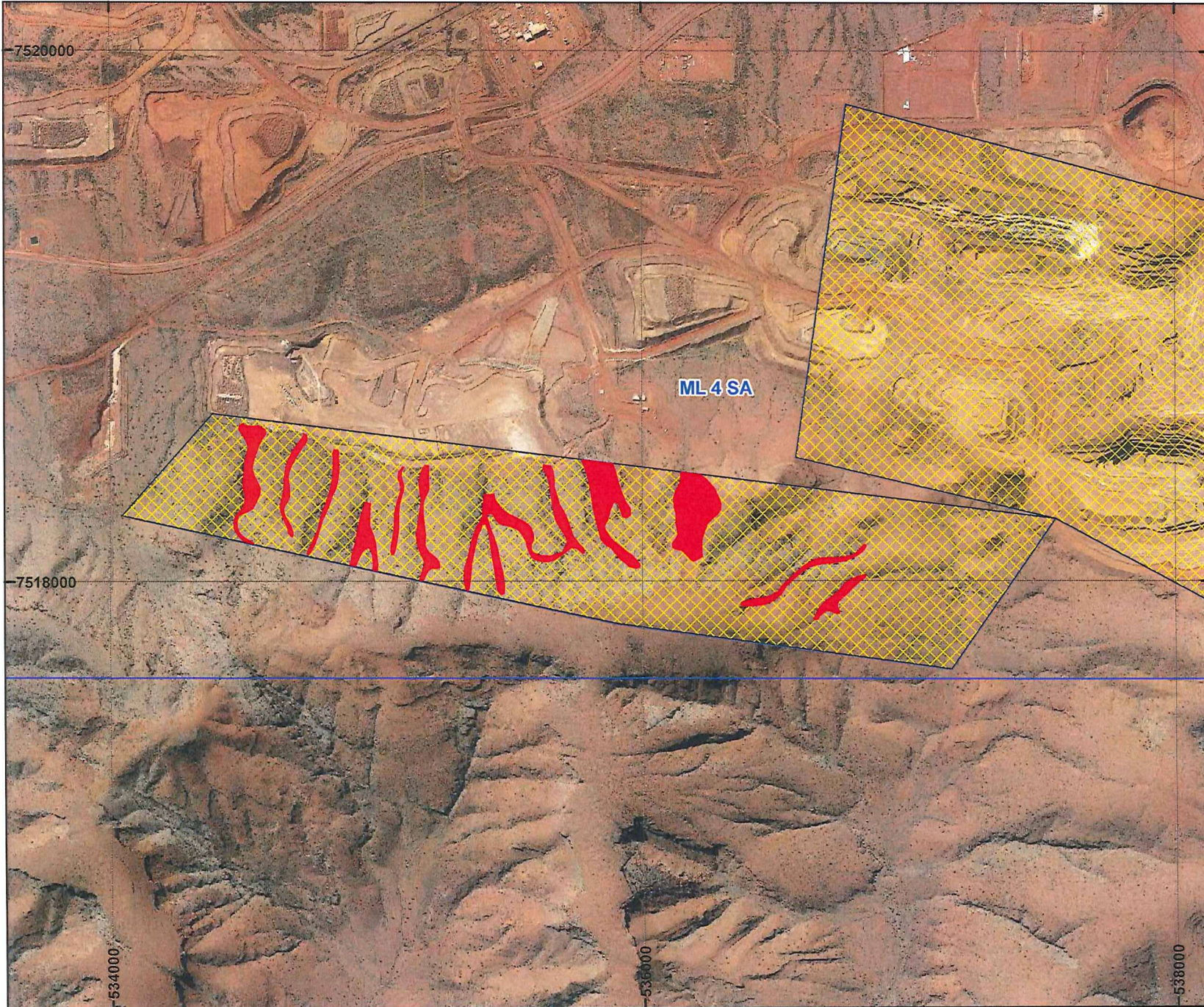
MARNIE LEYBOURNE  
Officer with delegated authority under Section 20 of  
the Environmental Protection Act 1986

Information derived from this map should be  
confirmed with the data custodian acknowledged  
by the agency acronym in the legend.







# PLAN 6961/2C



## LEGEND

-  Mining Tenements
- Clearing Instruments**
-  Areas Approved to Clear
-  Areas Subject to Conditions

SEAMLESS MOSAIC



Scale 1:20,000  
(Approximate when reproduced at A4)

Geocentric Datum Australia 1994

Note: the data in this map have not been projected. This may result in geometric distortion or measurement inaccuracies.

*M. Leybourne* Date 4/8/16

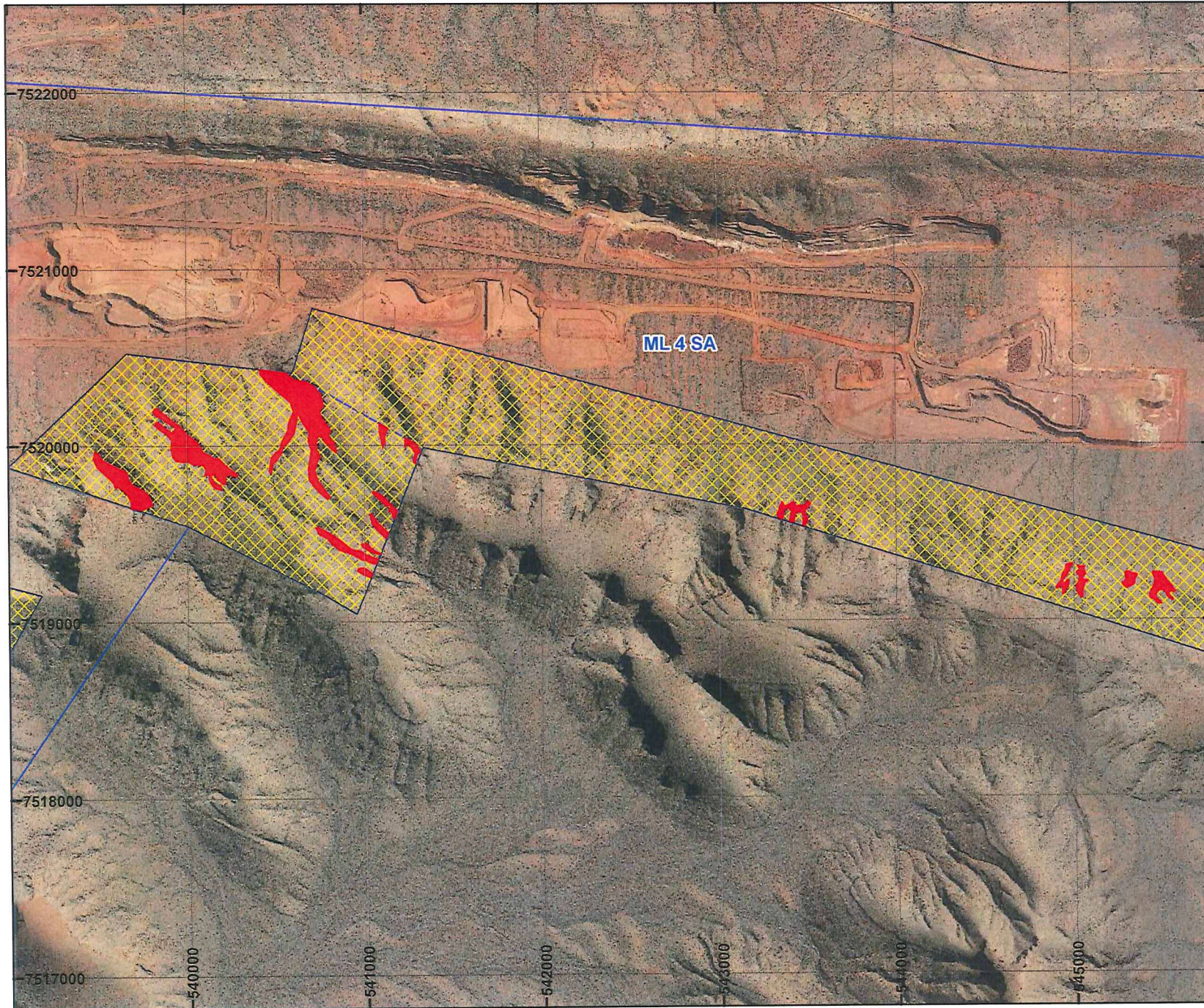
MARNIE LEYBOURNE  
Officer with delegated authority under Section 20 of  
the Environmental Protection Act 1986

Information derived from this map should be confirmed with the data custodian acknowledged by the agency acronym in the legend.





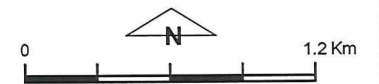
# PLAN 6961/2D



## LEGEND

-  Mining Tenements
- Clearing Instruments**
-  Areas Approved to Clear
-  Areas Subject to Conditions

SEAMLESS MOSAIC



Scale 1:30,000

(Approximate when reproduced at A4)

Geocentric Datum Australia 1994

Note: the data in this map have not been projected. This may result in geometric distortion or measurement inaccuracies.

*M. Niek* ..... Date *4/8/16*

MARNIE LEYBOURNE  
Officer with delegated authority under Section 20 of  
the Environmental Protection Act 1986

Information derived from this map should be  
confirmed with the data custodian acknowledged  
by the agency acronym in the legend.

