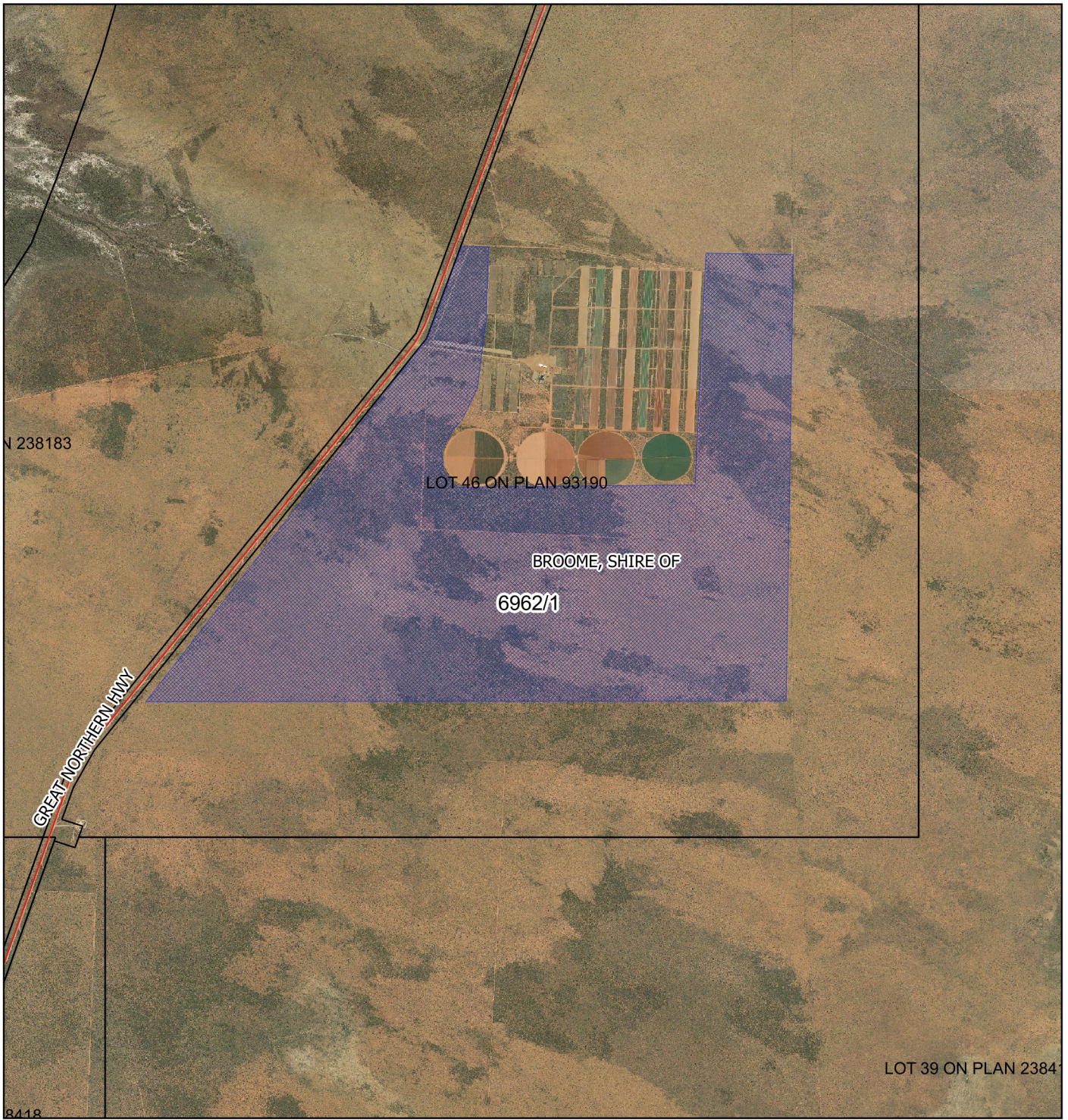






# CPS 6962/1 - Map



## Legend

-  Clearing Instruments Proposal
-  Roads
-  local\_gov\_authority
-  Cadastre
- Virtual Mosaic



1:60,000

MGA 94

Geocentric Datum of Australia 1994

.....Date.....

Officer with delegated authority under Section 20  
of the Environmental Protection Act 1986



GOVERNMENT OF  
WESTERN AUSTRALIA