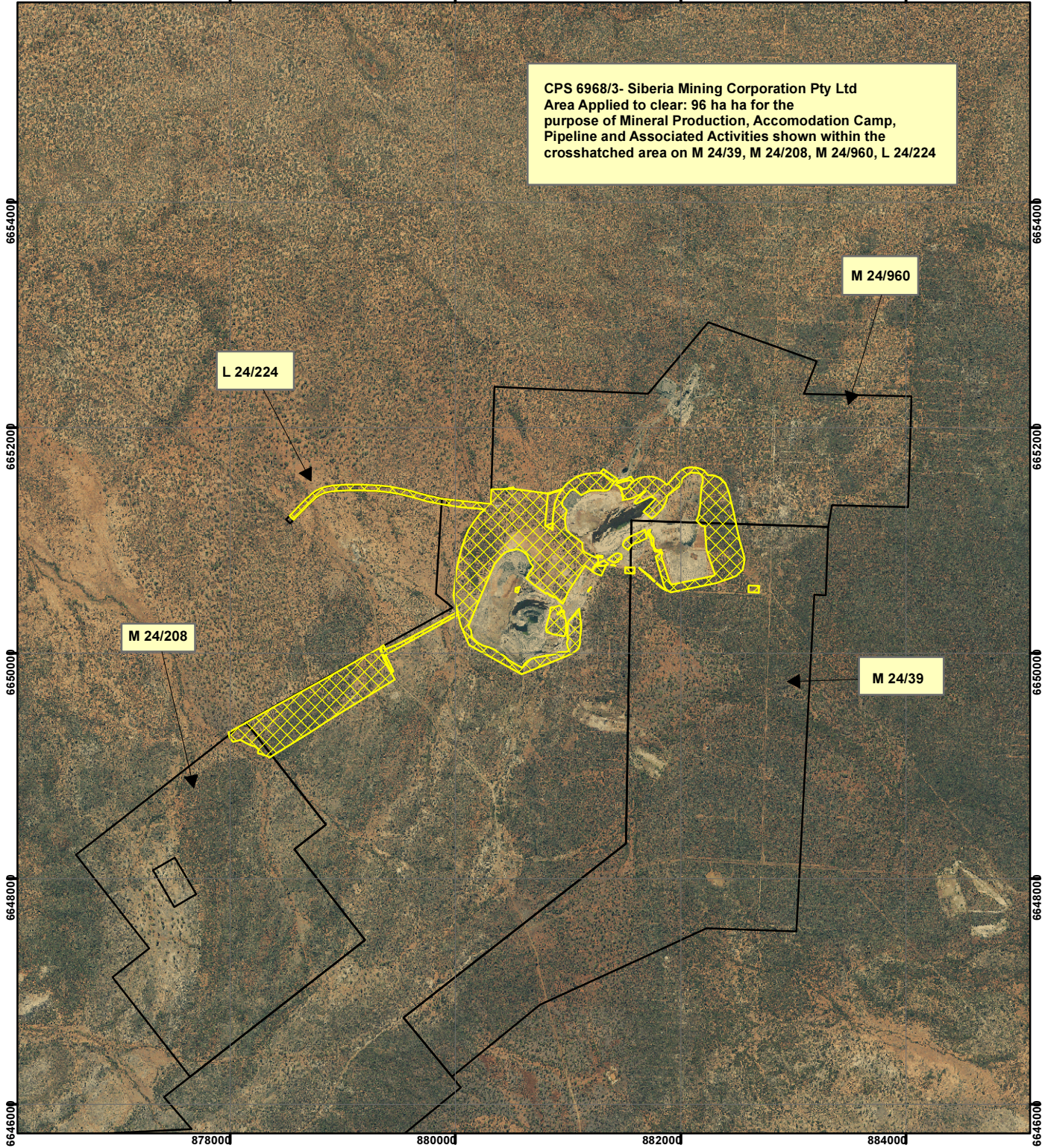



CPS 6968/3 - Siberia Mining Corporation Pty Ltd

878000 880000 882000 884000

CPS 6968/3- Siberia Mining Corporation Pty Ltd
 Area Applied to clear: 96 ha ha for the
 purpose of Mineral Production, Accomodation Camp,
 Pipeline and Associated Activities shown within the
 crosshatched area on M 24/39, M 24/208, M 24/960, L 24/224

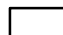





Legend

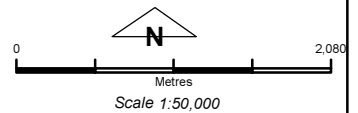
 Clearing Instruments

Mining Tenements

FMT_TENID

-  L 24/224
-  M 24/208
-  M 24/39
-  M 24/960

Davyhurst Aerial Mosaic June 2012



Geocentric Datum Australia 1994

Note: the data in this map have not been projected. This may result in geometric distortion or measurement inaccuracies.

..... Date

Officer with delegated authority under Section 20 of the Environmental Protection Act 1986

Information derived from this map should be confirmed with the data custodian acknowledged by the agency acronym in the legend.

