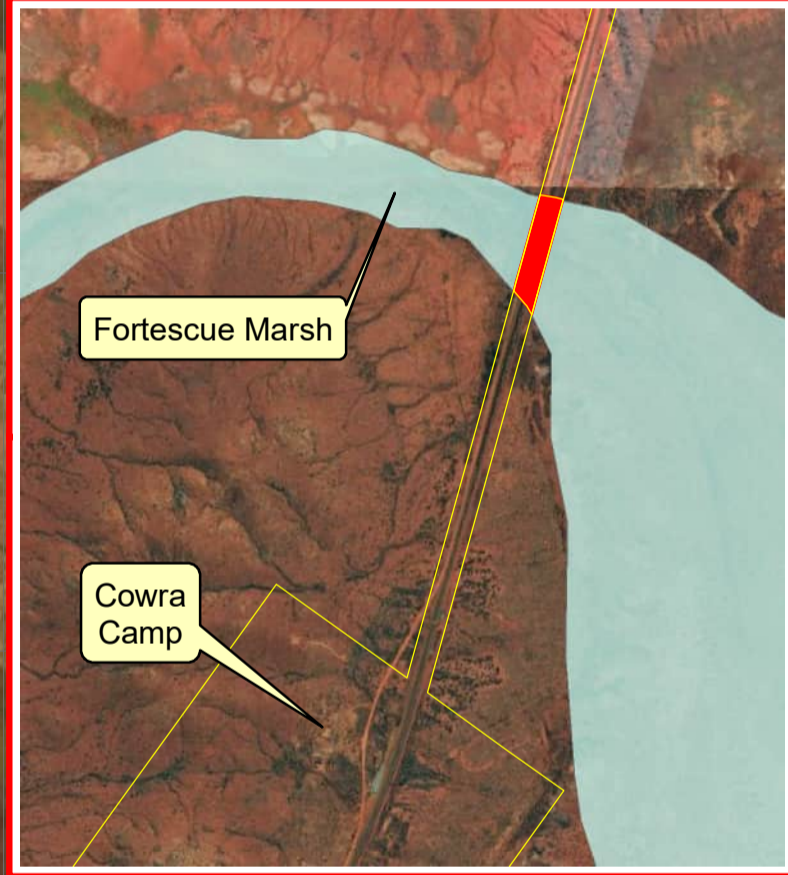


**Legend**

- Proposed Boundary for CPS 7009/4
- Clearing not approved for Borrow Pits (Condition 5)
- Mangrove Conditioned Area (Condition 6)



**BHP** ENVIRONMENTAL APPROVALS

**NVCP CPS 7009/3 RENWAL  
NEWMAN MAINLINE  
REGIONAL OVERVIEW**

SCALE (A3): 1:1,000,000    DATUM: GDA2020/MGA 50    **FIGURE 1**

Prepared: Chris Hopkins    Revision: FINAL

Centre: Perth    Date: 01 July 2024    Dwg: RAIL\_011NVCP\_001\_RevA\_0