

PLAN 7009/2A

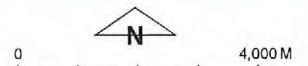


LEGEND

Clearing Instruments

Areas Approved to Clear

Orthophotography sourced from Landgate



Scale 1:120,000
(Approximate when reproduced at A4)

Geocentric Datum Australia 1994

Note: the data in this map have not been projected. This may result in geometric distortion or measurement inaccuracies.

Jacqueline Middleton

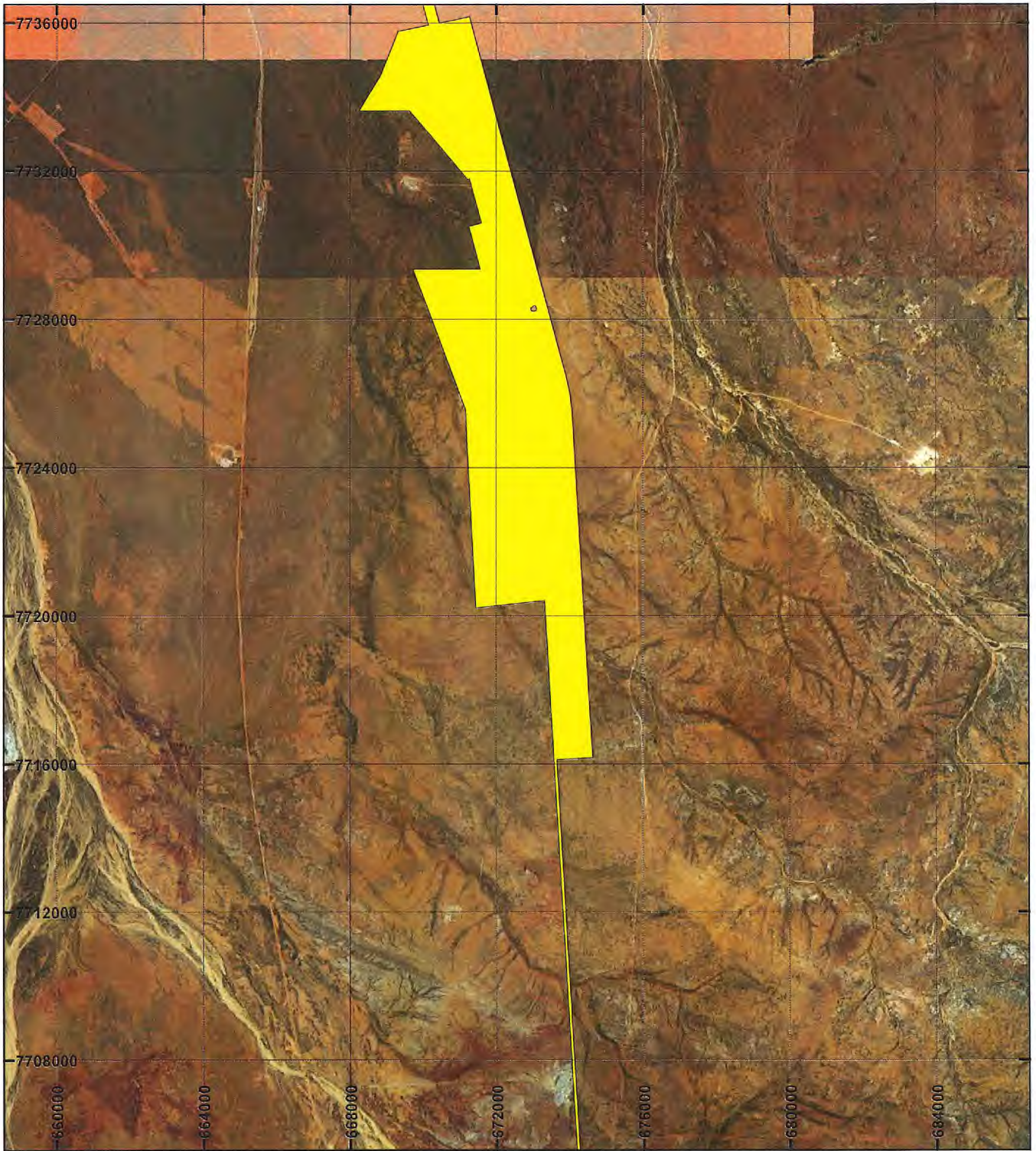
JACQUI MIDDLETON Date 08/08/2019
Officer with delegated authority under Section 20 of
the Environmental Protection Act 1986

Information derived from this map should be confirmed with the data custodian acknowledged by the agency acronym in the legend.



WA Crown Copyright 2002

PLAN 7009/2B

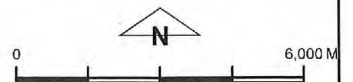


LEGEND

Clearing Instruments

□ Areas Approved to Clear

Orthophotography sourced from Landgate



Scale 1:150,000
(Approximate when reproduced at A4)

Geocentric Datum Australia 1994

Note: the data in this map have not been projected. This may result in geometric distortion or measurement inaccuracies.

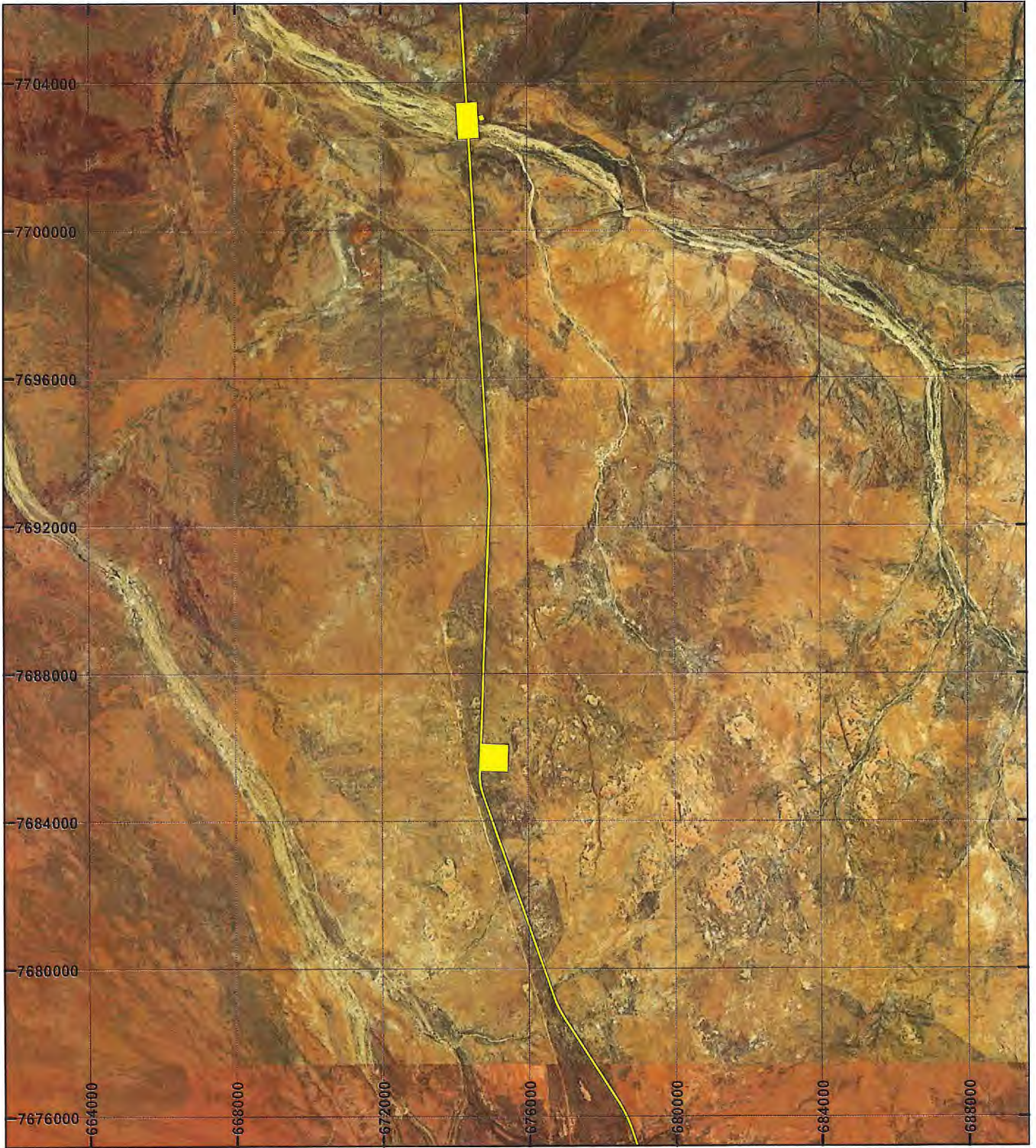
JACQUI MIDDLETON Date 08/08/2019
Officer with delegated authority under Section 20 of
the Environmental Protection Act 1986

Information derived from this map should be confirmed with the data custodian acknowledged by the agency acronym in the legend.



VIA Crown Copyright 2002

PLAN 7009/2C

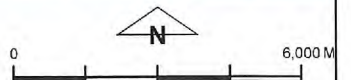


LEGEND

Clearing Instruments

□ Areas Approved to Clear

Orthophotography sourced from Landgate



Scale 1:150,000
(Approximate when reproduced at A4)

Geocentric Datum Australia 1994

Note: the data in this map have not been projected. This may result in geometric distortion or measurement inaccuracies.

Jacqui Middleton

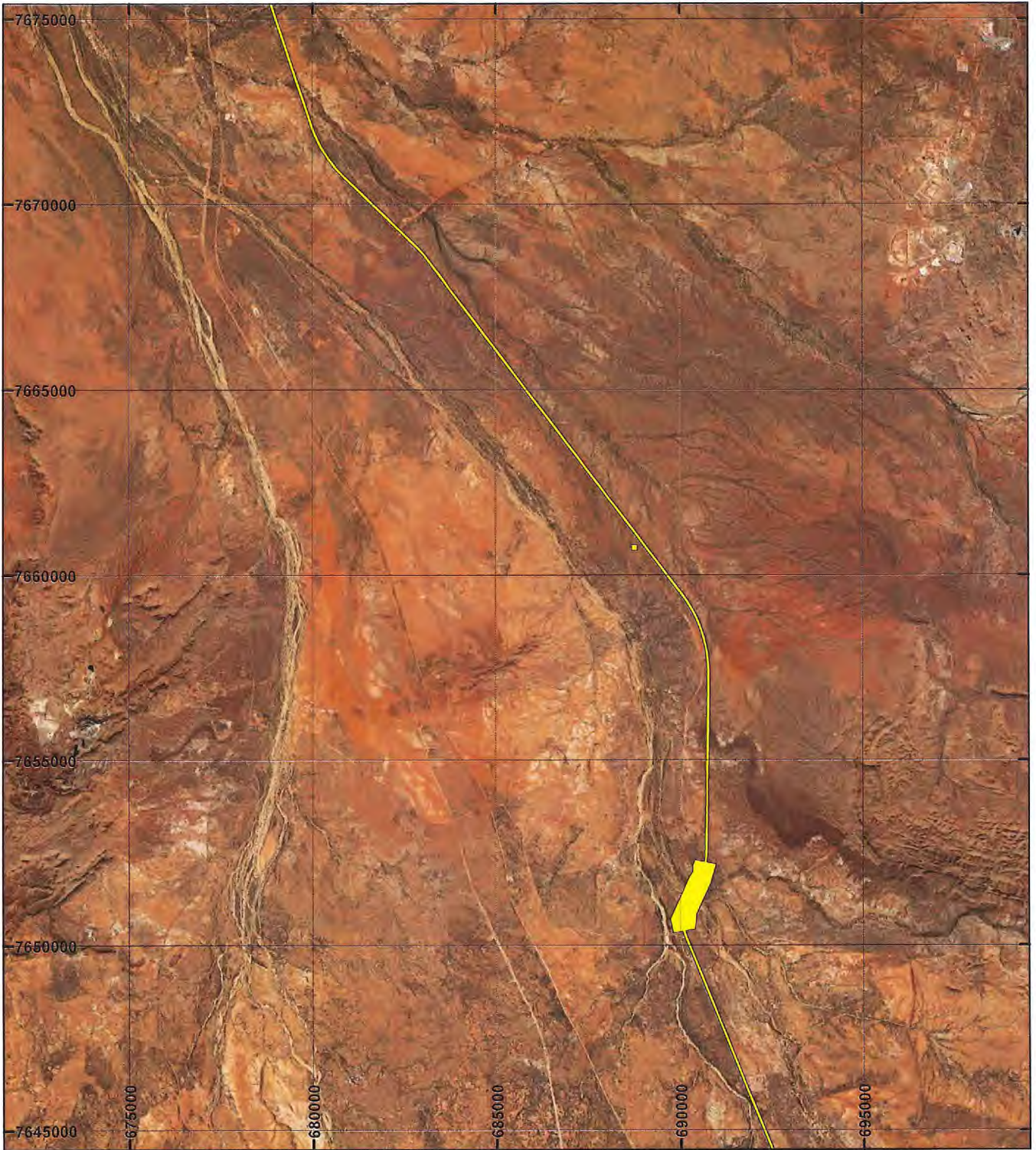
JACQUI MIDDLETON Date 08/08/2019
Officer with delegated authority under Section 20 of the Environmental Protection Act 1986

Information derived from this map should be confirmed with the data custodian acknowledged by the agency acronym in the legend.



WA Crown Copyright 2002

PLAN 7009/2D

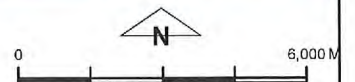


LEGEND

Clearing Instruments

□ Areas Approved to Clear

Orthophotography sourced from Landgate



Scale 1:150,000

(Approximate when reproduced at A4)

Geocentric Datum Australia 1994

Note: the data in this map have not been projected. This may result in geometric distortion or measurement inaccuracies.

J Middleton

JACQUI MIDDLETON Date 08/08/2019
Officer with delegated authority under Section 20 of
the Environmental Protection Act 1986

Information derived from this map should be confirmed with the data custodian acknowledged by the agency acronym in the legend.



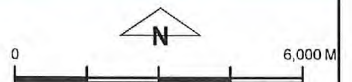
WA Crown Copyright 2002

PLAN 7009/2E



LEGEND

- Clearing Instruments
 - Areas Approved to Clear
- Orthophotography sourced from Landgate



Scale 1:150,000
(Approximate when reproduced at A4)

Geocentric Datum Australia 1994

Note: the data in this map have not been projected. This may result in geometric distortion or measurement inaccuracies.

J Middleton
JACQUI MIDDLETON Date 08/08/2019
Officer with delegated authority under Section 20 of
the Environmental Protection Act 1986

Information derived from this map should be confirmed with the data custodian acknowledged by the agency acronym in the legend.



WA Crown Copyright 2002

PLAN 7009/2F

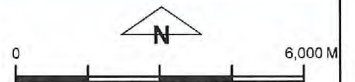


LEGEND

Clearing Instruments

Areas Approved to Clear

Orthophotography sourced from Landgate



Scale 1:150,000
(Approximate when reproduced at A4)

Geocentric Datum Australia 1994

Note: the data in this map have not been projected. This may result in geometric distortion or measurement inaccuracies.

J Middleton

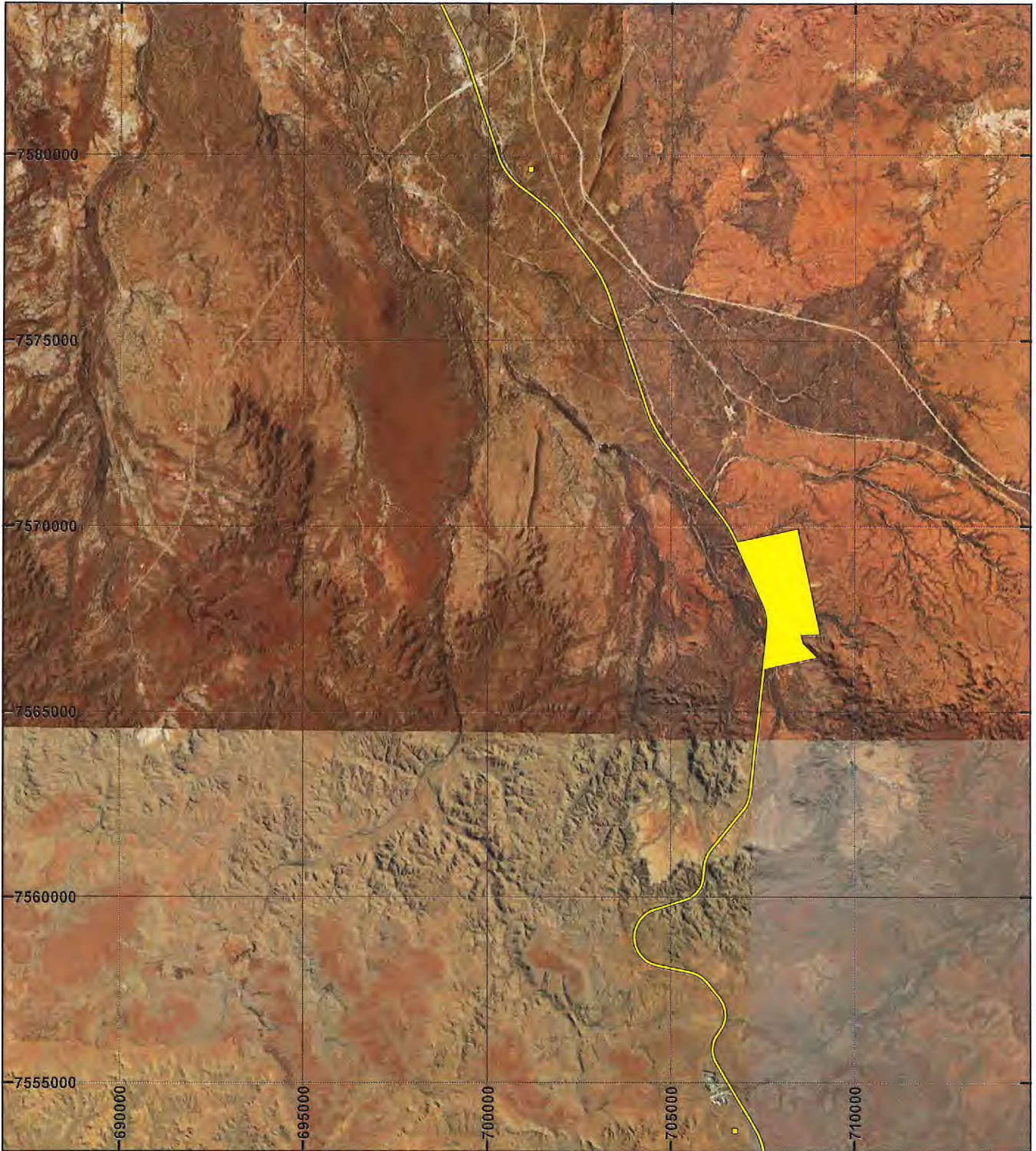
JACQUI MIDDLETON Date 08/08/2019
Officer with delegated authority under Section 20 of
the Environmental Protection Act 1986

Information derived from this map should be
confirmed with the data custodian acknowledged
by the agency acronym in the legend.



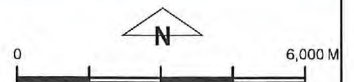
WA Crown Copyright 2002

PLAN 7009/2G



LEGEND

- Clearing Instruments
 - Areas Approved to Clear
- Orthophotography sourced from Landgate



Scale 1:150,000
(Approximate when reproduced at A4)

Geocentric Datum Australia 1994

Note: the data in this map have not been projected. This may result in geometric distortion or measurement inaccuracies.

J Middleton

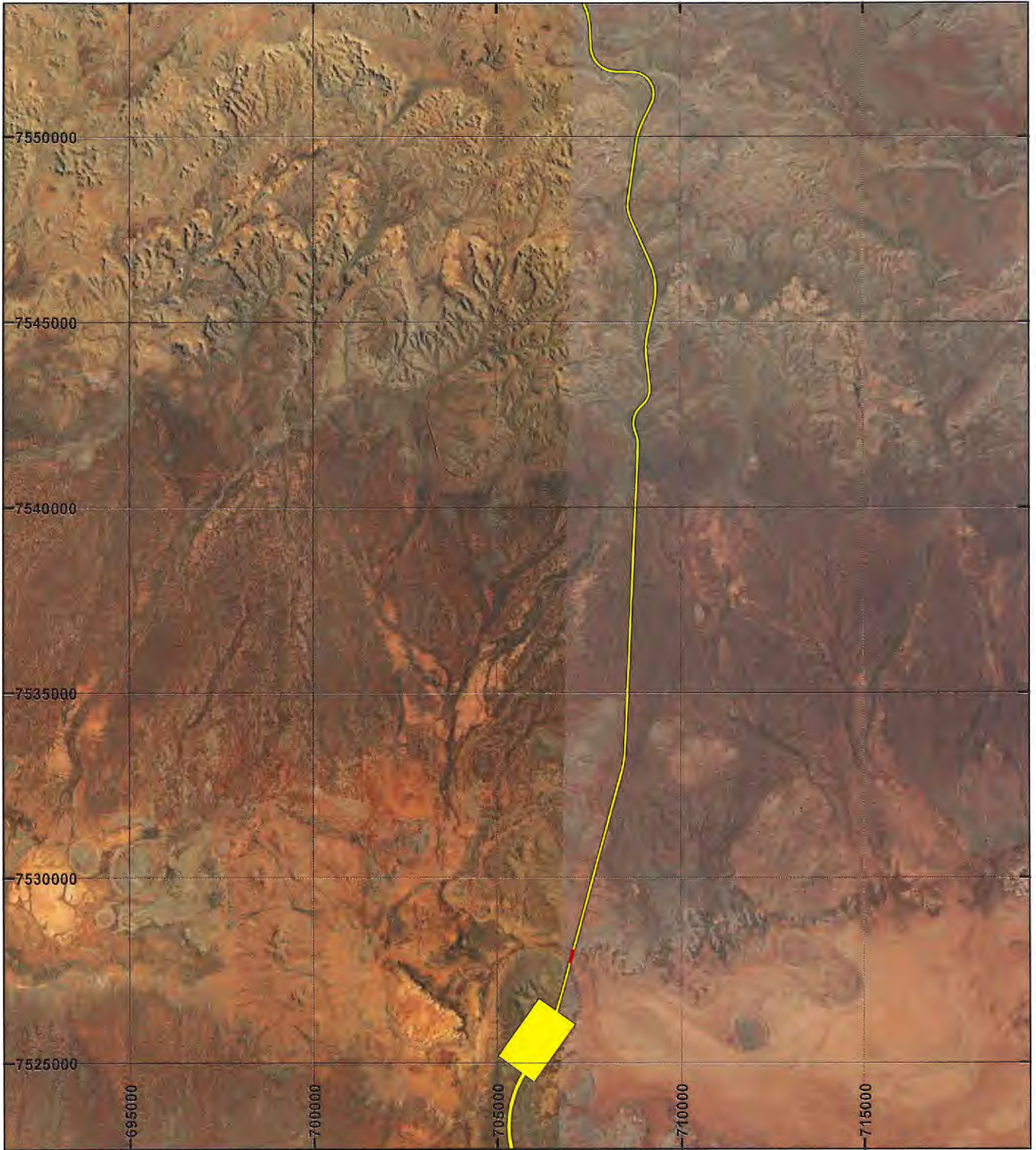
JACQUI MIDDLETON Date 08/08/2019
Officer with delegated authority under Section 20 of
the Environmental Protection Act 1986

Information derived from this map should be confirmed with the data custodian acknowledged by the agency acronym in the legend.



WA Crown Copyright 2002

PLAN 7009/2H



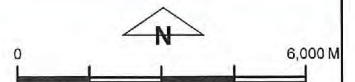
LEGEND

Clearing Instruments

□ Areas Approved to Clear

■ Areas Subject to Conditions

Orthophotography sourced from Landgate



Scale 1:150,000
(Approximate when reproduced at A4)

Geocentric Datum Australia 1994

Note: the data in this map have not been projected. This may result in geometric distortion or measurement inaccuracies.

J. Middleton

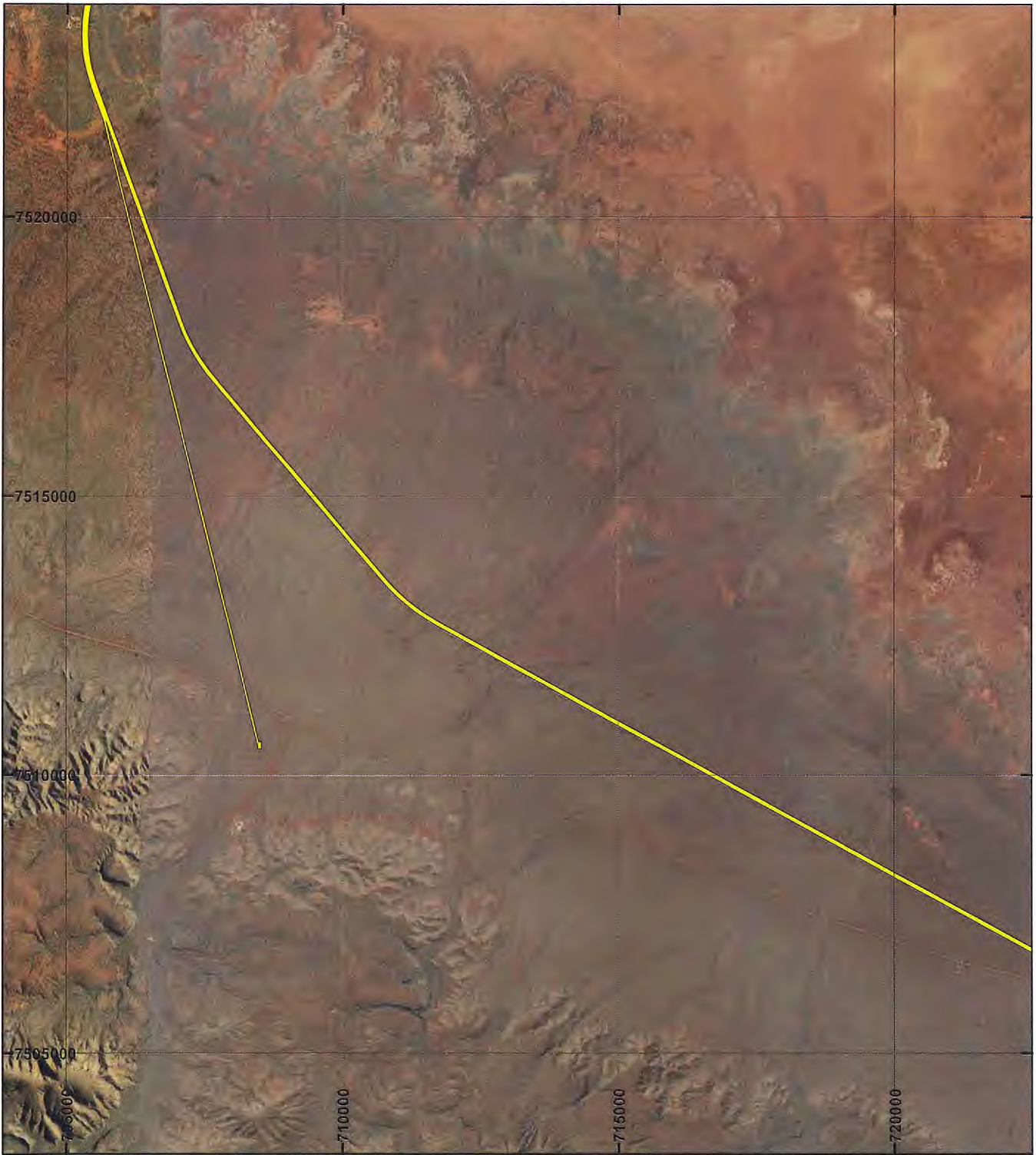
JACQUI MIDDLETON Date 08/08/2019
Officer with delegated authority under Section 20 of
the Environmental Protection Act 1986

Information derived from this map should be confirmed with the data custodian acknowledged by the agency acronym in the legend.



WA Crown Copyright 2002

PLAN 7009/2I

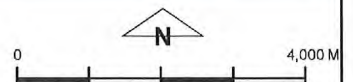


LEGEND

Clearing Instruments

□ Areas Approved to Clear

Orthophotography sourced from Landgate



Scale 1:100,000
(Approximate when reproduced at A4)

Geocentric Datum Australia 1994

Note: the data in this map have not been projected. This may result in geometric distortion or measurement inaccuracies.

J Middleton

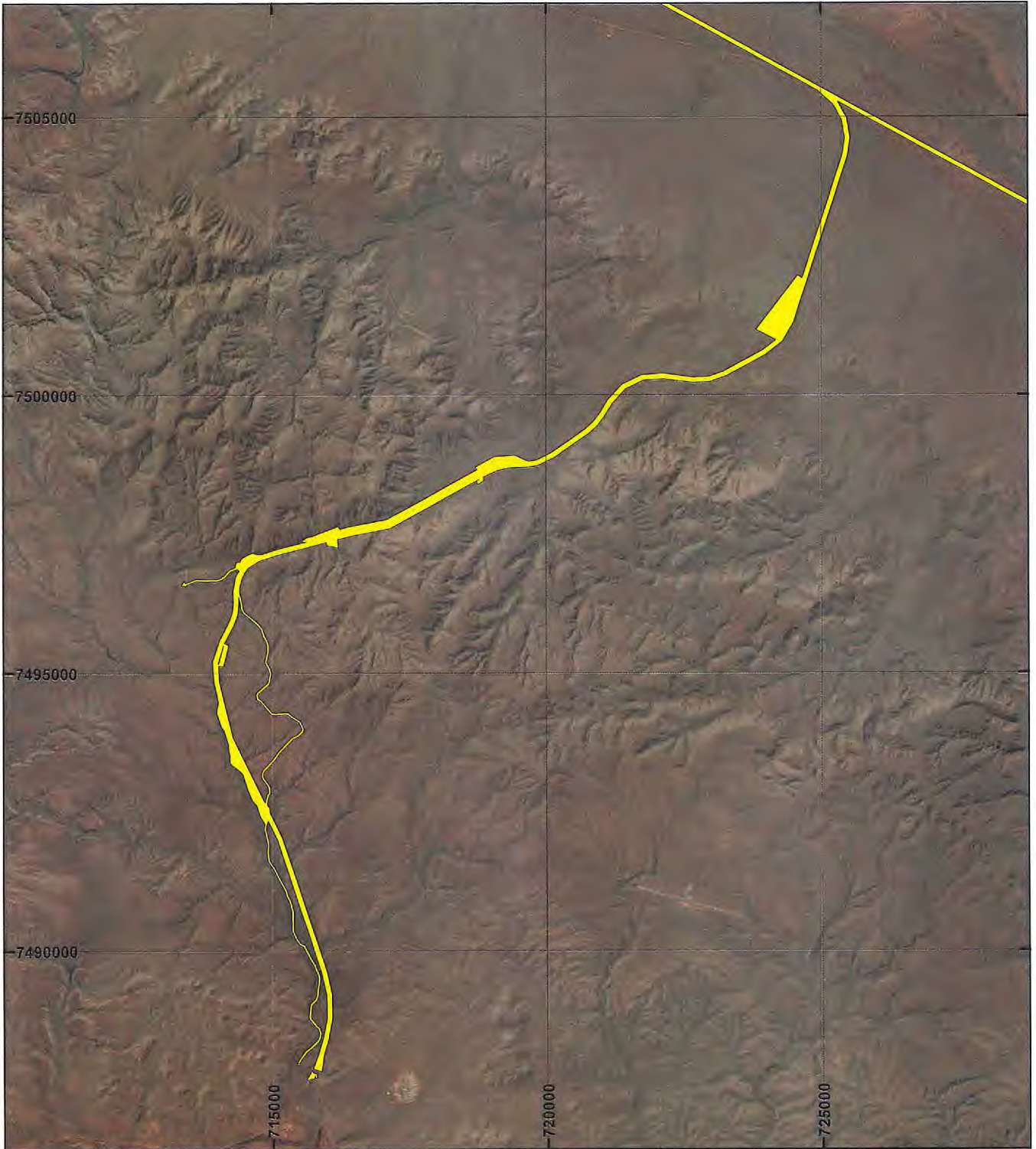
JACQUI MIDDLETON Date 08/08/2019
Officer with delegated authority under Section 20 of
the Environmental Protection Act 1986

Information derived from this map should be confirmed with the data custodian acknowledged by the agency acronym in the legend.



WA Crown Copyright 2002

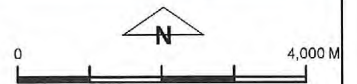
PLAN 7009/2J



LEGEND

- Clearing Instruments
- Areas Approved to Clear

Orthophotography sourced from Landgate



Scale 1:100,000
(Approximate when reproduced at A4)

Geocentric Datum Australia 1994

Note: the data in this map have not been projected. This may result in geometric distortion or measurement inaccuracies.

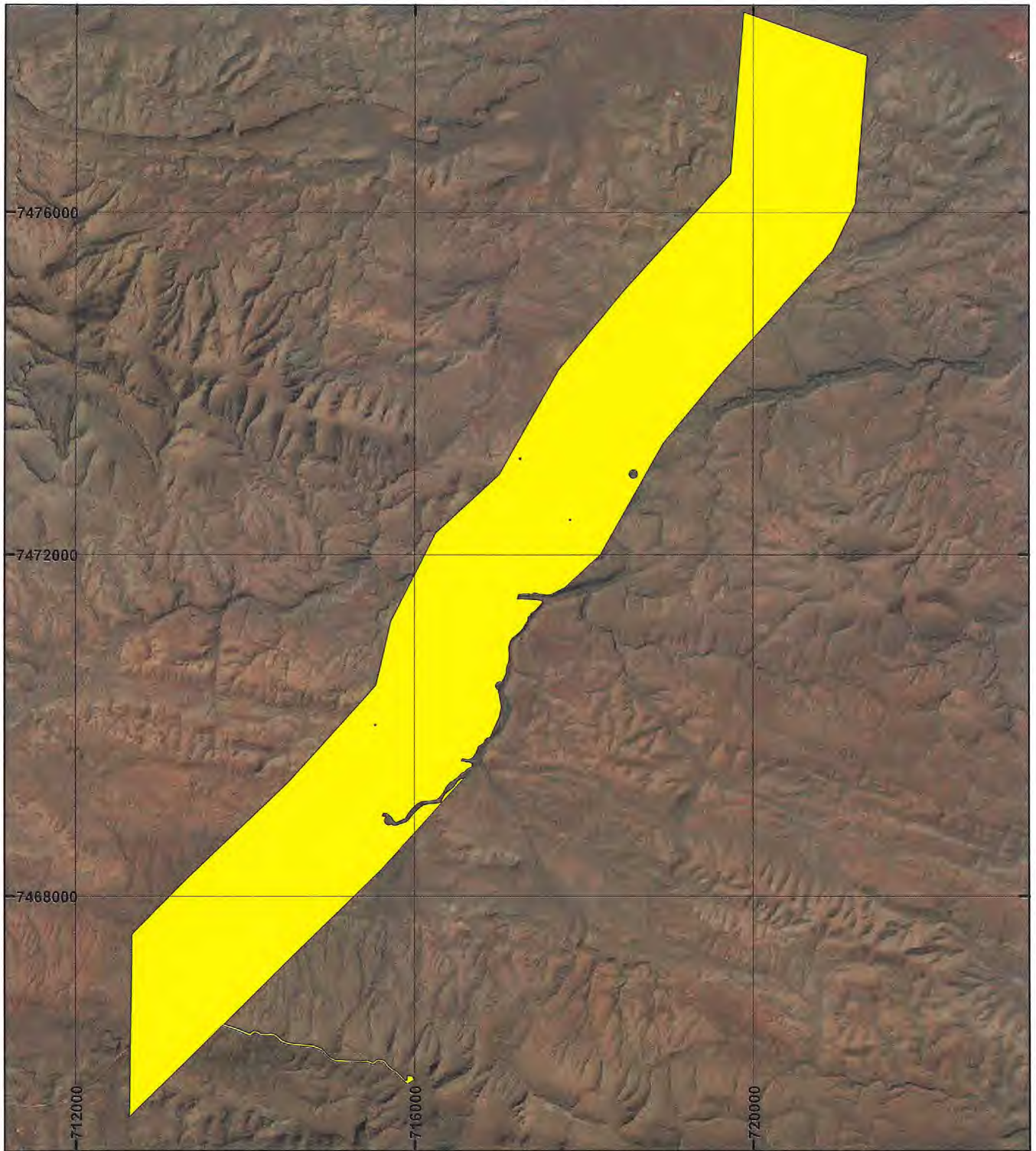
JACQUI MIDDLETON Date 08/08/2019
Officer with delegated authority under Section 20 of
the Environmental Protection Act 1986

Information derived from this map should be confirmed with the data custodian acknowledged by the agency acronym in the legend.



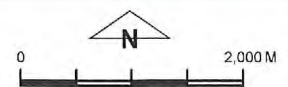
WA Crown Copyright 2002

PLAN 7009/2K



LEGEND

- Clearing Instruments
 - Areas Approved to Clear
- Orthophotography sourced from Landgate



Scale 1:65,000
(Approximate when reproduced at A4)

Geocentric Datum Australia 1994

Note: the data in this map have not been projected. This may result in geometric distortion or measurement inaccuracies.

JACQUI MIDDLETON Date 08/08/2019
Officer with delegated authority under Section 20 of
the Environmental Protection Act 1986

Information derived from this map should be confirmed with the data custodian acknowledged by the agency acronym in the legend.




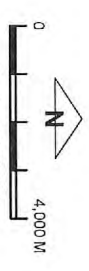
WA Crown Copyright 2002

PLAN 7009/2L



LEGEND

Clearing Instruments
 Areas Approved to Clear
 Orthophotography sourced from Landgate



Note: the data in this map have not been projected. This may result in geometric distortion or measurement inaccuracies.

Jacqui Middleton

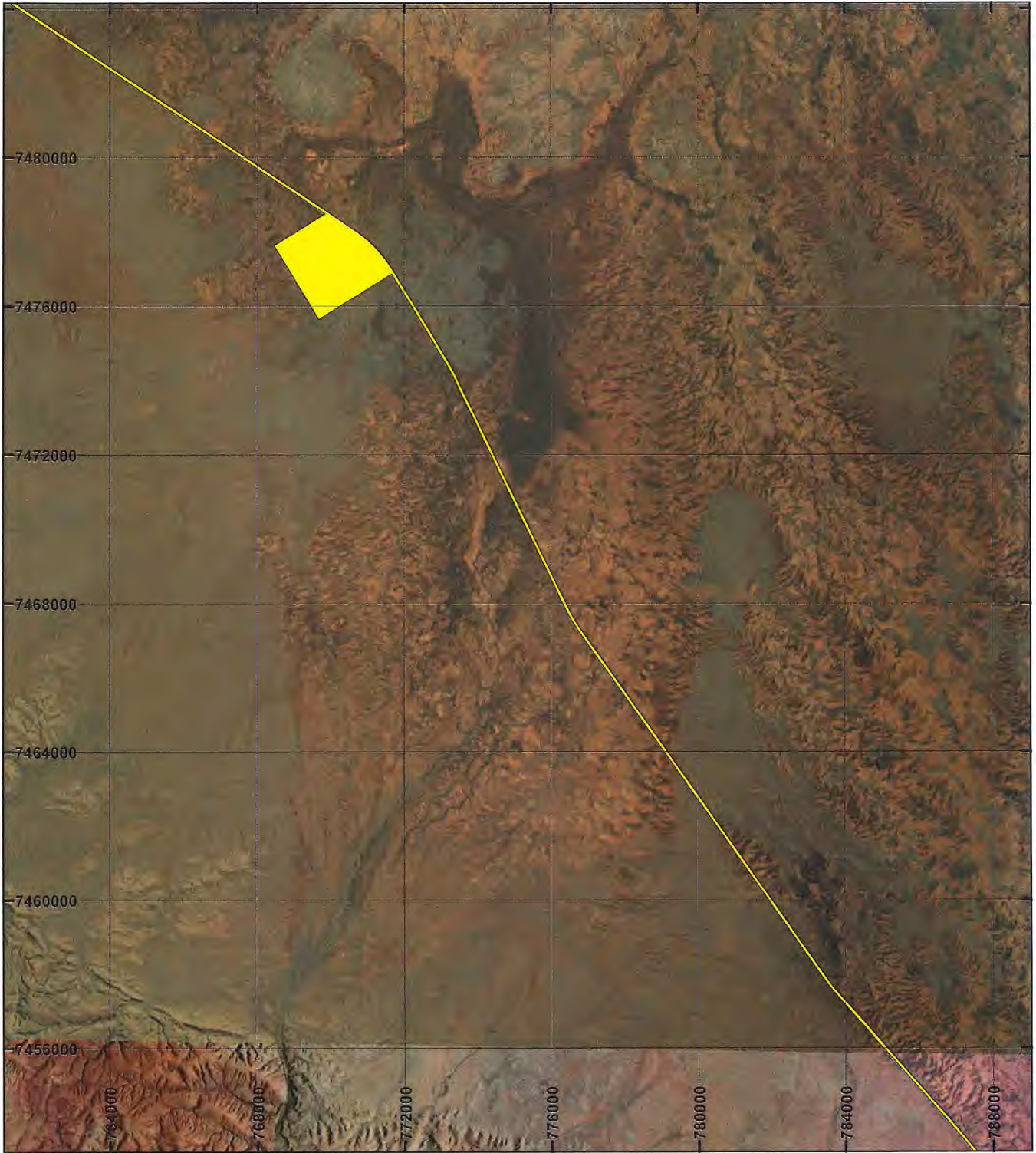
JACQUI MIDDLETON Date 08/08/2019
 Officer with delegated authority under Section 20 of the Environmental Protection Act 1986

Information derived from this map should be confirmed with the data custodian acknowledged by the agency acronym in the legend.



MA Crown Copyright 2002

PLAN 7009/2M

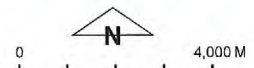


LEGEND

Clearing Instruments

□ Areas Approved to Clear

Orthophotography sourced from Landgate



Scale 1:150,000
(Approximate when reproduced at A4)

Geocentric Datum Australia 1994

Note: the data in this map have not been projected. This may result in geometric distortion or measurement inaccuracies.

Middleton

JACQUI MIDDLETON Date 08/08/2019
Officer with delegated authority under Section 20 of
the Environmental Protection Act 1986

Information derived from this map should be confirmed with the data custodian acknowledged by the agency acronym in the legend.



WA Crown Copyright 2002

PLAN 7009/2N



LEGEND

Clearing Instruments

■ Areas Approved to Clear

Orthophotography sourced from Landgate



Scale 1:150,000
(Approximate when reproduced at A4)

Geocentric Datum Australia 1994

Note: the data in this map have not been projected. This may result in geometric distortion or measurement inaccuracies.

JACQUI MIDDLETON Date 08/08/2019
Officer with delegated authority under Section 20 of
the Environmental Protection Act 1985

Information derived from this map should be
confirmed with the data custodian acknowledged
by the agency acronym in the legend.



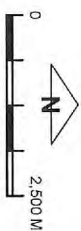
WA Crown Copyright 2002

PLAN 7009/20



LEGEND

- Clearing Instruments
- Areas Approved to Clear
- Orthophotography sourced from Landgate



Scale 1:100,000

(Approximate when reproduced at A4)

Geocentric Datum Australia 1994

Note: the data in this map have not been projected. This may result in geometric distortion or measurement inaccuracies.

J Middleton

JACQUI MIDDLETON Date 09/08/2019
 Officer with delegated authority under Section 20 of
 the Environmental Protection Act 1986
 Information derived from this map should be
 confirmed with the data custodian acknowledged
 by the agency acronym in the legend.



WA Crown Copyright 2002