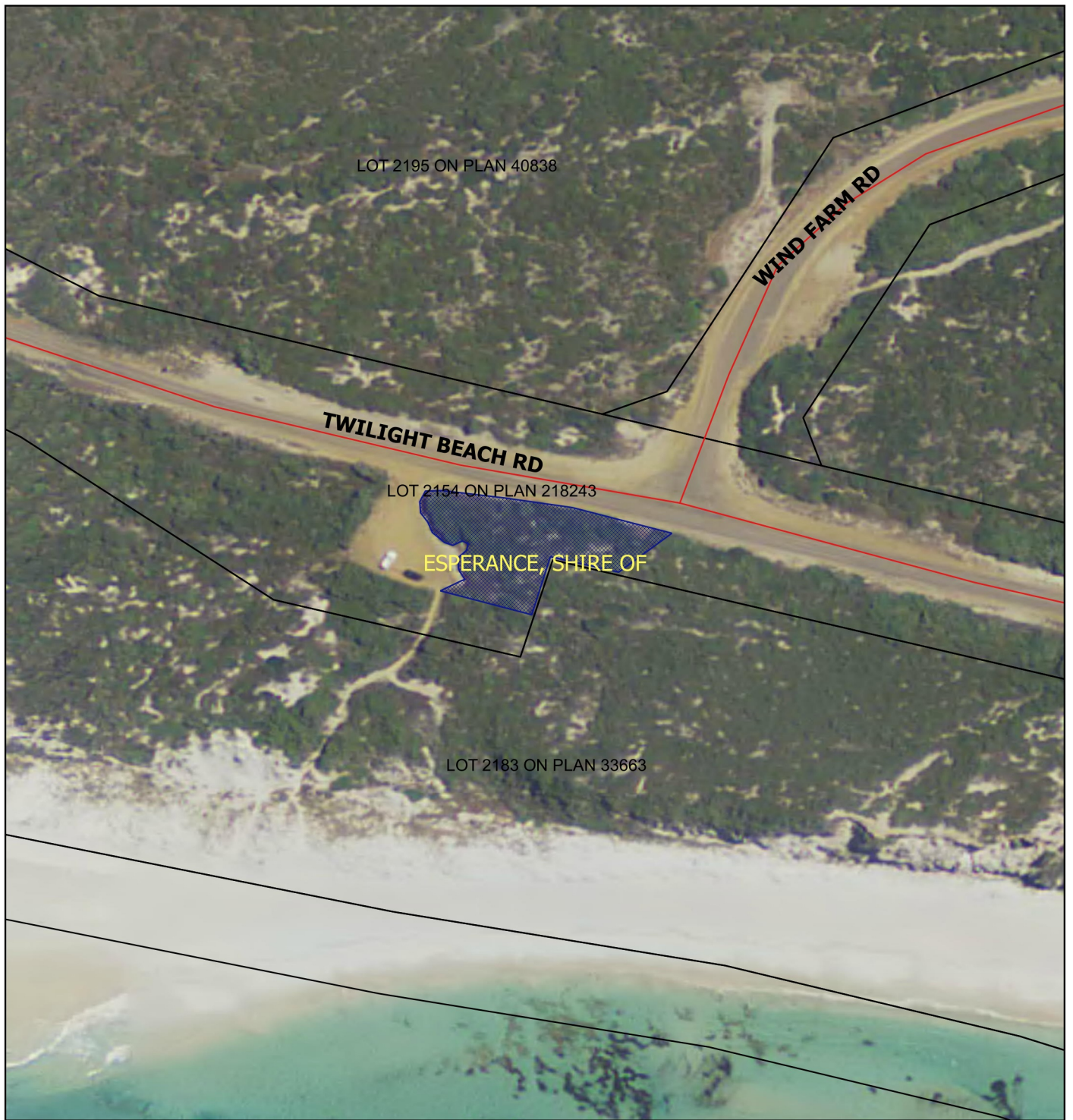


# CPS 7035/1 - Map



### Legend

- Roads
- Cadastre
- Virtual Mosaic (LGATE-V001)
- Clearing Instruments Proposal
- LGA



1:959

MGA 94  
Geocentric Datum of Australia 1994

.....Date.....

Officer with delegated authority under Section 20  
of the Environmental Protection Act 1986



GOVERNMENT OF  
WESTERN AUSTRALIA