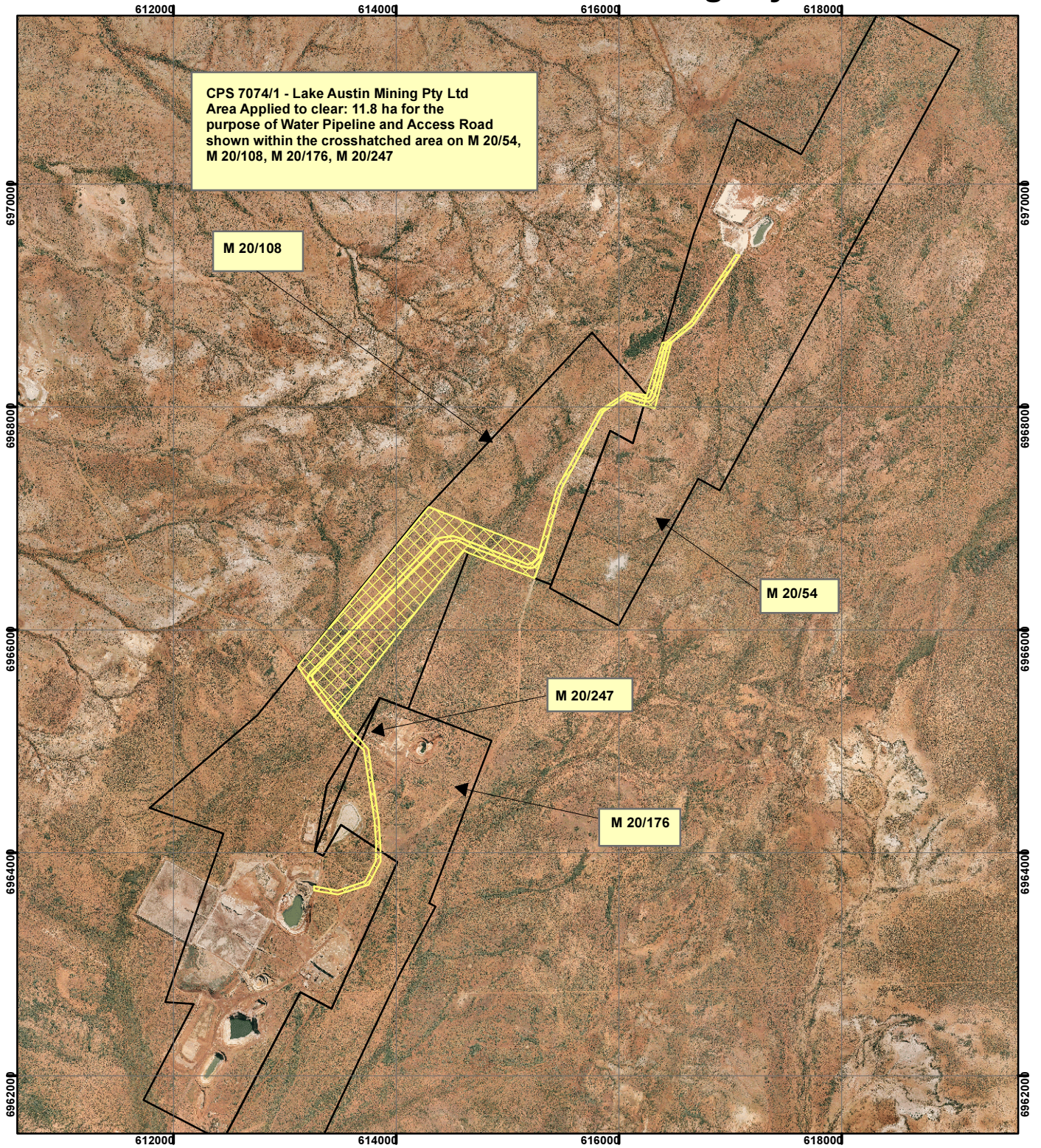


CPS 7074/1 - Lake Austin Mining Pty Ltd



CPS 7074/1 - Lake Austin Mining Pty Ltd
 Area Applied to clear: 11.8 ha for the
 purpose of Water Pipeline and Access Road
 shown within the crosshatched area on M 20/54,
 M 20/108, M 20/176, M 20/247


M 20/108

M 20/54

M 20/247

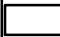

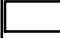

M 20/176

Legend

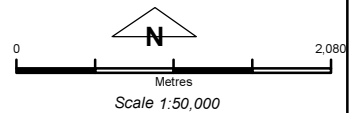
 Clearing Instruments

Mining Tenements

FMT_TENID

-  M 20/108
-  M 20/176
-  M 20/247
-  M 20/54

Reedy Aerial Mosaic January 2005



Geocentric Datum Australia 1994
 Note: the data in this map have not been
 projected. This may result in geometric
 distortion or measurement inaccuracies.

..... Date

Officer with delegated authority under Section 20 of
 the Environmental Protection Act 1986

Information derived from this map should be
 confirmed with the data custodian acknowledged
 by the agency acronym in the legend.

