

CPS 7103/1 - Map

116.205°E

116.210°E

33.860°S

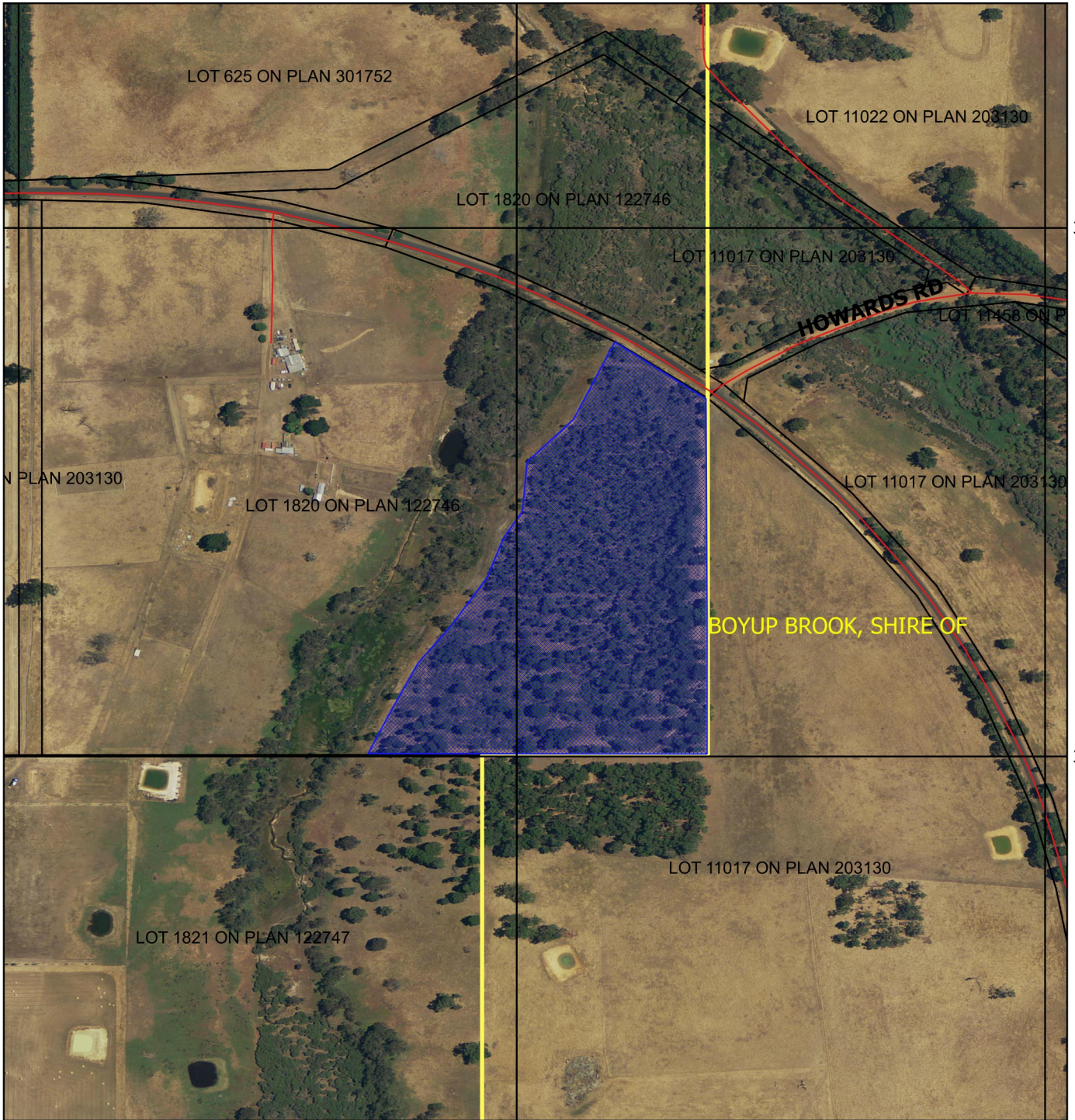
33.860°S

33.865°S


33.865°S

116.205°E

116.210°E



Legend

 Areas applied to clear
Virtual Mosaic (LGATE-V001)

 Cadastre

 LGA



1:3,846

MGA 94

Geocentric Datum of Australia 1994

.....Date.....

Officer with delegated authority under Section 20
of the Environmental Protection Act 1986



GOVERNMENT OF
WESTERN AUSTRALIA