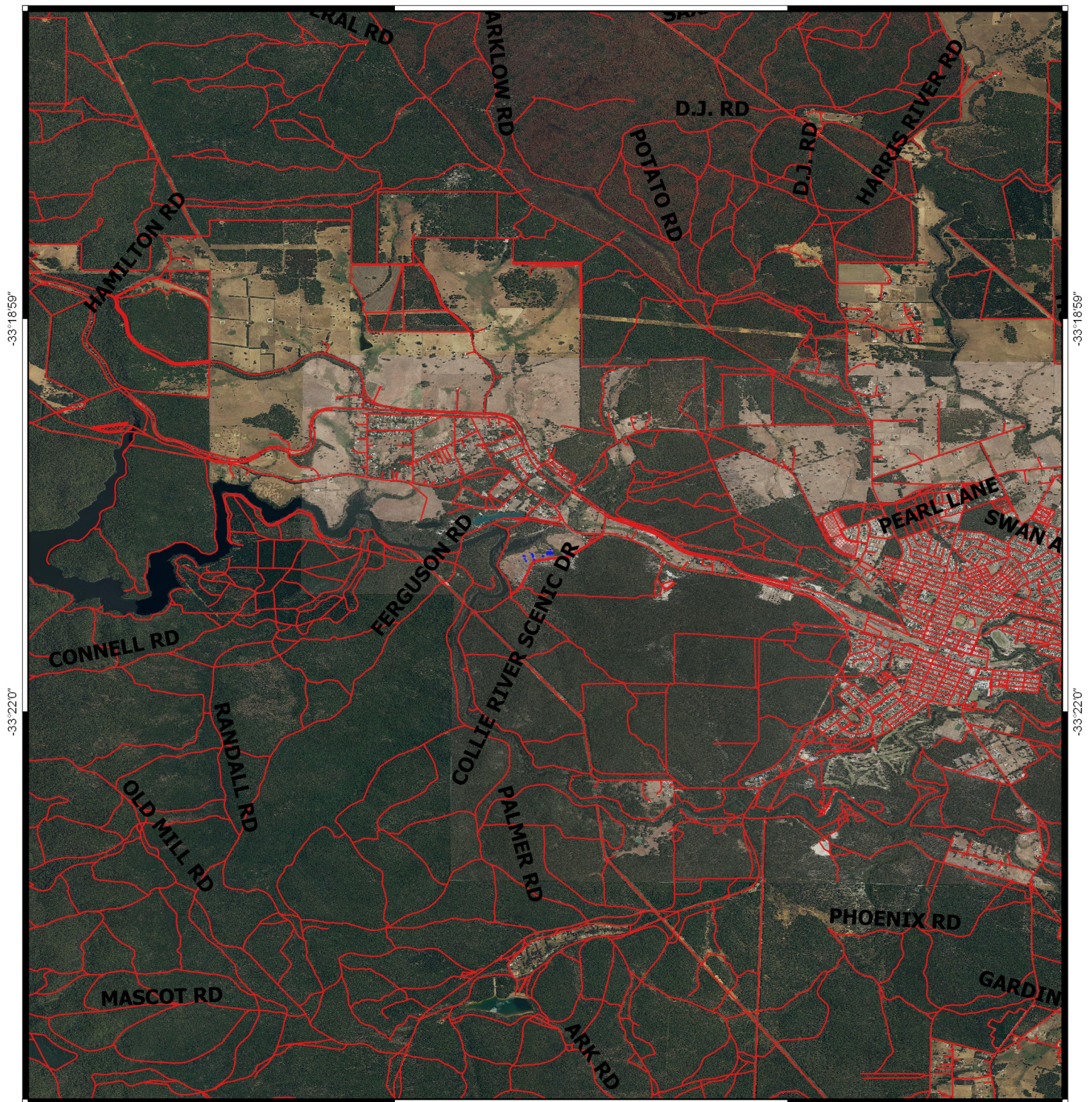


CPS 7118/1 - Map

116°4'54"

116°7'54"



116°4'54"

116°7'54"

Legend

 Areas applied to clear

 Roads

 Cadastre

Virtual Mosaic (LGATE-V001)



1:50,000

MGA 94

Geocentric Datum of Australia 1994

.....Date.....

Officer with delegated authority under Section 20
of the Environmental Protection Act 1986



GOVERNMENT OF
WESTERN AUSTRALIA