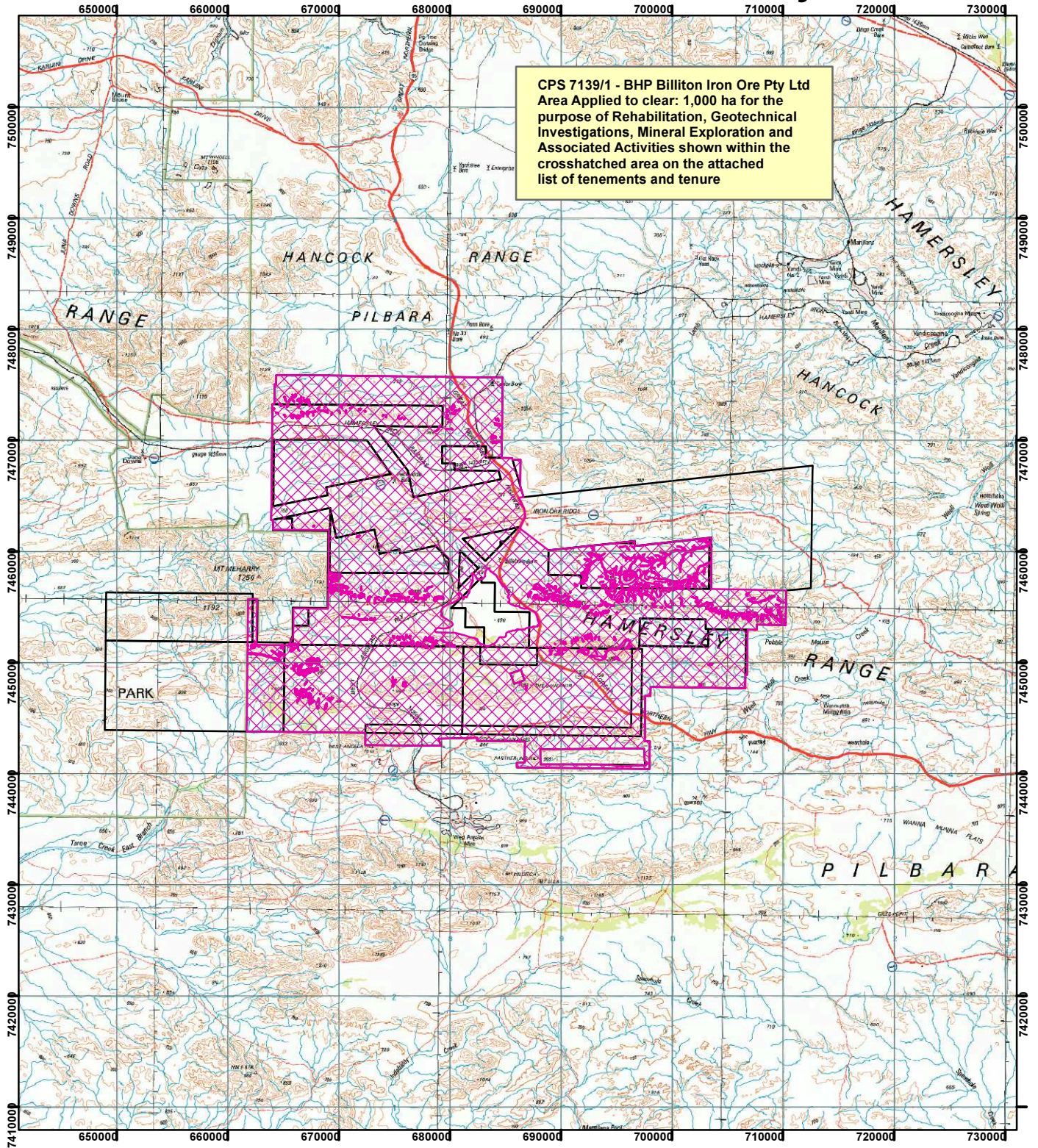


CPS 7139/1 - BHP Billiton Iron Ore Pty Ltd

CPS 7139/1 - BHP Billiton Iron Ore Pty Ltd
Area Applied to clear: 1,000 ha for the
purpose of Rehabilitation, Geotechnical
Investigations, Mineral Exploration and
Associated Activities shown within the
crosshatched area on the attached
list of tenements and tenure



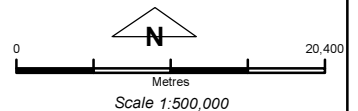
Legend

Clearing Instruments

Mining Tenements

FMT_TENID

- E 47/13-I
- E 47/14-I
- E 47/1429-I
- E 47/1431-I
- E 47/1432-I
- E 47/15-I
- E 47/1540-I
- E 47/17-I
- E 47/1767-I
- E 47/1870-I
- E 47/1871-I
- E 47/1872-I
- E 47/1873-I
- E 47/1874-I
- E 47/1875-I
- E 47/2500-I
- ML 281SA
- P 47/1421-I
- P 47/1611-I



Geocentric Datum Australia 1994

Note: the data in this map have not been projected. This may result in geometric distortion or measurement inaccuracies.

..... Date

Officer with delegated authority under Section 20 of
the Environmental Protection Act 1986

Information derived from this map should be
confirmed with the data custodian acknowledged
by the agency acronym in the legend.

