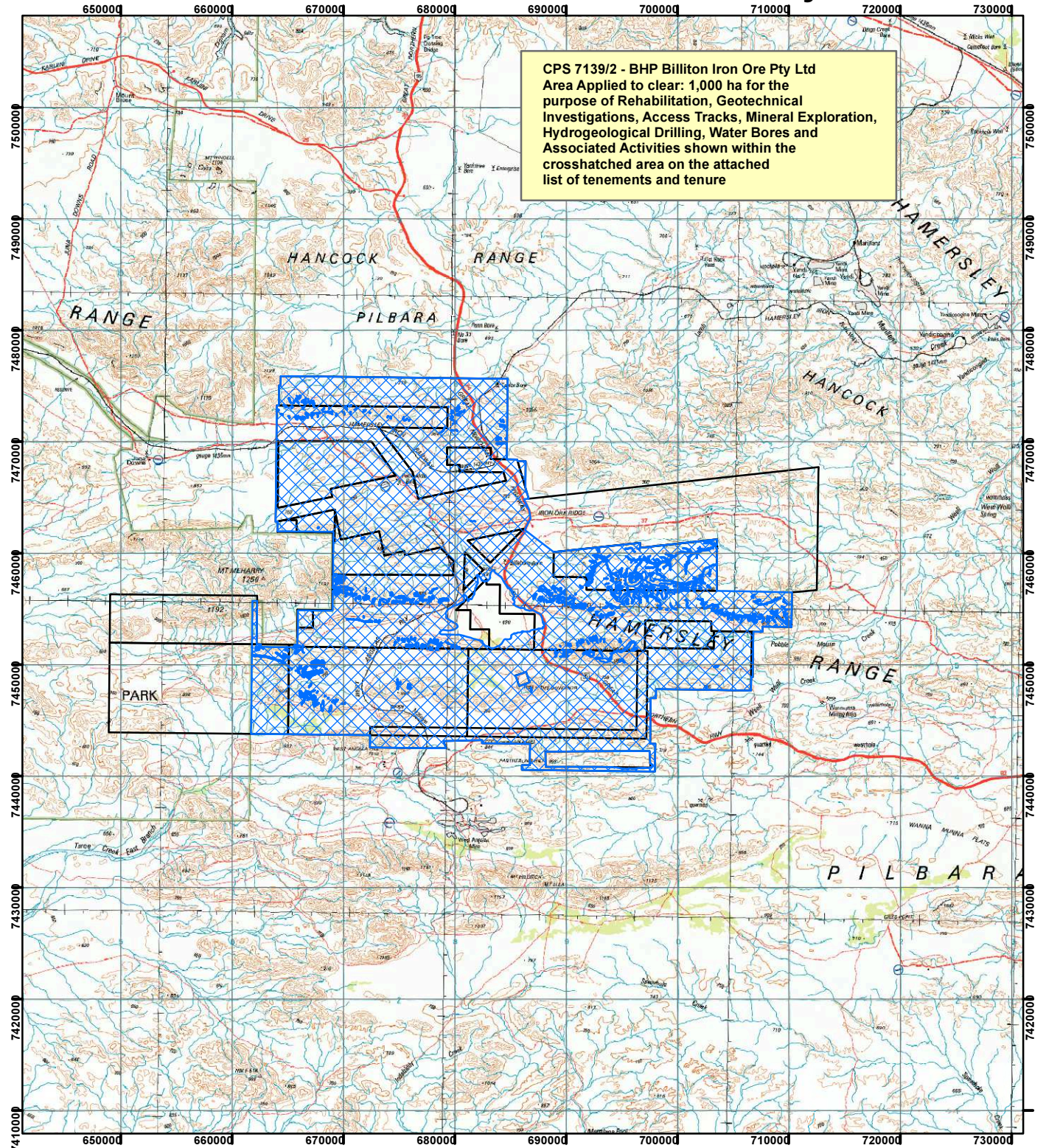


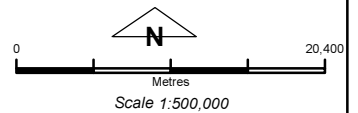
# CPS 7139/2 - BHP Billiton Iron Ore Pty Ltd

CPS 7139/2 - BHP Billiton Iron Ore Pty Ltd  
Area Applied to clear: 1,000 ha for the  
purpose of Rehabilitation, Geotechnical  
Investigations, Access Tracks, Mineral Exploration,  
Hydrogeological Drilling, Water Bores and  
Associated Activities shown within the  
crosshatched area on the attached  
list of tenements and tenure



Legend

- Clearing Instruments
- Mining Tenements**
- FMT\_TENID**
- E 47/134
- E 47/144
- E 47/1429-I
- E 47/154
- E 47/1540-I
- E 47/174
- E 47/1870-I
- ML 249SA
- ML 281SA
- P 47/1421-I
- P 47/1611-I



Geocentric Datum Australia 1994

Note: the data in this map have not been projected. This may result in geometric distortion or measurement inaccuracies.

..... Date .....

Officer with delegated authority under Section 20 of  
the Environmental Protection Act 1986

Information derived from this map should be  
confirmed with the data custodian acknowledged  
by the agency acronym in the legend.

