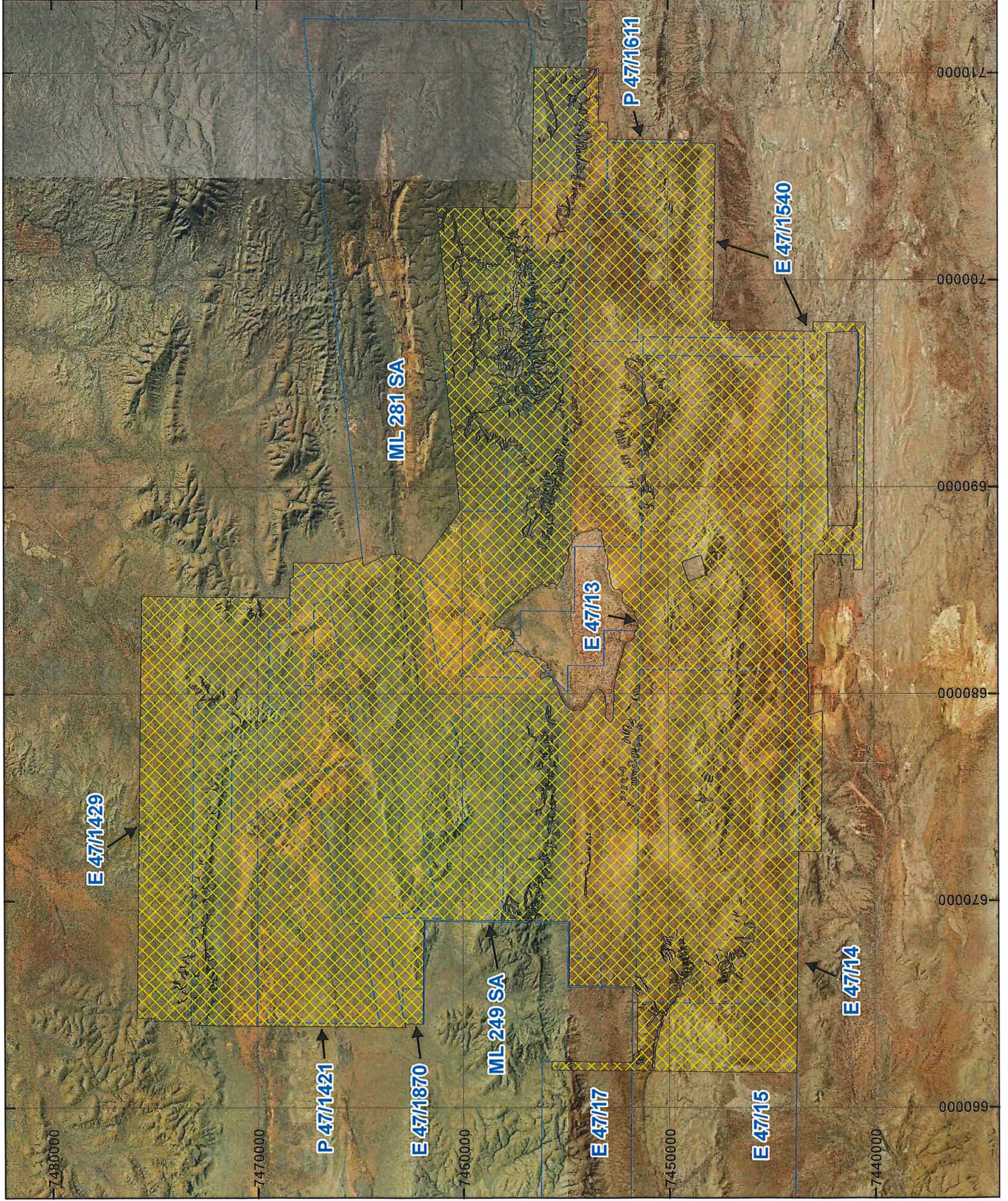


PLAN 7139/2A



LEGEND

Mining Tenements

Clearing Instruments

Areas Approved to Clear

Areas Subject to Conditions

Orthophotography sourced from Landgate



Note: the data in this map have not been projected. This may result in geometric distortion or measurement inaccuracies.

Dan Machin

DAN MACHIN Date: 03/08/2017
 Officer with delegated authority under Section 20 of the Environmental Protection Act 1986

Information derived from this map should be confirmed with the data custodian acknowledged by the agency acronym in the legend.



WA Crown Copyright 2002

PLAN 7139/2B

LEGEND

□ Mining Tenements

Clearing Instruments

■ Areas Approved to Clear

■ Areas Subject to Conditions

Orthophotography sourced from Landgate



0 800 M

Scale 1:20 000

(Approximate when reproduced at A4)

Geocentric Datum Australia 1994

Note: the data in this map have not been projected. This may result in geometric distortion or measurement inaccuracies.

Dan Machin

DAN MACHIN Date: 03/08/2017

Officer with delegated authority under Section 20 of the Environmental Protection Act 1986

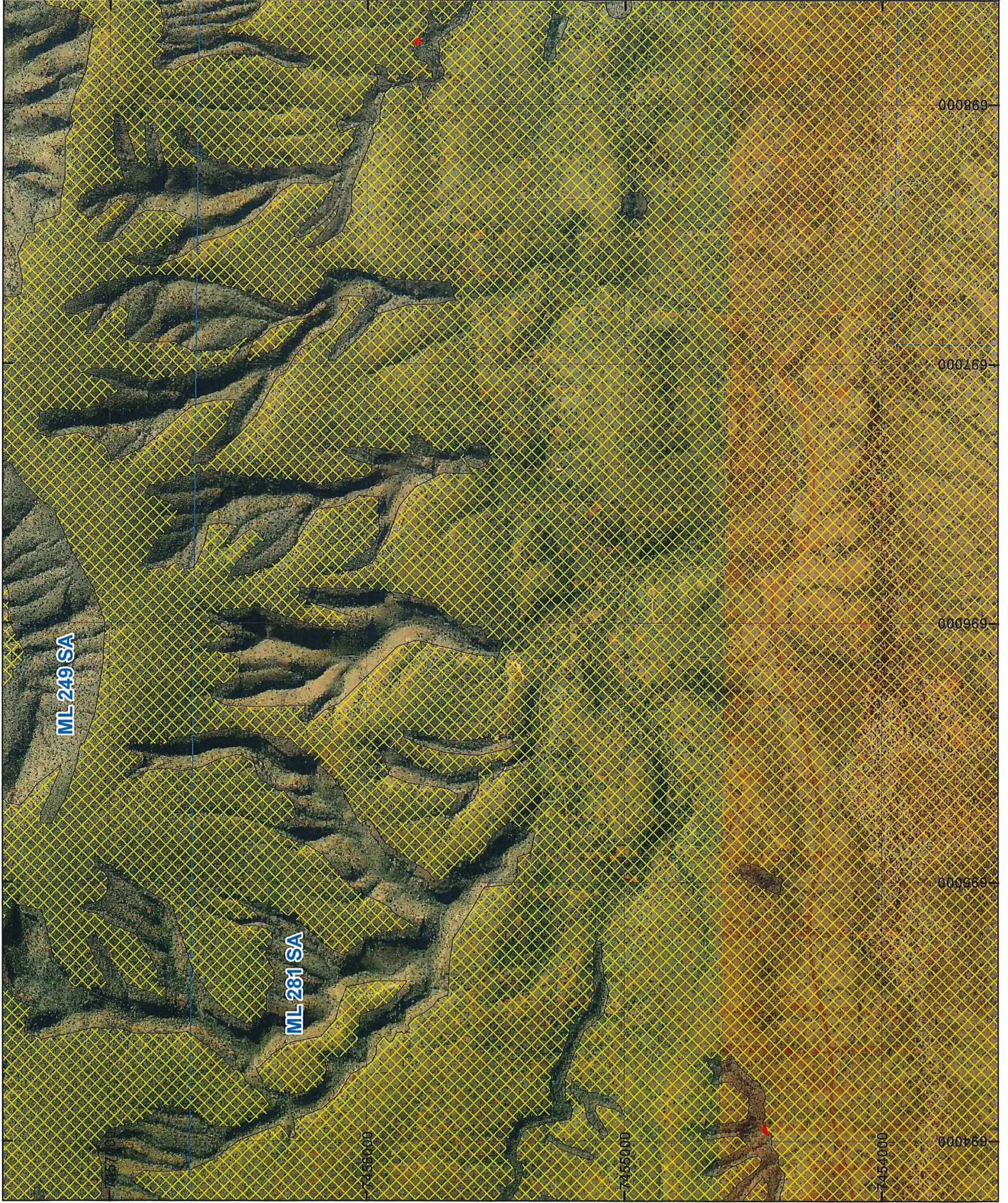
Information derived from this map should be confirmed with the data custodian acknowledged by the agency acronym in the legend.




WA Crown Copyright, 2002



PLAN 7139/2C



LEGEND

 Mining Tenements

Clearing Instruments

 Areas Approved to Clear

 Areas Subject to Conditions

Orthophotography sourced from Landgate



0 800 M

Scale 1:20,000

(Approximate when reproduced at A4)

Geocentric Datum Australia 1994

Note: the data in this map have not been projected. This may result in geometric distortion or measurement inaccuracies.

Dan Machin

DAN MACHIN Date: 03/08/2017

Officer with delegated authority under Section 20 of the Environmental Protection Act 1986

Information derived from this map should be confirmed with the data custodian acknowledged by the agency acronym in the legend.



WA Crown Copyright, 2002.