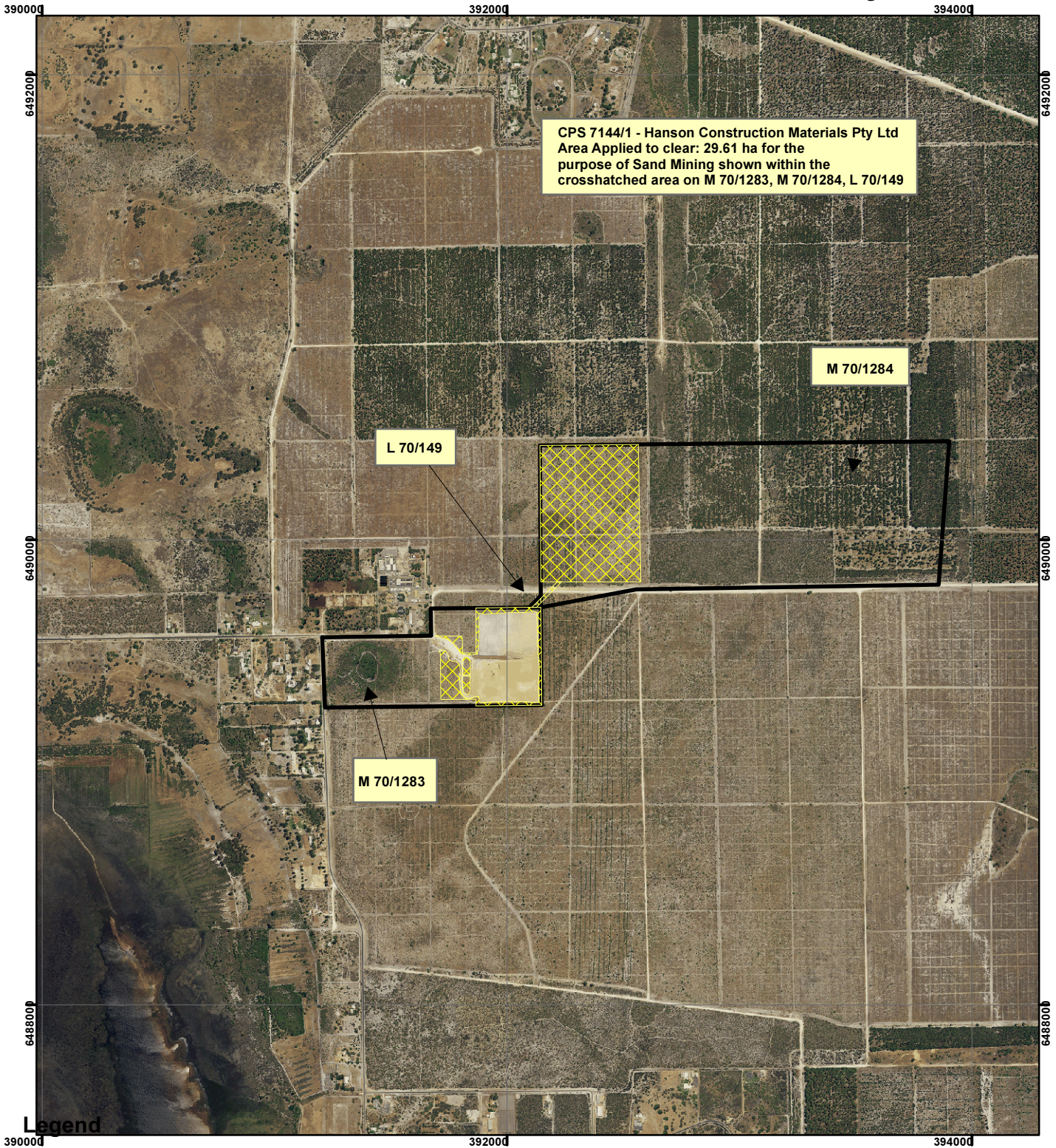


CPS 7144/1 - Hanson Construction Materials Pty Ltd



CPS 7144/1 - Hanson Construction Materials Pty Ltd
 Area Applied to clear: 29.61 ha for the
 purpose of Sand Mining shown within the
 crosshatched area on M 70/1283, M 70/1284, L 70/149

L 70/149

M 70/1284

M 70/1283

Legend

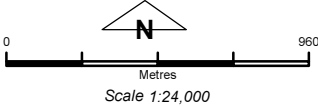
Clearing Instruments

Mining Tenements

FMT_TENID

- L 70/149
- M 70/1283
- M 70/1284

Metro Central Aerial Mosaic February 2015



Geocentric Datum Australia 1994
 Note: the data in this map have not been
 projected. This may result in geometric
 distortion or measurement inaccuracies.

Date

Officer with delegated authority under Section 20 of
 the Environmental Protection Act 1986

Information derived from this map should be
 confirmed with the data custodian acknowledged
 by the agency acronym in the legend.

